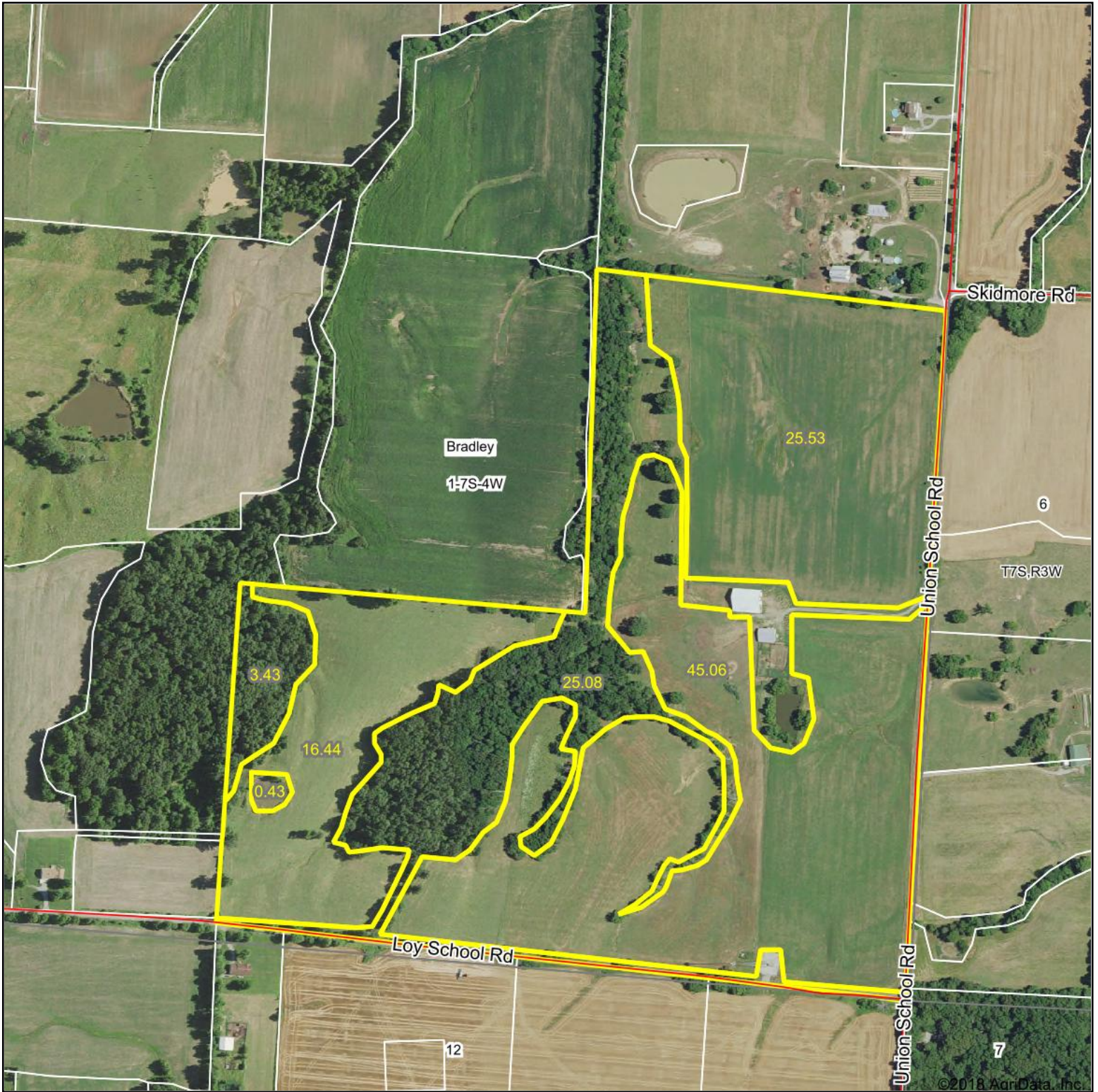


# Aerial Map



map center: 37° 56' 37.58, -89° 29' 23.88

0ft 587ft 1175ft



Maps Provided By:



© AgriData, Inc. 2018

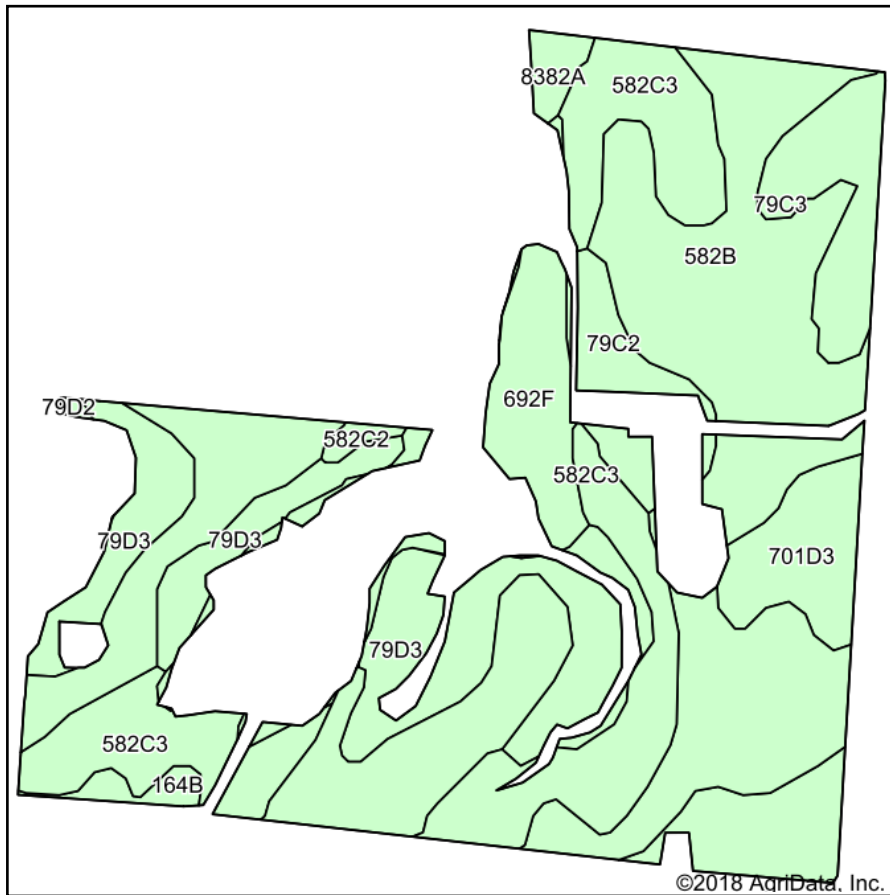
www.AgriDataInc.com

**1-7S-4W**  
**Jackson County**  
**Illinois**

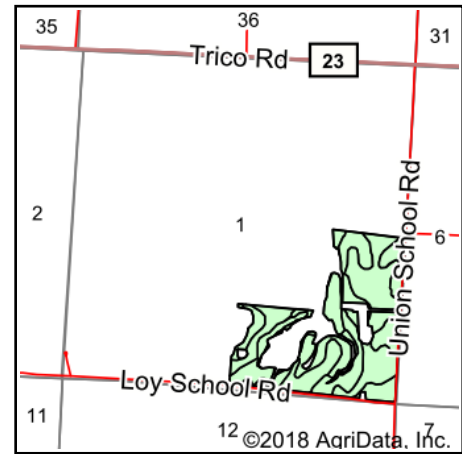


9/15/2018

# Soils Map



Soils data provided by USDA and NRCS.



State: **Illinois**  
 County: **Jackson**  
 Location: **1-7S-4W**  
 Township: **Bradley**  
 Acres: **87.03**  
 Date: **9/15/2018**



Maps Provided By:  
  
 CUSTOMIZED ONLINE MAPPING  
 © AgriData, Inc. 2018 www.AgriDataInc.com



## Area Symbol: IL077, Soil Area Version: 17

Code	Soil Description	Acres	Percent of field	Il. State Productivity Index Legend	Corn Bu/A	Soybeans Bu/A	Wheat Bu/A	Crop productivity index for optimum management
**582B	Homen silt loam, 2 to 5 percent slopes	36.05	41.4%		**149	**47	**55	**108
**582C3	Homen silty clay loam, 5 to 10 percent slopes, severely eroded	16.04	18.4%		**129	**40	**48	**94
**79D3	Menfro silt loam, 10 to 18 percent slopes, severely eroded	12.82	14.7%		**134	**41	**51	**97
**701D3	Menfro-Hickory complex, 10 to 18 percent slopes, severely eroded	7.48	8.6%		**120	**39	**47	**89
**692F	Menfro-Wellston silt loams, 18 to 35 percent slopes	5.37	6.2%		**104	**33	**40	**76
**79C3	Menfro silt loam, 5 to 10 percent slopes, severely eroded	4.36	5.0%		**142	**44	**54	**103
**79C2	Menfro silt loam, 5 to 10 percent slopes, eroded	2.76	3.2%		**153	**47	**59	**112
8382A	Belknap silt loam, 0 to 2 percent slopes, occasionally flooded	0.90	1.0%		156	52	63	117
**164B	Stoy silt loam, 2 to 5 percent slopes	0.77	0.9%		**144	**47	**57	**108
**582C2	Homen silt loam, 5 to 10 percent slopes, eroded	0.37	0.4%		**140	**44	**52	**101
**79D2	Menfro silt loam, 10 to 18 percent slopes, eroded	0.11	0.1%		**147	**45	**56	**107
Weighted Average					137.6	43.2	51.7	100.1

**Table: Optimum Crop Productivity Ratings for Illinois Soil by K.R. Olson and J.M. Lang, Office of Research, ACES, University of Illinois at Champaign-Urbana.** Version: 1/2/2012 Amended Table S2 B811

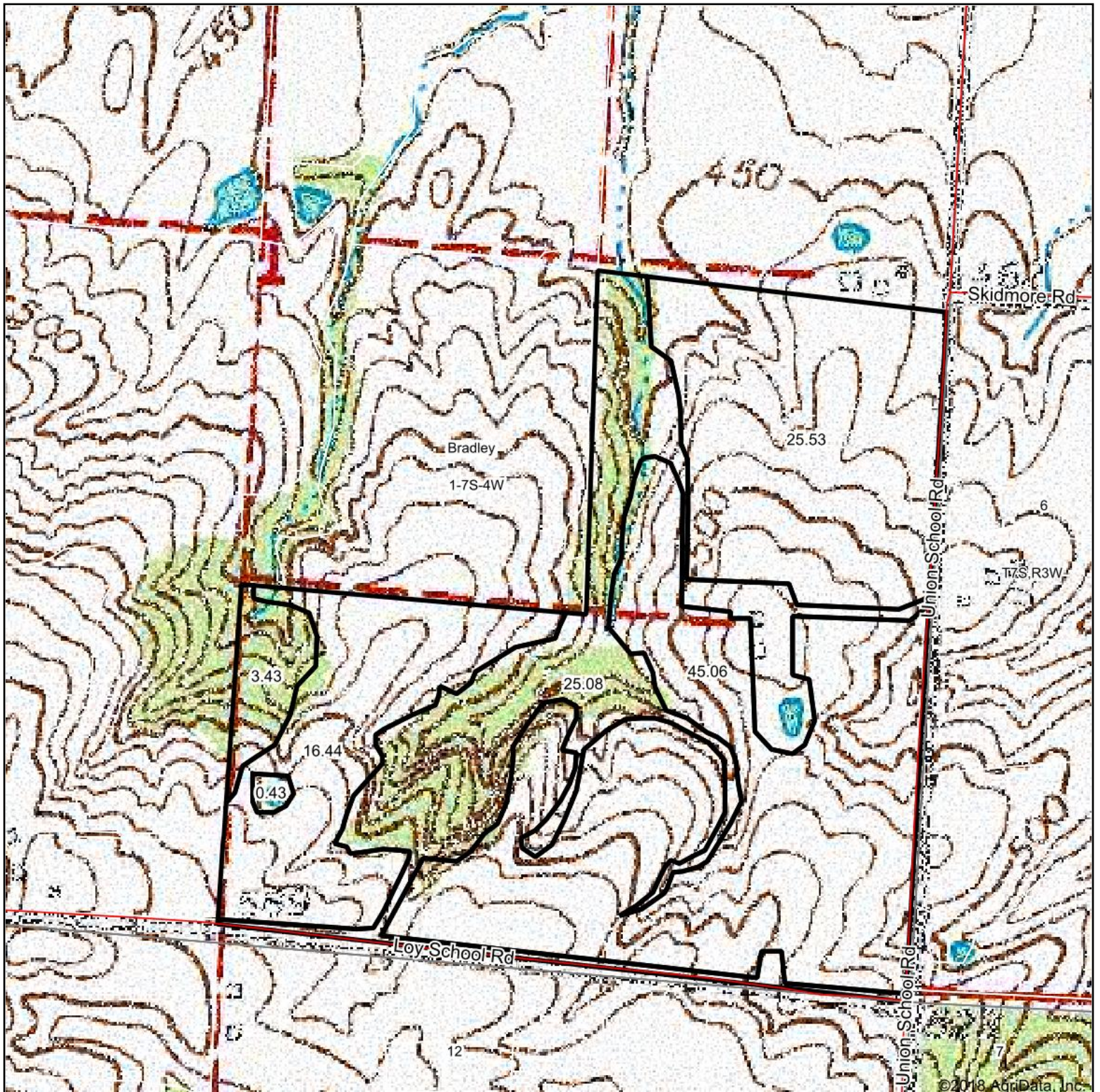
Crop yields and productivity indices for optimum management (B811) are maintained at the following NRES web site: <http://soilproductivity.nres.illinois.edu/>

\*\* Indexes adjusted for slope and erosion according to Bulletin 811 Table S3

Soils data provided by USDA and NRCS. Soils data provided by University of Illinois at Champaign-Urbana.



# Topography Map



map center: 37° 56' 37.58, -89° 29' 23.88

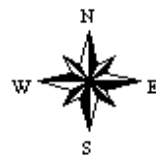
0ft 587ft 1175ft



Maps Provided By:



**1-7S-4W**  
**Jackson County**  
**Illinois**



9/15/2018