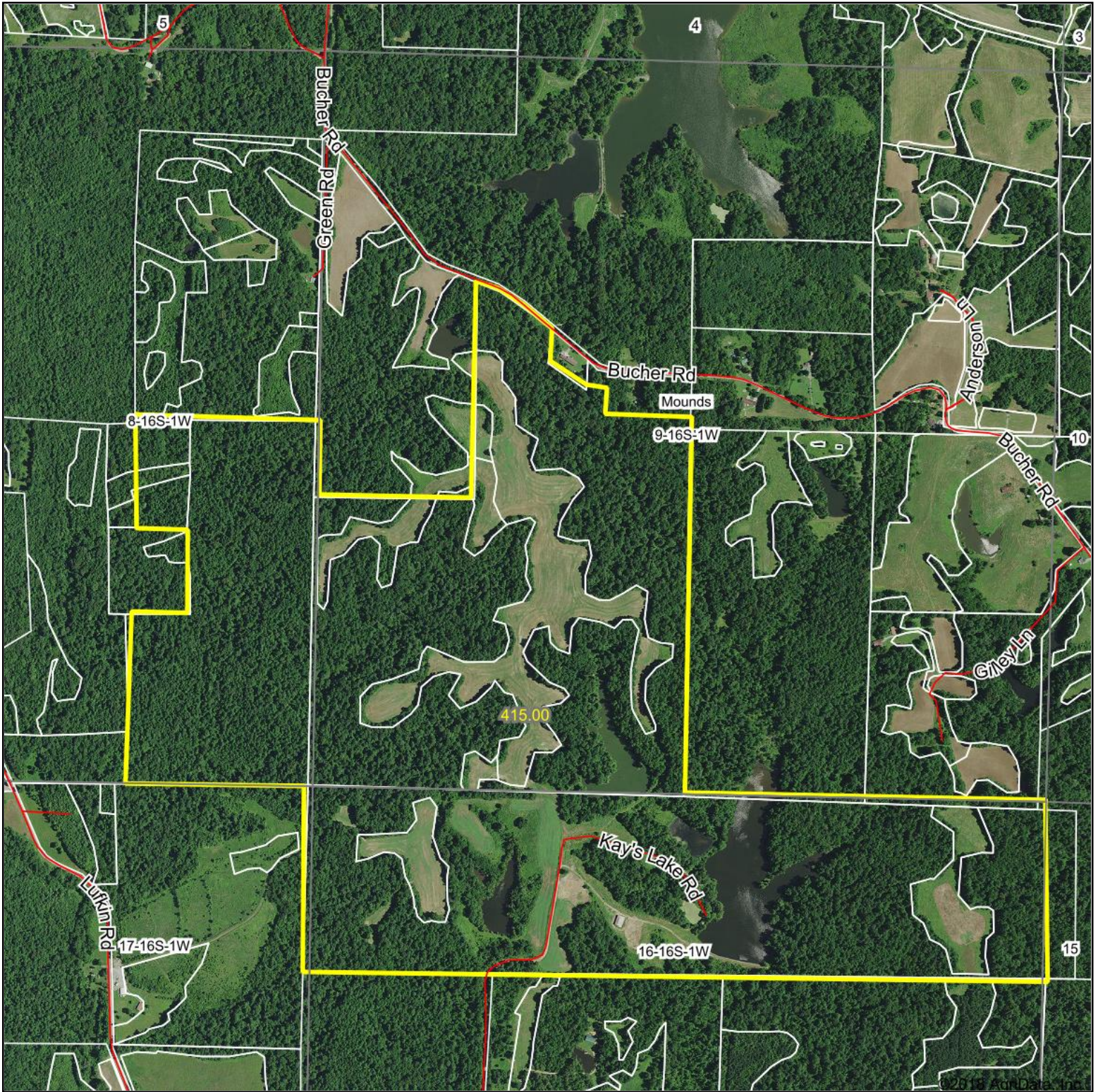


Aerial Map



map center: 37° 8' 3.36, -89° 13' 31.22

0ft 1138ft 2277ft



Maps Provided By:



© Agridata, Inc. 2018

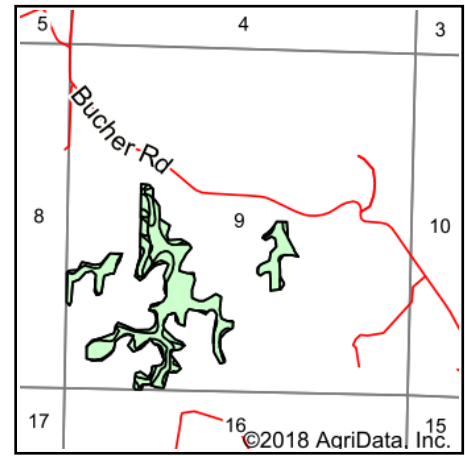
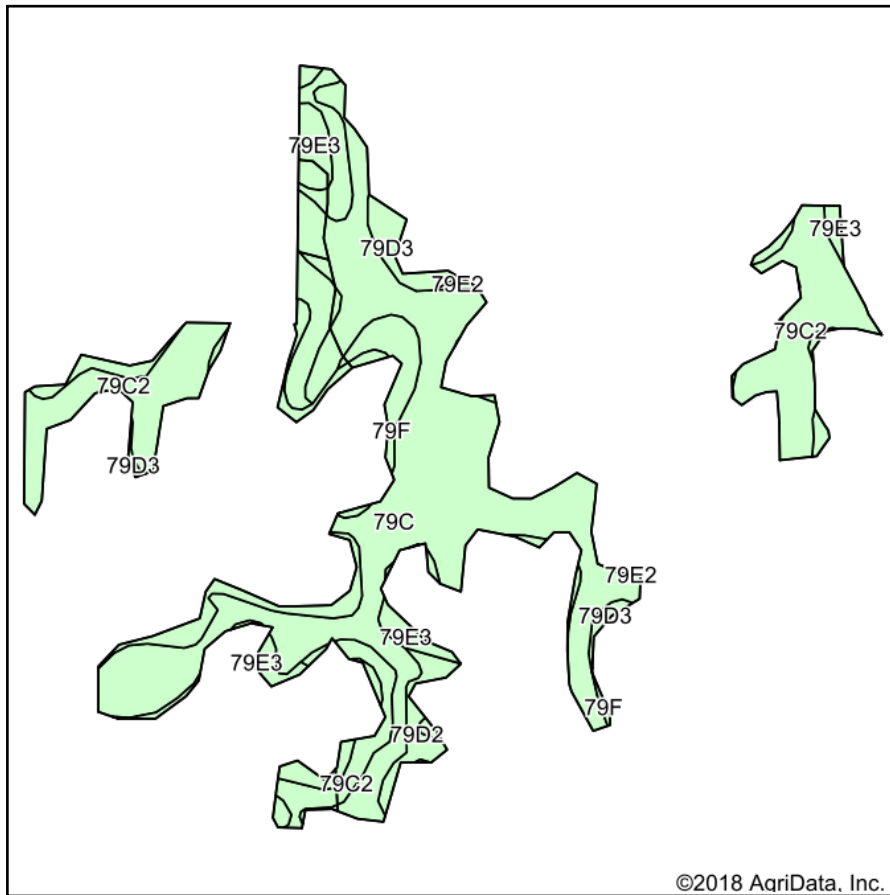
www.AgridataInc.com

9-16S-1W
Pulaski County
Illinois



7/10/2018

Soils Map



State: **Illinois**
 County: **Pulaski**
 Location: **9-16S-1W**
 Township: **Mounds**
 Acres: **52.01**
 Date: **7/7/2018**



Maps Provided By:

 © AgriData, Inc. 2018 www.AgriDataInc.com



Area Symbol: IL153, Soil Area Version: 11

Code	Soil Description	Acres	Percent of field	Il. State Productivity Index Legend	Corn Bu/A	Soybeans Bu/A	Wheat Bu/A	Crop productivity index for optimum management
**79C	Menfro silt loam, 5 to 10 percent slopes	25.57	49.2%		**160	**49	**61	**116
**79C2	Menfro silt loam, 5 to 10 percent slopes, eroded	14.69	28.2%		**153	**47	**59	**112
**79E3	Menfro silt loam, 18 to 25 percent slopes, severely eroded	6.78	13.0%		**112	**35	**43	**82
**79D3	Menfro silt loam, 10 to 18 percent slopes, severely eroded	1.83	3.5%		**134	**41	**51	**97
**79F	Menfro silt loam, 25 to 35 percent slopes	1.78	3.4%		**117	**36	**45	**85
**79D2	Menfro silt loam, 10 to 18 percent slopes, eroded	1.20	2.3%		**147	**45	**56	**107
**79E2	Menfro silt loam, 18 to 25 percent slopes, eroded	0.16	0.3%		**124	**38	**47	**90
Weighted Average					149	45.8	57	108.4

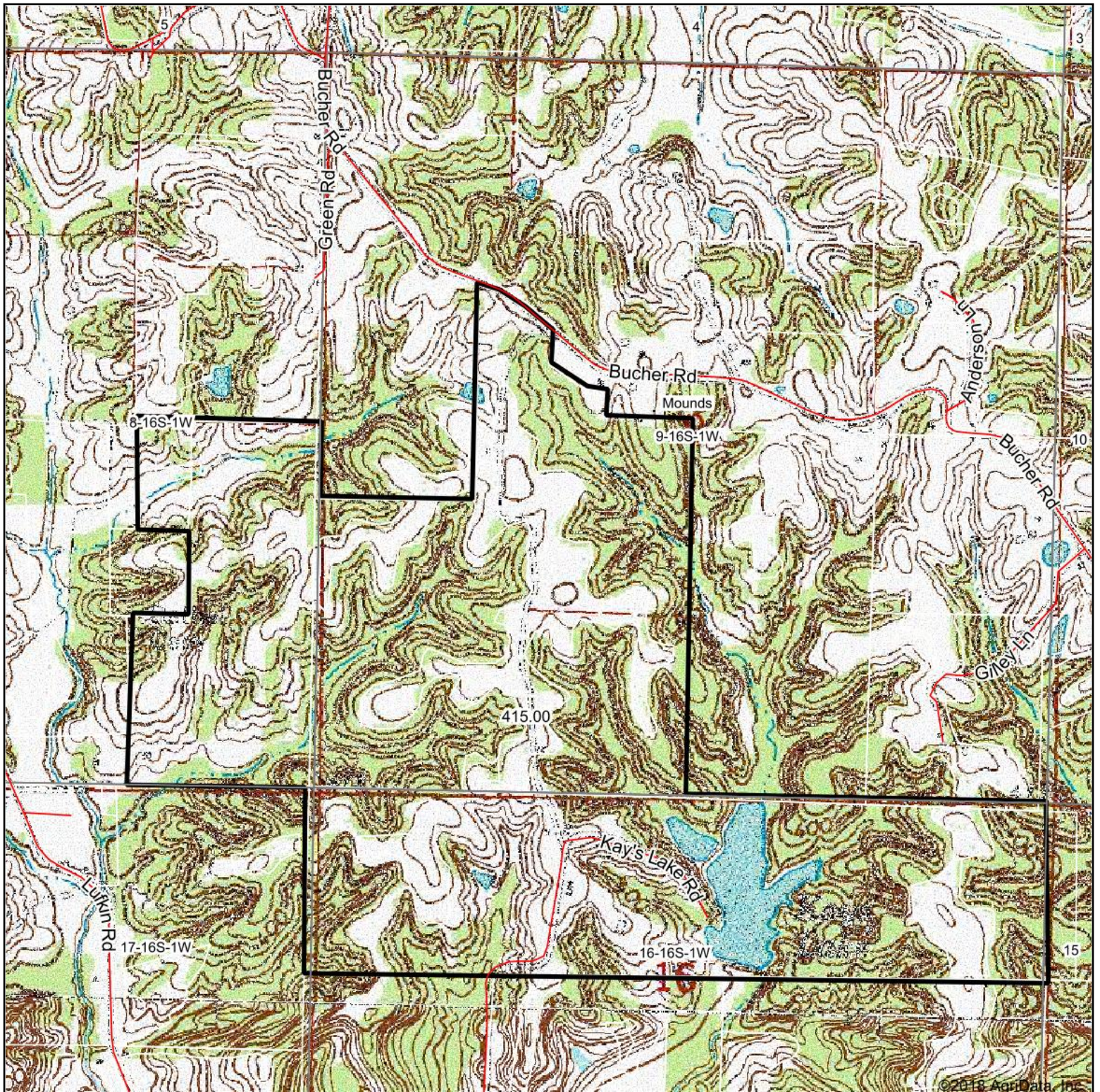
Table: Optimum Crop Productivity Ratings for Illinois Soil by K.R. Olson and J.M. Lang, Office of Research, ACES, University of Illinois at Champaign-Urbana. Version: 1/2/2012 Amended Table S2 B811

Crop yields and productivity indices for optimum management (B811) are maintained at the following NRES web site: <http://soilproductivity.nres.illinois.edu/>

** Indexes adjusted for slope and erosion according to Bulletin 811 Table S3

Soils data provided by USDA and NRCS. Soils data provided by University of Illinois at Champaign-Urbana.

Topography Map



map center: 37° 8' 3.36, -89° 13' 31.22

0ft 1138ft 2277ft

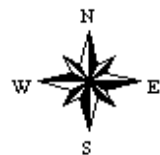


Maps Provided By:



© AgriData, Inc. 2018 www.AgrIDataInc.com

9-16S-1W
Pulaski County
Illinois



7/10/2018