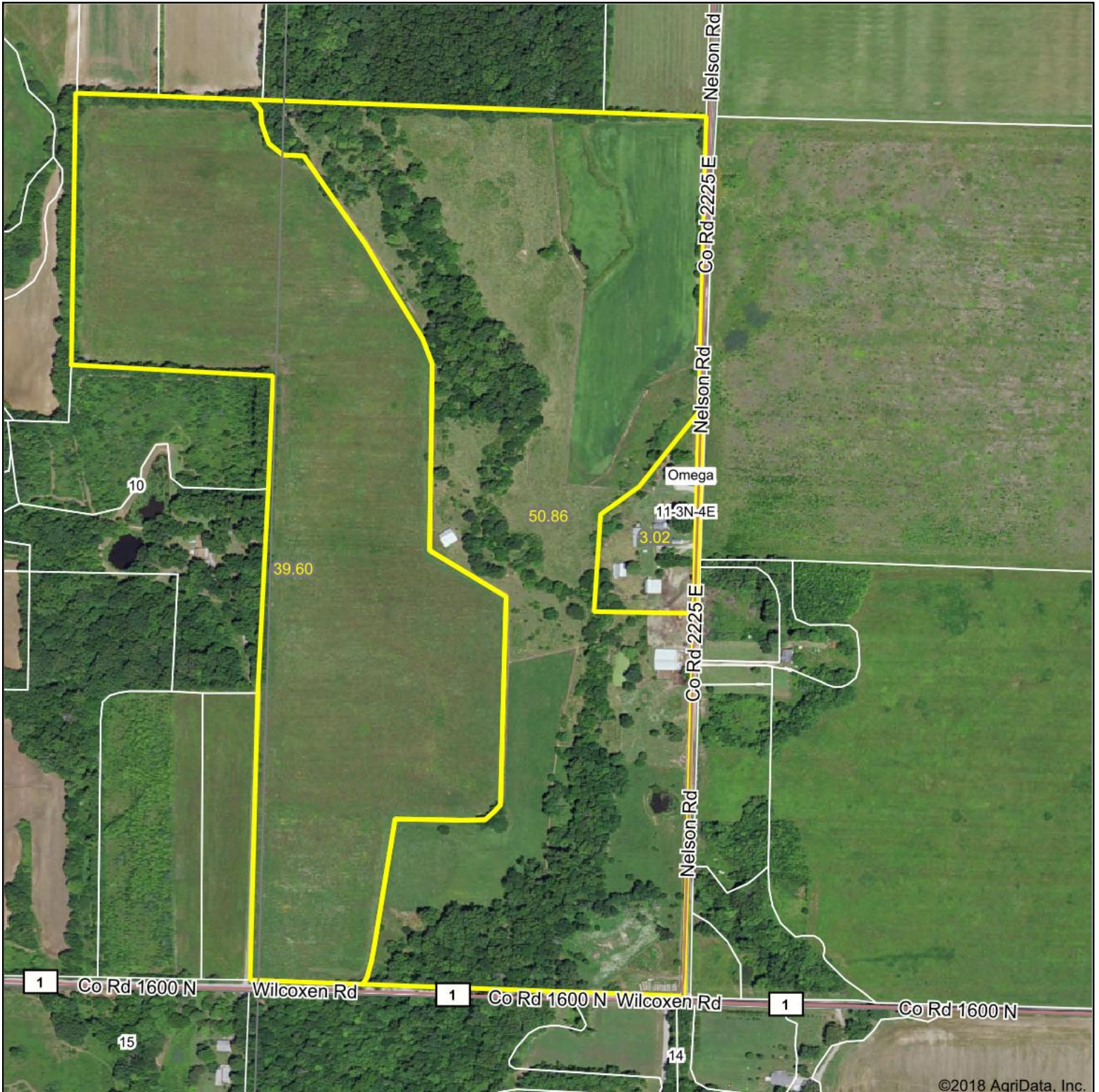


Aerial Map



map center: 38° 42' 42.38, -88° 43' 52.16

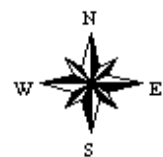
0ft 469ft 938ft



Maps Provided By:

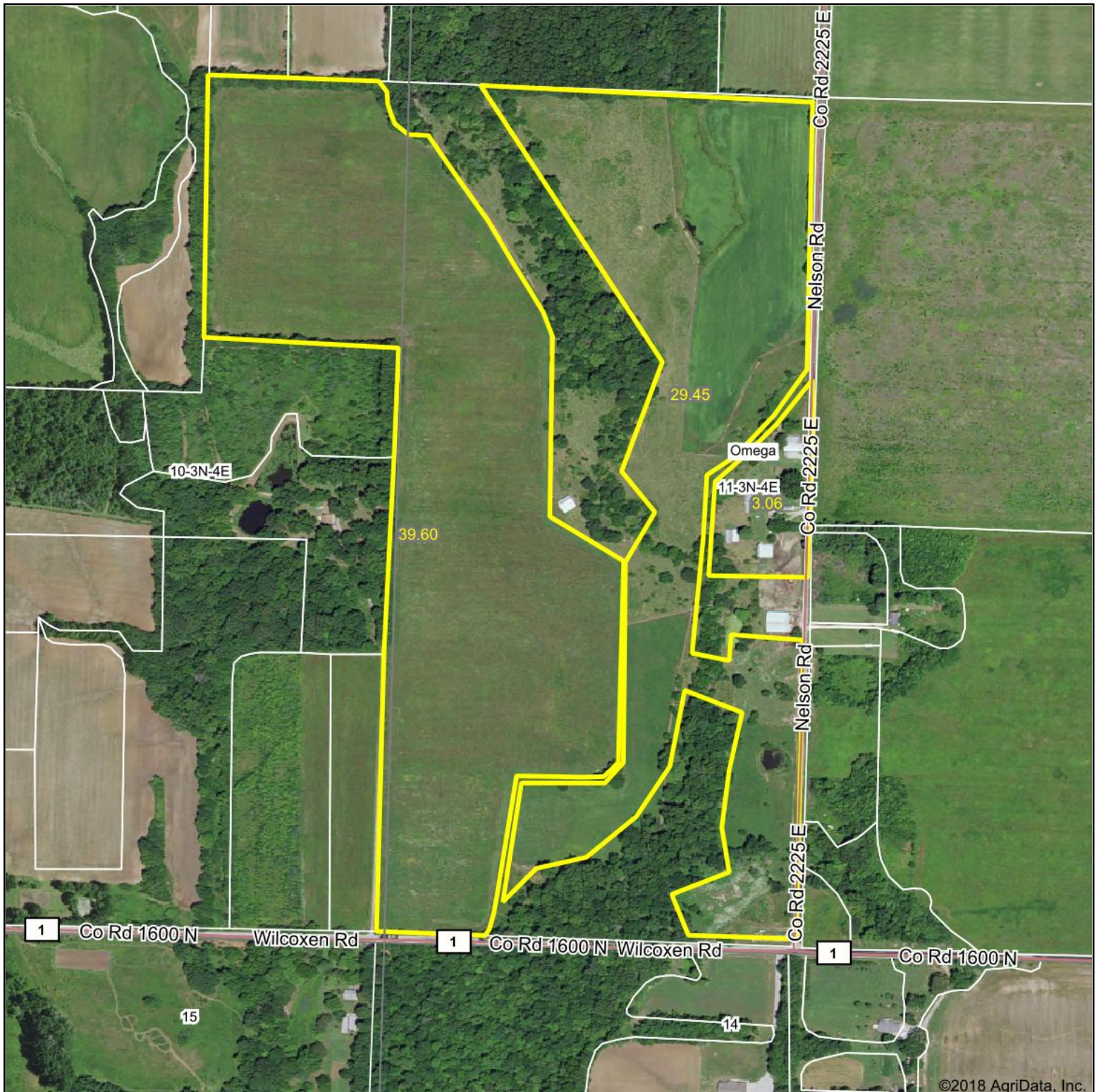


11-3N-4E
Marion County
Illinois



5/18/2018

Aerial Map



map center: 38° 42' 41.25, -88° 43' 56.68

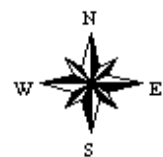
0ft 486ft 971ft



Maps Provided By:

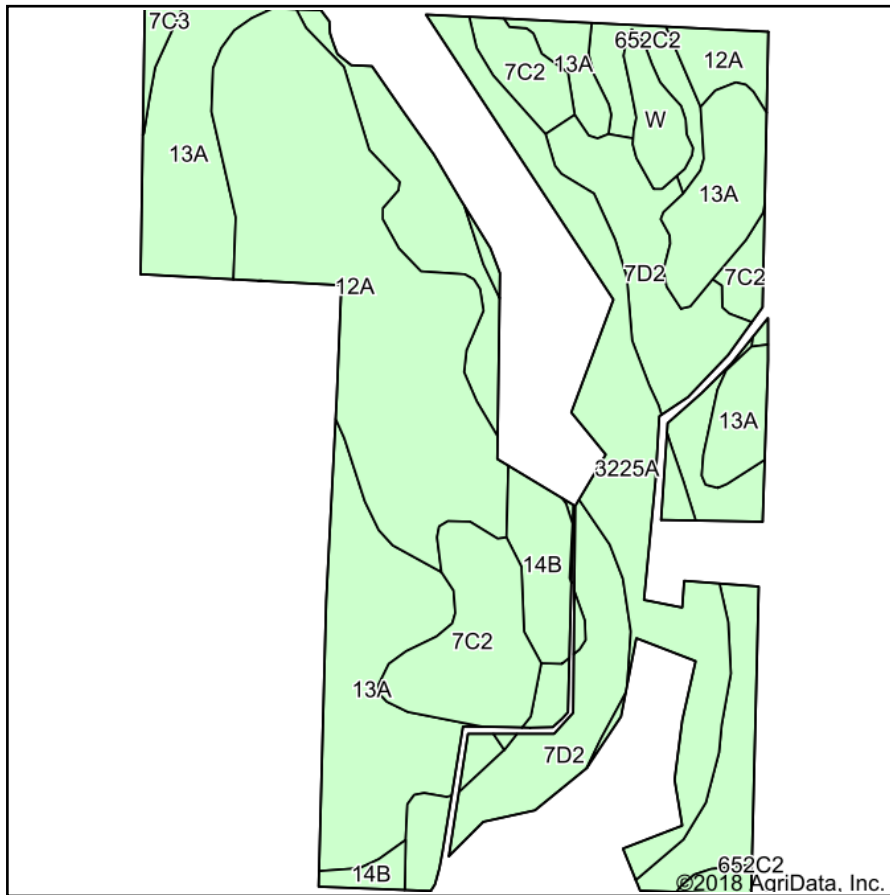


11-3N-4E
Marion County
Illinois

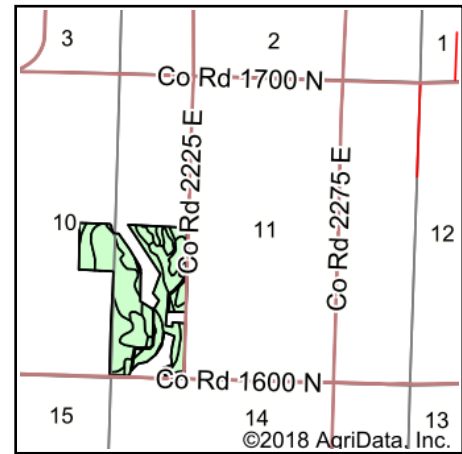


5/18/2018

Soils Map



Soils data provided by USDA and NRCS.



State: **Illinois**
 County: **Marion**
 Location: **11-3N-4E**
 Township: **Omega**
 Acres: **72.11**
 Date: **5/18/2018**



Maps Provided By:

 CUSTOMIZED ONLINE MAPPING
 © AgriData, Inc. 2018 www.AgriDataInc.com



Area Symbol: IL121, Soil Area Version: 14

Code	Soil Description	Acres	Percent of field	Il. State Productivity Index Legend	Corn Bu/A	Soybeans Bu/A	Wheat Bu/A	Grass-legume e hay, T/A	Crop productivity index for optimum management
13A	Bluford silt loam, 0 to 2 percent slopes	17.89	24.8%		136	44	55	3.39	101
12A	Wynoose silt loam, 0 to 2 percent slopes	16.91	23.5%		128	42	51	4.26	97
**7D2	Atlas silt loam, 10 to 18 percent slopes, eroded	16.77	23.3%		**98	**34	**39	**2.95	**76
3225A	Holton silt loam, 0 to 2 percent slopes, frequently flooded	8.63	12.0%		135	43	50	4.26	100
**7C2	Atlas silt loam, 5 to 10 percent slopes, eroded	6.26	8.7%		**105	**37	**41	**3.16	**81
**14B	Ava silt loam, 2 to 5 percent slopes	2.52	3.5%		**134	**44	**54	0.00	**99
**652C2	Passport silt loam, 5 to 10 percent slopes, eroded	1.48	2.1%		**116	**39	**51	**3.85	**88
W	Water	1.23	1.7%						
**7C3	Atlas silty clay loam, 5 to 10 percent slopes, severely eroded	0.42	0.6%		**87	**30	**34	**2.60	**67
Weighted Average					119.4	39.5	47.3	3.40	90.1

Table: Optimum Crop Productivity Ratings for Illinois Soil by K.R. Olson and J.M. Lang, Office of Research, ACES, University of Illinois at Champaign-Urbana. Version: 1/2/2012 Amended Table S2 B811

Crop yields and productivity indices for optimum management (B811) are maintained at the following NRES web site: <http://soilproductivity.nres.illinois.edu/>

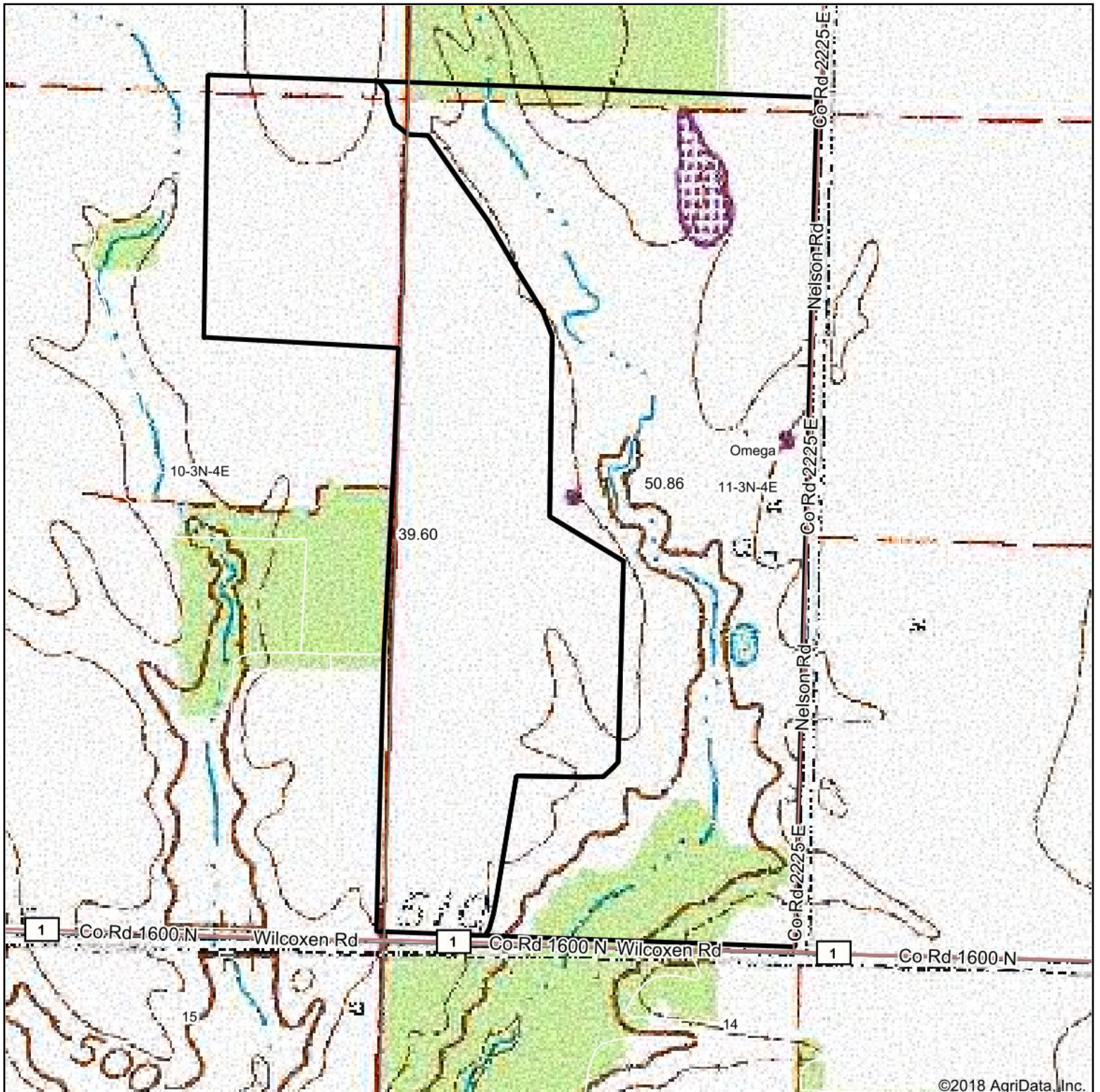
** Indexes adjusted for slope and erosion according to Bulletin 811 Table S3

e Soils in the well drained group were not rated for grass-legume and are shown with a zero "0".

Soils data provided by USDA and NRCS. Soils data provided by University of Illinois at Champaign-Urbana.

*c: Using Capabilities Class Dominant Condition Aggregation Method

Topography Map



map center: 38° 42' 41.25, -88° 43' 56.68

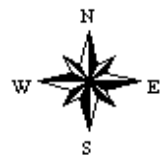
0ft 486ft 971ft



Maps Provided By:



11-3N-4E
Marion County
Illinois



5/18/2018