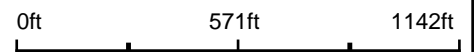


Aerial Map



Map Center: 38° 42' 15.31, -89° 50' 30.72



14-3N-7W
Madison County
Illinois



1/10/2020



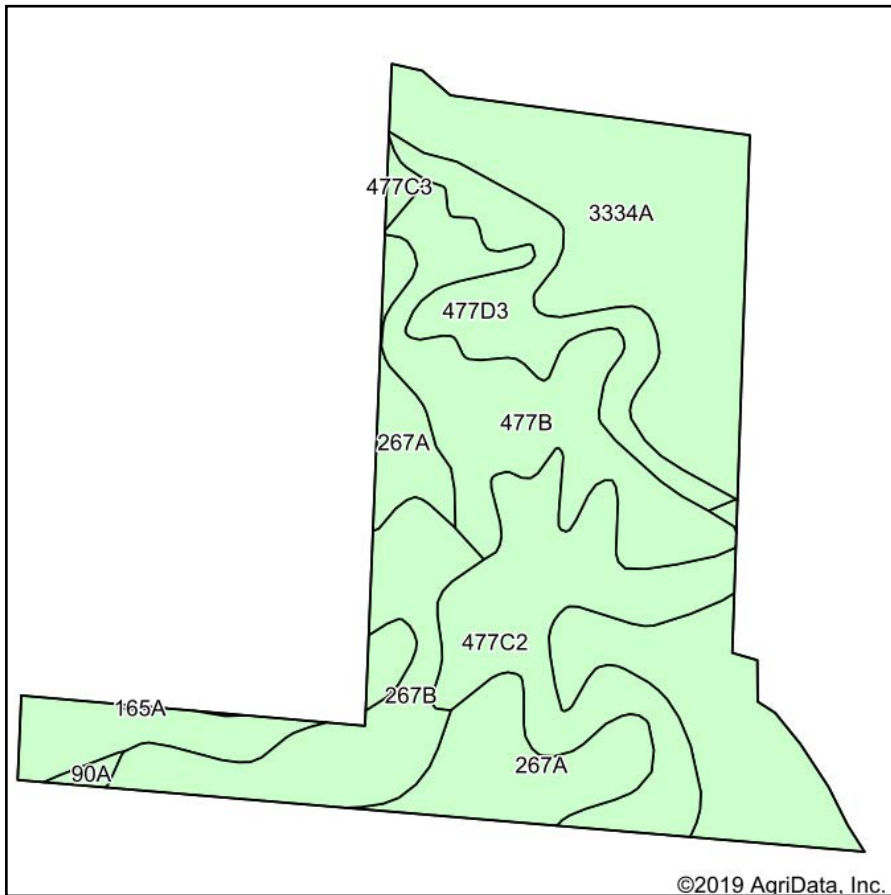
Maps Provided By:



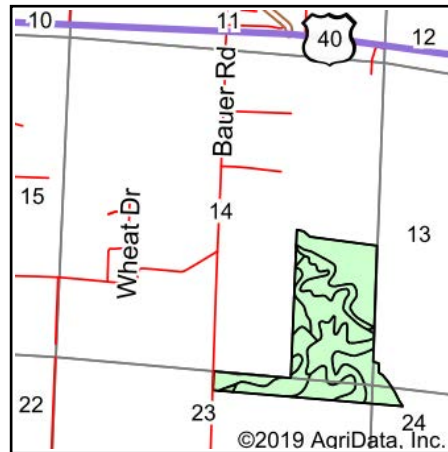
© AgriData, Inc. 2019 www.AgriDataInc.com

Field borders provided by Farm Service Agency as of 5/21/2008. Soils data provided by University of Illinois at Champaign-Urbana.

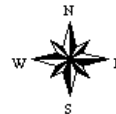
Soils Map



Soils data provided by USDA and NRCS.



State: **Illinois**
 County: **Madison**
 Location: **14-3N-7W**
 Township: **Jarvis**
 Acres: **103.5**
 Date: **1/10/2020**



Area Symbol: IL119, Soil Area Version: 14									
Code	Soil Description	Acres	Percent of field	Il. State Productivity Index Legend	Corn Bu/A	Soybeans Bu/A	Wheat Bu/A	Crop productivity index for optimum management	
3334A	Birds silt loam, 0 to 2 percent slopes, frequently flooded	33.54	32.4%		157	51	61	117	
267A	Caseyville silt loam, 0 to 2 percent slopes	16.69	16.1%		171	52	65	126	
**477C2	Winfield silt loam, 5 to 10 percent slopes, eroded	16.45	15.9%		**151	**47	**59	**111	
**477B	Winfield silt loam, 2 to 5 percent slopes	15.60	15.1%		**160	**50	**62	**118	
**267B	Caseyville silt loam, 2 to 5 percent slopes	11.05	10.7%		**169	**51	**64	**125	
**477D3	Winfield silty clay loam, 10 to 18 percent slopes, severely eroded	9.12	8.8%		**131	**41	**51	**96	
**477C3	Winfield silty clay loam, 5 to 10 percent slopes, severely eroded	0.56	0.5%		**139	**43	**54	**102	
90A	Bethalto silt loam, 0 to 2 percent slopes	0.42	0.4%		183	57	71	134	
165A	Weir silt loam, 0 to 2 percent slopes	0.07	0.1%		141	46	56	106	
Weighted Average					157.7	49.5	60.9	116.6	

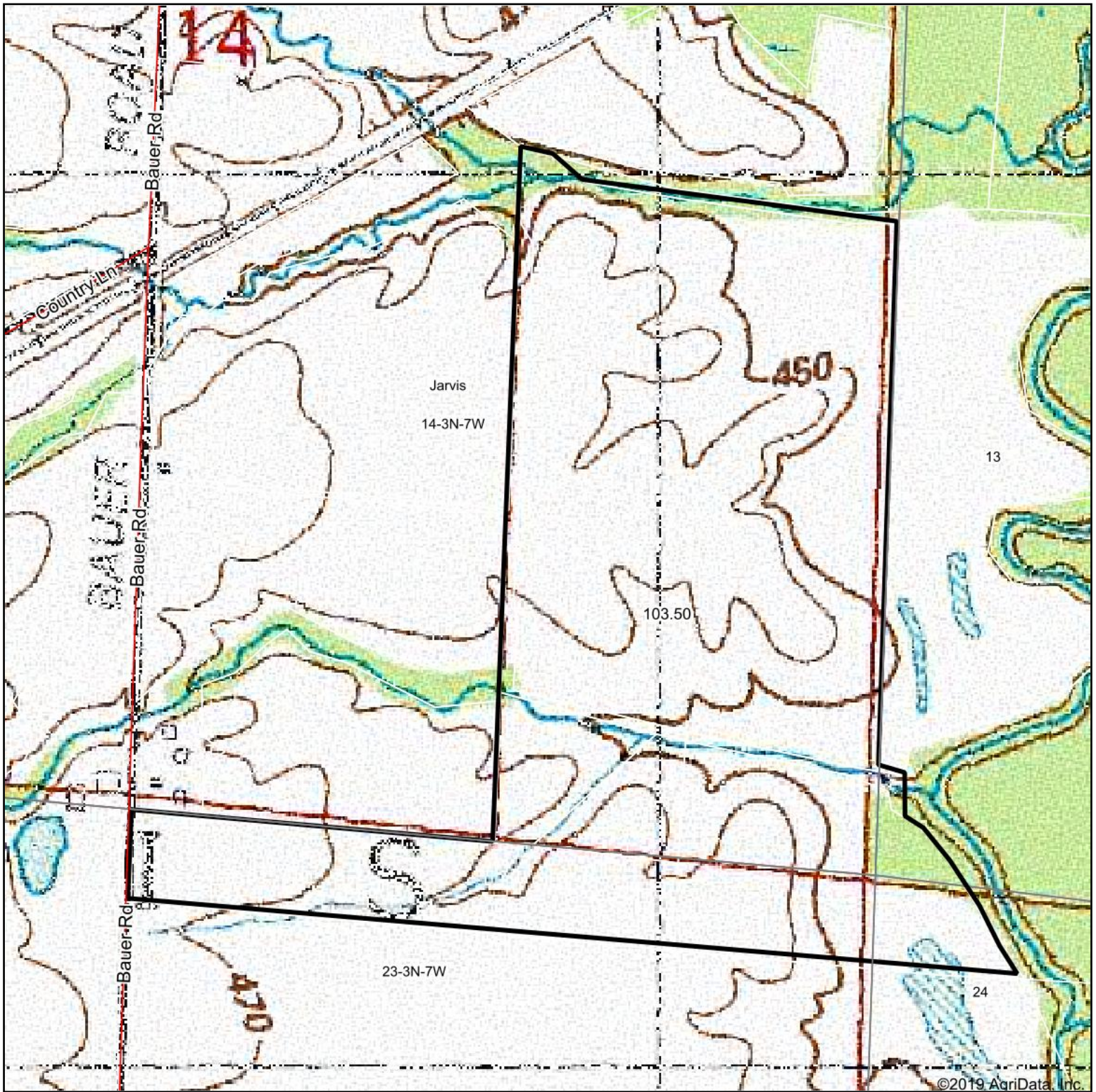
Table: Optimum Crop Productivity Ratings for Illinois Soil by K.R. Olson and J.M. Lang, Office of Research, ACES, University of Illinois at Champaign-Urbana. Version: 1/2/2012 Amended Table S2 B811

Crop yields and productivity indices for optimum management (B811) are maintained at the following NRES web site: <http://soilproductivity.nres.illinois.edu/>

** Indexes adjusted for slope and erosion according to Bulletin 811 Table S3

Soils data provided by USDA and NRCS. Soils data provided by University of Illinois at Champaign-Urbana.

Topography Map

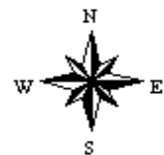


map center: 38° 42' 15.31, -89° 50' 30.72

0ft 571ft 1142ft



14-3N-7W
Madison County
Illinois



1/10/2020

Maps Provided By:
 **surety**[®]
CUSTOMIZED ONLINE MAPPING
© AgriData, Inc. 2019 www.AgrIDataInc.com