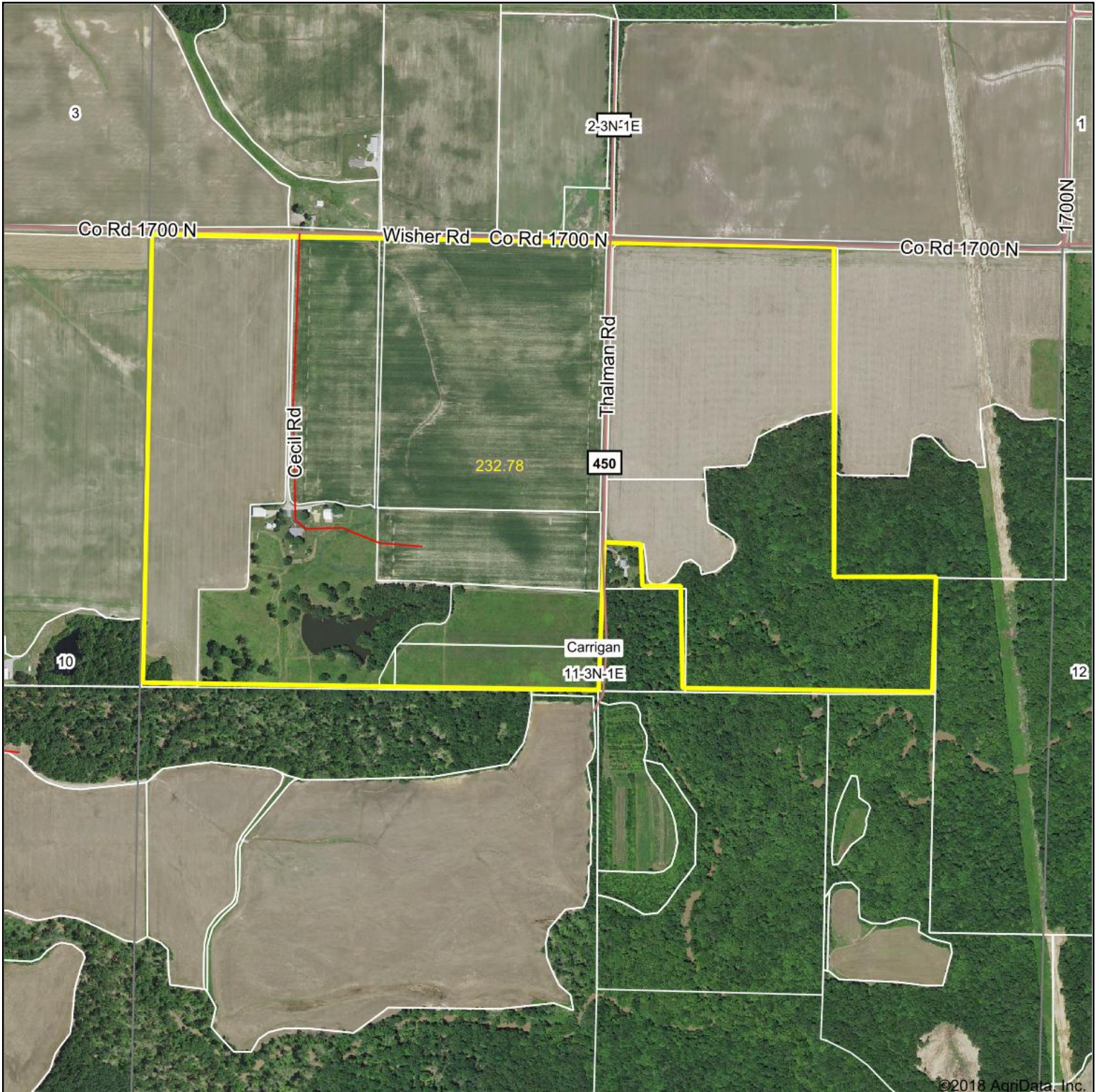
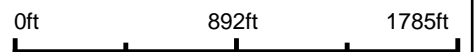


Aerial Map



©2018 AgriData, Inc.

map center: 38° 42' 59.3, -89° 3' 35.6

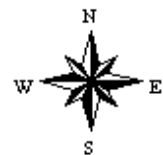


Maps Provided By:



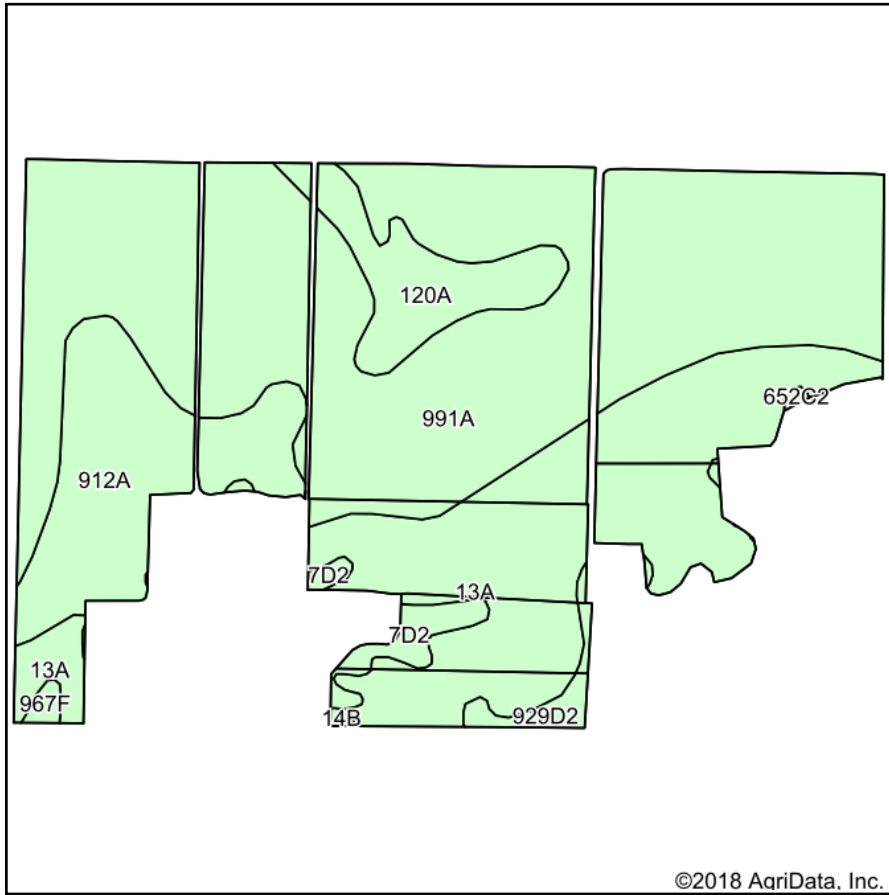
© AgriData, Inc. 2018 www.AgriDataInc.com

11-3N-1E
Marion County
Illinois



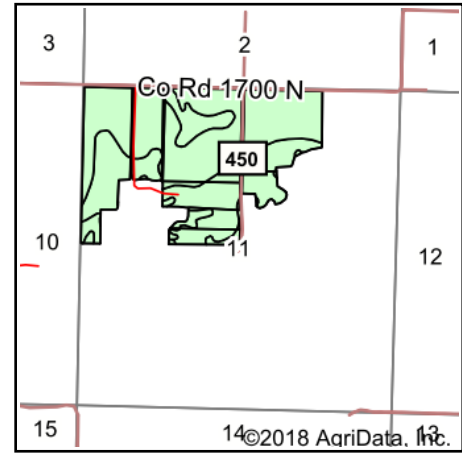
4/12/2018

Soils Map



Soils data provided by USDA and NRCS.

©2018 AgriData, Inc.



State: **Illinois**
 County: **Marion**
 Location: **11-3N-1E**
 Township: **Carrigan**
 Acres: **171.06**
 Date: **4/8/2018**



Maps Provided By:



Area Symbol: IL121, Soil Area Version: 14

Code	Soil Description	Acres	Percent of field	Il. State Productivity Index Legend	Corn Bu/A	Soybeans Bu/A	Wheat Bu/A	Crop productivity index for optimum management
991A	Cisne-Huey silt loams, 0 to 2 percent slopes	92.74	54.2%		133	45	52	102
13A	Bluford silt loam, 0 to 2 percent slopes	42.29	24.7%		136	44	55	101
912A	Hoyleton-Darmstadt silt loams, 0 to 2 percent slopes	20.30	11.9%		134	45	52	103
120A	Huey silt loam, 0 to 2 percent slopes	9.55	5.6%		109	43	43	89
**7D2	Atlas silt loam, 10 to 18 percent slopes, eroded	3.08	1.8%		**98	**34	**39	**76
**929D2	Ava-Hickory silt loams, 10 to 18 percent slopes, eroded	2.04	1.2%		**108	**36	**45	**82
**967F	Hickory-Gosport silt loams, 18 to 35 percent slopes	0.60	0.4%		**80	**27	**33	**61
**652C2	Passport silt loam, 5 to 10 percent slopes, eroded	0.27	0.2%		**116	**39	**51	**88
**14B	Ava silt loam, 2 to 5 percent slopes	0.19	0.1%		**134	**44	**54	**99
Weighted Average					131.4	44.3	51.9	100.3

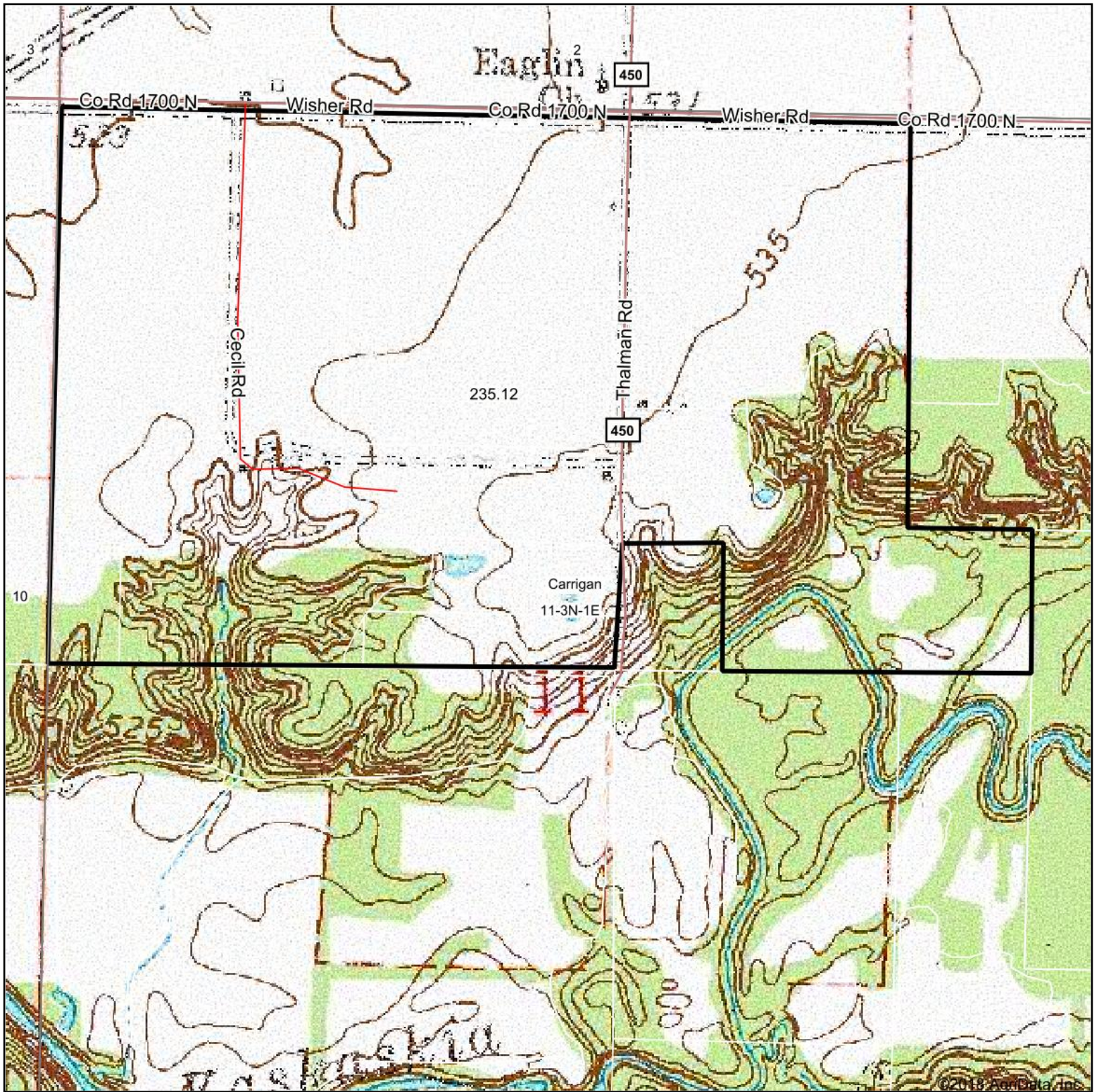
Table: Optimum Crop Productivity Ratings for Illinois Soil by K.R. Olson and J.M. Lang, Office of Research, ACES, University of Illinois at Champaign-Urbana. Version: 1/2/2012 Amended Table S2 B811

Crop yields and productivity indices for optimum management (B811) are maintained at the following NRES web site: <http://soilproductivity.nres.illinois.edu/>

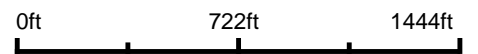
** Indexes adjusted for slope and erosion according to Bulletin 811 Table S3

Soils data provided by USDA and NRCS. Soils data provided by University of Illinois at Champaign-Urbana.

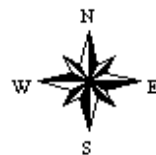
Topography Map



map center: 38° 42' 56.77, -89° 3' 35.8



11-3N-1E
Marion County
Illinois



4/8/2018