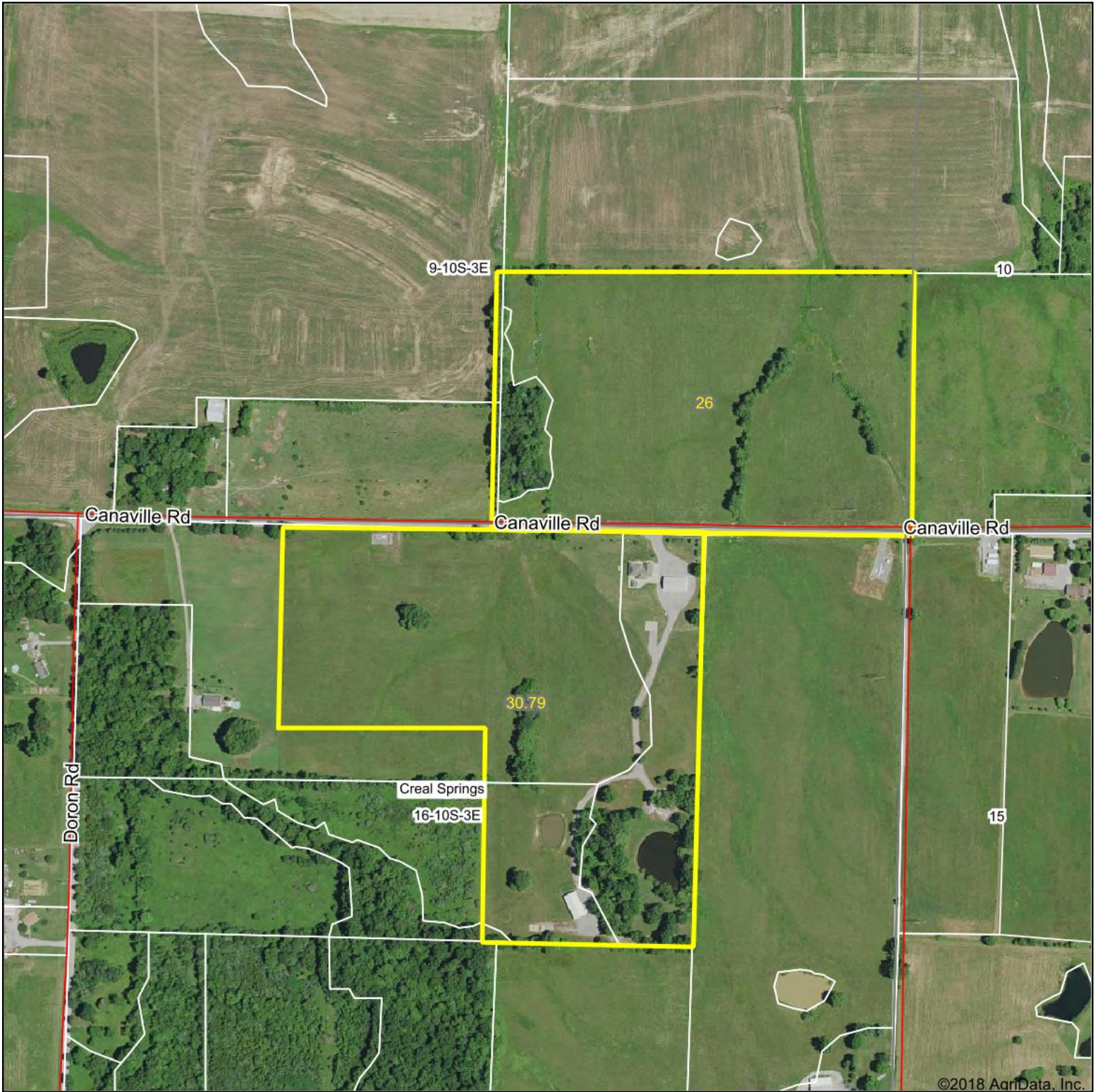
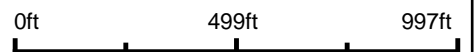


Aerial Map



Brett Berger, ARA

map center: 37.655808, -88.877980



Maps Provided By:

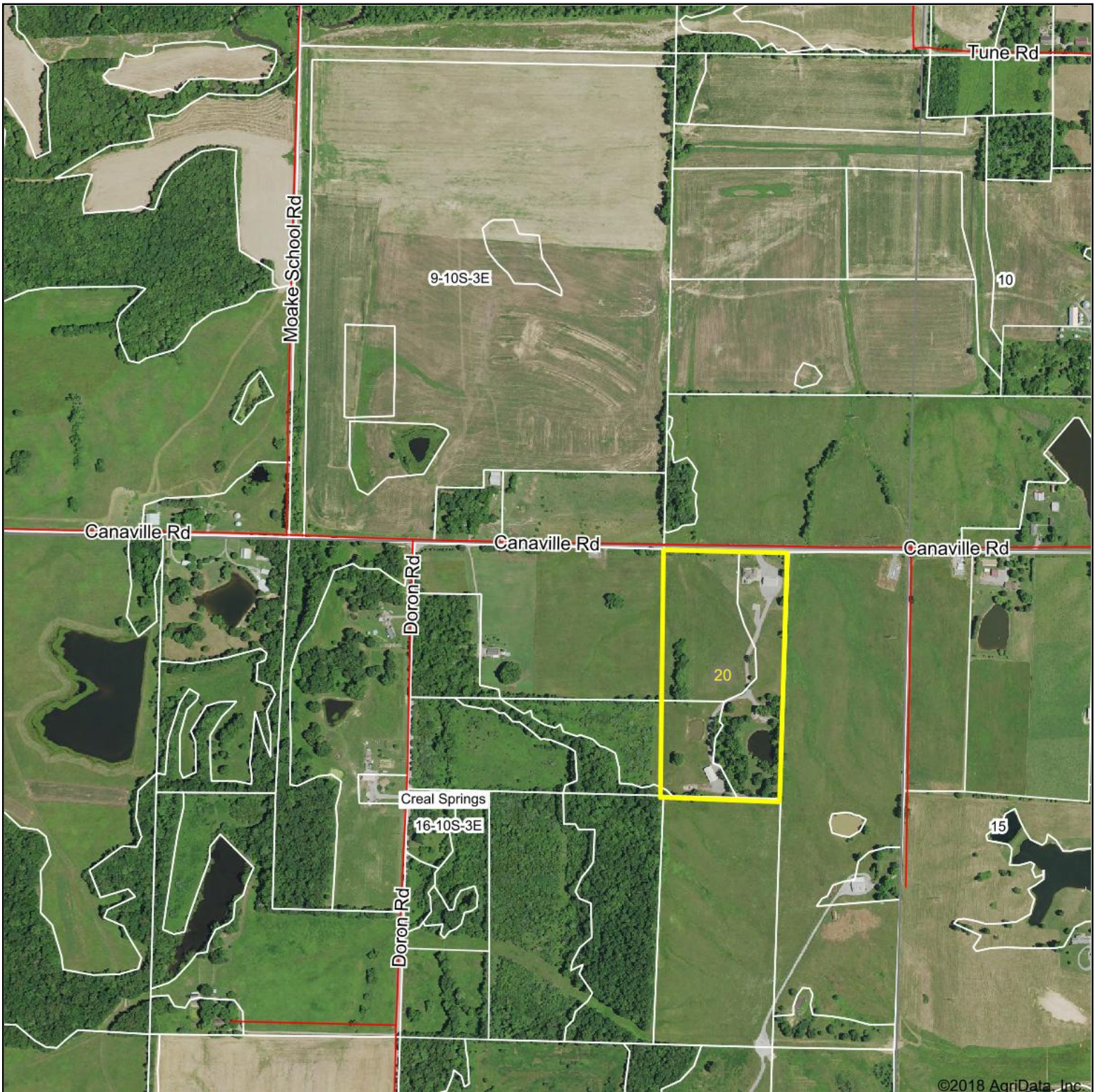
CUSTOMIZED ONLINE MAPPING
© AgriData, Inc. 2018 www.AgrIDataInc.com

16-10S-3E
Williamson County
Illinois



3/21/2018

Aerial Map

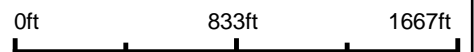


©2018 AgriData, Inc.



Brett Berger, ARA

map center: 37.655929, -88.880706



Maps Provided By:

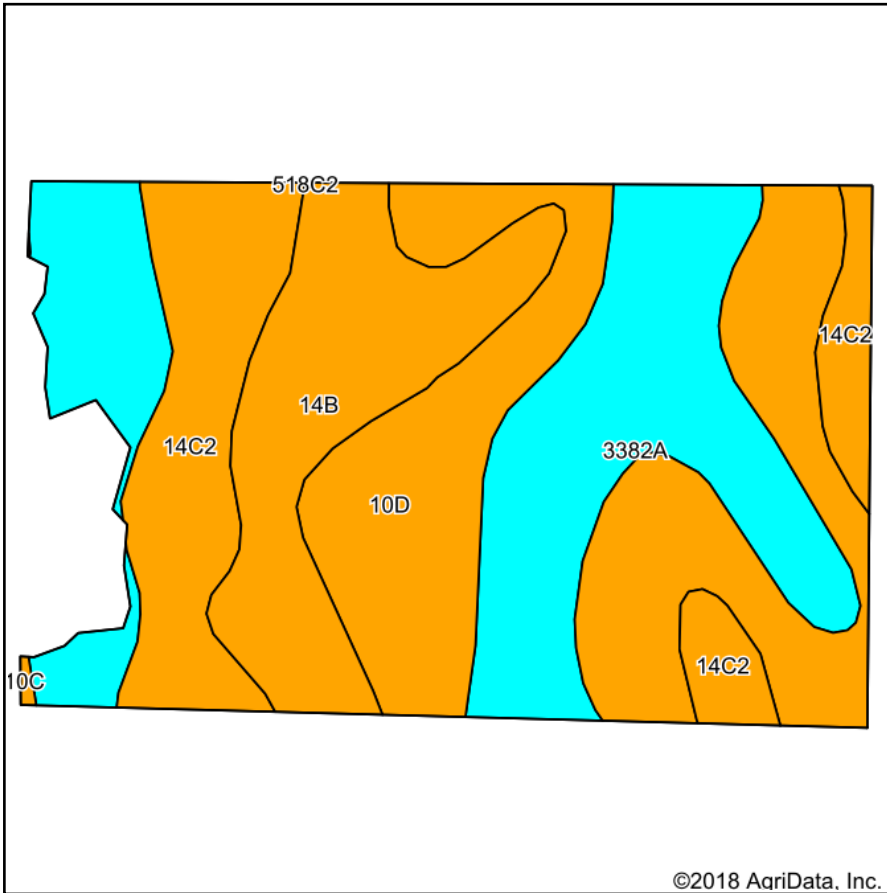
CUSTOMIZED ONLINE MAPPING
© AgriData, Inc. 2018 www.AgriDataInc.com

16-10S-3E
Williamson County
Illinois

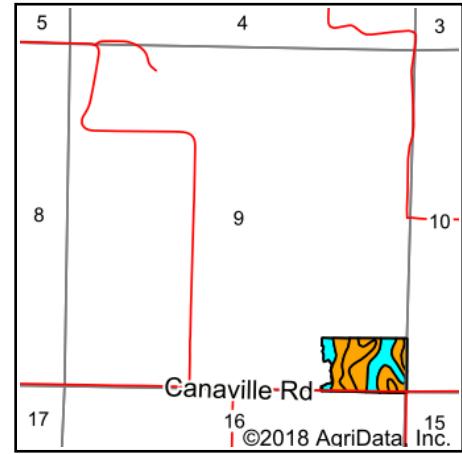


4/12/2018

Soils Map



Soils data provided by USDA and NRCS.



State: **Illinois**
 County: **Williamson**
 Location: **9-10S-3E**
 Township: **Creal Springs**
 Acres: **23.96**
 Date: **3/21/2018**



Area Symbol: IL199, Soil Area Version: 12

Code	Soil Description	Acres	Percent of field	II. State Productivity Index Legend	Corn Bu/A	Soybeans Bu/A	Wheat Bu/A	Crop productivity index for optimum management
**10D	Plumfield silty clay loam, 10 to 18 percent slopes	8.14	34.0%		**97	**32	**37	**74
3382A	Belknap silt loam, 0 to 2 percent slopes, frequently flooded	7.18	30.0%		156	52	63	117
**14C2	Ava silt loam, 5 to 10 percent slopes, eroded	4.44	18.5%		**122	**40	**50	**90
**14B	Ava silt loam, 2 to 5 percent slopes	4.20	17.5%		**134	**44	**54	**99
Weighted Average					125.8	41.6	50.2	94.2

Table: Optimum Crop Productivity Ratings for Illinois Soil by K.R. Olson and J.M. Lang, Office of Research, ACES, University of Illinois at Champaign-Urbana. Version: 1/2/2012 Amended Table S2 B811

Crop yields and productivity indices for optimum management (B811) are maintained at the following NRES web site: <http://soilproductivity.nres.illinois.edu/>

** Indexes adjusted for slope and erosion according to Bulletin 811 Table S3

Soils data provided by USDA and NRCS. Soils data provided by University of Illinois at Champaign-Urbana.

*c: Using Capabilities Class Dominant Condition Aggregation Method