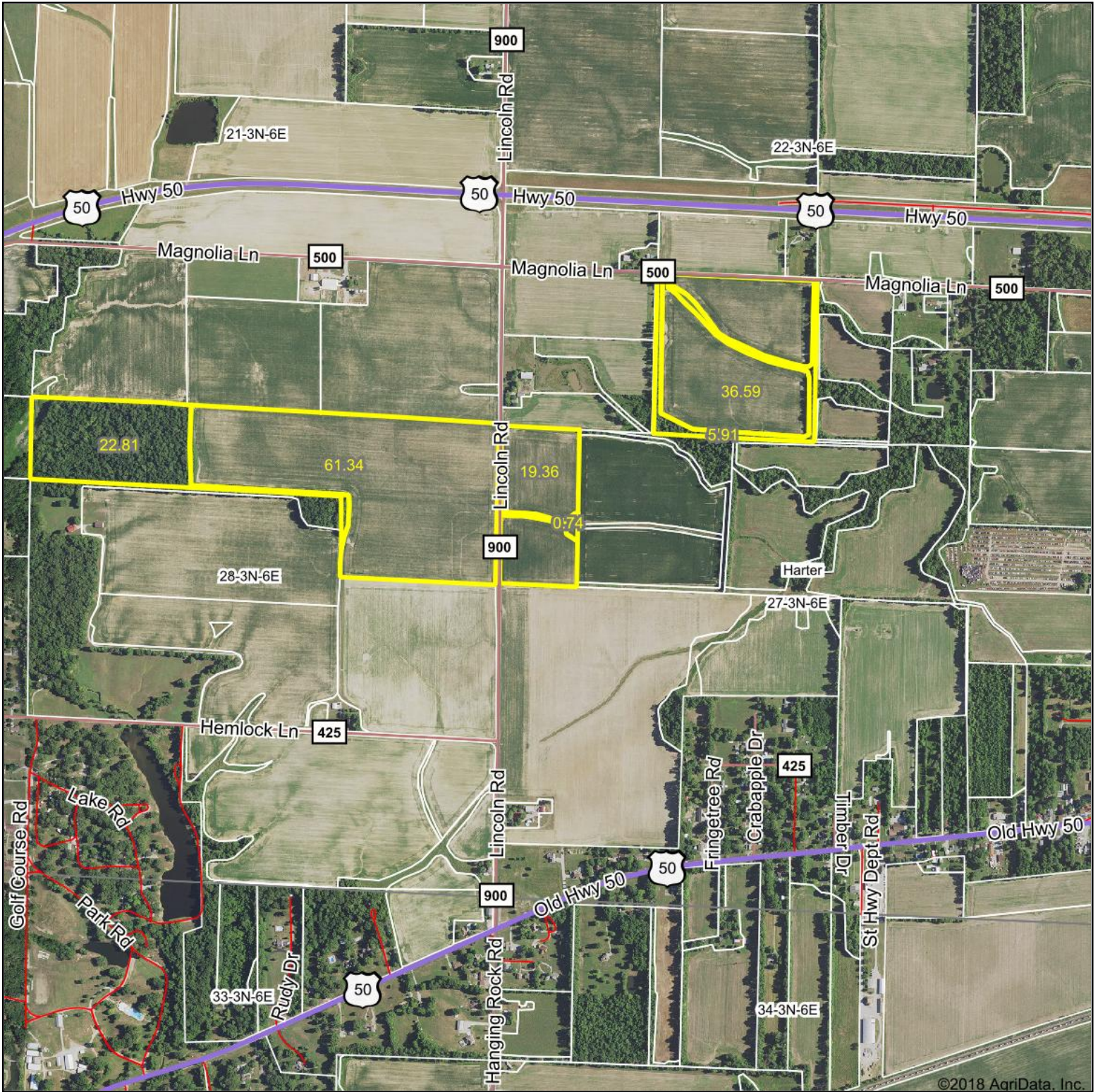
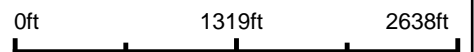


# Aerial Map



©2018 AgriData, Inc.

map center: 38° 40' 21.64, -88° 31' 30.04

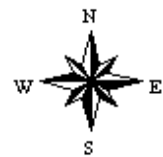


Maps Provided By:



© AgriData, Inc. 2018 www.AgriDataInc.com

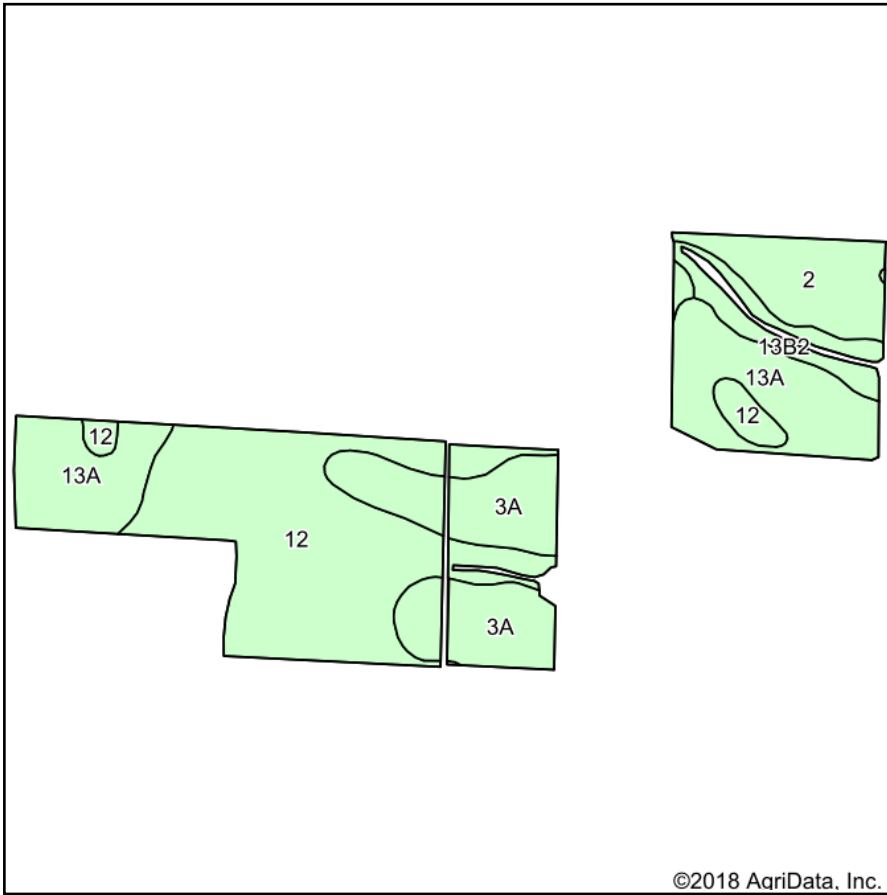
**27-3N-6E**  
**Clay County**  
**Illinois**



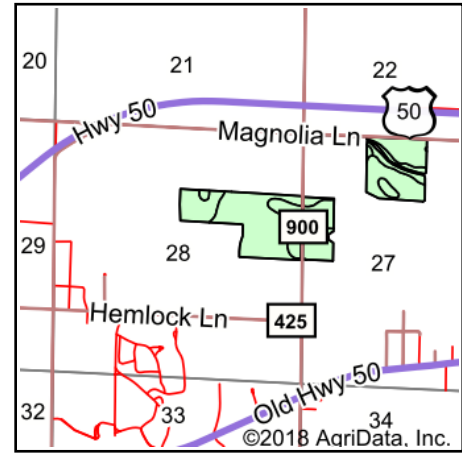
5/7/2018



# Soils Map



Soils data provided by USDA and NRCS.



State: **Illinois**  
 County: **Clay**  
 Location: **28-3N-6E**  
 Township: **Harter**  
 Acres: **117.29**  
 Date: **5/7/2018**



Maps Provided By:



## Area Symbol: IL025, Soil Area Version: 12

Code	Soil Description	Acres	Percent of field	Il. State Productivity Index Legend	Corn Bu/A	Soybeans Bu/A	Wheat Bu/A	Grass-legume e hay, T/A	Crop productivity index for optimum management
12	Wynoose silt loam, 0 to 2 percent slopes	48.71	41.5%		128	42	51	4.26	97
13A	Bluford silt loam, 0 to 2 percent slopes	27.48	23.4%		136	44	55	3.39	101
3A	Hoyleton silt loam, 0 to 2 percent slopes	22.51	19.2%		146	46	58	4.64	108
2	Cisne silt loam, 0 to 2 percent slopes	12.08	10.3%		149	46	59	4.64	109
**13B2	Bluford silt loam, 2 to 5 percent slopes, eroded	6.51	5.6%		**129	**42	**52	**3.22	**96
<b>Weighted Average</b>					<b>135.5</b>	<b>43.6</b>	<b>54.2</b>	<b>4.11</b>	<b>101.2</b>

**Table: Optimum Crop Productivity Ratings for Illinois Soil by K.R. Olson and J.M. Lang, Office of Research, ACES, University of Illinois at Champaign-Urbana.** Version: 1/2/2012 Amended Table S2 B811

Crop yields and productivity indices for optimum management (B811) are maintained at the following NRES web site: <http://soilproductivity.nres.illinois.edu/>

\*\* Indexes adjusted for slope and erosion according to Bulletin 811 Table S3

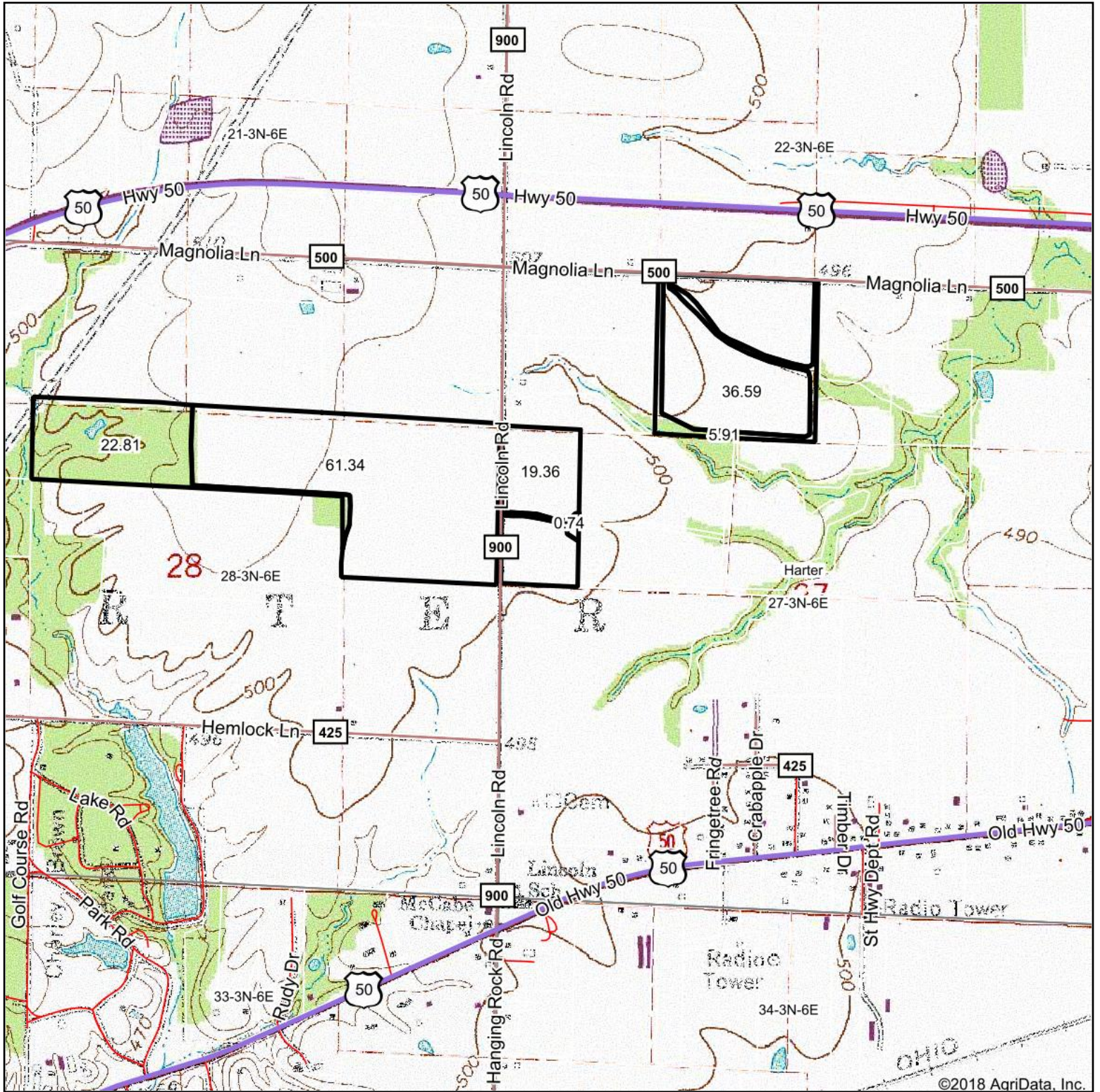
e Soils in the well drained group were not rated for grass-legume and are shown with a zero "0".

Soils data provided by USDA and NRCS. Soils data provided by University of Illinois at Champaign-Urbana.

\*c: Using Capabilities Class Dominant Condition Aggregation Method

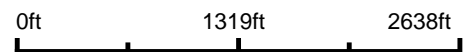


# Topography Map



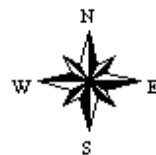
©2018 AgriData, Inc.

map center: 38° 40' 21.64, -88° 31' 30.04



Maps Provided By:  
**surety**  
 CUSTOMIZED ONLINE MAPPING  
 © AgriData, Inc. 2018 www.AgriDataInc.com

**27-3N-6E**  
**Clay County**  
**Illinois**



5/7/2018