

LEGAL DESCRIPTION

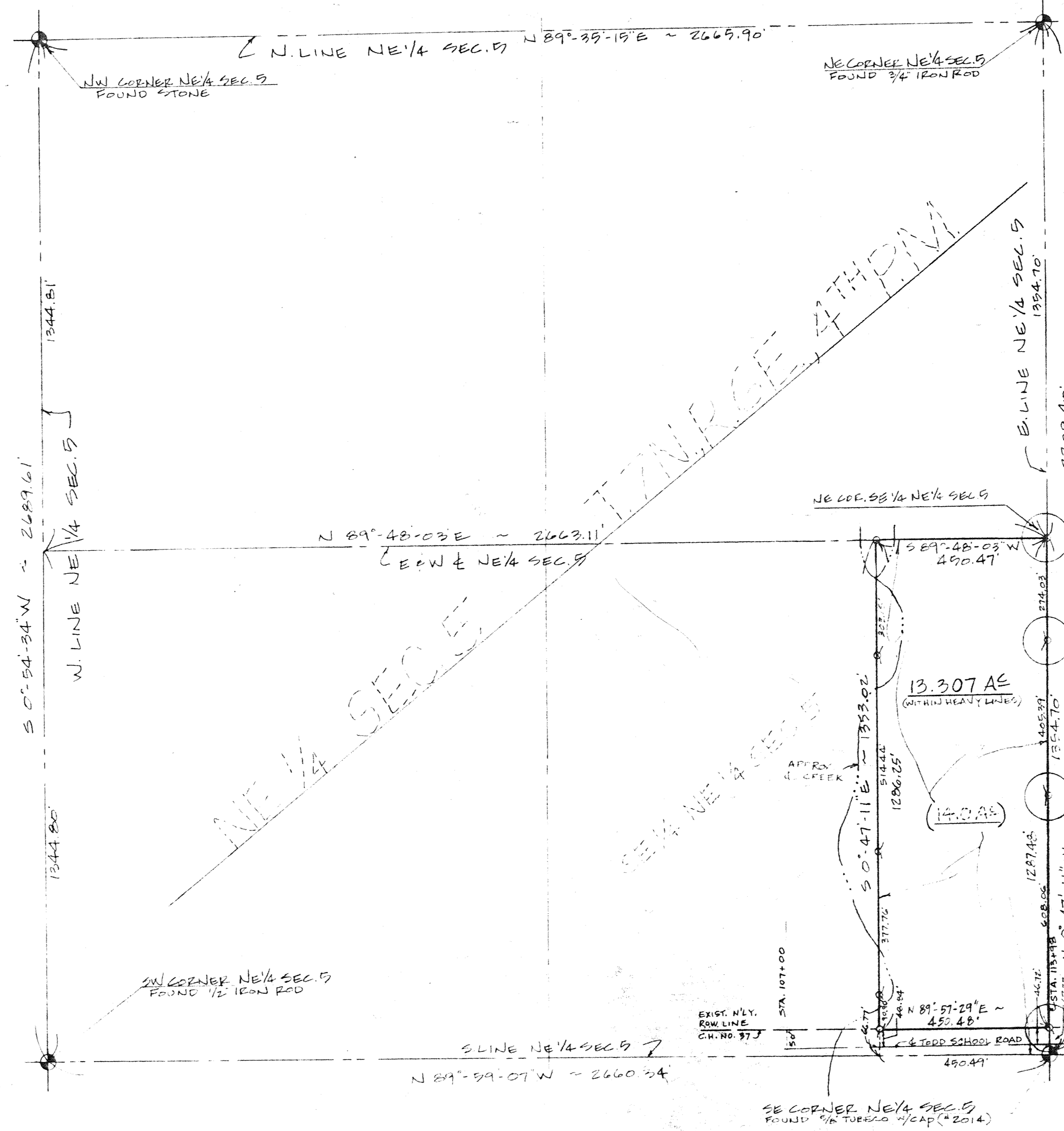
The East 14 Acres of the S.E. 1/4 of the N.E. 1/4 of Section 5, T.7N., R.6E. of the 4th P.M., situate, lying, and being in the County of Peoria, and State of Illinois.

STATE OF ILLINOIS)
COUNTY OF PEORIA) ss

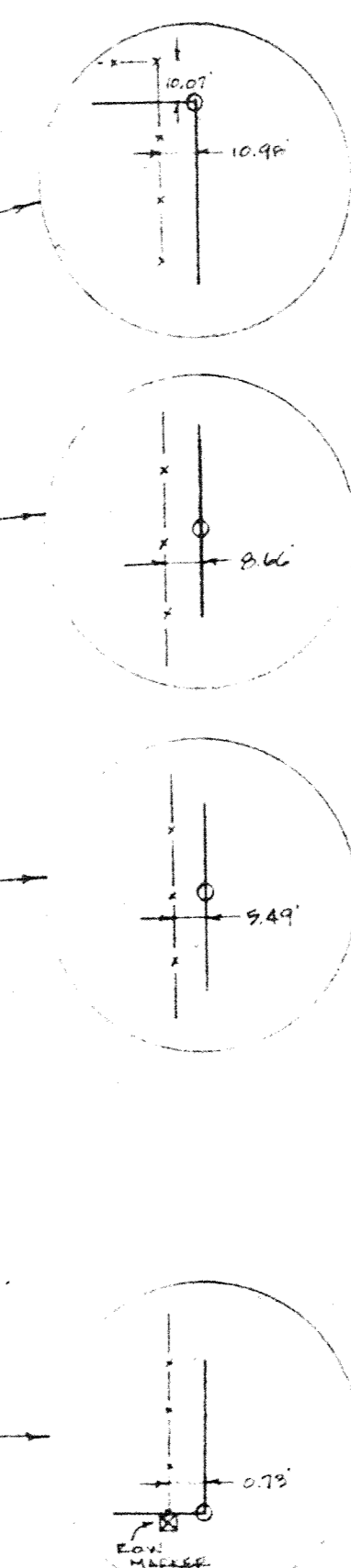
We, Zumwalt & Associates, Inc., Civil Engineers and Land Surveyors, hereby certify that we have made a boundary survey of the East 14 Acres of the SE 1/4 of the NE 1/4 of Section 5 T.7 N., R.6 E., of the 4th P.M., Peoria County, Illinois, and that the above plat is a true and correct representation of said survey as drawn to a scale of 1"=200'.

Dated this 11th day of December, A.D. 1990.

ZUMWALT & ASSOCIATES, INC.
By: *Larry R. Zumwalt*
Illinois Registered Land Surveyor #2326



FENCE DETAILS

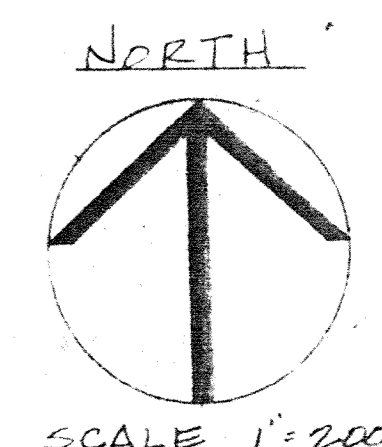


LEGEND

- - IRON SURVEY PIPE SET
- — — - EXIST. FENCE LINE
- - R.O.W. MONUMENT

90-29870

STATE OF ILLINOIS }
County of Peoria } ss Filed for record
C. DIRK MCGINNIS, County Recorder, on 10-20-90
in the office of
Records of Deeds



DESIGN BY ZSE	COMPUTED BY ZSE	ZUMWALT & ASSOCIATES, INC. PROFESSIONAL ENGINEERS & REG. LAND SURVEYORS 1040 W. OLYMPIA DRIVE PEORIA, ILLINOIS 61615 • (309)-692-5074	SURVEY PLAT LAWRENCE R. & CHARLOTTE L. MITCHELL	SHEET NO. 17,283
DATE 12/11/90	DRAWN BY JWD			
REV. NO.	DATE	BY	REVISION DESCRIPTION	PROJECT NO. 17,283