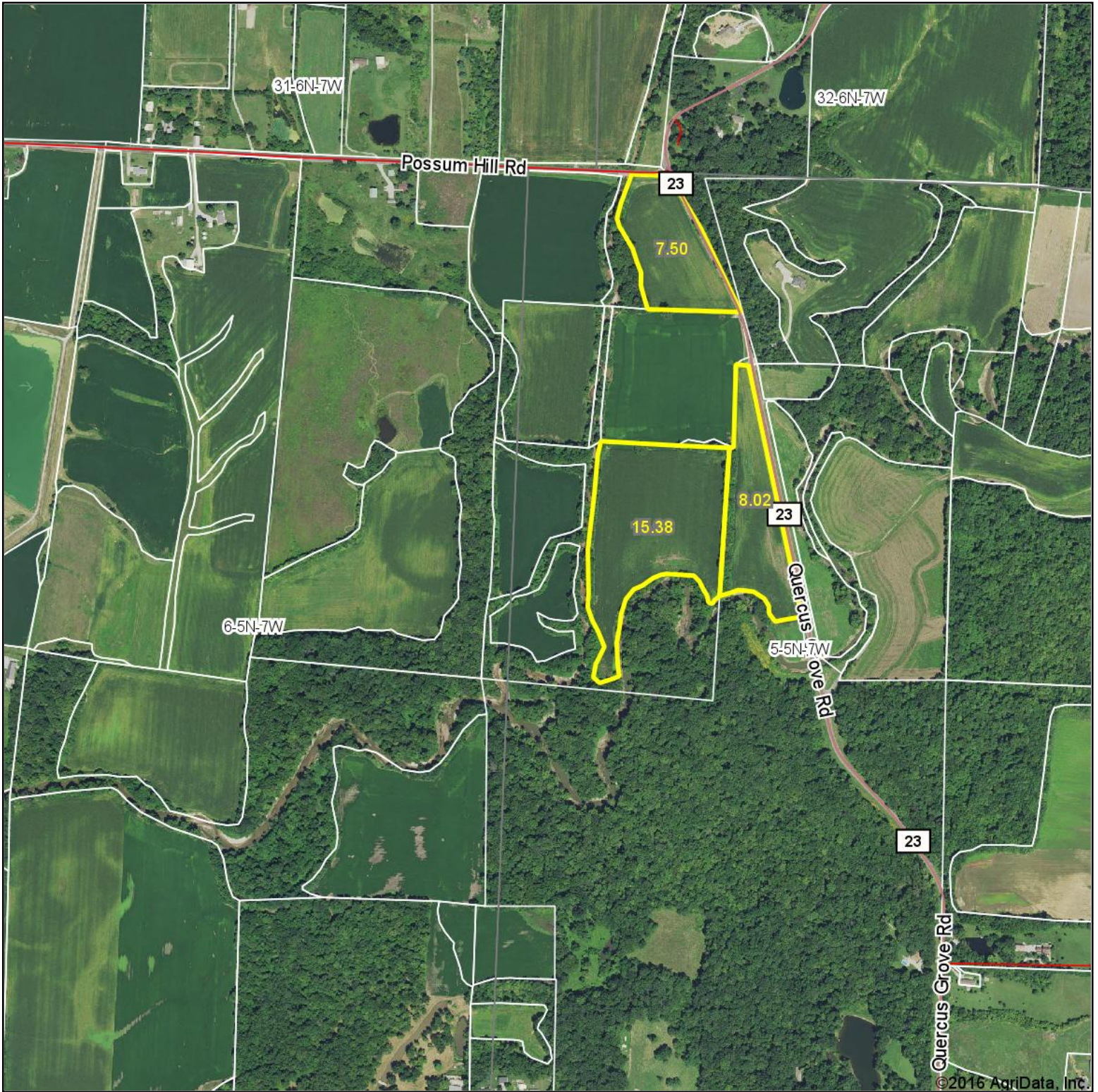
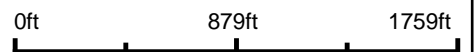


Aerial Map

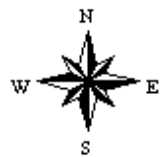


map center: 38° 54' 48.31, -89° 54' 26.34

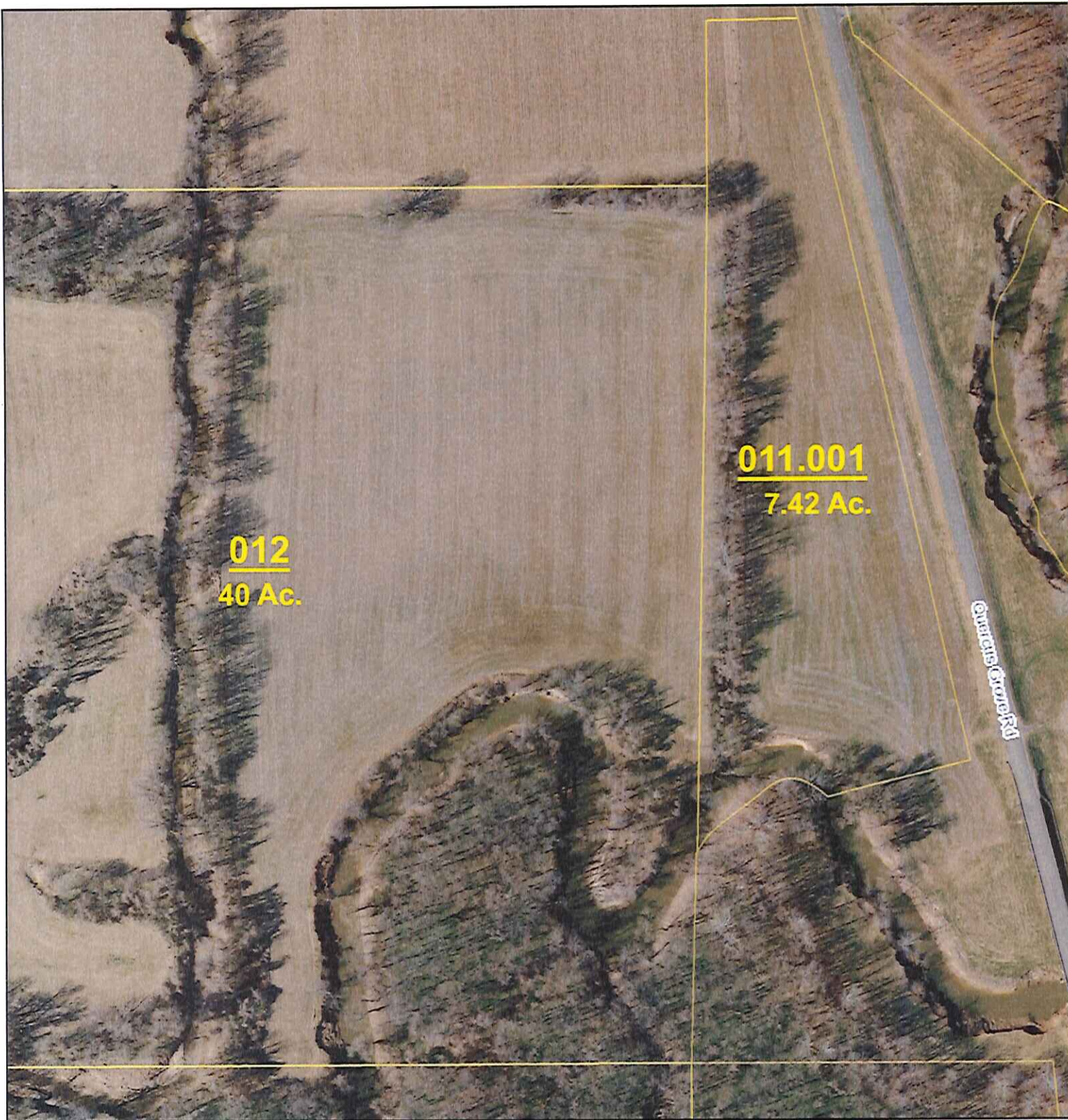


Maps Provided By:
 **surety**
CUSTOMIZED ONLINE MAPPING
© AgriData, Inc. 2016 www.AgriDataInc.com

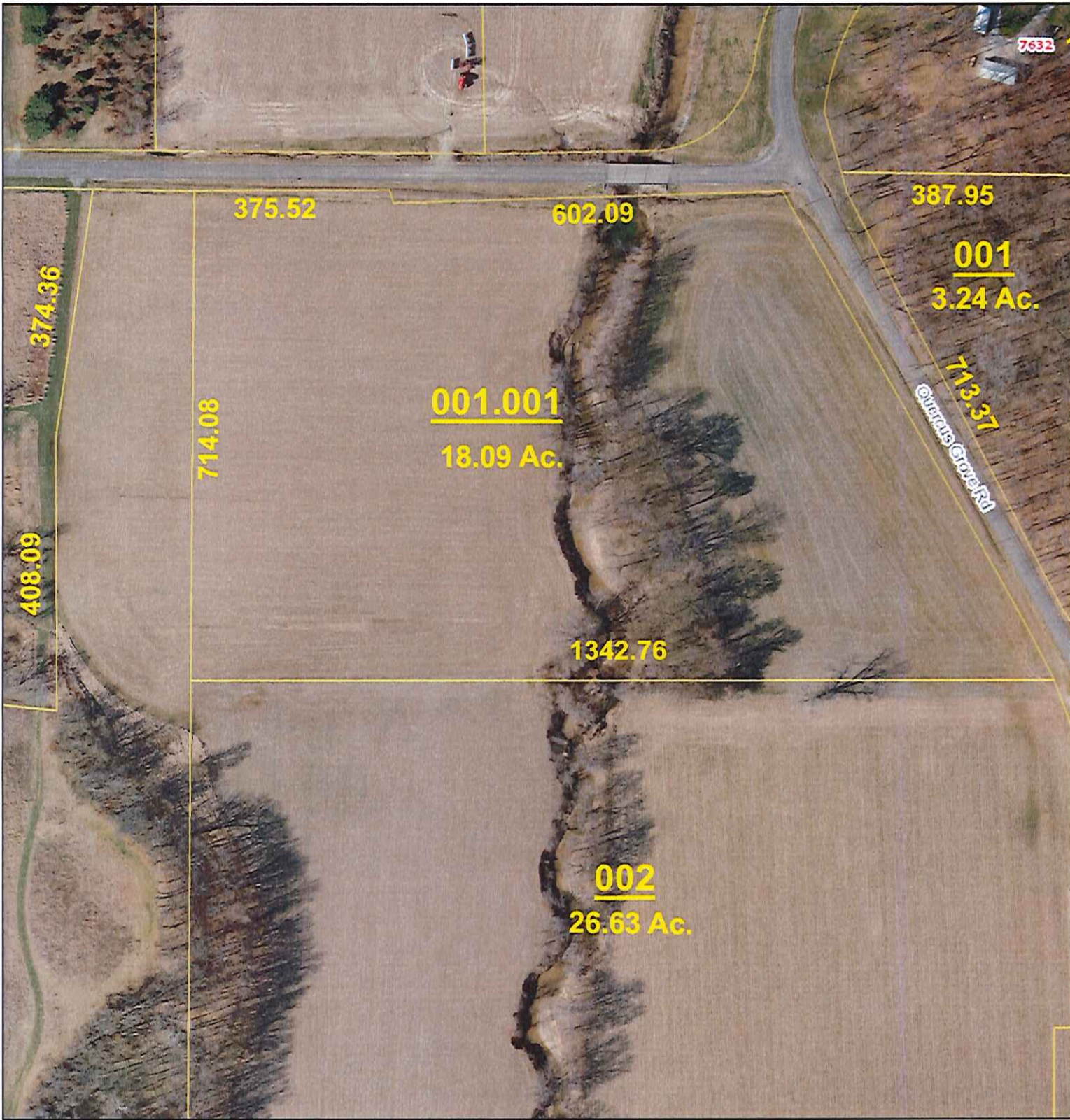
5-5N-7W
Madison County
Illinois



8/26/2016

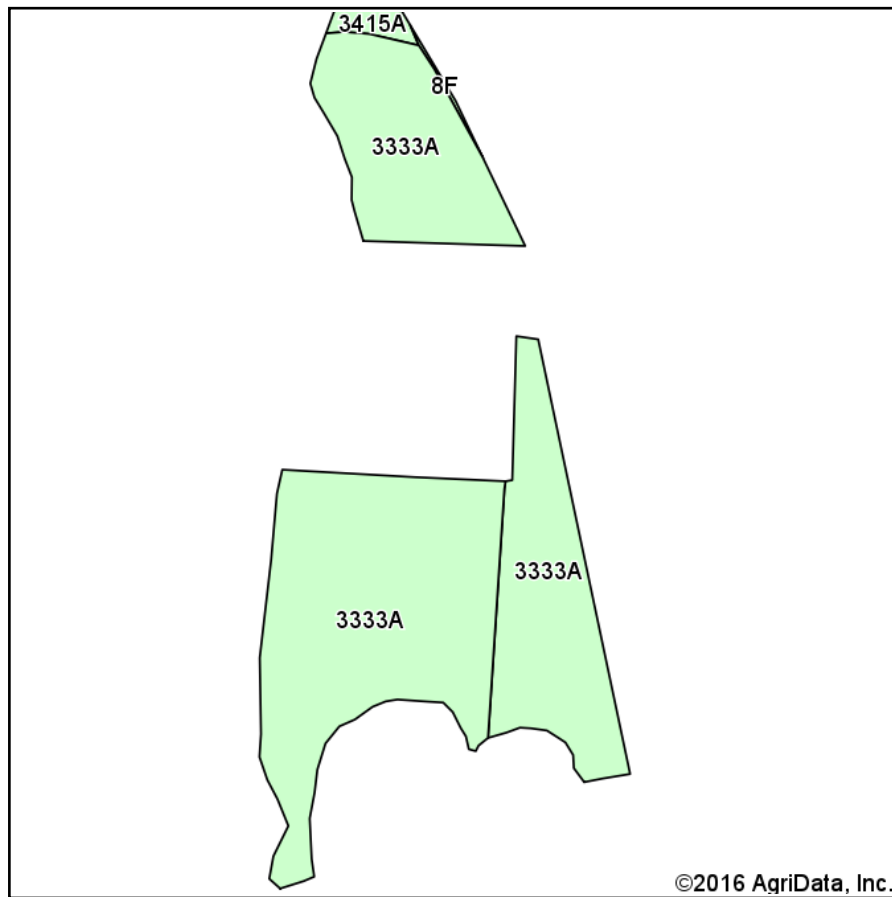


August 26, 2016

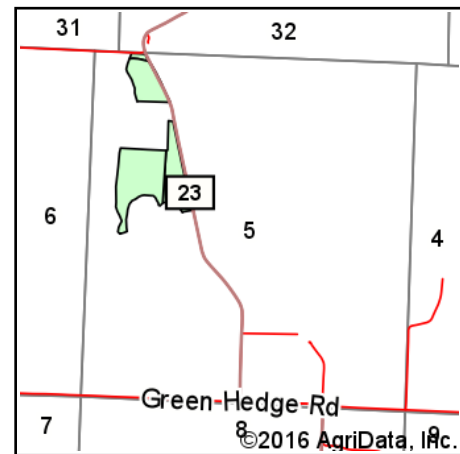


August 26, 2016

Soils Map



Soils data provided by USDA and NRCS.



State: **Illinois**
 County: **Madison**
 Location: **5-5N-7W**
 Township: **Hamel**
 Acres: **30.9**
 Date: **8/26/2016**



Area Symbol: IL119, Soil Area Version: 10

Code	Soil Description	Acres	Percent of field	Il. State Productivity Index Legend	Corn Bu/A	Soybeans Bu/A	Wheat Bu/A	Alfalfa d hay T/A	Crop productivity index for optimum management
3333A	Wakeland silt loam, 0 to 2 percent slopes, frequently flooded	30.29	98.0%		174	56	68	0.00	128
3415A	Orion silt loam, 0 to 2 percent slopes, frequently flooded	0.53	1.7%		180	57	66	0.00	131
**8F	Hickory silt loam, 18 to 35 percent slopes	0.08	0.3%		**86	**29	**35	**2.85	**65
Weighted Average					173.9	55.9	67.9	0.01	127.9

Area Symbol: IL119, Soil Area Version: 10

Table: Optimum Crop Productivity Ratings for Illinois Soil by K.R. Olson and J.M. Lang, Office of Research, ACES, University of Illinois at Champaign-Urbana. Version: 1/2/2012 Amended Table S2 B811

Crop yields and productivity indices for optimum management (B811) are maintained at the following NRES web site:

<https://www.ideals.illinois.edu/handle/2142/1027/>

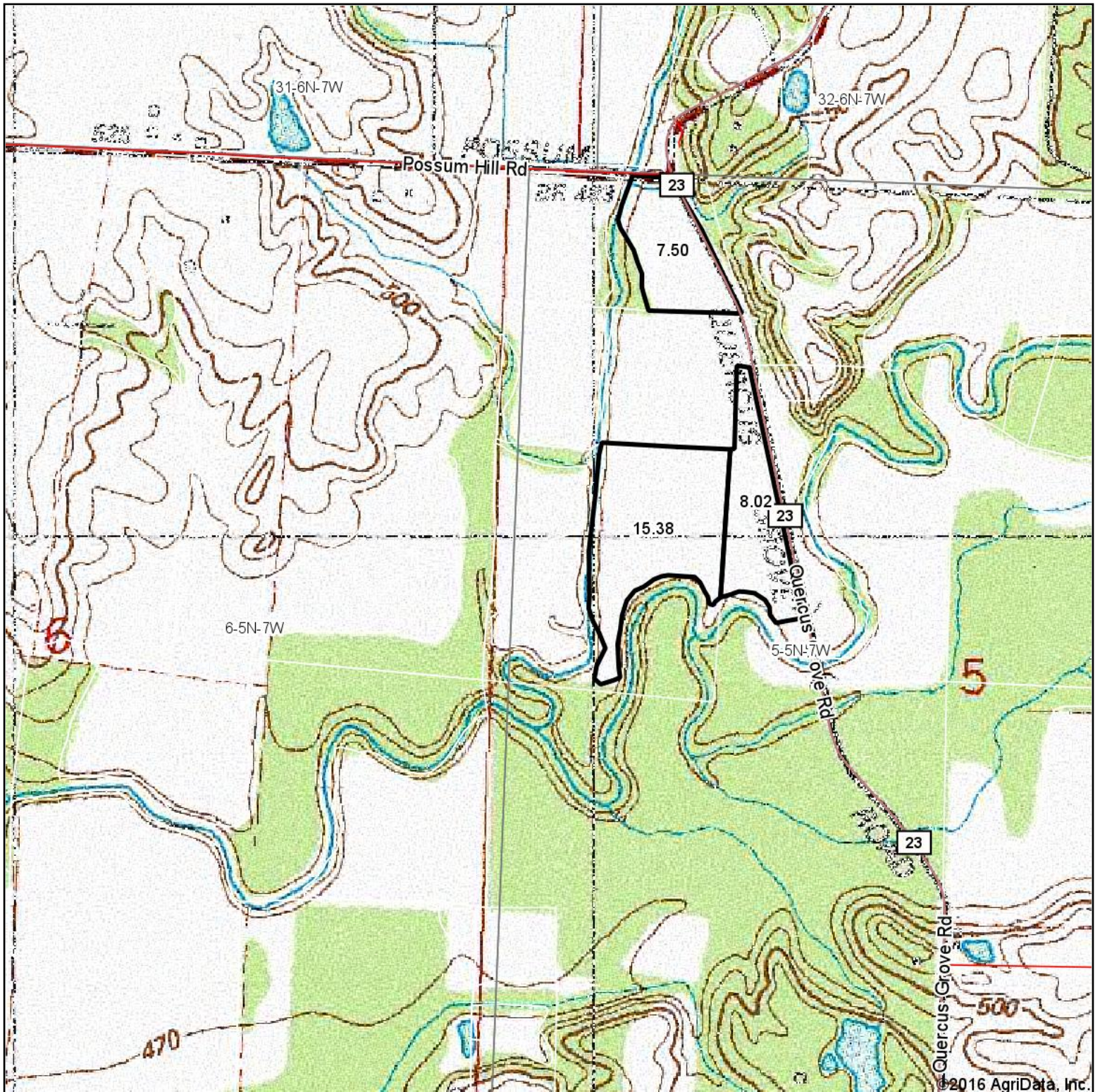
** Indexes adjusted for slope and erosion according to Bulletin 811 Table S3

d Soils in the poorly drained group were not rated for alfalfa and are shown with a zero "0".

Soils data provided by USDA and NRCS. Soils data provided by University of Illinois at Champaign-Urbana.

*c: Using Capabilities Class Dominant Condition Aggregation Method

Topography Map



map center: 38° 54' 48.31, -89° 54' 26.34

0ft 879ft 1759ft



Maps Provided By:



© AgriData, Inc. 2016

www.AgrIDataInc.com

5-5N-7W
Madison County
Illinois



8/26/2016