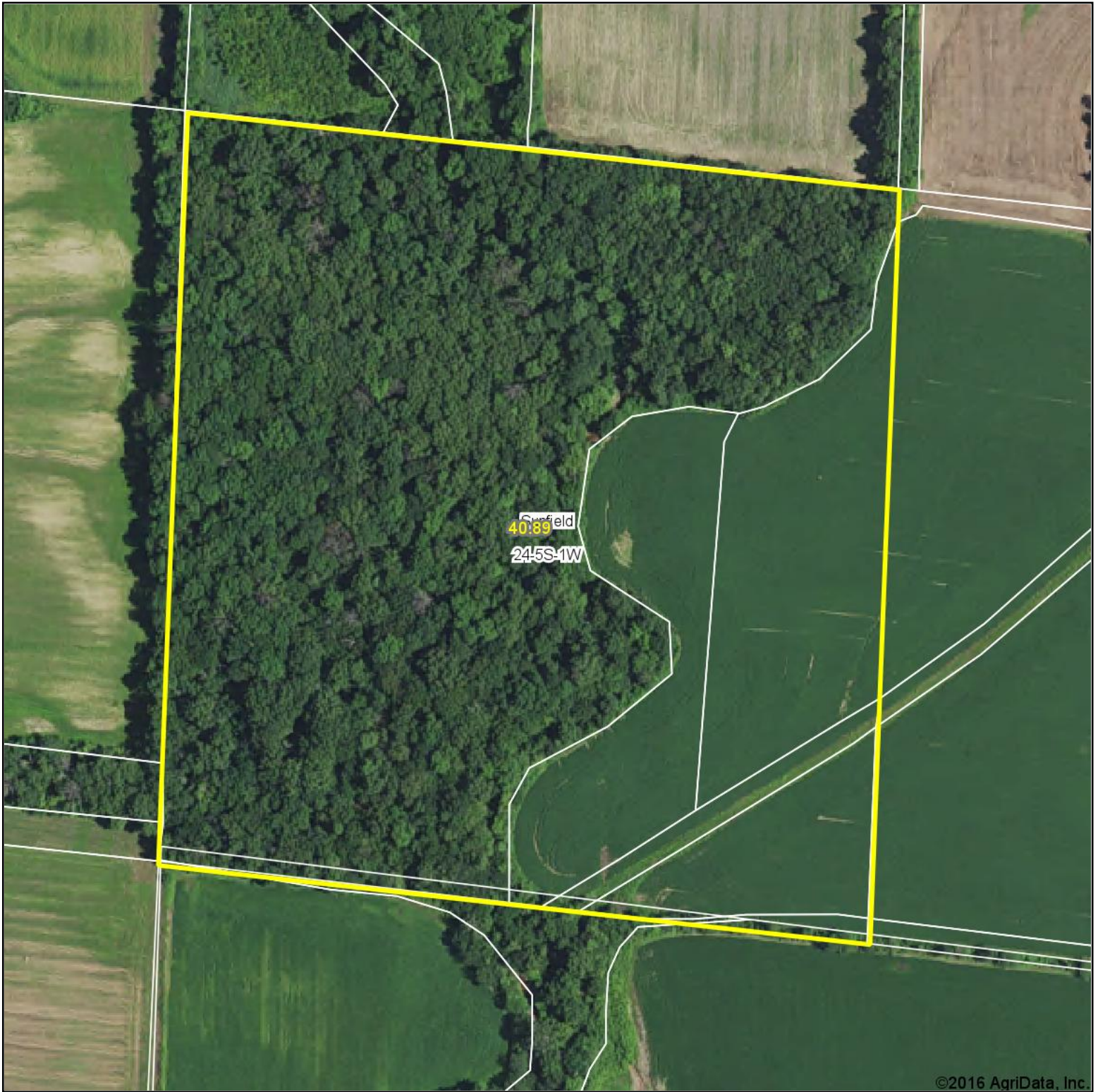
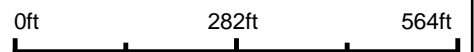


Aerial Map



©2016 AgriData, Inc.

map center: 38° 4' 20.6, -89° 9' 25.47



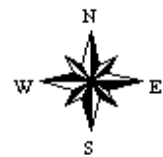
Maps Provided By:



© AgriData, Inc. 2016

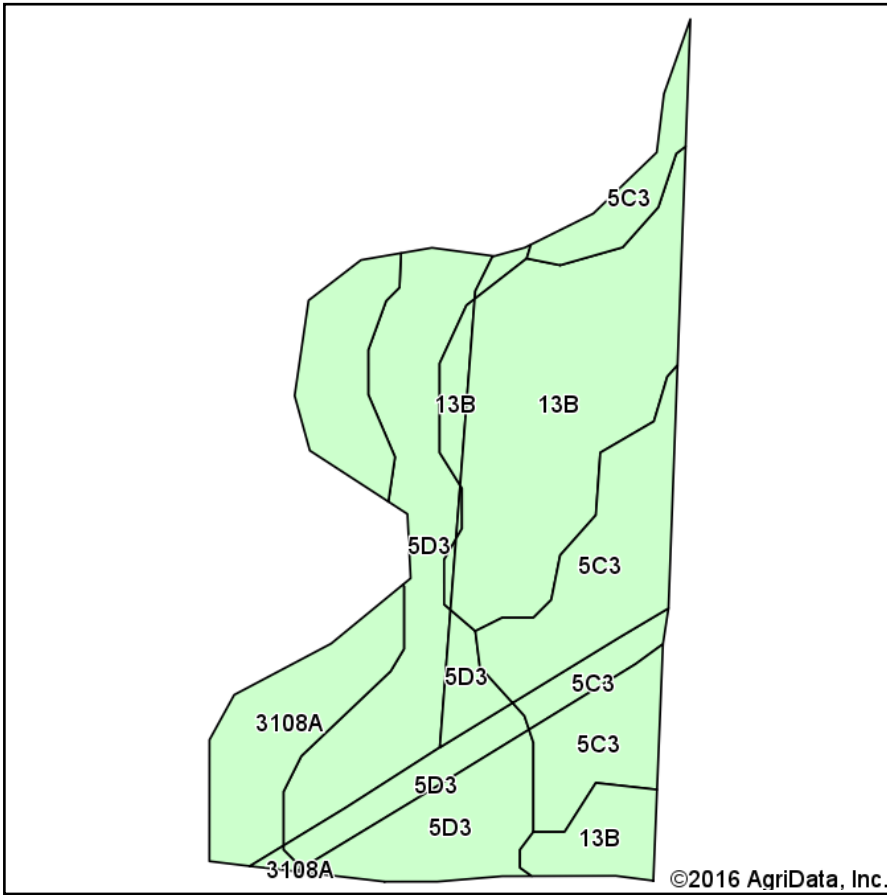
www.AgriDataInc.com

24-5S-1W
Perry County
Illinois

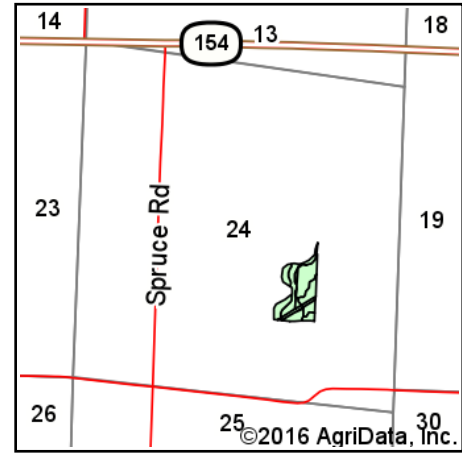


9/6/2016

Soils Map



Soils data provided by USDA and NRCS.



State: **Illinois**
 County: **Perry**
 Location: **24-5S-1W**
 Township: **Sunfield**
 Acres: **11.89**
 Date: **9/6/2016**



Maps Provided By:
surety
 CUSTOMIZED ONLINE MAPPING
 © AgriData, Inc. 2016 www.AgriDataInc.com



Area Symbol: IL145, Soil Area Version: 12

Code	Soil Description	Acres	Percent of field	Il. State Productivity Index Legend	Corn Bu/A	Soybeans Bu/A	Wheat Bu/A	Alfalfa ^d hay T/A	Crop productivity index for optimum management
**13B	Bluford silt loam, 2 to 5 percent slopes	3.66	30.8%		**135	**44	**54	0.00	**100
**5D3	Blair silty clay loam, 10 to 18 percent slopes, severely eroded	3.58	30.1%		**95	**31	**38	0.00	**72
**5C3	Blair silty clay loam, 5 to 10 percent slopes, severely eroded	2.70	22.7%		**102	**33	**41	0.00	**77
3108A	Bonnie silt loam, 0 to 2 percent slopes, frequently flooded	1.95	16.4%		149	49	59	0.00	111
Weighted Average					117.8	38.4	47.1	0.00	88.2

Area Symbol: IL145, Soil Area Version: 12

Table: Optimum Crop Productivity Ratings for Illinois Soil by K.R. Olson and J.M. Lang, Office of Research, ACES, University of Illinois at Champaign-Urbana. Version: 1/2/2012 Amended Table S2 B811

Crop yields and productivity indices for optimum management (B811) are maintained at the following NRES web site:

<https://www.ideals.illinois.edu/handle/2142/1027/>

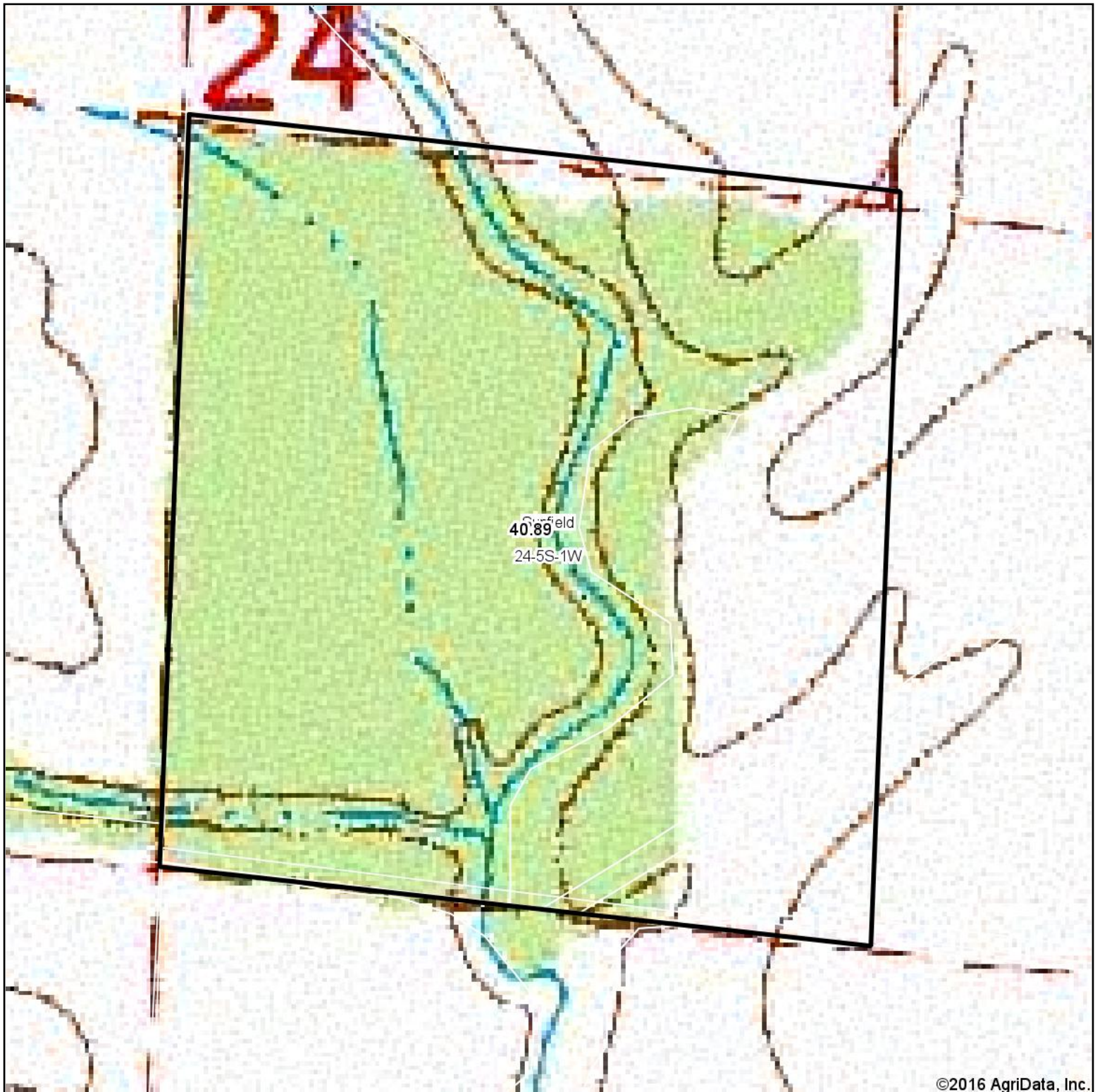
** Indexes adjusted for slope and erosion according to Bulletin 811 Table S3

^d Soils in the poorly drained group were not rated for alfalfa and are shown with a zero "0".

Soils data provided by USDA and NRCS. Soils data provided by University of Illinois at Champaign-Urbana.

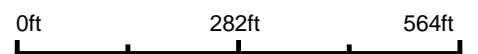
*c: Using Capabilities Class Dominant Condition Aggregation Method

Topography Map



©2016 AgriData, Inc.

map center: 38° 4' 20.6, -89° 9' 25.47



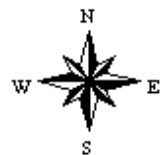
Maps Provided By:



© AgriData, Inc. 2016

www.AgriDataInc.com

24-5S-1W
Perry County
Illinois



9/6/2016