



Common Land Unit

- CRP
- Non-Cropland
- Cropland
- Tract Boundary

0 285 570 1,140
 Feet

2018 Program Year
 Map Created October 06, 2017

Wetland Determination

- Restricted Use
- Limited
- Exempt from Conservation Compliance Provisions

NAIP Imagery 2017

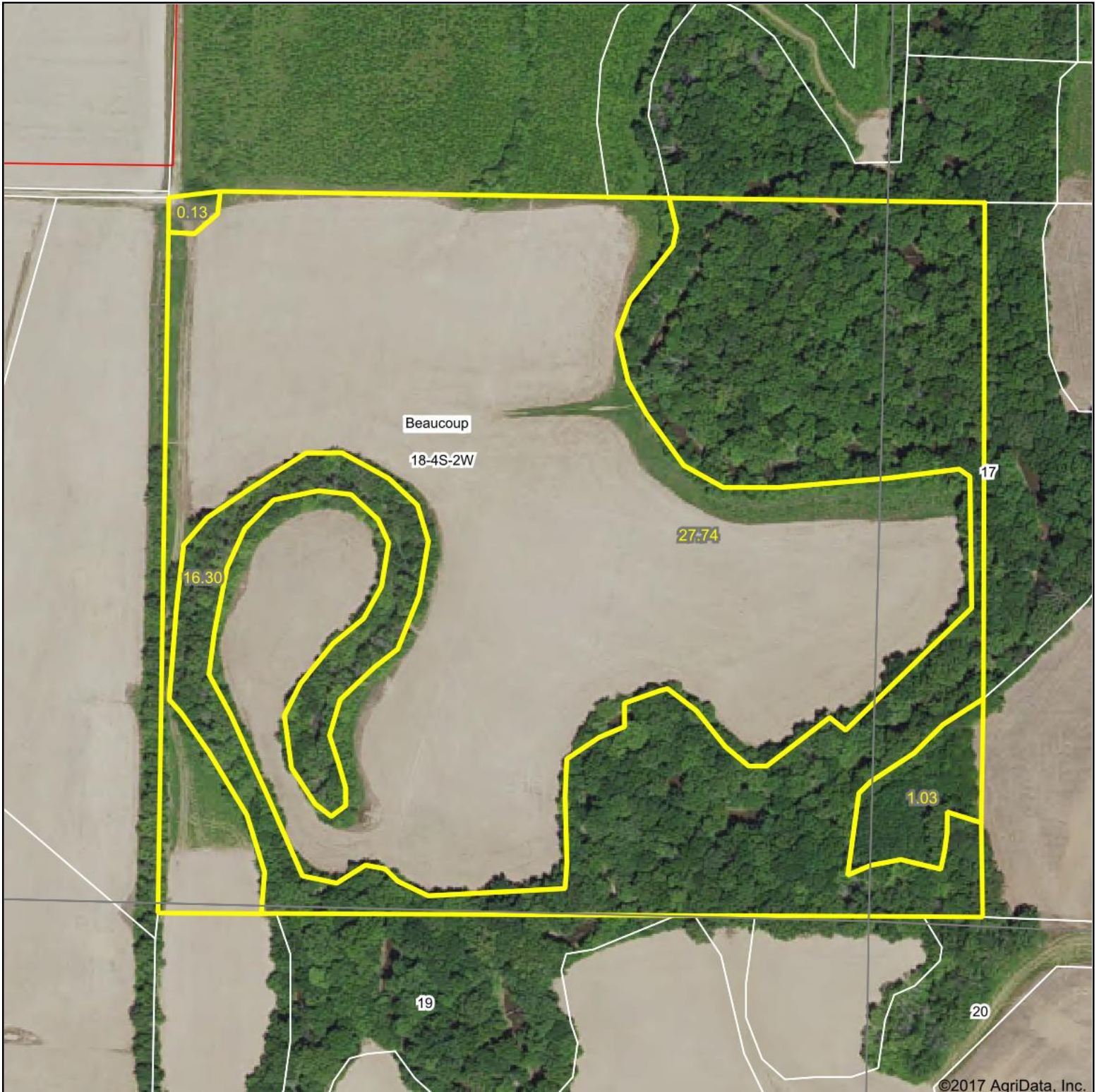
Farm 3366
Tract 560

Tract Cropland Total: 26.90 acres

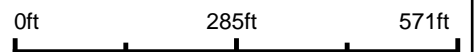
IL145_T560

United States Department of Agriculture (USDA) Farm Service Agency (FSA) maps are for FSA Program administration only. This map does not represent a legal survey or reflect actual ownership; rather it depicts the information provided directly from the producer and/or National Agricultural Imagery Program (NAIP) imagery. The producer accepts the data 'as is' and assumes all risks associated with its use. USDA-FSA assumes no responsibility for actual or consequential damage incurred as a result of any user's reliance on this data outside FSA Programs. Wetland identifiers do not represent the size, shape, or specific determination of the area. Refer to your original determination (CPA-026 and attached maps) for exact boundaries and determinations or contact USDA Natural Resources Conservation Service (NRCS).

Aerial Map



map center: 38° 10' 23.34, -89° 21' 15.93



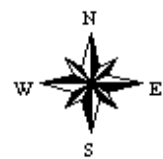
Maps Provided By:



© AgriData, Inc. 2017

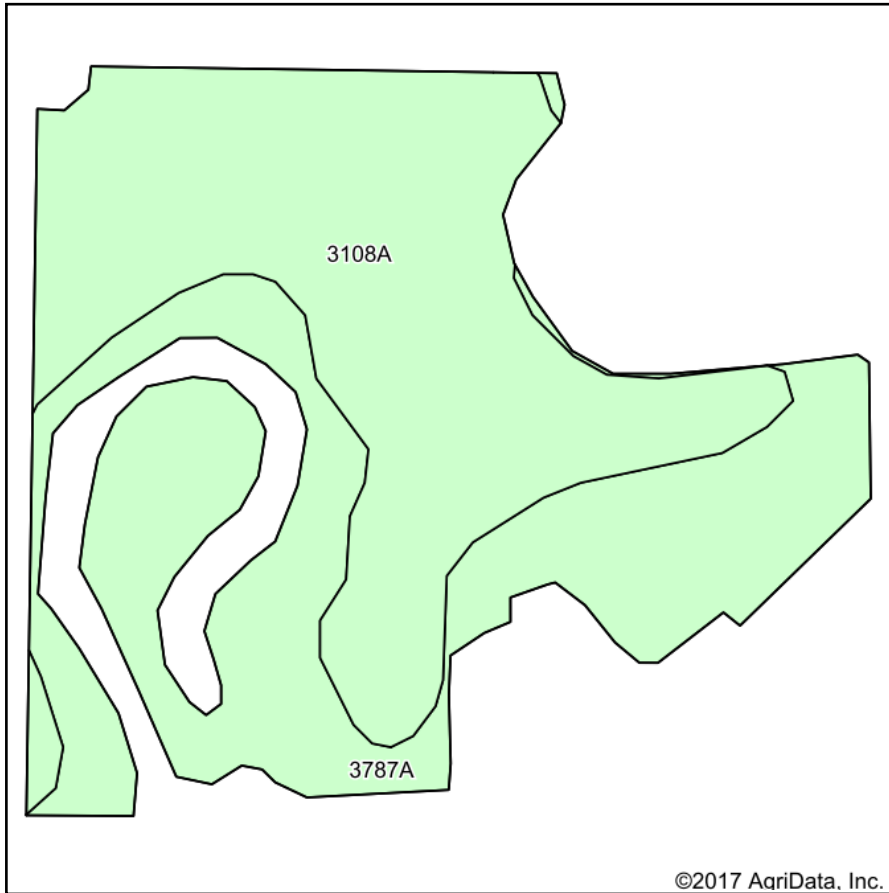
www.AgriDataInc.com

18-4S-2W
Perry County
Illinois

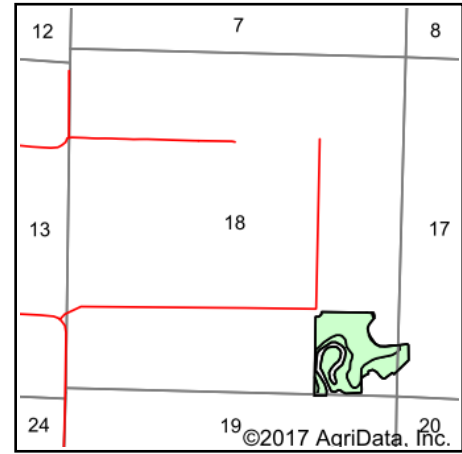


1/26/2018

Soils Map



Soils data provided by USDA and NRCS.



State: **Illinois**
 County: **Perry**
 Location: **17-4S-2W**
 Township: **Beaucoup**
 Acres: **27.74**
 Date: **1/26/2018**



Area Symbol: IL145, Soil Area Version: 14

Code	Soil Description	Acres	Percent of field	Il. State Productivity Index Legend	Corn Bu/A	Soybeans Bu/A	Wheat Bu/A	Crop productivity index for optimum management
3108A	Bonnie silt loam, 0 to 2 percent slopes, frequently flooded	15.05	54.3%		149	49	59	111
3787A	Banic silt loam, 0 to 2 percent slopes, frequently flooded	12.69	45.7%		142	47	56	106
Weighted Average					145.8	48.1	57.6	108.7

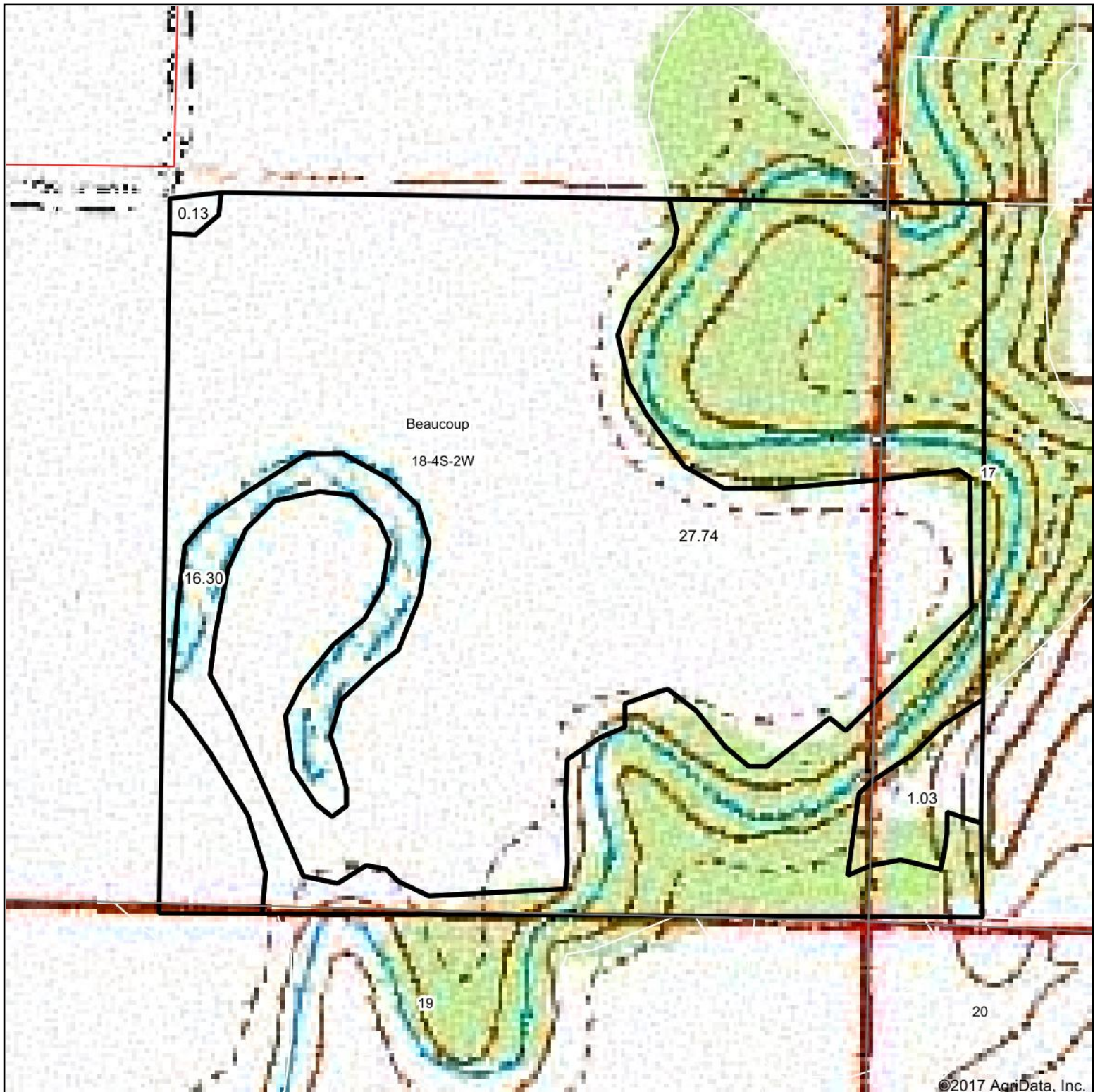
Table: Optimum Crop Productivity Ratings for Illinois Soil by K.R. Olson and J.M. Lang, Office of Research, ACES, University of Illinois at Champaign-Urbana. Version: 1/2/2012 Amended Table S2 B811

Crop yields and productivity indices for optimum management (B811) are maintained at the following NRES web site: <http://soilproductivity.nres.illinois.edu/>

** Indexes adjusted for slope and erosion according to Bulletin 811 Table S3

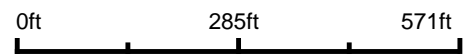
Soils data provided by USDA and NRCS. Soils data provided by University of Illinois at Champaign-Urbana.

Topography Map



©2017 AgriData, Inc.

map center: 38° 10' 23.34, -89° 21' 15.93



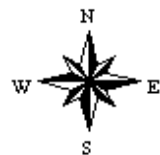
Maps Provided By:



© AgriData, Inc. 2017

www.AgriDataInc.com

18-4S-2W
Perry County
Illinois



1/26/2018