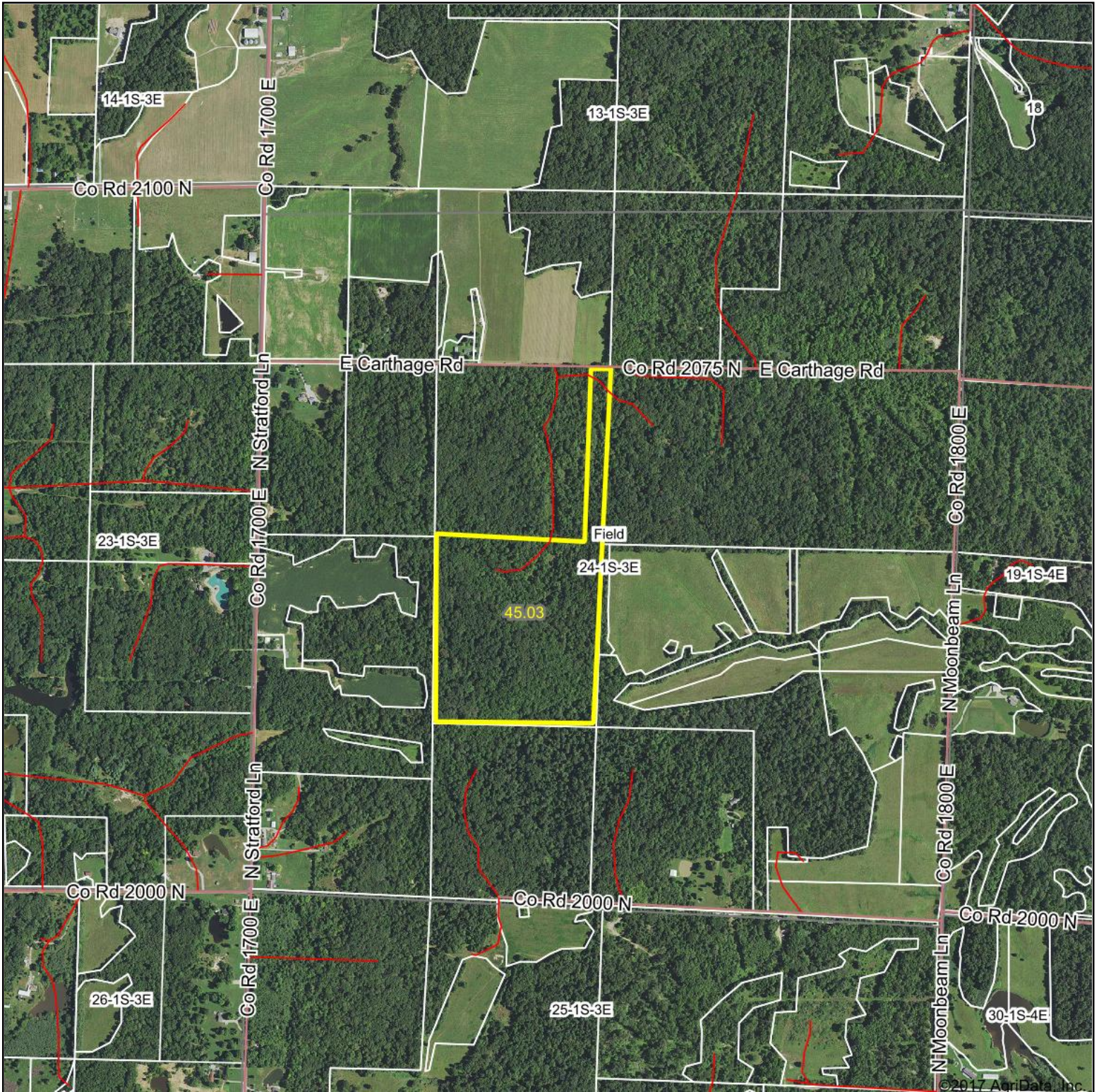


# Aerial Map



map center: 38° 25' 30.04, -88° 49' 20.11

0ft 1201ft 2402ft



Maps Provided By:



© AgriData, Inc. 2017

www.AgriDataInc.com

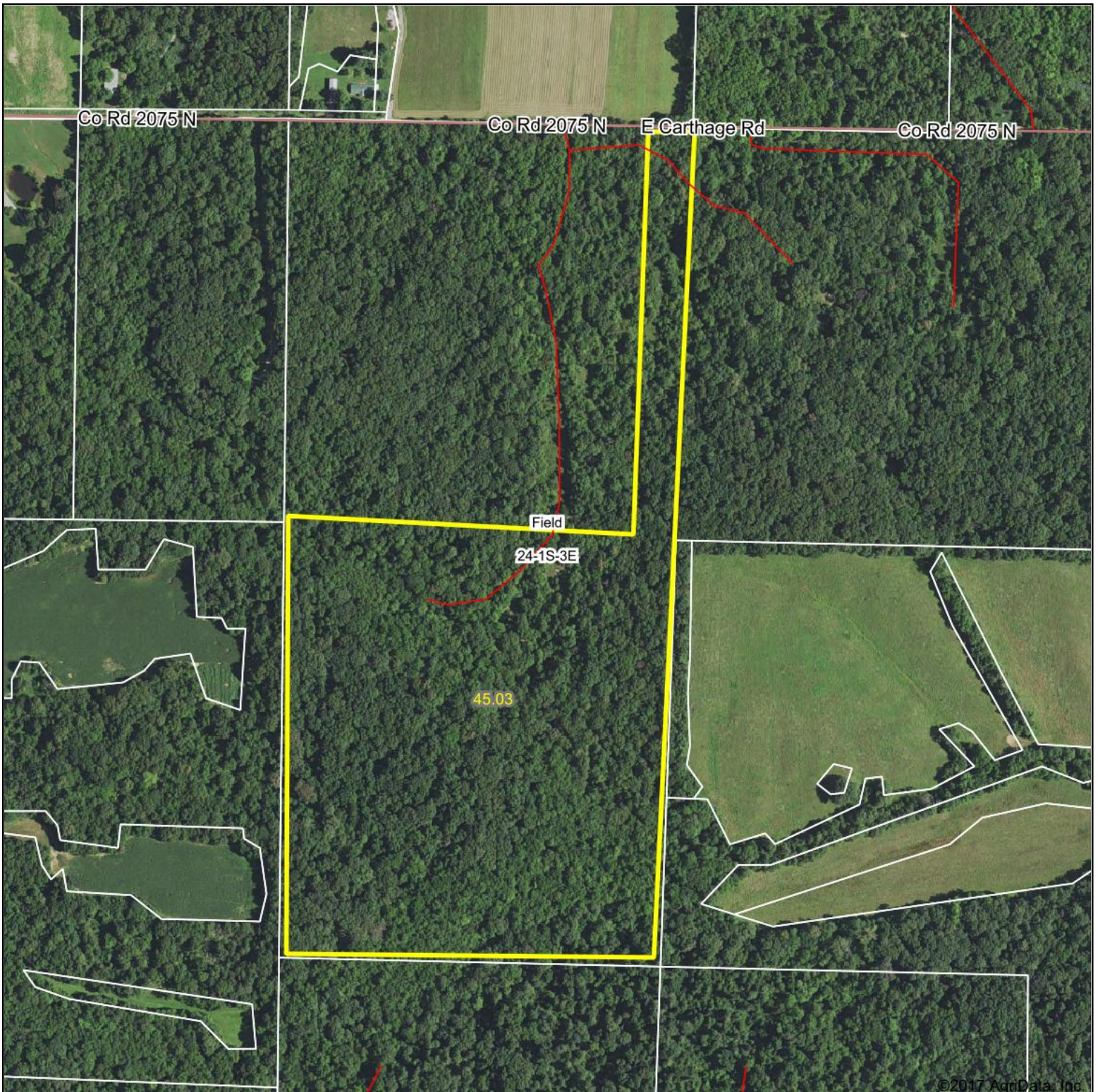
**24-1S-3E**  
**Jefferson County**  
**Illinois**



12/24/2017



# Aerial Map



map center: 38° 25' 30.04, -88° 49' 20.12

0ft 515ft 1030ft



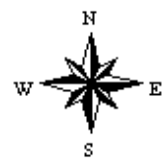
Maps Provided By:



© AgriData, Inc. 2017

www.AgriDataInc.com

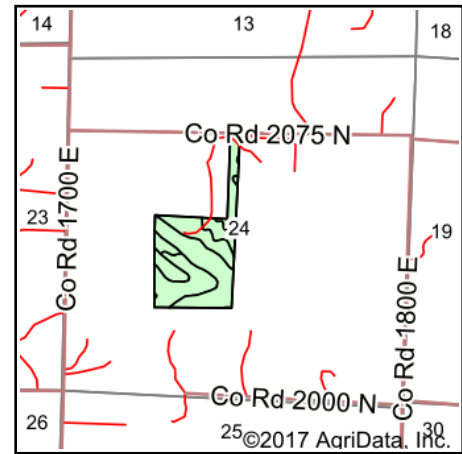
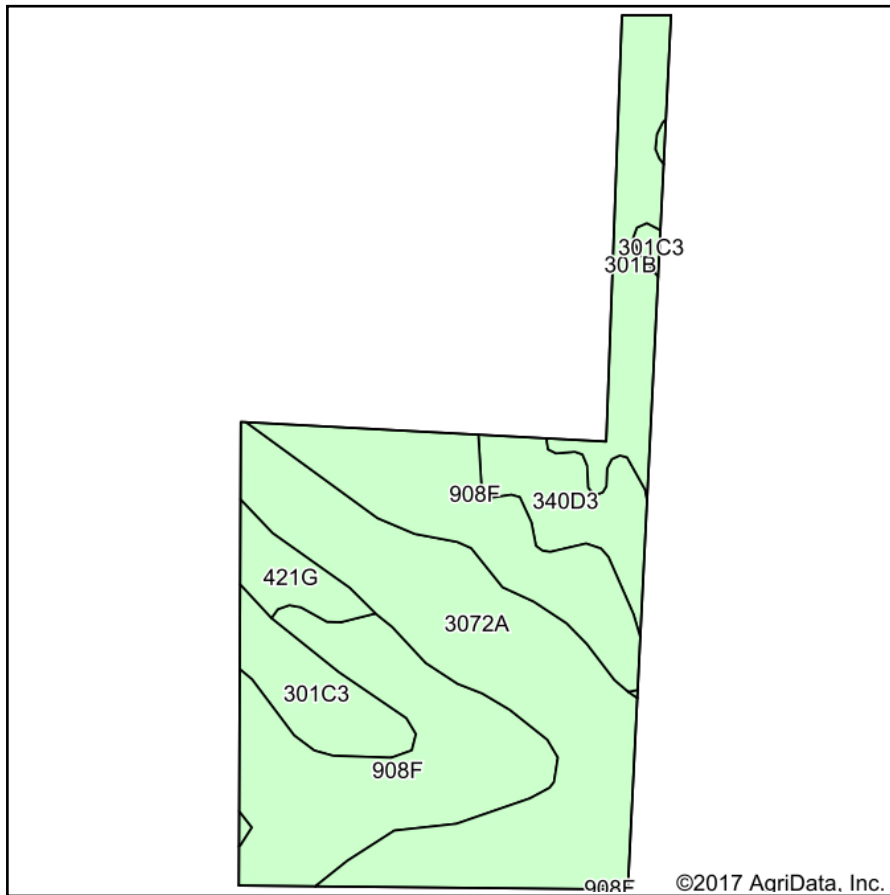
**24-1S-3E**  
**Jefferson County**  
**Illinois**



12/24/2017



# Soils Map



State: **Illinois**  
 County: **Jefferson**  
 Location: **24-1S-3E**  
 Township: **Field**  
 Acres: **45.03**  
 Date: **12/24/2017**



Maps Provided By:  
**surety**  
 CUSTOMIZED ONLINE MAPPING  
 © AgriData, Inc. 2017 www.AgriDataInc.com



## Area Symbol: IL081, Soil Area Version: 10

Code	Soil Description	Acres	Percent of field	Il. State Productivity Index Legend	Corn Bu/A	Soybeans Bu/A	Wheat Bu/A	Grass-legume hay, T/A	Crop productivity index for optimum management
**908F	Hickory-Kell silt loams, 18 to 35 percent slopes	17.12	38.0%		**87	**29	**34	**2.81	**67
3072A	Sharon silt loam, 0 to 2 percent slopes, frequently flooded	14.93	33.2%		164	53	63	0.00	122
**301B	Grantsburg silt loam, 2 to 5 percent slopes	4.75	10.5%		**133	**46	**54	0.00	**101
**301C3	Grantsburg silty clay loam, 5 to 10 percent slopes, severely eroded	3.30	7.3%		**99	**34	**41	0.00	**75
**340D3	Zanesville silt loam, till plain, 10 to 18 percent slopes, severely eroded	3.29	7.3%		**86	**30	**37	**2.68	**65
**421G	Kell silt loam, 35 to 60 percent slopes	1.64	3.6%		**60	**20	**23	**1.87	**45
<b>Weighted Average</b>					<b>117.2</b>	<b>38.9</b>	<b>46.1</b>	<b>1.33</b>	<b>88.5</b>

**Table: Optimum Crop Productivity Ratings for Illinois Soil by K.R. Olson and J.M. Lang, Office of Research, ACES, University of Illinois at Champaign-Urbana.** Version: 1/2/2012 Amended Table S2 B811

Crop yields and productivity indices for optimum management (B811) are maintained at the following NRES web site:

<https://www.ideals.illinois.edu/handle/2142/1027/>

\*\* Indexes adjusted for slope and erosion according to Bulletin 811 Table S3

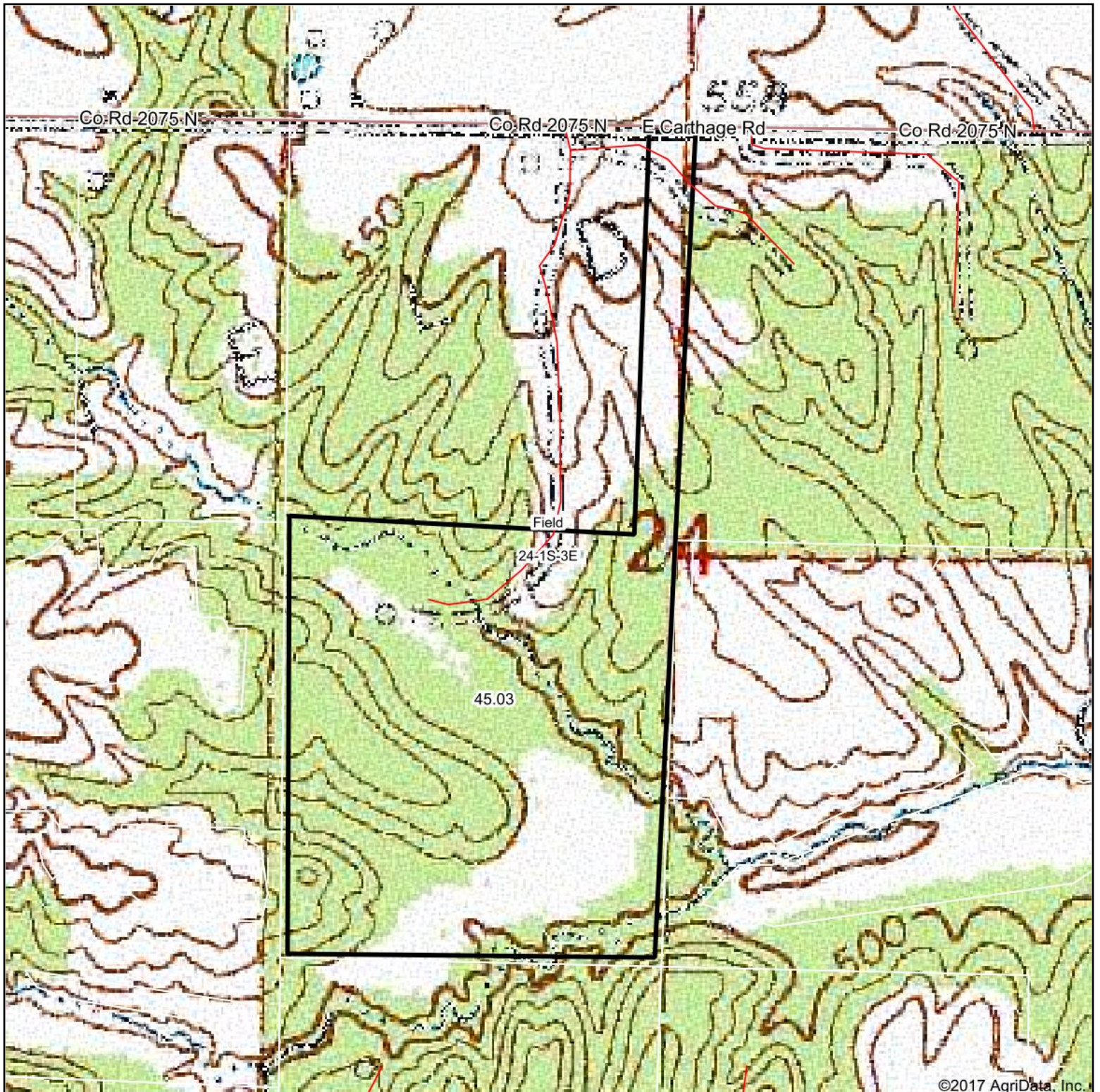
e Soils in the well drained group were not rated for grass-legume and are shown with a zero "0".

Soils data provided by USDA and NRCS. Soils data provided by University of Illinois at Champaign-Urbana.

\*c: Using Capabilities Class Dominant Condition Aggregation Method



# Topography Map



©2017 AgriData, Inc.

map center: 38° 25' 30.04, -88° 49' 20.12

0ft 515ft 1030ft



Maps Provided By:



© AgriData, Inc. 2017

www.AgriDataInc.com

**24-1S-3E**  
**Jefferson County**  
**Illinois**



12/24/2017