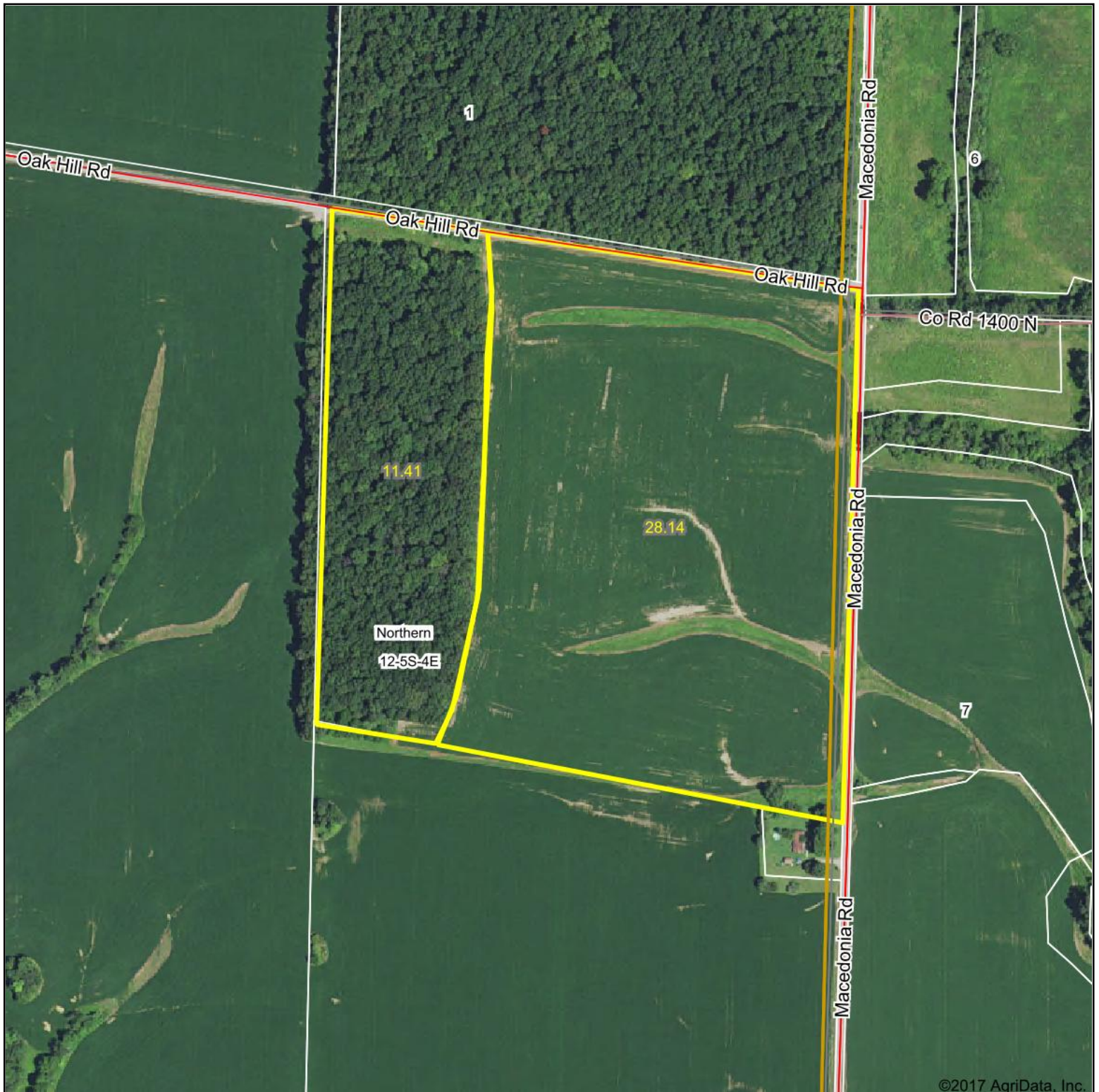


Aerial Map



map center: 38° 6' 31.97, -88° 42' 27.19

0ft 387ft 774ft



Maps Provided By:



© AgriData, Inc. 2017

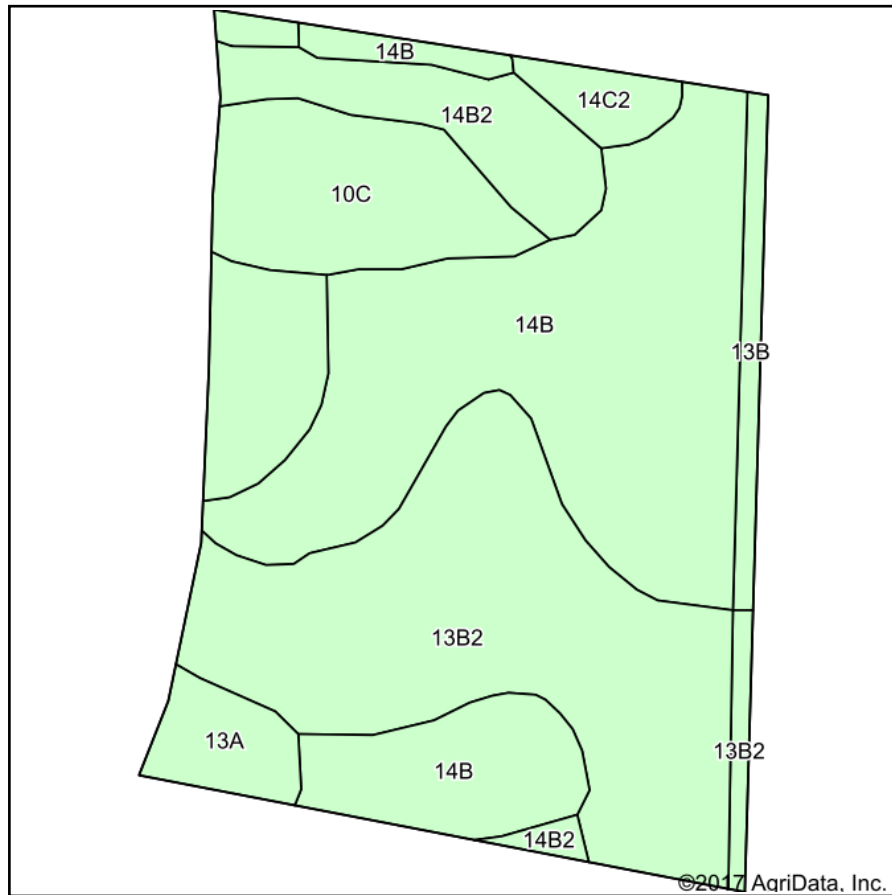
www.AgriDataInc.com

12-5S-4E
Franklin County
Illinois

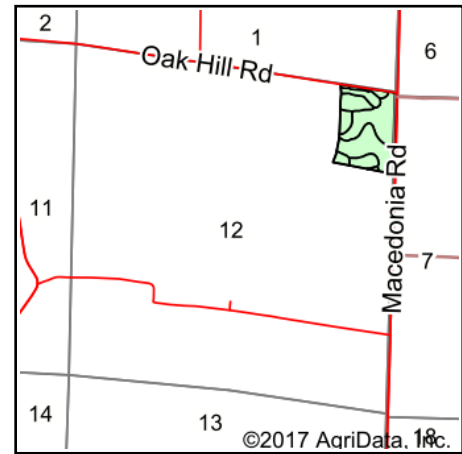


12/7/2017

Soils Map



Soils data provided by USDA and NRCS.



State: **Illinois**
 County: **Franklin**
 Location: **12-5S-4E**
 Township: **Northern**
 Acres: **28.14**
 Date: **12/7/2017**



Maps Provided By:



© AgriData, Inc. 2017

www.AgriDataInc.com



Area Symbol: IL055, Soil Area Version: 11

Area Symbol: IL065, Soil Area Version: 12

| Code | Soil Description | Acres | Percent of field | Il. State Productivity Index Legend | Corn Bu/A | Soybeans Bu/A | Wheat Bu/A | Crop productivity index for optimum management |
|------------------|---|-------|------------------|-------------------------------------|-----------|---------------|------------|--|
| **14B | Ava silt loam, 2 to 5 percent slopes | 11.07 | 39.3% | | **134 | **44 | **54 | **99 |
| **13B2 | Bluford silt loam, 2 to 5 percent slopes, eroded | 8.09 | 28.7% | | **129 | **42 | **52 | **96 |
| **14B2 | Ava silt loam, 2 to 5 percent slopes, eroded | 3.57 | 12.7% | | **126 | **41 | **51 | **93 |
| **10C | Plumfield silty clay loam, 5 to 10 percent slopes | 2.76 | 9.8% | | **103 | **34 | **39 | **78 |
| 13A | Bluford silt loam, 0 to 2 percent slopes | 1.06 | 3.8% | | 136 | 44 | 55 | 101 |
| **13B | Bluford silt loam, 2 to 5 percent slopes | 0.68 | 2.4% | | **135 | **44 | **54 | **100 |
| **14C2 | Ava silt loam, 5 to 10 percent slopes, eroded | 0.58 | 2.1% | | **122 | **40 | **50 | **90 |
| **13B2 | Bluford silt loam, 2 to 5 percent slopes, eroded | 0.33 | 1.2% | | **129 | **42 | **52 | **96 |
| Weighted Average | | | | | 128.3 | 42 | 51.5 | 95.2 |

Table: Optimum Crop Productivity Ratings for Illinois Soil by K.R. Olson and J.M. Lang, Office of Research, ACES, University of Illinois at Champaign-Urbana. Version: 1/2/2012 Amended Table S2 B811

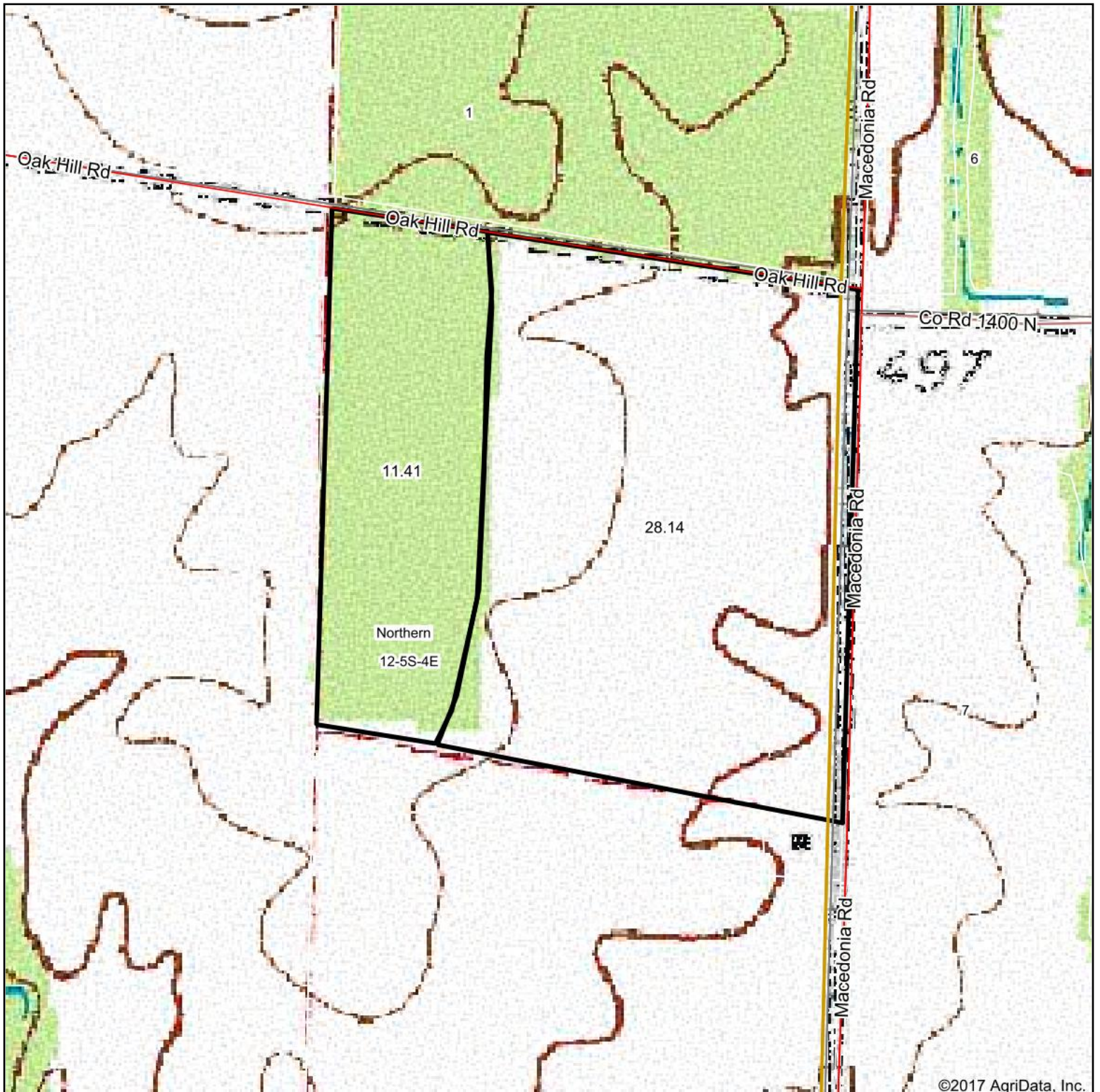
Crop yields and productivity indices for optimum management (B811) are maintained at the following NRES web site:

<https://www.ideals.illinois.edu/handle/2142/1027/>

** Indexes adjusted for slope and erosion according to Bulletin 811 Table S3

Soils data provided by USDA and NRCS. Soils data provided by University of Illinois at Champaign-Urbana.

Topography Map



map center: 38° 6' 31.97, -88° 42' 27.19

0ft 387ft 774ft



Maps Provided By:



© AgriData, Inc. 2017

www.AgriDataInc.com

12-5S-4E
Franklin County
Illinois



12/7/2017