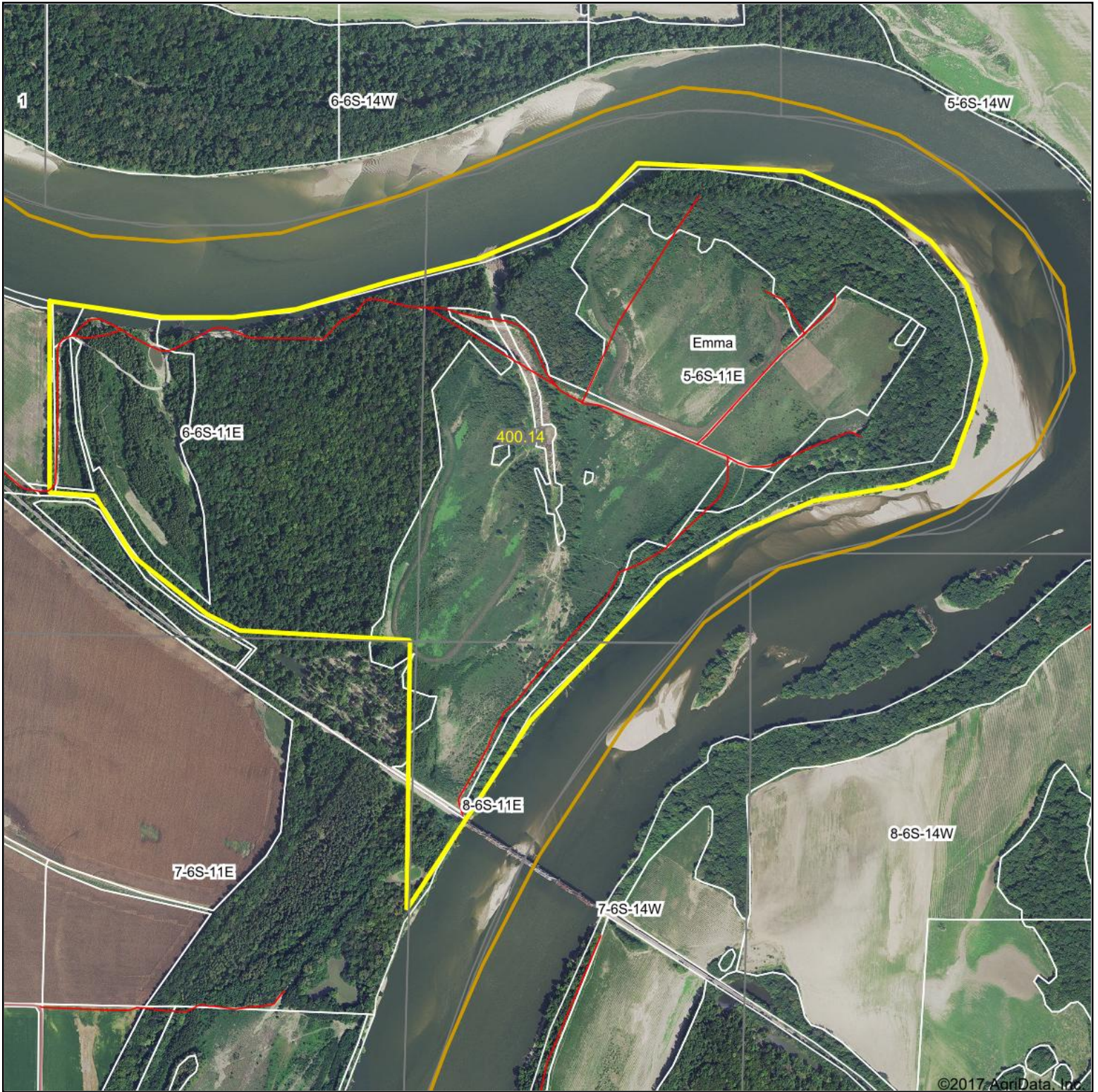


Aerial Map



map center: 38° 1' 31.87, -88° 1' 15.3

0ft 1132ft 2264ft



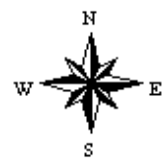
Maps Provided By:



© AgriData, Inc. 2017

www.AgriDataInc.com

5-6S-11E
White County
Illinois



12/14/2017

Aerial Map



map center: 38° 1' 31.87, -88° 1' 15.3

0ft 1132ft 2264ft



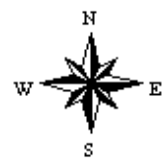
Maps Provided By:



© AgriData, Inc. 2017

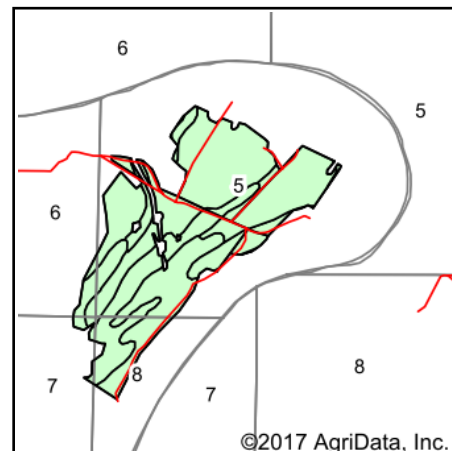
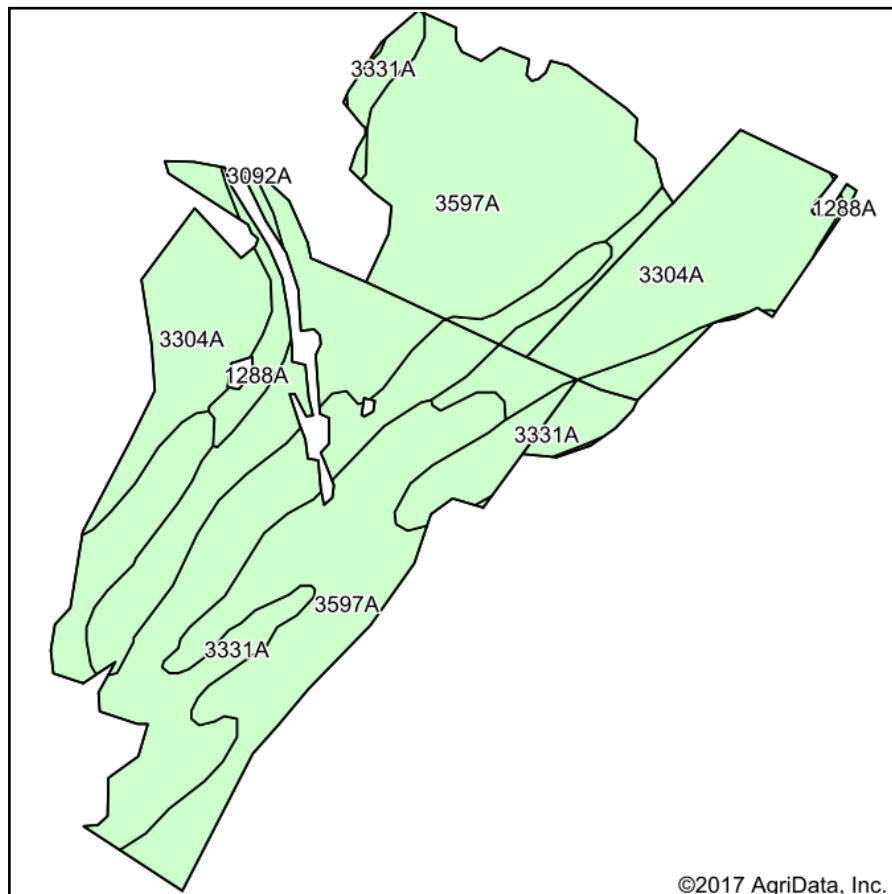
www.AgriDataInc.com

5-6S-11E
White County
Illinois



12/14/2017

Soils Map



State: **Illinois**
 County: **White**
 Location: **5-6S-11E**
 Township: **Emma**
 Acres: **164.15**
 Date: **12/14/2017**



Maps Provided By:



© AgriData, Inc. 2017

www.AgriDataInc.com



Area Symbol: IL193, Soil Area Version: 12

Code	Soil Description	Acres	Percent of field	Il. State Productivity Index Legend	Corn Bu/A	Soybeans Bu/A	Wheat Bu/A	Crop productivity index for optimum management
3597A	Armiesburg silty clay loam, 0 to 2 percent slopes, frequently flooded	77.43	47.2%		177	57	69	132
3331A	Haymond silt loam, 0 to 3 percent slopes, frequently flooded	44.63	27.2%		181	56	70	132
3304A	Landes fine sandy loam, 0 to 2 percent slopes, frequently flooded	38.41	23.4%		135	45	55	100
1288A	Petrolia silty clay loam, undrained, 0 to 2 percent slopes, frequently flooded	3.68	2.2%		162	49	61	117
Weighted Average					167.9	53.7	65.8	124.2

Table: Optimum Crop Productivity Ratings for Illinois Soil by K.R. Olson and J.M. Lang, Office of Research, ACES, University of Illinois at Champaign-Urbana. Version: 1/2/2012 Amended Table S2 B811

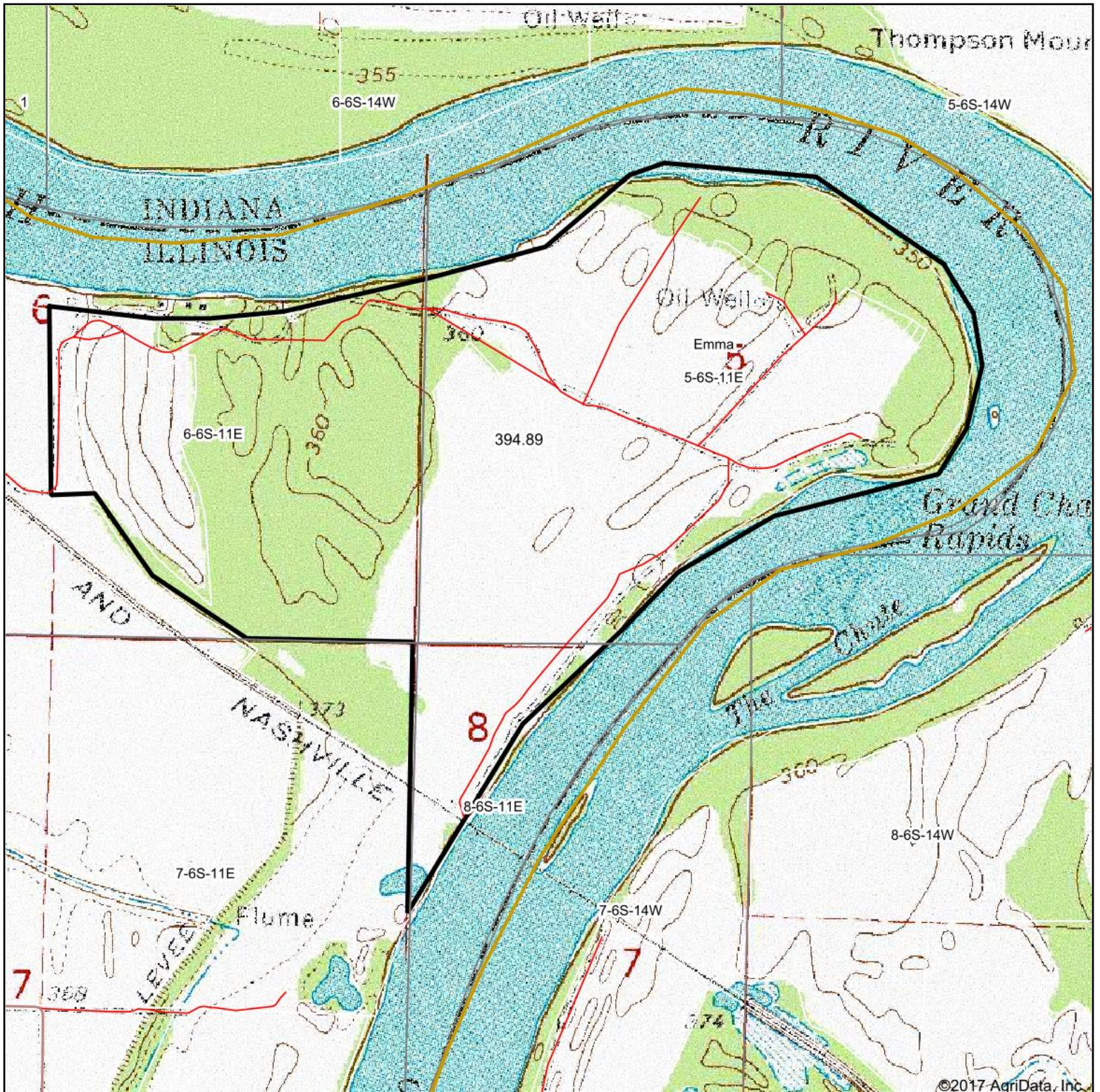
Crop yields and productivity indices for optimum management (B811) are maintained at the following NRES web site:

<https://www.ideals.illinois.edu/handle/2142/1027/>

** Indexes adjusted for slope and erosion according to Bulletin 811 Table S3

Soils data provided by USDA and NRCS. Soils data provided by University of Illinois at Champaign-Urbana.

Topography Map



map center: 38° 1' 31.87, -88° 1' 15.3

0ft 1132ft 2264ft



Maps Provided By:



© AgriData, Inc. 2017

www.AgriDataInc.com

5-6S-11E
White County
Illinois



12/14/2017