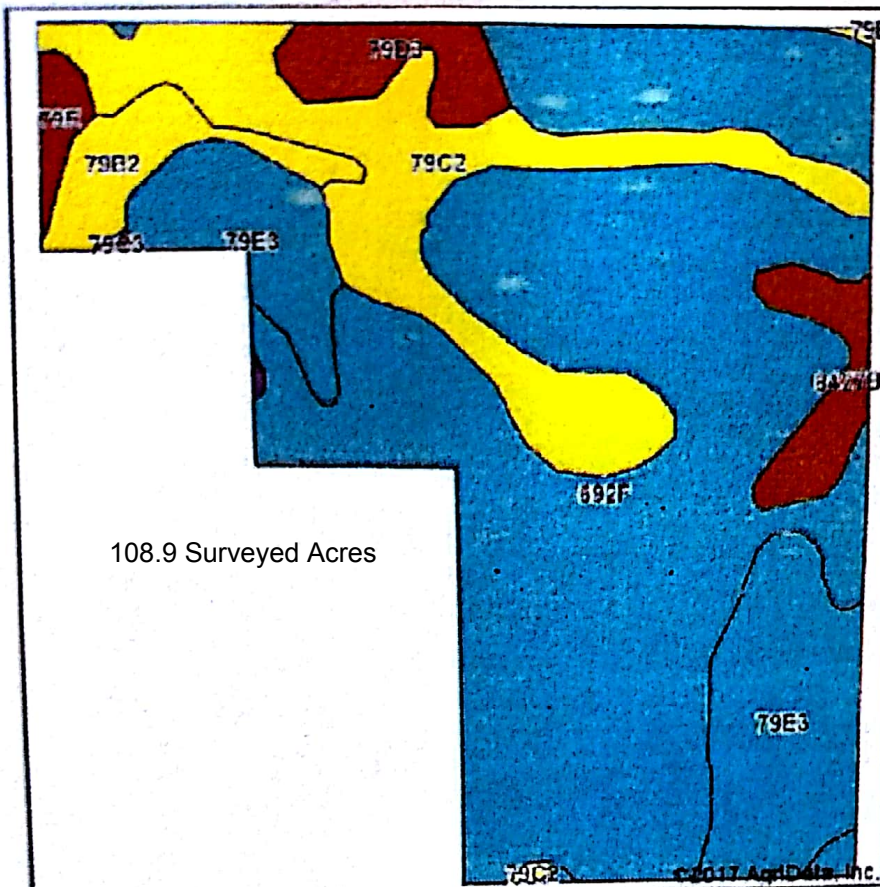
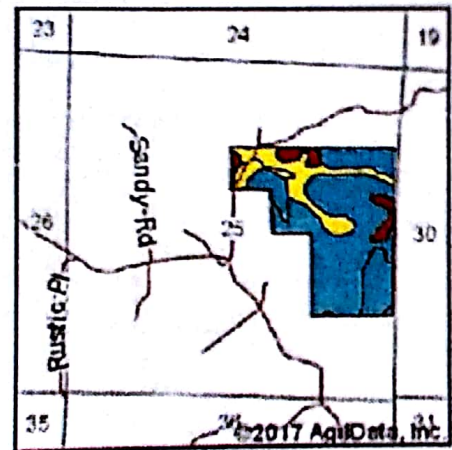


Soils Map



108.9 Surveyed Acres



State: Illinois
 County: Jackson
 Location: 25-10S-3W
 Township: Pomona
 Acres: 108.9 Surveyed Ac.'s
 Date: 8/21/2017



Soils data provided by USDA and NRCS.

Area Symbol: IL077, Soil Area Version: 16

Code	Soil Description	Acres	Percent of field	IL State Productivity Index Legend	Subsoil rooting #	Corn Bu/A	Soybeans Bu/A	Wheat Bu/A	Oats Bu/A ^b	Sorghum ^c Bu/A	Alfalfa ^d hay, T/A	Grass-legume ^e hay, T/A	Crop productivity index for optimum management
**892F	Mentro-Wellston silt loams, 18 to 35 percent slopes	65.22	58.3%		FAV	**104	**33	**40	0	**77	**3.12	0.00	**76
**79C2	Mentro silt loam, 5 to 10 percent slopes, eroded	17.85	16.0%		FAV	**153	**47	**59	0	**113	**4.55	0.00	**112
**79E3	Mentro silt loam, 18 to 25 percent slopes, severely eroded	16.50	14.8%		FAV	**112	**35	**43	0	**83	**3.33	0.00	**82
**79B2	Mentro silt loam, 2 to 5 percent slopes, eroded	3.81	3.4%		FAV	**157	**48	**60	0	**116	**4.65	0.00	**114
**79D3	Mentro silt loam, 10 to 18 percent slopes, severely eroded	3.81	3.2%		FAV	**134	**41	**51	0	**99	**3.96	0.00	**97
8427B	Burnside silt loam, 1 to 4 percent slopes, occasionally flooded	3.39	3.0%		FAV	120	43	51	60	0	3.14	0.00	96
**79E	Mentro silt loam, 18 to 25 percent slopes	1.25	1.1%		FAV	**132	**41	**50	0	**98	**3.91	0.00	**86
**79C3	Mentro silt loam, 6 to 10 percent slopes, severely eroded	0.21	0.2%		FAV	**142	**44	**54	0	**105	**4.21	0.00	**103
Weighted Average						116.9	36.7	45	1.8	83.6	3.47	0.00	85.5

Table: Optimum Crop Productivity Ratings for Illinois Soil by K.R. Olson and J.M. Lang, Office of Research, ACES, University of Illinois at Champaign-Urbana, Version: 1/2/2012 Amended Table S2 B811

Crop yields and productivity indices for optimum management (B811) are maintained at the following NRES web site: <https://www.plants.illinois.edu/awd/2142/1027/>

** Indexes adjusted for slope and erosion according to Bulletin 811 Table S3

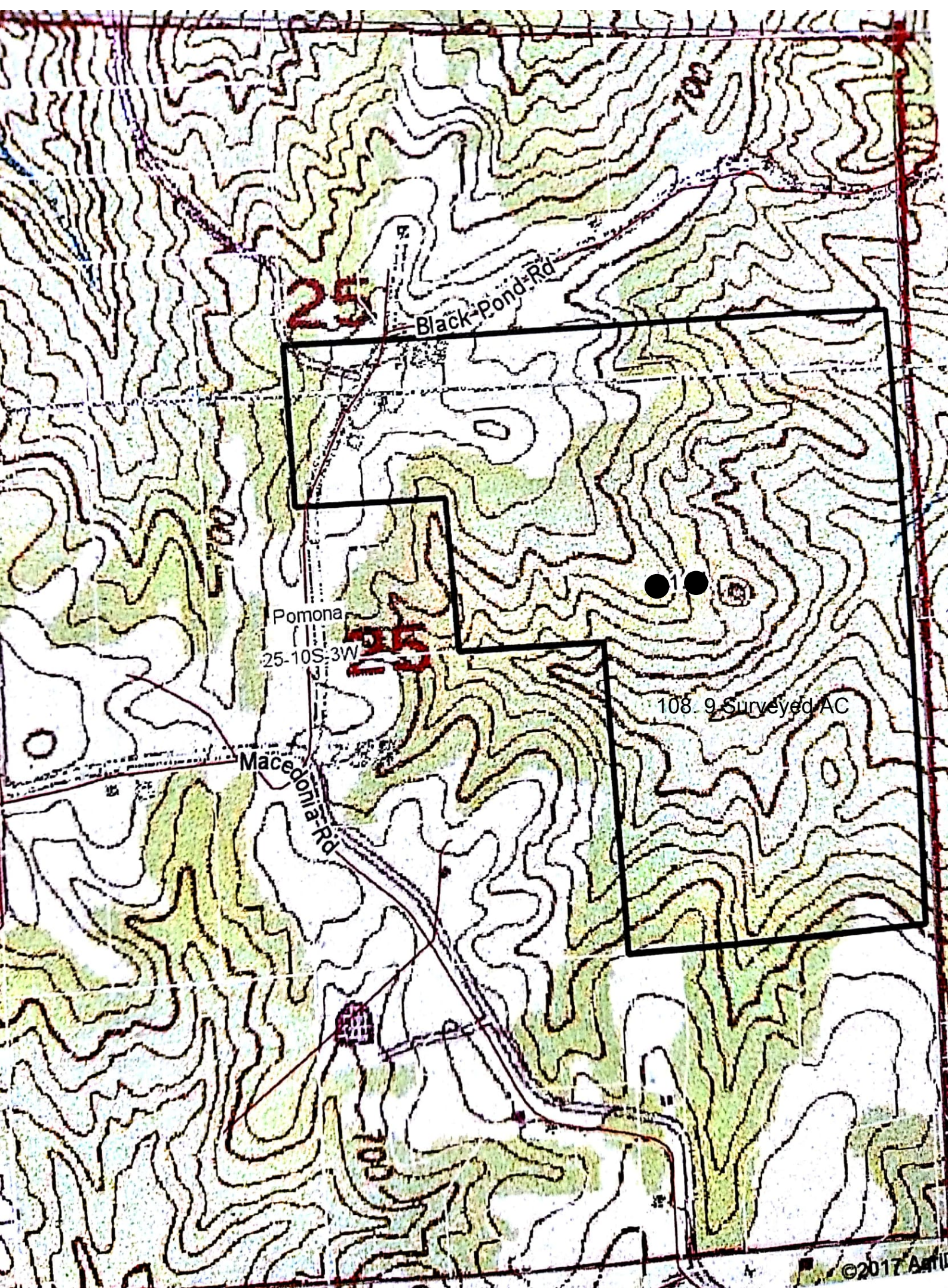
^a UNF = unfavorable; FAV = favorable

^b Soils in the southern region were not rated for oats and are shown with a zero "0".

^c Soils in the northern region or in both regions were not rated for grain sorghum and are shown with a zero "0".

^d Soils in the poorly drained group were not rated for alfalfa and are shown with a zero "0".

^e Soils in the well drained group were not rated for grass-legume and are shown with a zero "0".



25

Black-pond-Rd

Pomona
25-10S-3W

35

Macedonia-Rd

108.9 Surveyed AC

©2017 Aerial