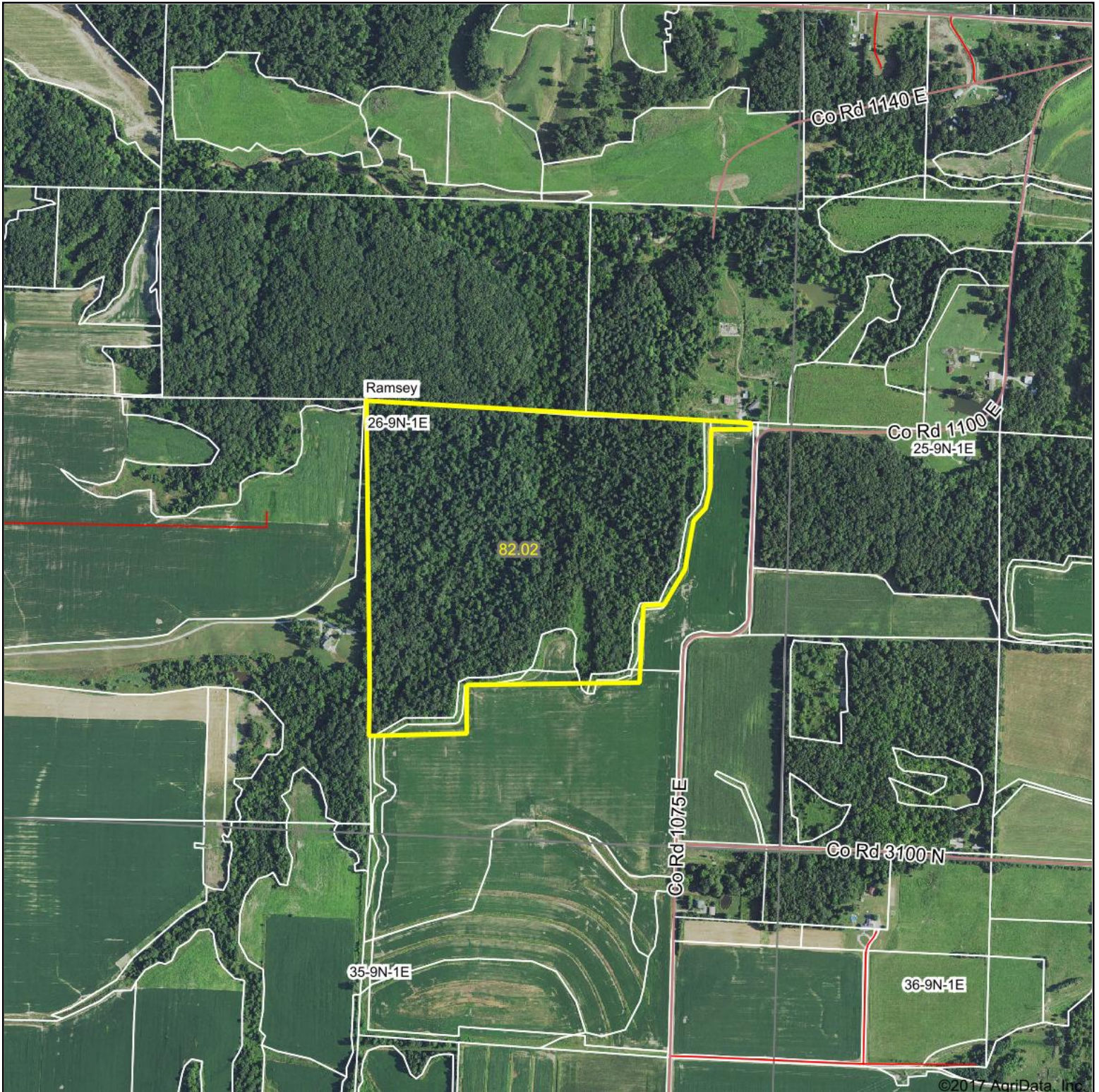


Aerial Map



©2017 AgriData, Inc.



map center: 39° 11' 31, -89° 3' 0.28

0ft 974ft 1949ft

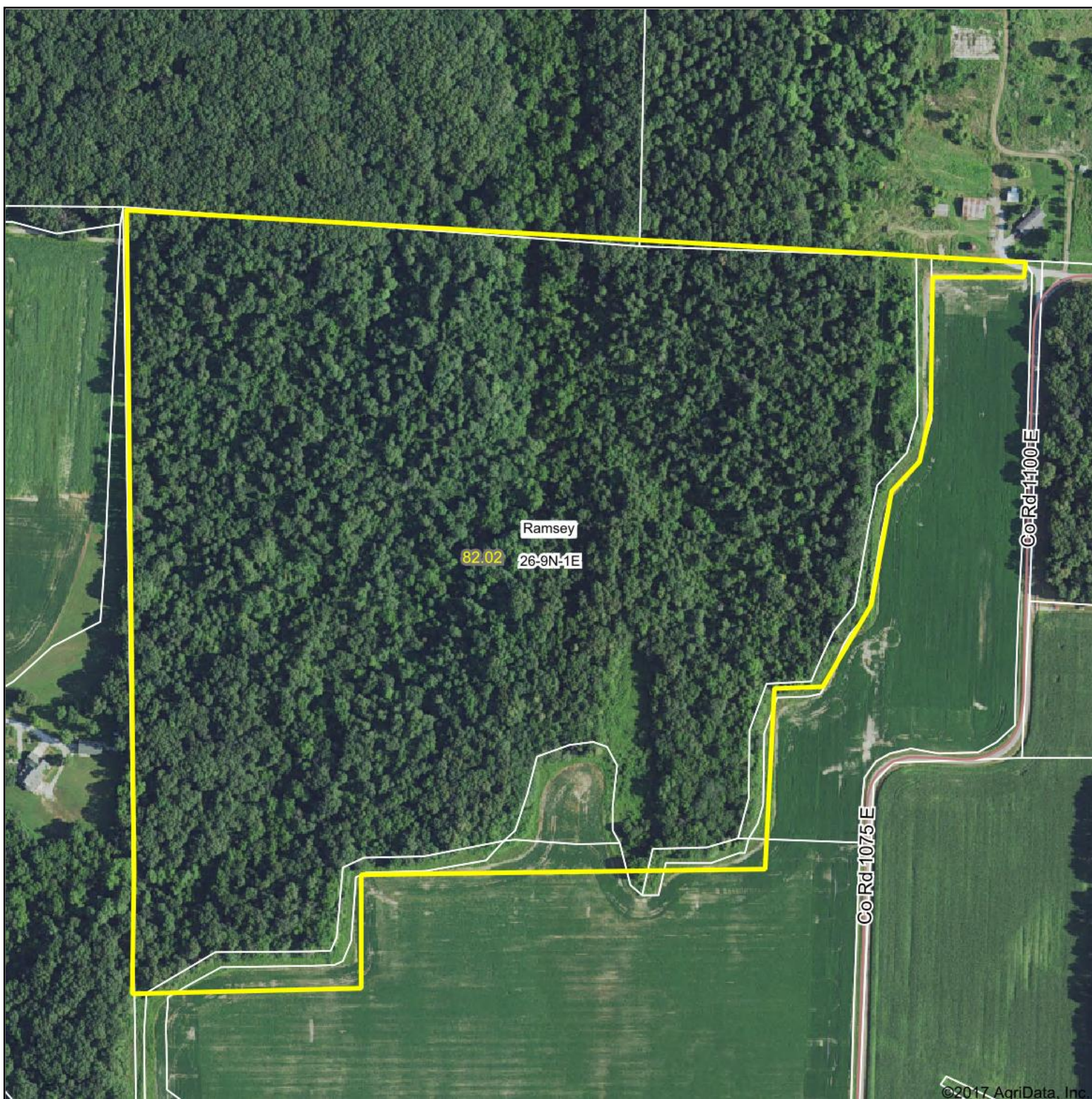
Maps Provided By:
 **surety**
CUSTOMIZED ONLINE MAPPING
© AgriData, Inc. 2017 www.AgriDataInc.com

26-9N-1E
Fayette County
Illinois



10/5/2017

Aerial Map



map center: 39° 11' 31.01, -89° 3' 0.29

0ft 420ft 840ft



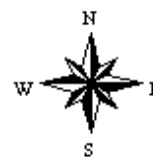
Maps Provided By:



© AgriData, Inc. 2017

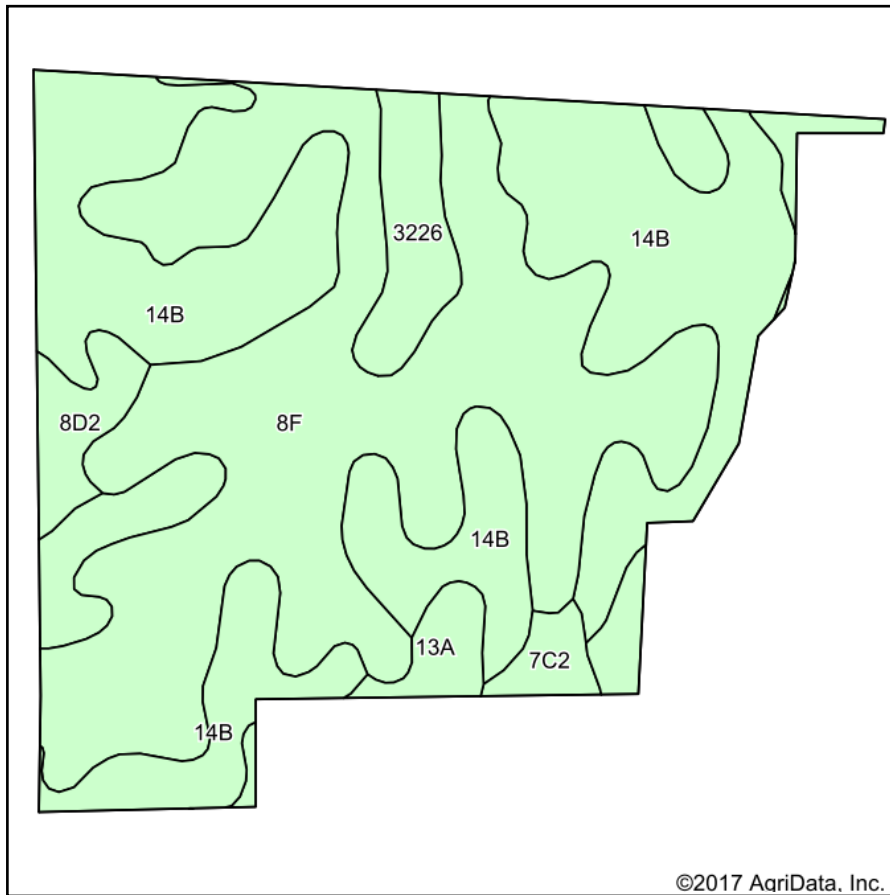
www.AgriDataInc.com

26-9N-1E
Fayette County
Illinois

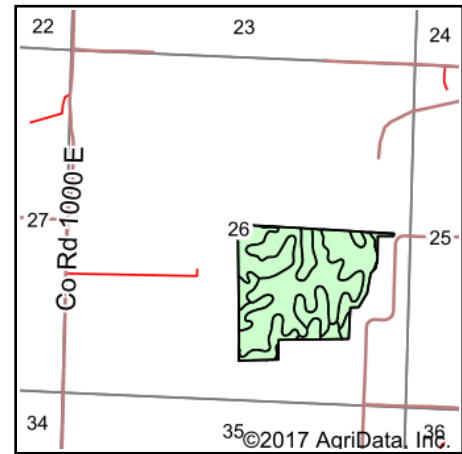


10/5/2017

Soils Map



Soils data provided by USDA and NRCS.



State: **Illinois**
 County: **Fayette**
 Location: **26-9N-1E**
 Township: **Ramsey**
 Acres: **82.02**
 Date: **10/5/2017**



Maps Provided By:



© AgriData, Inc. 2017

www.AgriDataInc.com



Area Symbol: IL051, Soil Area Version: 12

Code	Soil Description	Acres	Percent of field	Il. State Productivity Index Legend	Corn Bu/A	Soybeans Bu/A	Wheat Bu/A	Grass-legume e hay, T/A	Crop productivity index for optimum management
**8F	Hickory silt loam, 18 to 35 percent slopes	36.84	44.9%		**86	**29	**35	0.00	**65
**14B	Ava silt loam, 2 to 5 percent slopes	35.13	42.8%		**134	**44	**54	0.00	**99
13A	Bluford silt loam, 0 to 2 percent slopes	3.35	4.1%		136	44	55	3.39	101
3226	Wirt silt loam, frequently flooded	3.30	4.0%		146	47	55	0.00	106
**8D2	Hickory silt loam, 10 to 18 percent slopes, eroded	2.20	2.7%		**108	**36	**44	0.00	**82
**7C2	Atlas silt loam, 5 to 10 percent slopes, eroded	1.20	1.5%		**105	**37	**41	**3.16	**81
Weighted Average					111.9	37.1	45.1	0.18	83.4

Table: Optimum Crop Productivity Ratings for Illinois Soil by K.R. Olson and J.M. Lang, Office of Research, ACES, University of Illinois at Champaign-Urbana. Version: 1/2/2012 Amended Table S2 B811

Crop yields and productivity indices for optimum management (B811) are maintained at the following NRES web site:

<https://www.ideals.illinois.edu/handle/2142/1027/>

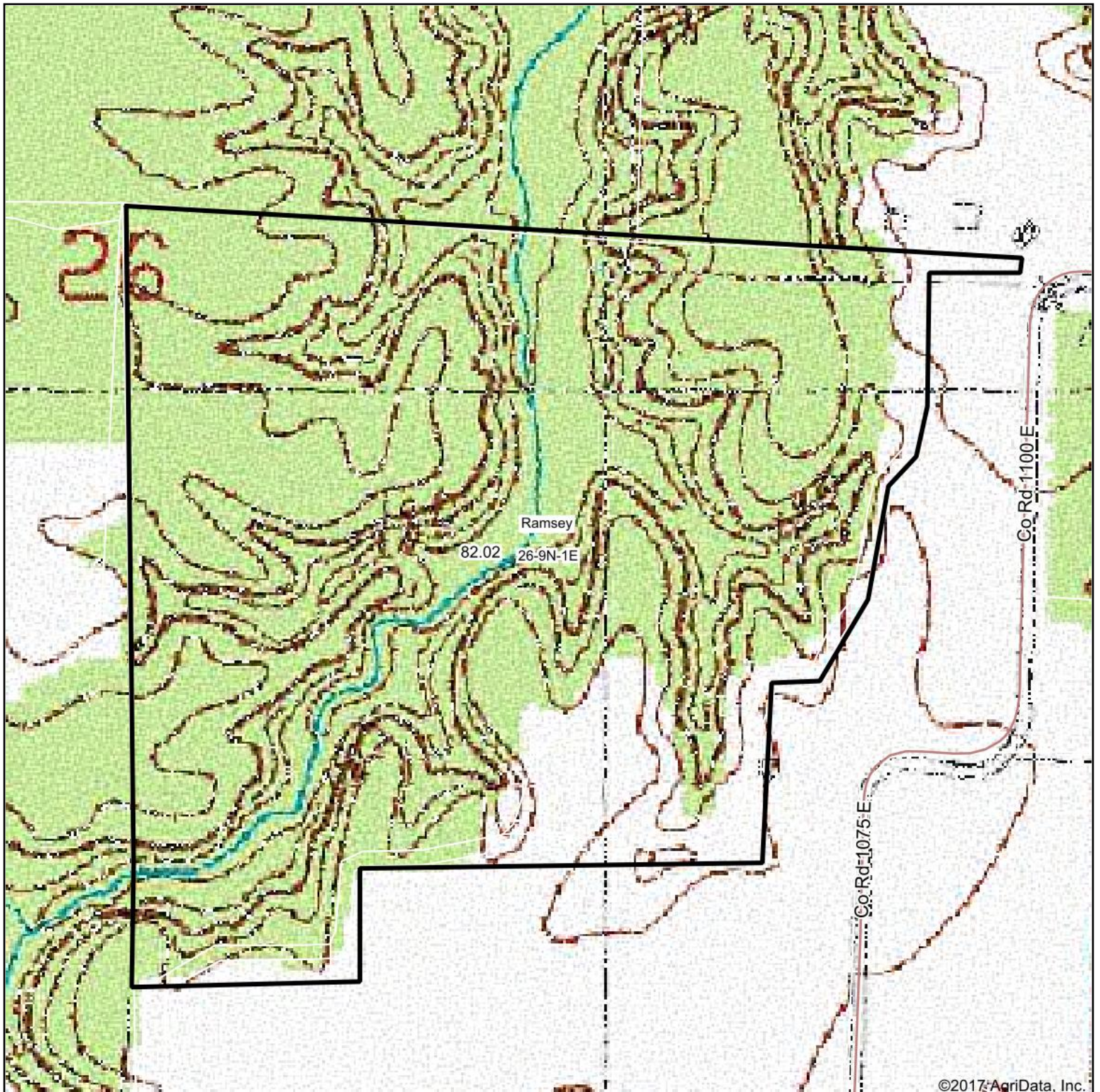
** Indexes adjusted for slope and erosion according to Bulletin 811 Table S3

e Soils in the well drained group were not rated for grass-legume and are shown with a zero "0".

Soils data provided by USDA and NRCS. Soils data provided by University of Illinois at Champaign-Urbana.

*c: Using Capabilities Class Dominant Condition Aggregation Method

Topography Map



©2017 AgriData, Inc.

map center: 39° 11' 31.01, -89° 3' 0.29

0ft 420ft 840ft



Maps Provided By:



© AgriData, Inc. 2017

www.AgriDataInc.com

26-9N-1E
Fayette County
Illinois



10/5/2017