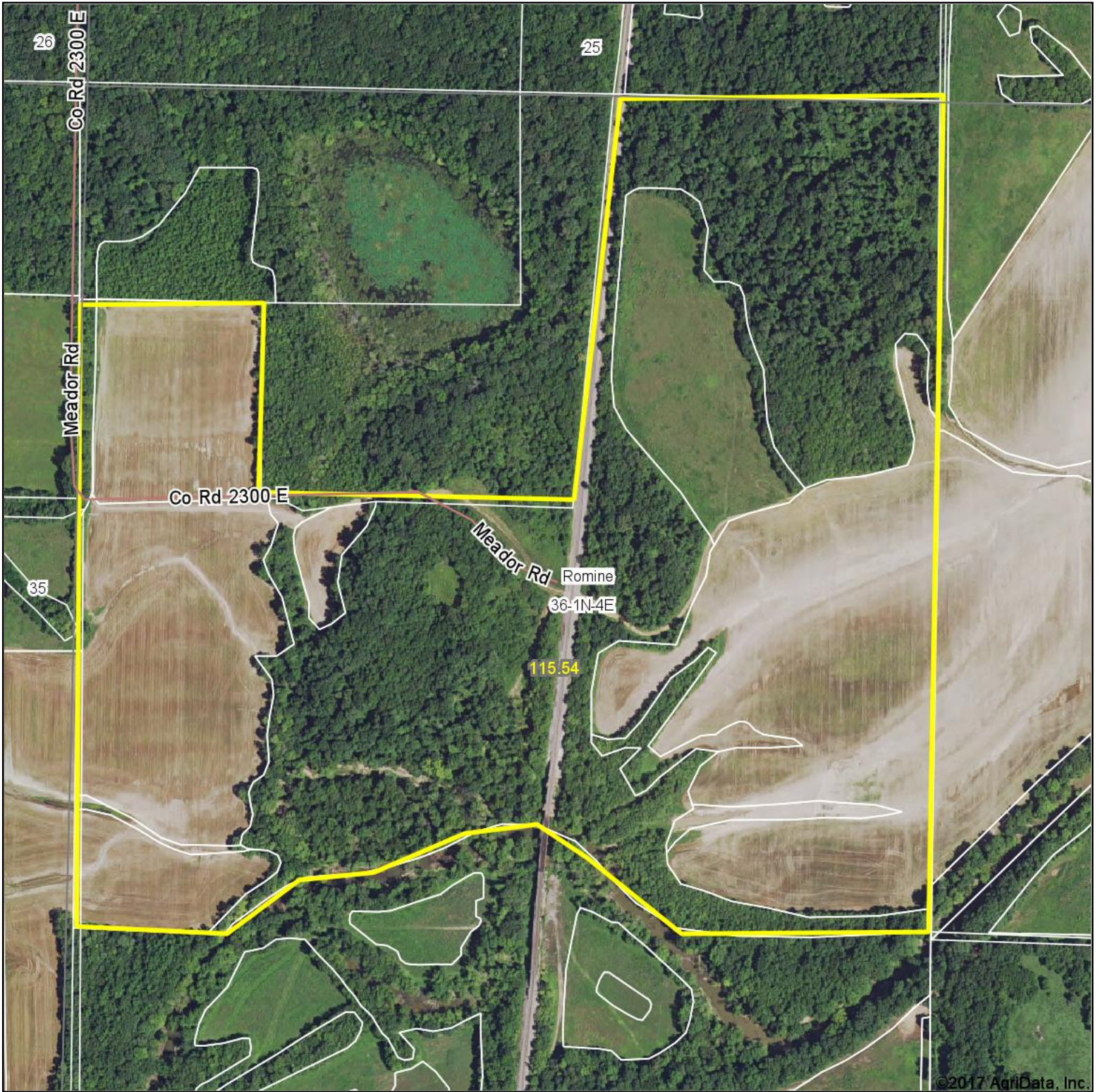


Aerial Map



©2017 AgriData, Inc.

map center: 38° 29' 8.51, -88° 42' 45.61



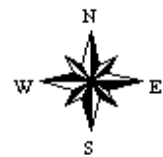
Maps Provided By:



© AgriData, Inc. 2017

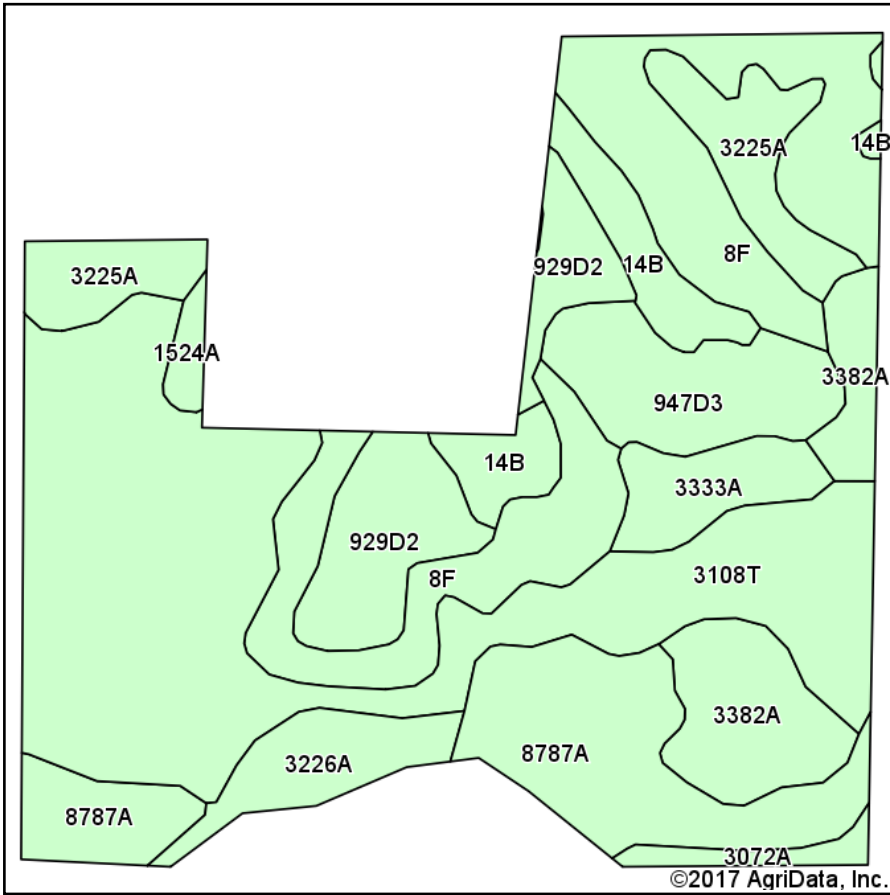
www.AgriDataInc.com

36-1N-4E
Marion County
Illinois

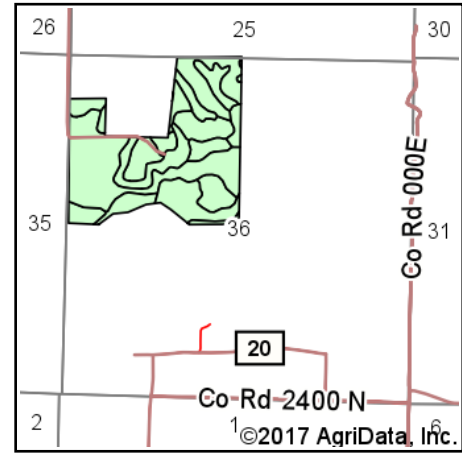


8/14/2017

Soils Map



Soils data provided by USDA and NRCS.



State: **Illinois**
 County: **Marion**
 Location: **36-1N-4E**
 Township: **Romine**
 Acres: **115.54**
 Date: **8/14/2017**



Area Symbol: IL121, Soil Area Version: 13

Code	Soil Description	Acres	Percent of field	Il. State Productivity Index Legend	Corn Bu/A	Soybeans Bu/A	Wheat Bu/A	Grass-legume e hay, T/A	Crop productivity index for optimum management
3108T	Bonnie silt loam, sodic, 0 to 2 percent slopes, frequently flooded	35.97	31.1%		149	49	59	4.64	111
**8F	Hickory silt loam, 18 to 35 percent slopes	20.49	17.7%		**86	**29	**35	0.00	**65
8787A	Banlic silt loam, 0 to 2 percent slopes, occasionally flooded	13.88	12.0%		142	47	56	4.64	106
**929D2	Ava-Hickory silt loams, 10 to 18 percent slopes, eroded	8.16	7.1%		**108	**36	**45	**2.99	**82
3382A	Belknap silt loam, 0 to 2 percent slopes, frequently flooded	7.90	6.8%		156	52	63	4.89	117
3225A	Holton silt loam, 0 to 2 percent slopes, frequently flooded	7.08	6.1%		135	43	50	4.26	100
**947D3	Hickory-Passport clay loams, 10 to 18 percent slopes, severely eroded	6.94	6.0%		**109	**36	**45	**2.89	**80
**14B	Ava silt loam, 2 to 5 percent slopes	5.41	4.7%		**134	**44	**54	0.00	**99
3226A	Wirt silt loam, 0 to 2 percent slopes, frequently flooded	4.06	3.5%		146	47	55	0.00	106
3333A	Wakeland silt loam, 0 to 2 percent slopes, frequently flooded	3.57	3.1%		174	56	68	5.14	128
3072A	Sharon silt loam, 0 to 2 percent slopes, frequently flooded	1.20	1.0%		164	53	63	0.00	122
1524A	Zipp silty clay loam, undrained, 0 to 2 percent slopes, frequently flooded	0.88	0.8%		137	46	53	4.26	103
Weighted Average					131.3	43.3	52.2	3.17	97.9

Table: Optimum Crop Productivity Ratings for Illinois Soil by K.R. Olson and J.M. Lang, Office of Research, ACES, University of Illinois at Champaign-Urbana. Version: 1/2/2012 Amended Table S2 B811

Crop yields and productivity indices for optimum management (B811) are maintained at the following NRES web site:

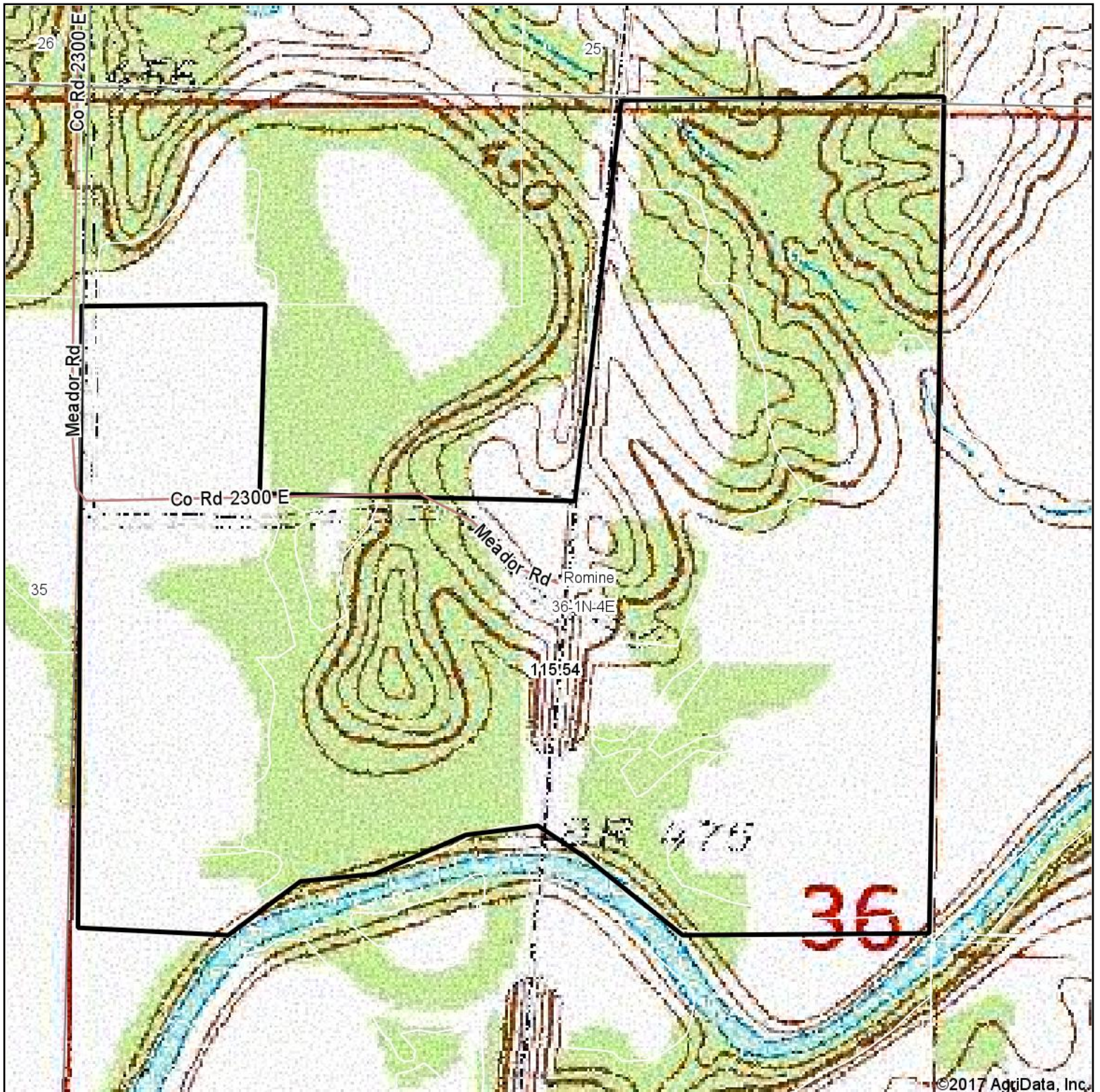
<https://www.ideals.illinois.edu/handle/2142/1027/>

** Indexes adjusted for slope and erosion according to Bulletin 811 Table S3

e Soils in the well drained group were not rated for grass-legume and are shown with a zero "0".

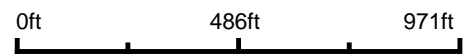
*c: Using Capabilities Class Dominant Condition Aggregation Method

Topography Map



©2017 AgriData, Inc.

map center: 38° 29' 8.51, -88° 42' 45.61



Maps Provided By:



© AgriData, Inc. 2017

www.AgriDataInc.com

36-1N-4E
Marion County
Illinois



8/14/2017