

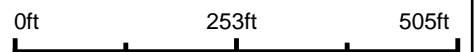
Aerial Map



©2017 AgriData, Inc.



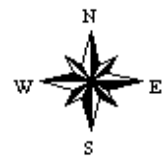
map center: 38° 42' 20.32, -88° 57' 43.84



Maps Provided By:

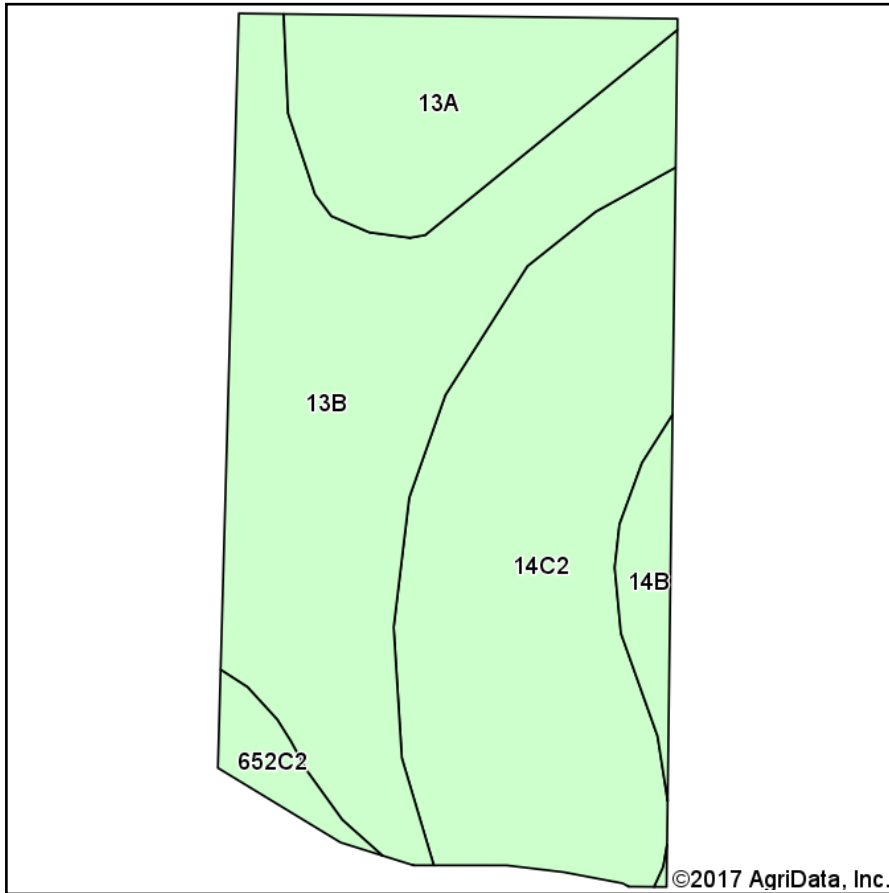
CUSTOMIZED ONLINE MAPPING
© AgriData, Inc. 2017 www.AgriDataInc.com

15-3N-2E
Marion County
Illinois

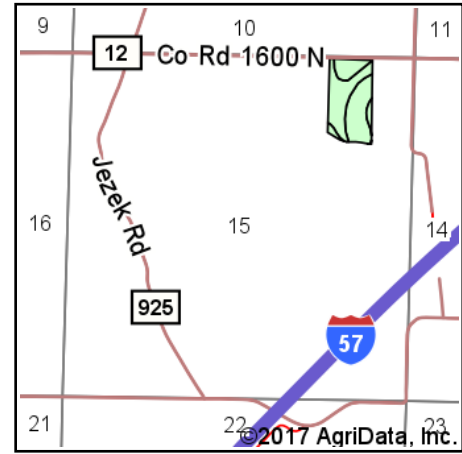


8/9/2017

Soils Map



Soils data provided by USDA and NRCS.



State: **Illinois**
 County: **Marion**
 Location: **15-3N-2E**
 Township: **Tonti**
 Acres: **19.33**
 Date: **8/9/2017**



Maps Provided By:



© AgriData, Inc. 2017

www.AgriDataInc.com



Area Symbol: IL121, Soil Area Version: 13

Code	Soil Description	Acres	Percent of field	Il. State Productivity Index Legend	Corn Bu/A	Soybeans Bu/A	Wheat Bu/A	Crop productivity index for optimum management
**13B	Bluford silt loam, 2 to 5 percent slopes	7.78	40.2%		**135	**44	**54	**100
**14C2	Ava silt loam, 5 to 10 percent slopes, eroded	7.47	38.6%		**122	**40	**50	**90
13A	Bluford silt loam, 0 to 2 percent slopes	2.94	15.2%		136	44	55	101
**14B	Ava silt loam, 2 to 5 percent slopes	0.65	3.4%		**134	**44	**54	**99
**652C2	Passport silt loam, 5 to 10 percent slopes, eroded	0.49	2.5%		**116	**39	**51	**88
Weighted Average					129.6	42.3	52.5	95.9

Table: Optimum Crop Productivity Ratings for Illinois Soil by K.R. Olson and J.M. Lang, Office of Research, ACES, University of Illinois at Champaign-Urbana. Version: 1/2/2012 Amended Table S2 B811

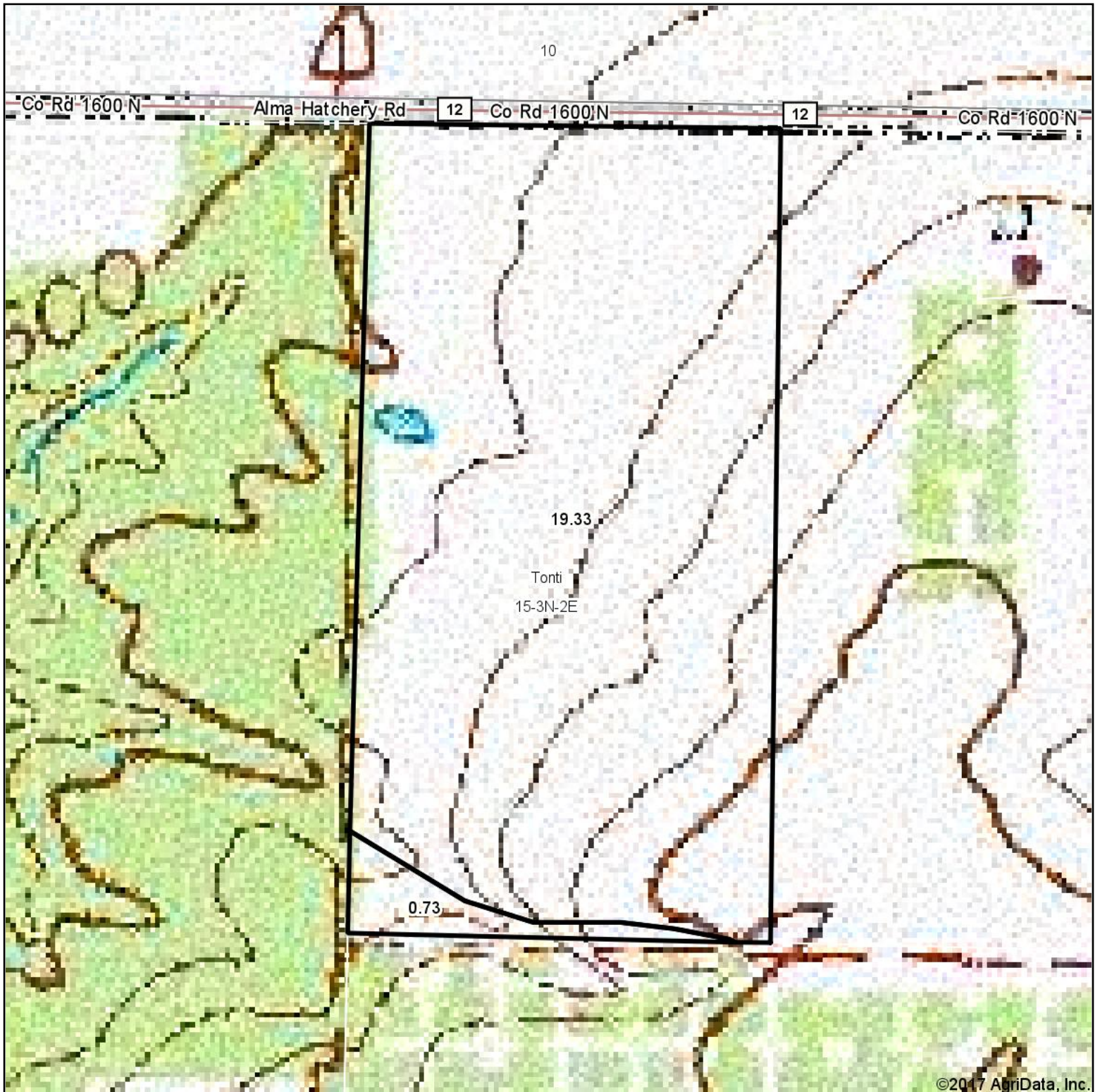
Crop yields and productivity indices for optimum management (B811) are maintained at the following NRES web site:

<https://www.ideals.illinois.edu/handle/2142/1027/>

** Indexes adjusted for slope and erosion according to Bulletin 811 Table S3

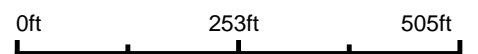
Soils data provided by USDA and NRCS. Soils data provided by University of Illinois at Champaign-Urbana.

Topography Map



©2017 AgriData, Inc.

map center: 38° 42' 20.32, -88° 57' 43.84



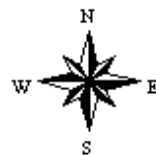
Maps Provided By:



© AgriData, Inc. 2017

www.AgriDataInc.com

15-3N-2E
Marion County
Illinois



8/9/2017