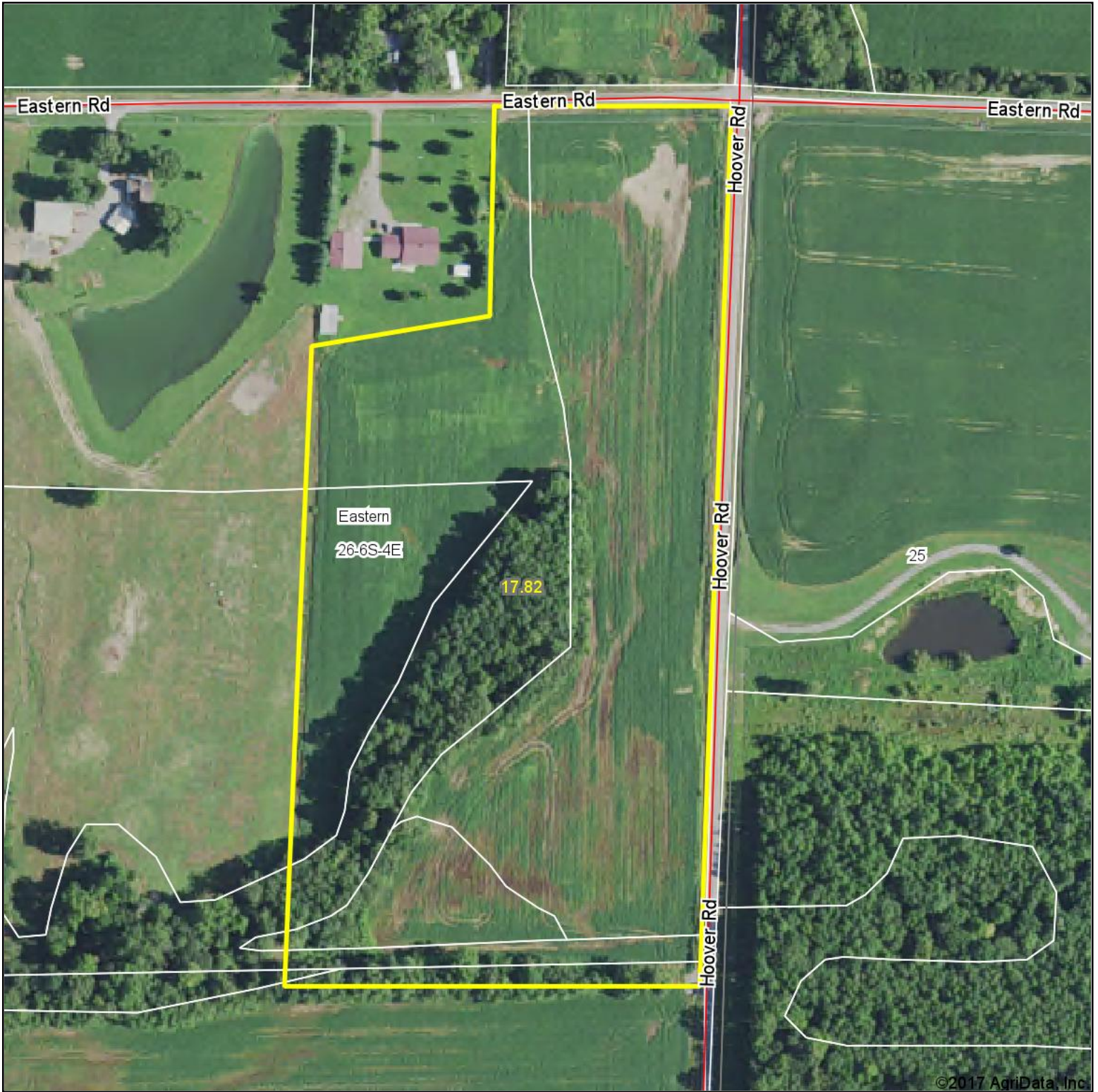


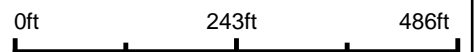
Aerial Map



©2017 AgriData, Inc.



map center: 37° 58' 17.18, -88° 43' 32.52

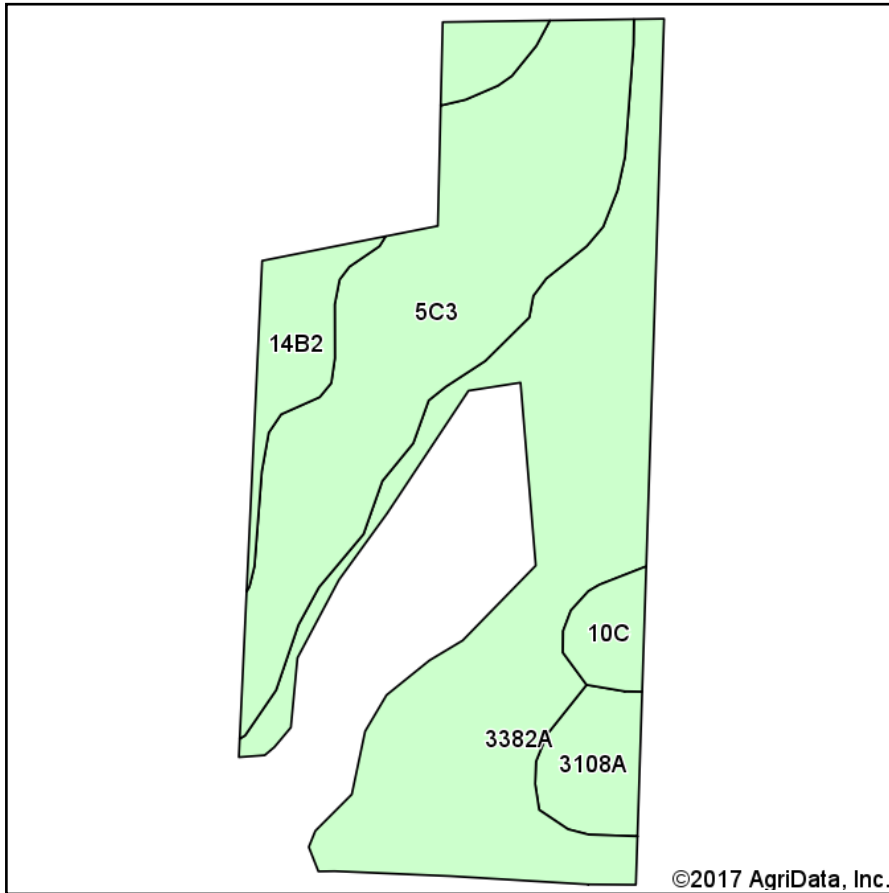


26-6S-4E
Franklin County
Illinois

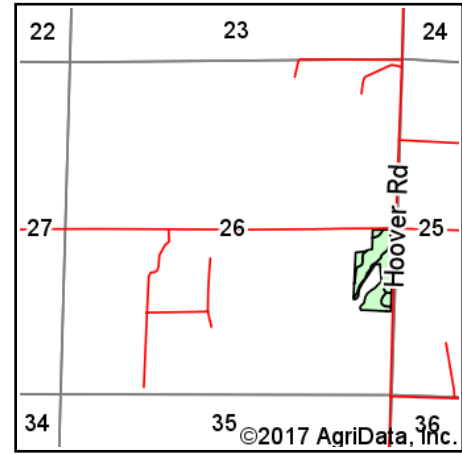


5/27/2017

Soils Map



Soils data provided by USDA and NRCS.



State: **Illinois**
 County: **Franklin**
 Location: **26-6S-4E**
 Township: **Eastern**
 Acres: **13**
 Date: **5/27/2017**



Maps Provided By:



© AgriData, Inc. 2017

www.AgriDataInc.com



Area Symbol: IL055, Soil Area Version: 10

Code	Soil Description	Acres	Percent of field	Il. State Productivity Index Legend	Corn Bu/A	Soybeans Bu/A	Wheat Bu/A	Crop productivity index for optimum management
3382A	Belknap silt loam, 0 to 2 percent slopes, frequently flooded	5.99	46.1%		156	52	63	117
**5C3	Blair silty clay loam, 5 to 10 percent slopes, severely eroded	4.82	37.1%		**102	**33	**41	**77
**14B2	Ava silt loam, 2 to 5 percent slopes, eroded	1.08	8.3%		**126	**41	**51	**93
3108A	Bonnie silt loam, 0 to 2 percent slopes, frequently flooded	0.70	5.4%		149	49	59	111
**10C	Plumfield silty clay loam, 5 to 10 percent slopes	0.41	3.2%		**103	**34	**39	**78
Weighted Average					131.4	43.3	52.9	98.6

Table: Optimum Crop Productivity Ratings for Illinois Soil by K.R. Olson and J.M. Lang, Office of Research, ACES, University of Illinois at Champaign-Urbana. Version: 1/2/2012 Amended Table S2 B811

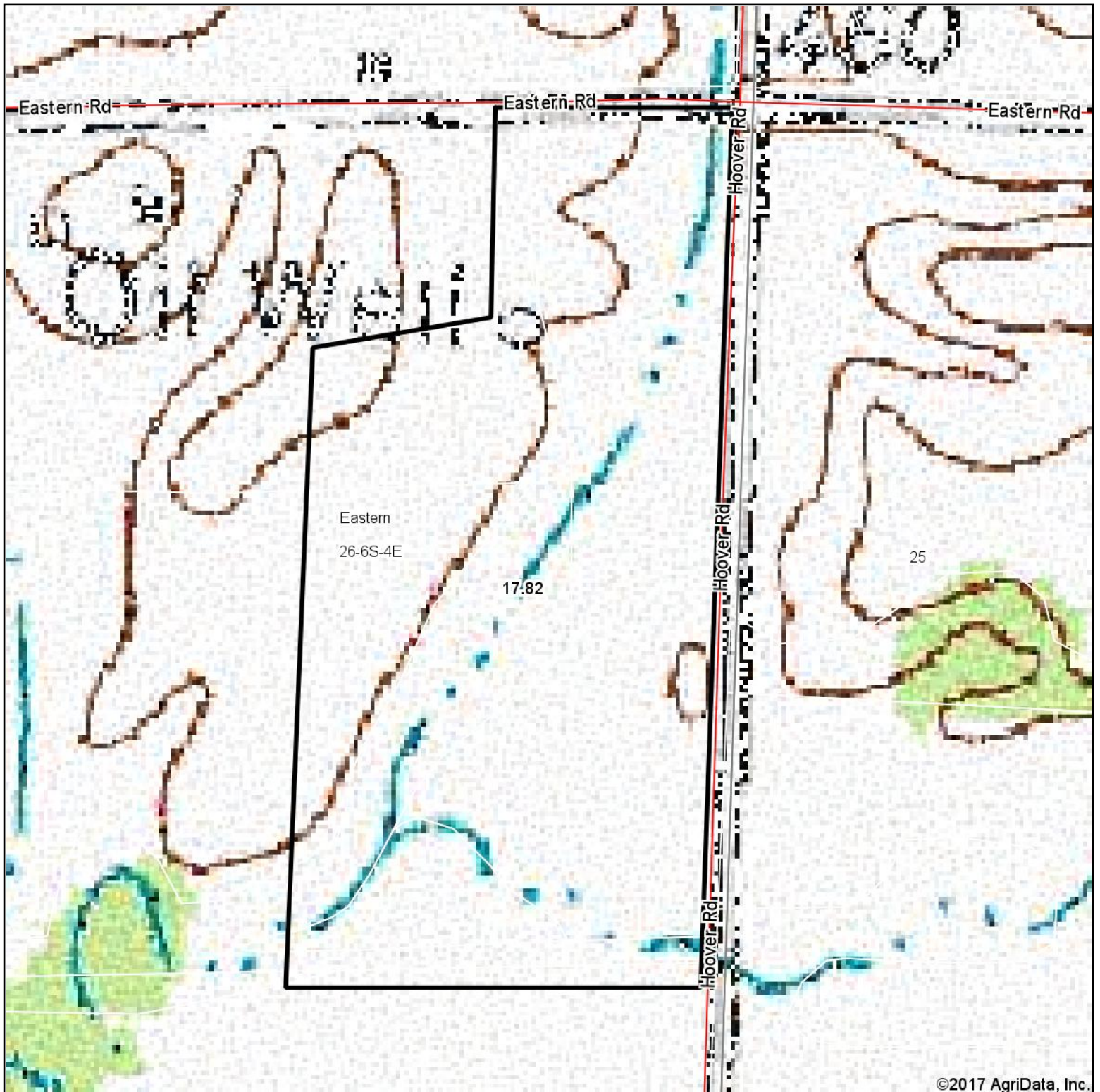
Crop yields and productivity indices for optimum management (B811) are maintained at the following NRES web site:

<https://www.ideals.illinois.edu/handle/2142/1027/>

** Indexes adjusted for slope and erosion according to Bulletin 811 Table S3

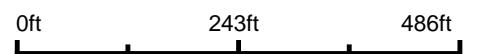
Soils data provided by USDA and NRCS. Soils data provided by University of Illinois at Champaign-Urbana.

Topography Map



©2017 AgriData, Inc.

map center: 37° 58' 17.18, -88° 43' 32.52



Maps Provided By:



© AgriData, Inc. 2017

www.AgriDataInc.com

26-6S-4E
Franklin County
Illinois



5/27/2017