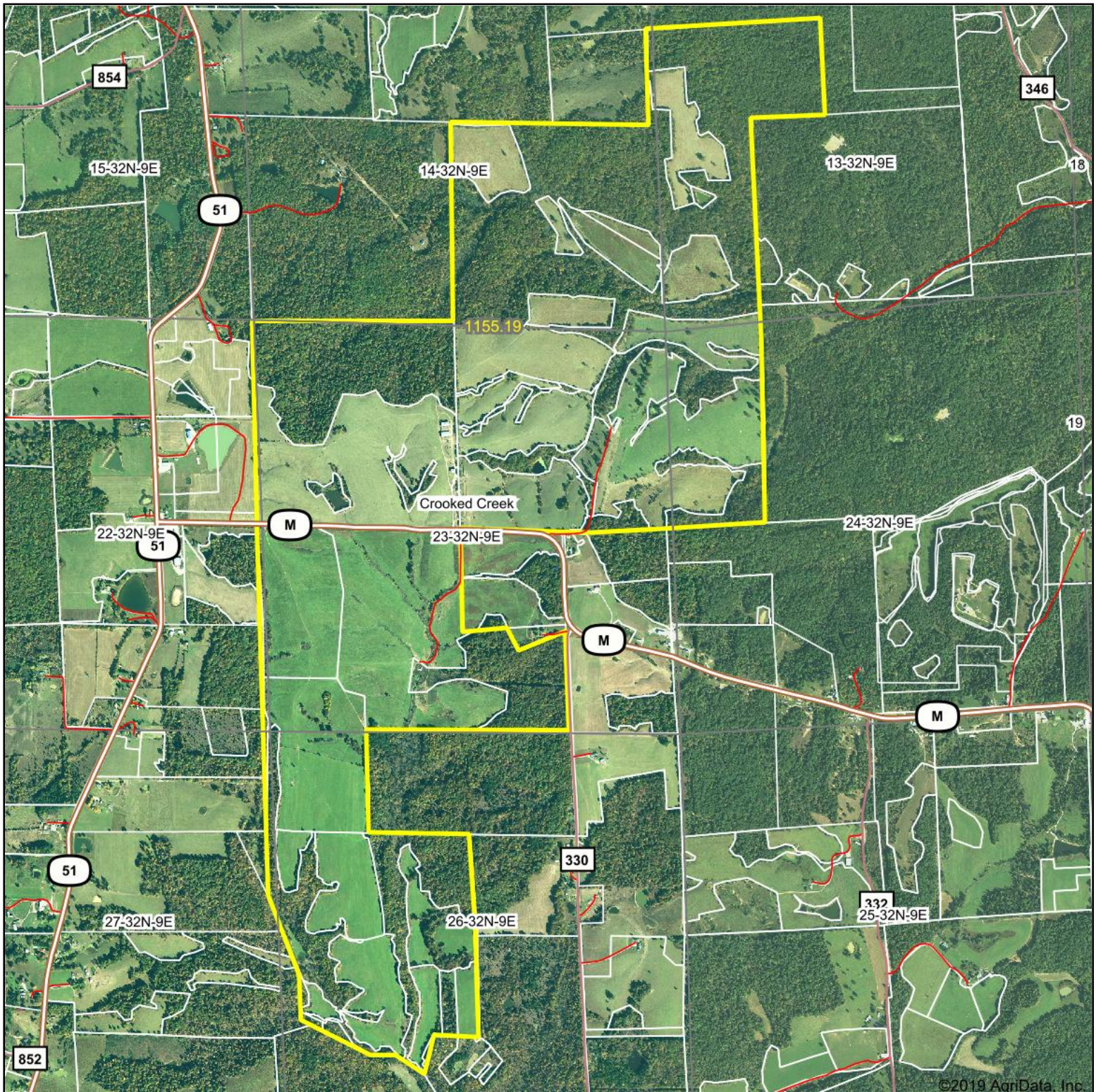


Aerial Map



©2019 AgriData, Inc.

Map Center: 37° 26' 24.77, -90° 1' 5.93

0ft 2070ft 4140ft



Maps Provided By:



© AgriData, Inc. 2019

www.AgriDataInc.com

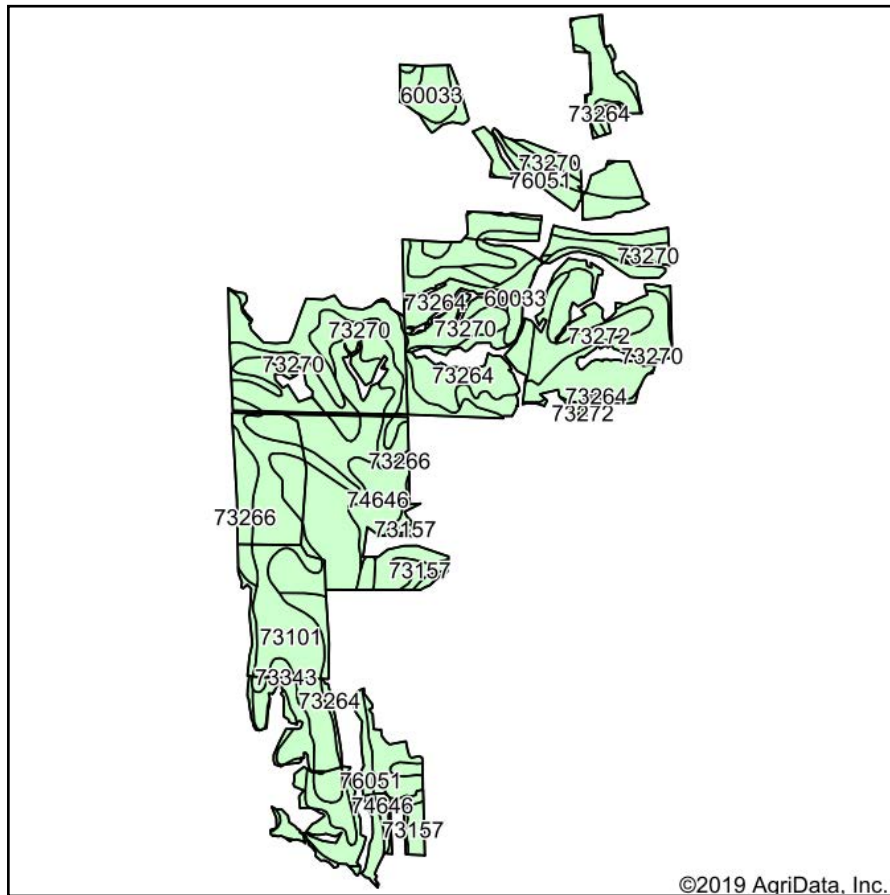
23-32N-9E
Bollinger County
Missouri



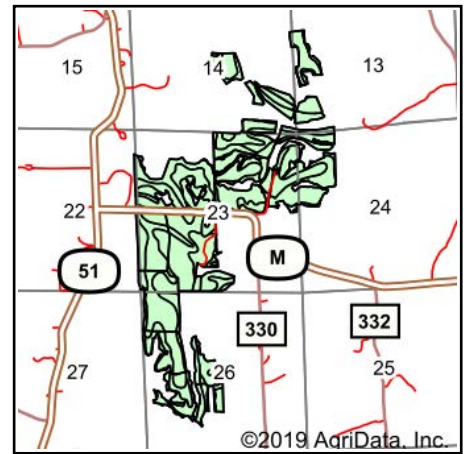
1/29/2020

Field borders provided by Farm Service Agency as of 5/21/2008.

Soils Map



Soils data provided by USDA and NRCS.



State: **Missouri**
 County: **Bollinger**
 Location: **23-32N-9E**
 Township: **Crooked Creek**
 Acres: **670.21**
 Date: **1/29/2020**



Maps Provided By:

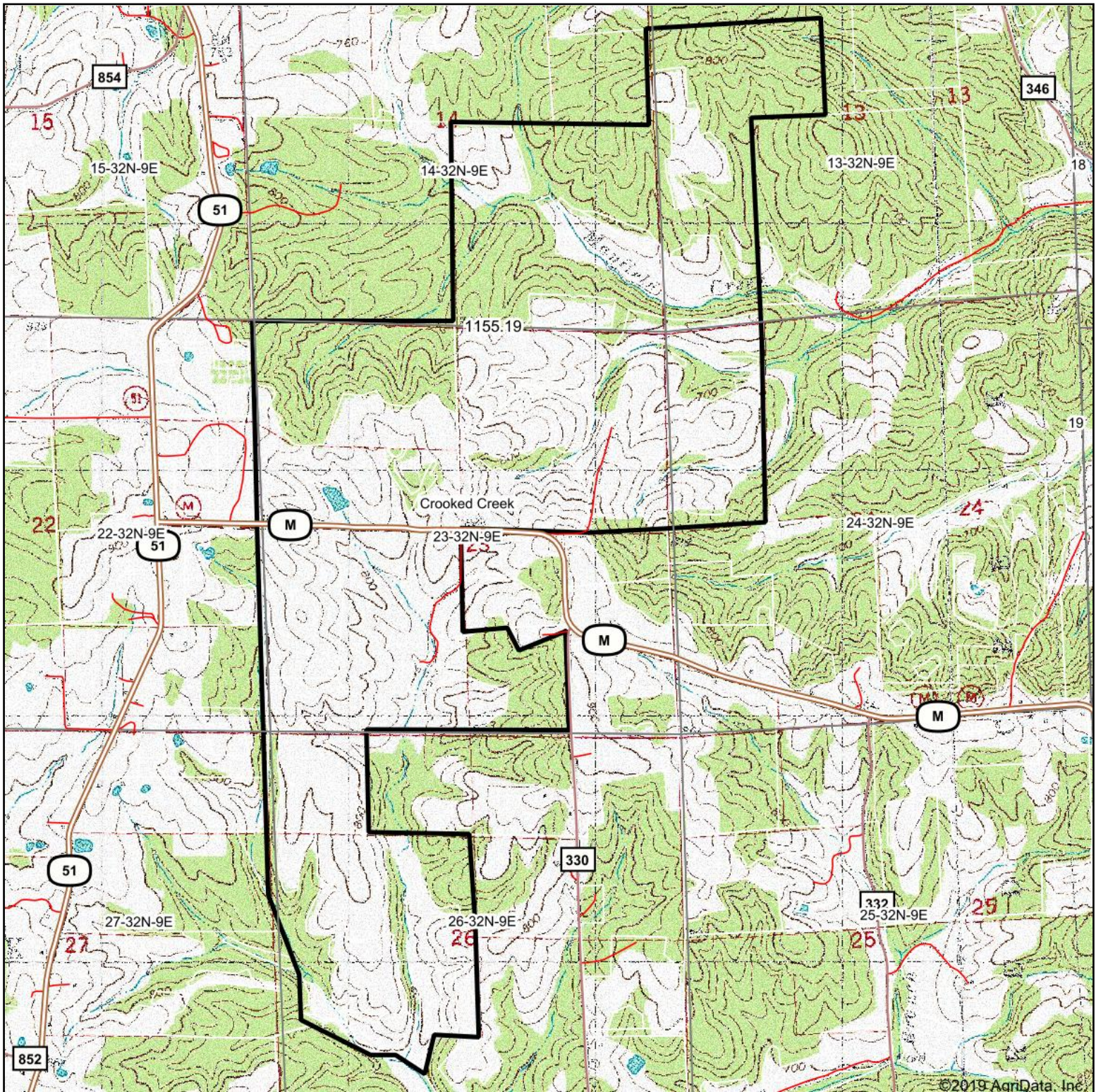


Area Symbol: MO017, Soil Area Version: 32

Code	Soil Description	Acres	Percent of field	Non-Irr Class	Cor n	Wheat	*n NCCPI Soybeans
73270	Wrengart silt loam, 9 to 14 percent slopes, moderately eroded	141.23	21.1%	IVe			41
73101	Wrengart silt loam, 5 to 9 percent slopes	134.27	20.0%	IIIe			63
73264	Alred-Wrengart complex, 15 to 35 percent slopes, rocky, very stony	122.08	18.2%	VIIe			6
73266	Hildebrecht silt loam, 8 to 15 percent slopes, eroded	111.66	16.7%	IVe			23
73272	Hildebrecht silt loam, 3 to 8 percent slopes	44.31	6.6%	IIIw			34
76051	Tilk-Secesh complex, 1 to 3 percent slopes, occasionally flooded	42.11	6.3%	IIIw			45
74646	Cornwall silt loam, 3 to 8 percent slopes	21.83	3.3%	IIIs			40
73343	Captina silt loam, 3 to 8 percent slopes, eroded	21.62	3.2%	IIIe			18
60033	Wrengart silt loam, 5 to 9 percent slopes, eroded	19.54	2.9%	IIIe			52
73157	Captina silt loam, 3 to 8 percent slopes	11.56	1.7%	IIIe	60	26	29
Weighted Average						1	0.4
							*n 35.2

*n: The aggregation method is "Weighted Average using major components"
 Soils data provided by USDA and NRCS.

Topography Map



map center: 37° 26' 24.77, -90° 1' 5.93

0ft 2070ft 4140ft



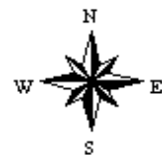
Maps Provided By:



© AgriData, Inc. 2019

www.AgriDataInc.com

23-32N-9E
Bollinger County
Missouri



1/29/2020