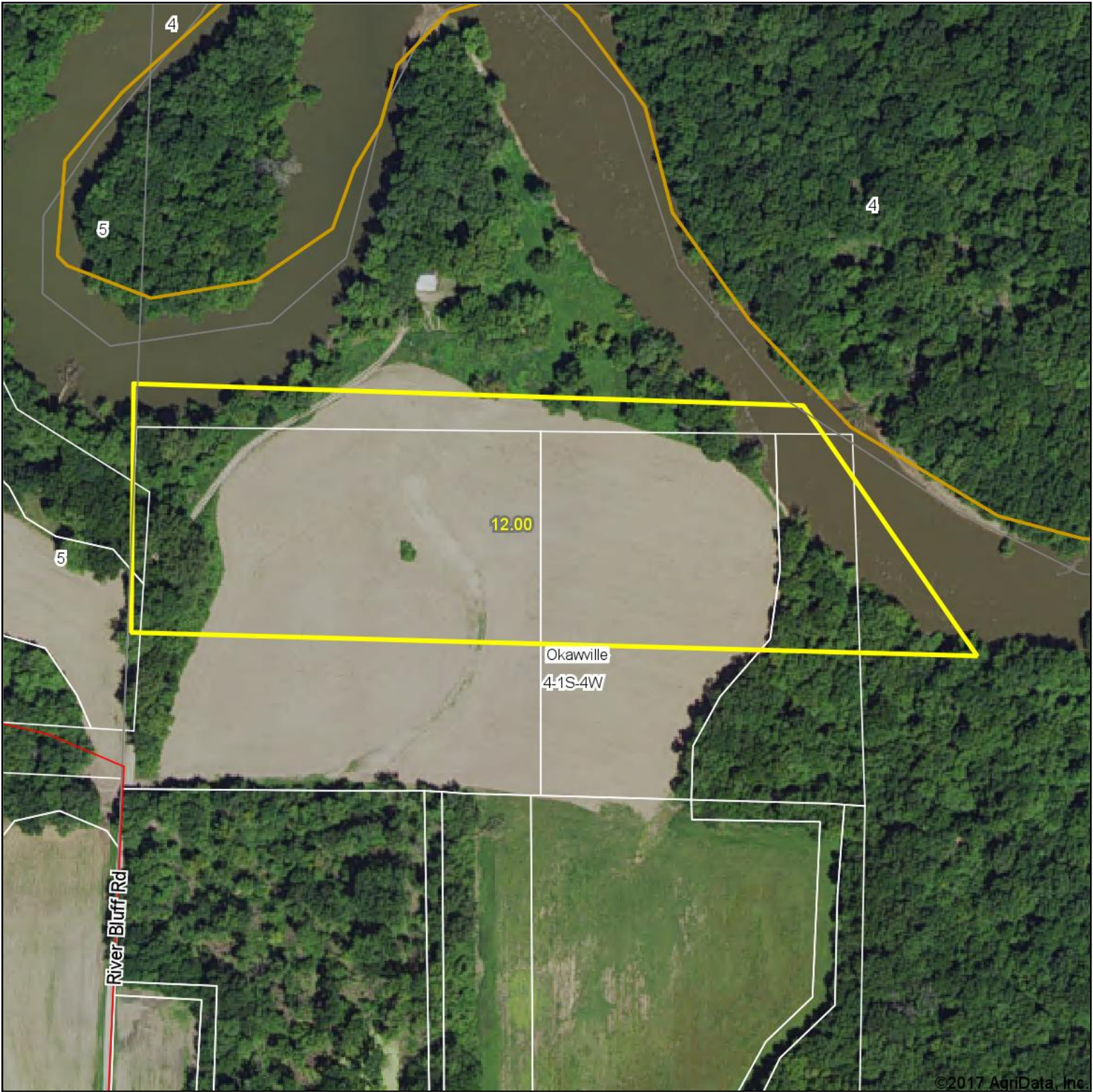


Aerial Map



©2017 AgriData, Inc.



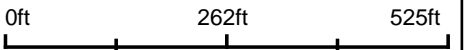
Maps Provided By:



© AgriData, Inc. 2017

www.AgriDataInc.com

map center: 38° 28' 28.11, -89° 32' 57.38

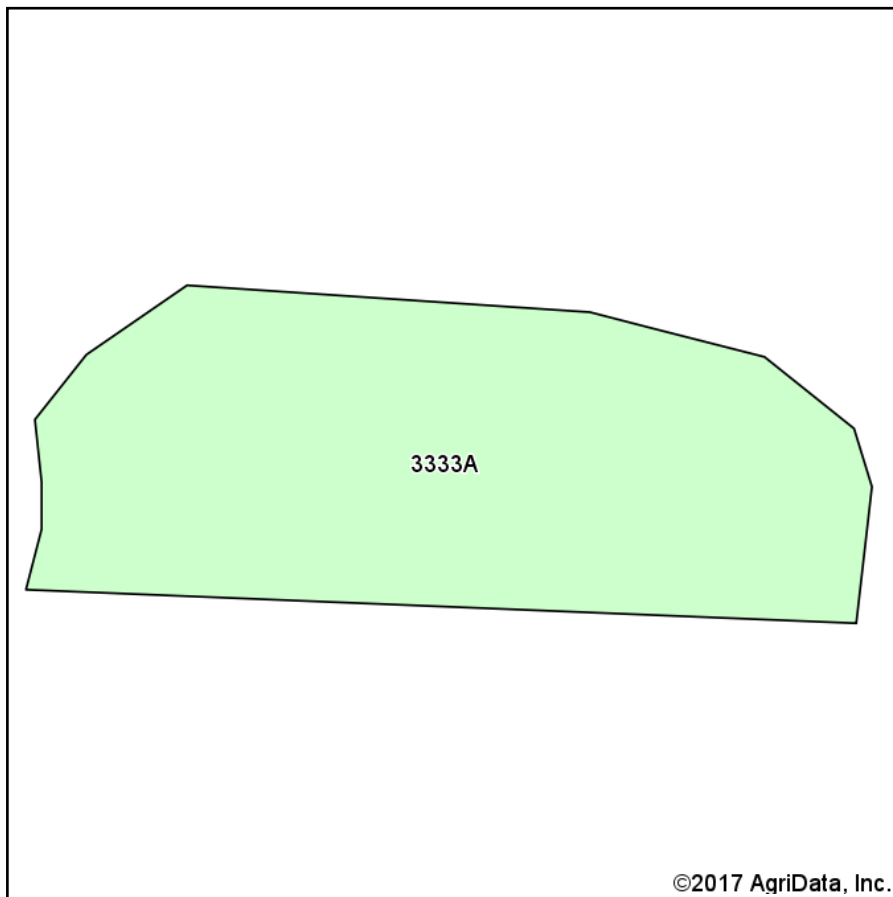


4-1S-4W
Washington County
Illinois

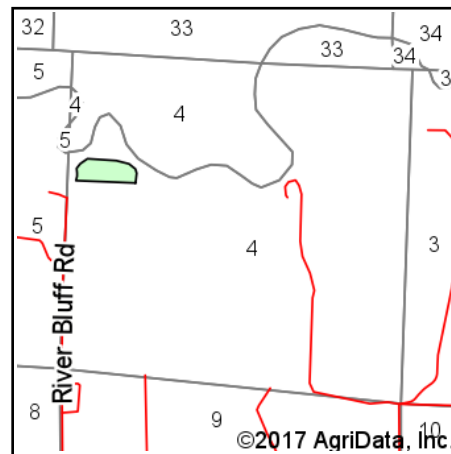


2/22/2017

Soils Map



Soils data provided by USDA and NRCS.



State: **Illinois**
 County: **Washington**
 Location: **4-1S-4W**
 Township: **Okawville**
 Acres: **6.66**
 Date: **2/22/2017**



Maps Provided By:

 © AgriData, Inc. 2017 www.AgriDataInc.com



Area Symbol: IL189, Soil Area Version: 11

Code	Soil Description	Acres	Percent of field	Il. State Productivity Index Legend	Corn Bu/A	Soybeans Bu/A	Wheat Bu/A	Crop productivity index for optimum management
3333A	Wakeland silt loam, 0 to 2 percent slopes, frequently flooded	6.66	100.0%		174	56	68	128
Weighted Average					174	56	68	128

Area Symbol: IL189, Soil Area Version: 11

Table: Optimum Crop Productivity Ratings for Illinois Soil by K.R. Olson and J.M. Lang, Office of Research, ACES, University of Illinois at Champaign-Urbana. Version: 1/2/2012 Amended Table S2 B811

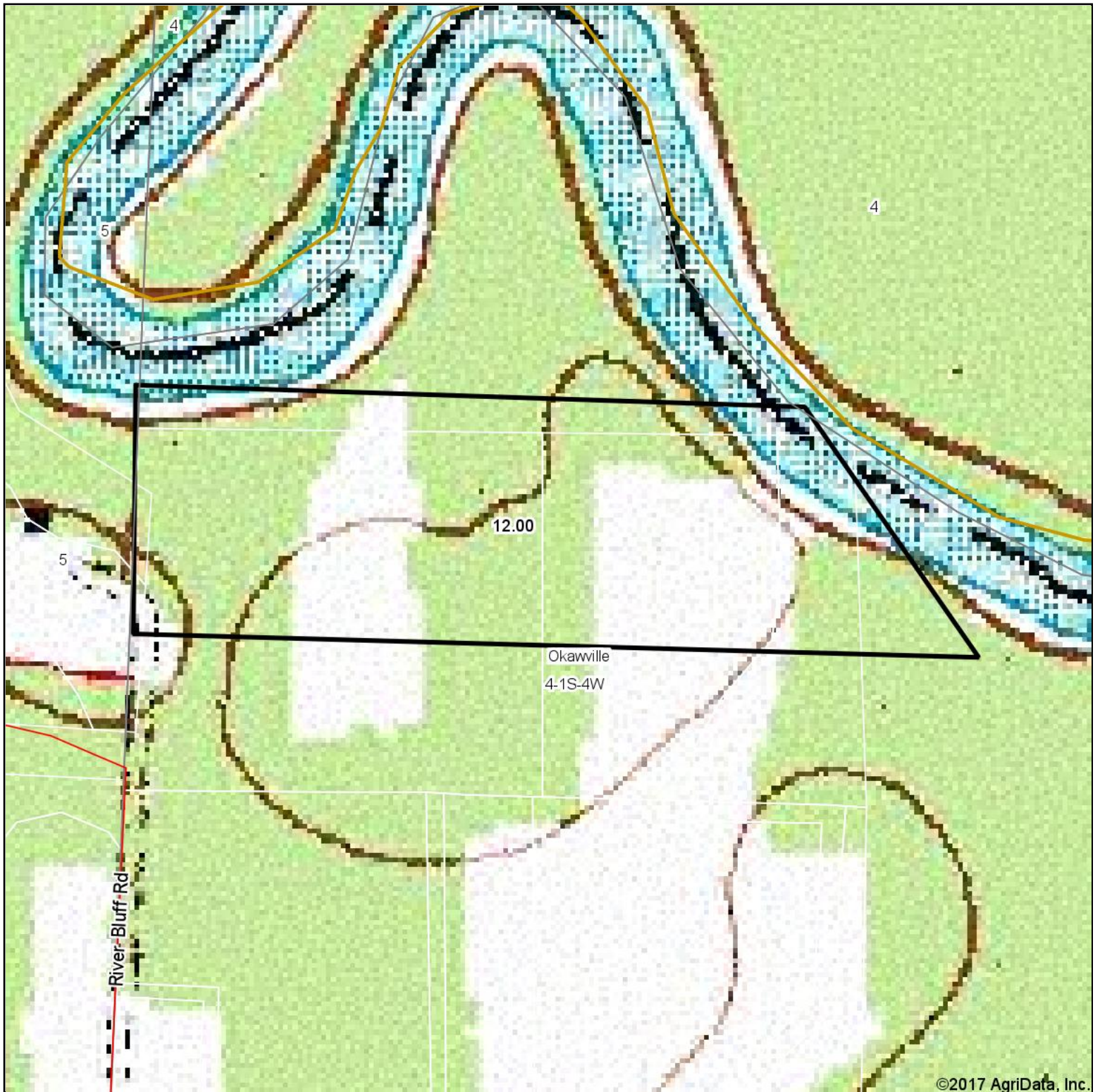
Crop yields and productivity indices for optimum management (B811) are maintained at the following NRES web site:

<https://www.ideals.illinois.edu/handle/2142/1027/>

** Indexes adjusted for slope and erosion according to Bulletin 811 Table S3

Soils data provided by USDA and NRCS. Soils data provided by University of Illinois at Champaign-Urbana.

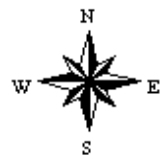
Topography Map



map center: 38° 28' 28.11, -89° 32' 57.38

0ft 262ft 525ft

4-1S-4W
Washington County
Illinois



2/22/2017



Maps Provided By:



© AgriData, Inc. 2017

www.AgriDataInc.com