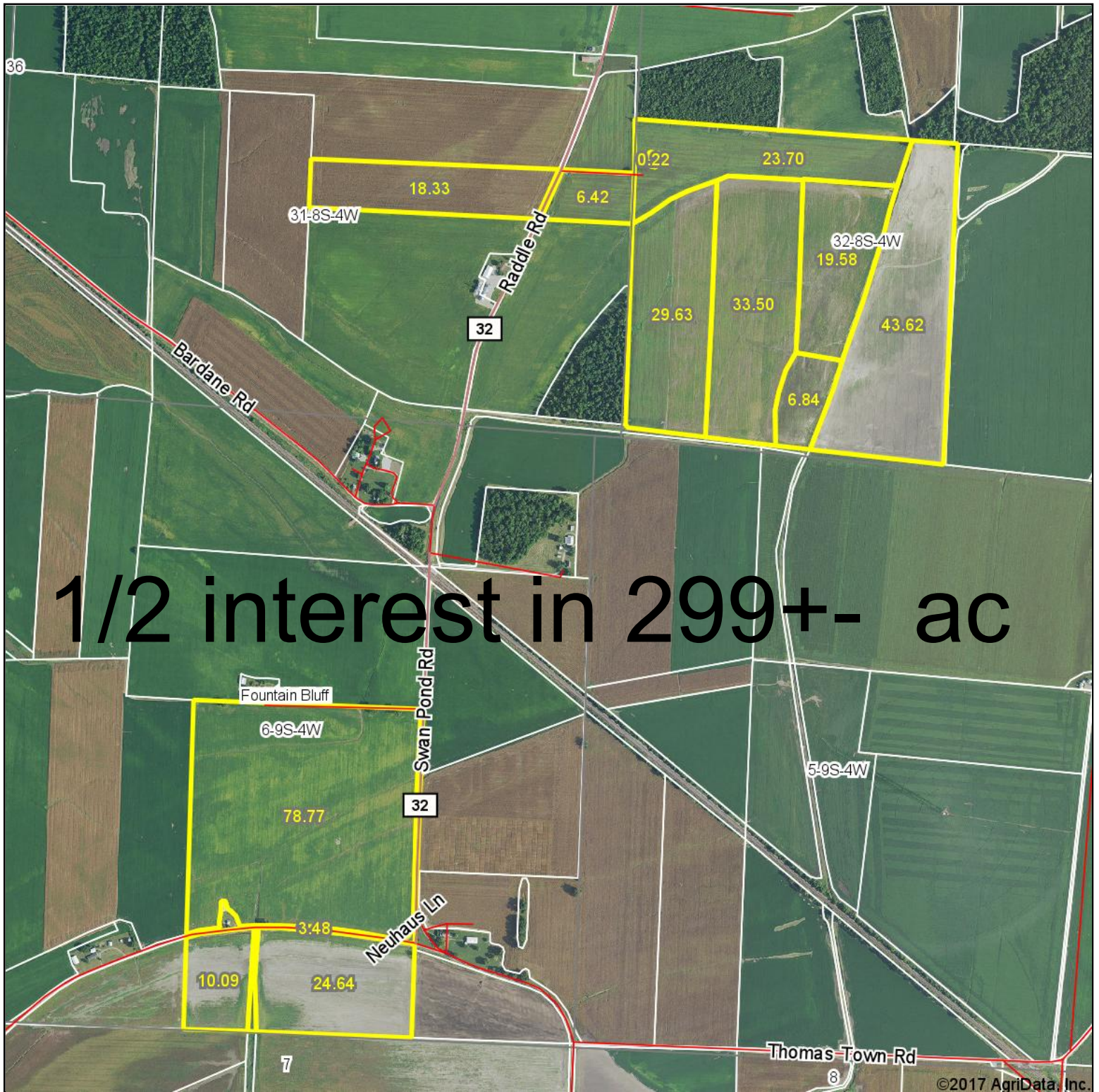


Aerial Map



©2017 AgriData, Inc.

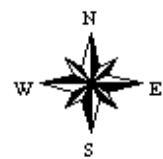


map center: 37° 46' 40.63, -89° 35' 0.85

0ft 1280ft 2559ft

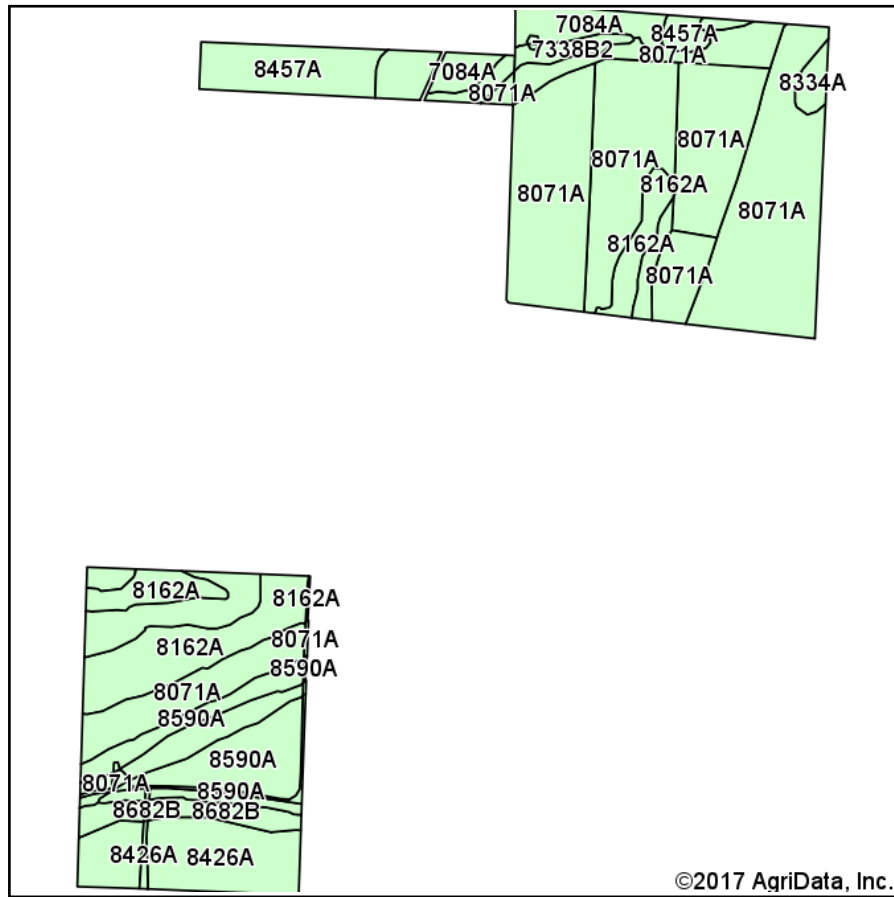
Maps Provided By:
surety
CUSTOMIZED ONLINE MAPPING
© AgriData, Inc. 2017 www.AgriDataInc.com

6-9S-4W
Jackson County
Illinois

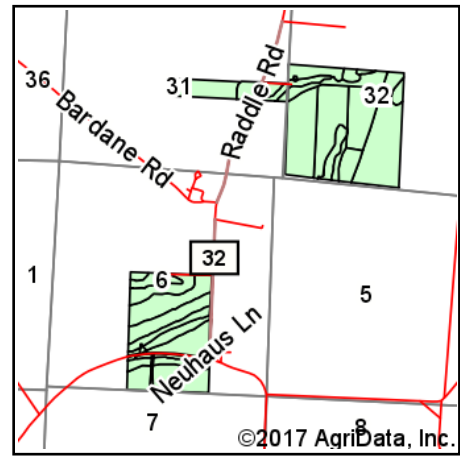


2/21/2017

Soils Map



Soils data provided by USDA and NRCS.



State: **Illinois**
 County: **Jackson**
 Location: **6-9S-4W**
 Township: **Fountain Bluff**
 Acres: **298.82**
 Date: **2/21/2017**



Maps Provided By:



© AgriData, Inc. 2017

www.AgriDataInc.com



Area Symbol: IL077, Soil Area Version: 16

Code	Soil Description	Acres	Percent of field	Il. State Productivity Index Legend	Corn Bu/A	Soybeans Bu/A	Wheat Bu/A	Crop productivity index for optimum management
8071A	Darwin silty clay, 0 to 2 percent slopes, occasionally flooded	167.99	56.2%		149	50	60	111
8162A	Gorham silty clay loam, 0 to 2 percent slopes, occasionally flooded	30.92	10.3%		175	57	68	130
8590A	Cairo silty clay, 0 to 2 percent slopes, occasionally flooded	25.89	8.7%		159	53	61	119
8426A	Karnak silty clay, 0 to 2 percent slopes, occasionally flooded	24.37	8.2%		134	45	53	101
8457A	Booker silty clay, 0 to 2 percent slopes, occasionally flooded	17.95	6.0%		116	41	44	89
7084A	Okaw silt loam, 0 to 2 percent slopes, rarely flooded	15.98	5.3%		129	42	55	96
8682B	Medway silty clay loam, 1 to 6 percent slopes, occasionally flooded	7.50	2.5%		176	57	69	131
7338B2	Hurst silt loam, 2 to 5 percent slopes, eroded, rarely flooded	5.58	1.9%		134	44	55	100
8334A	Birds silt loam, 0 to 2 percent slopes, occasionally flooded	2.64	0.9%		157	51	61	117
Weighted Average					148.7	49.7	59.3	111.1

Area Symbol: IL077, Soil Area Version: 16

Table: Optimum Crop Productivity Ratings for Illinois Soil by K.R. Olson and J.M. Lang, Office of Research, ACES, University of Illinois at Champaign-Urbana. Version: 1/2/2012 Amended Table S2 B811

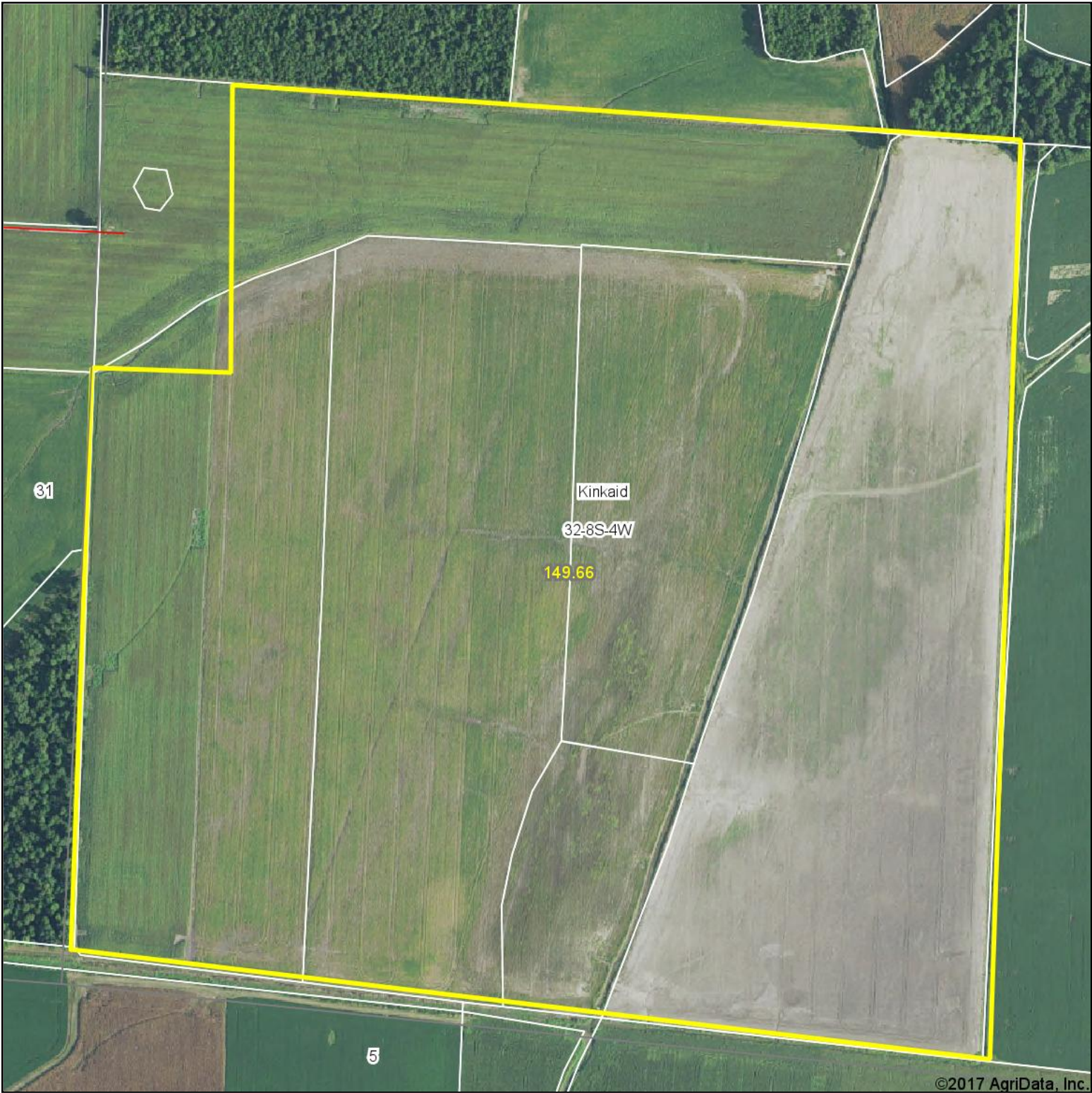
Crop yields and productivity indices for optimum management (B811) are maintained at the following NRES web site:

<https://www.ideals.illinois.edu/handle/2142/1027/>

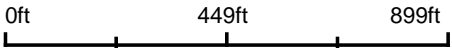
** Indexes adjusted for slope and erosion according to Bulletin 811 Table S3

Soils data provided by USDA and NRCS. Soils data provided by University of Illinois at Champaign-Urbana.

Aerial Map



map center: 37° 47' 2.58, -89° 34' 36.77



Maps Provided By:
 **surety**
CUSTOMIZED ONLINE MAPPING
© AgriData, Inc. 2017 www.AgriDataInc.com

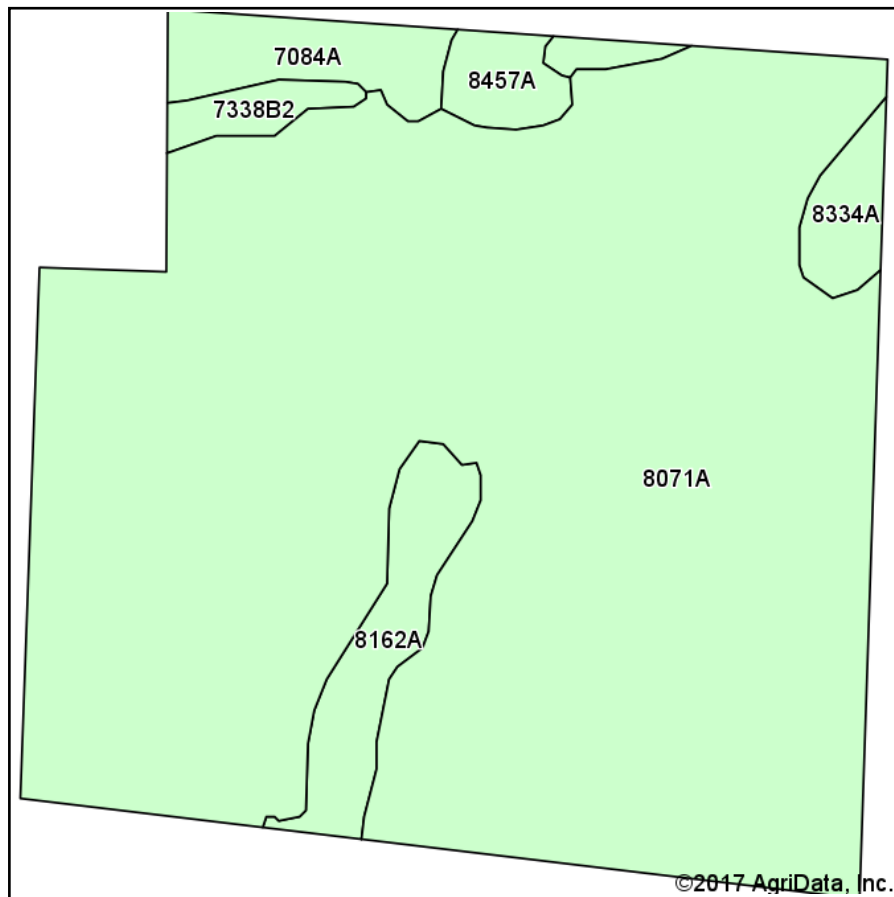
32-8S-4W
Jackson County
Illinois



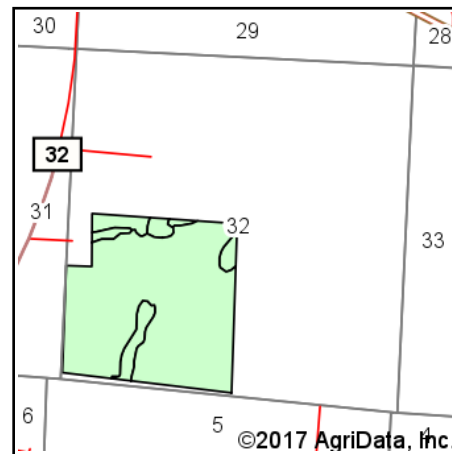
2/9/2017

Field borders provided by Farm Service Agency as of 5/21/2008. Soils data provided by University of Illinois at Champaign-Urbana.

Soils Map



Soils data provided by USDA and NRCS.



State: **Illinois**
 County: **Jackson**
 Location: **32-8S-4W**
 Township: **Kinkaid**
 Acres: **149.66**
 Date: **2/9/2017**



Maps Provided By:

 © AgriData, Inc. 2017 www.AgriDataInc.com



Area Symbol: IL077, Soil Area Version: 16

Code	Soil Description	Acres	Percent of field	Il. State Productivity Index Legend	Corn Bu/A	Soybeans Bu/A	Wheat Bu/A	Crop productivity index for optimum management
8071A	Darwin silty clay, 0 to 2 percent slopes, occasionally flooded	131.30	87.7%		149	50	60	111
8162A	Gorham silty clay loam, 0 to 2 percent slopes, occasionally flooded	6.07	4.1%		175	57	68	130
7084A	Okaw silt loam, 0 to 2 percent slopes, rarely flooded	5.54	3.7%		129	42	55	96
8334A	Birds silt loam, 0 to 2 percent slopes, occasionally flooded	2.57	1.7%		157	51	61	117
8457A	Booker silty clay, 0 to 2 percent slopes, occasionally flooded	2.38	1.6%		116	41	44	89
7338B2	Hurst silt loam, 2 to 5 percent slopes, eroded, rarely flooded	1.80	1.2%		134	44	55	100
Weighted Average					148.7	49.8	59.8	110.8

Area Symbol: IL077, Soil Area Version: 16

Table: Optimum Crop Productivity Ratings for Illinois Soil by K.R. Olson and J.M. Lang, Office of Research, ACES, University of Illinois at Champaign-Urbana. Version: 1/2/2012 Amended Table S2 B811

Crop yields and productivity indices for optimum management (B811) are maintained at the following NRES web site:

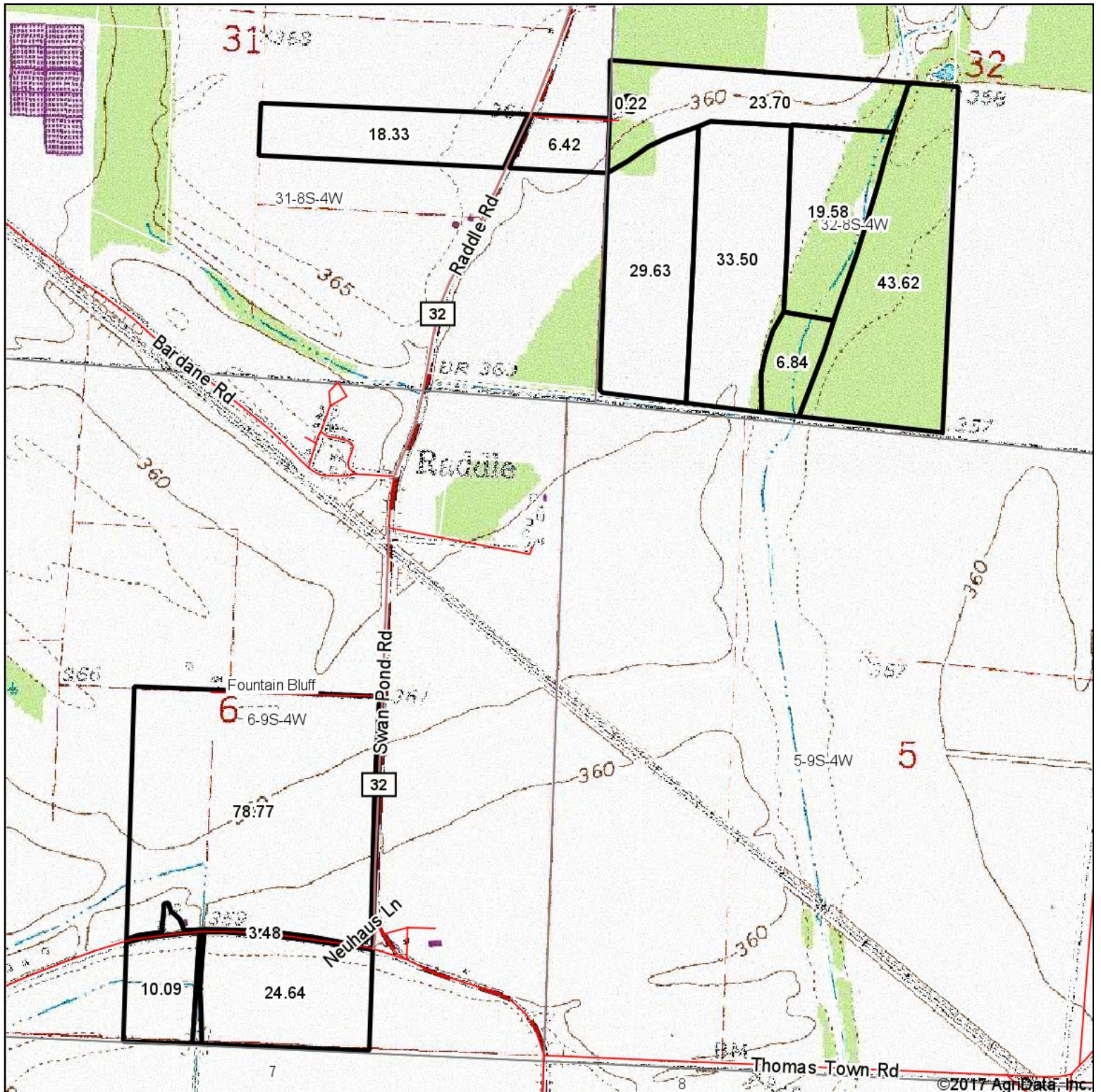
<https://www.ideals.illinois.edu/handle/2142/1027/>

** Indexes adjusted for slope and erosion according to Bulletin 811 Table S3

Soils data provided by USDA and NRCS. Soils data provided by University of Illinois at Champaign-Urbana.

*c: Using Capabilities Class Dominant Condition Aggregation Method

Topography Map



©2017 AgriData, Inc.

map center: 37° 46' 38.78, -89° 34' 57.72

0ft 1188ft 2375ft



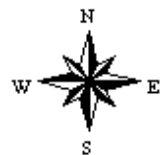
Maps Provided By:



© AgriData, Inc. 2017

www.AgriDataInc.com

6-9S-4W
Jackson County
Illinois



2/22/2017