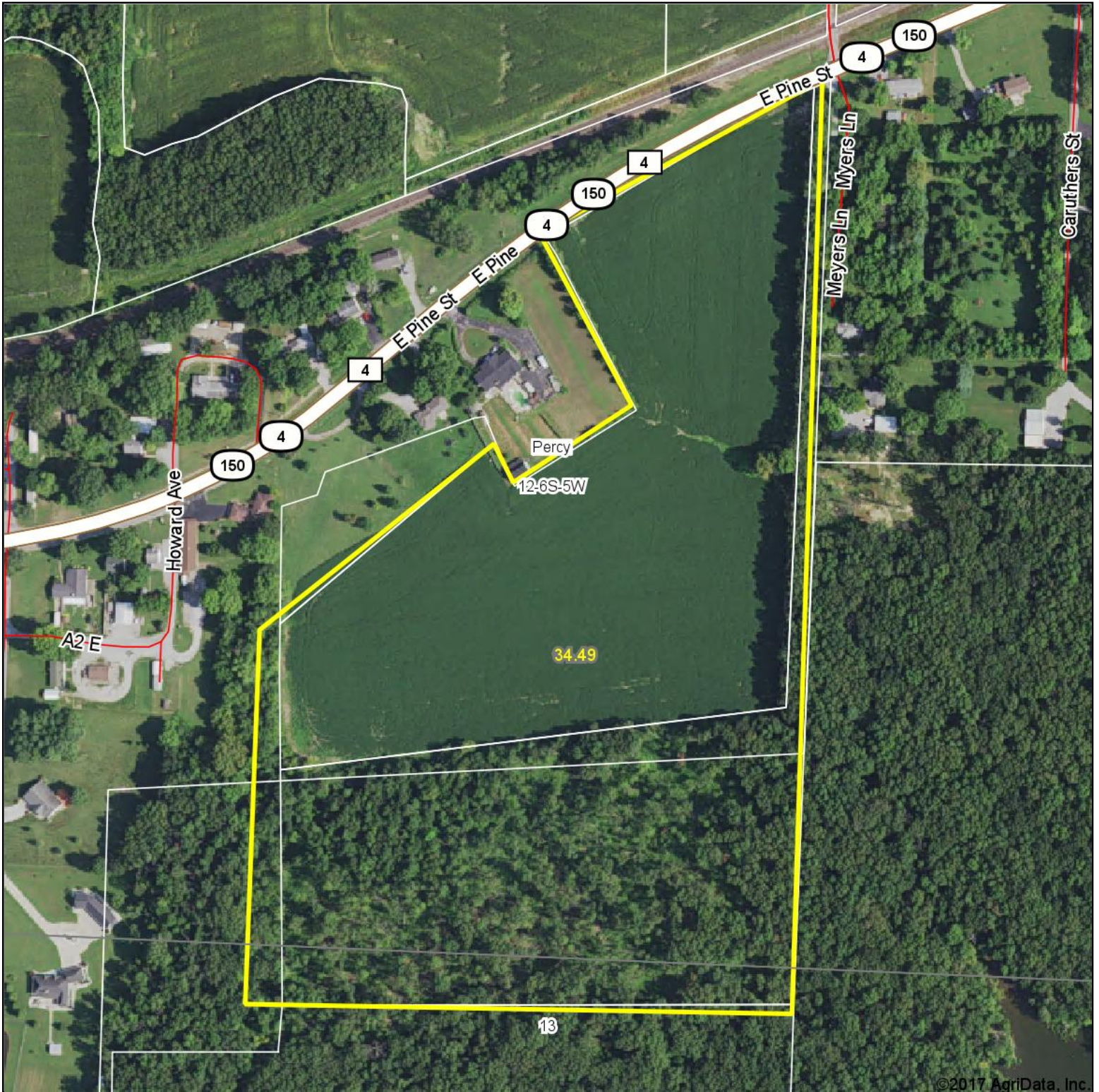
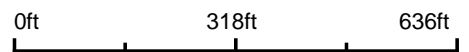


# Aerial Map



©2017 AgriData, Inc.

map center: 38° 0' 59.79, -89° 36' 17.47

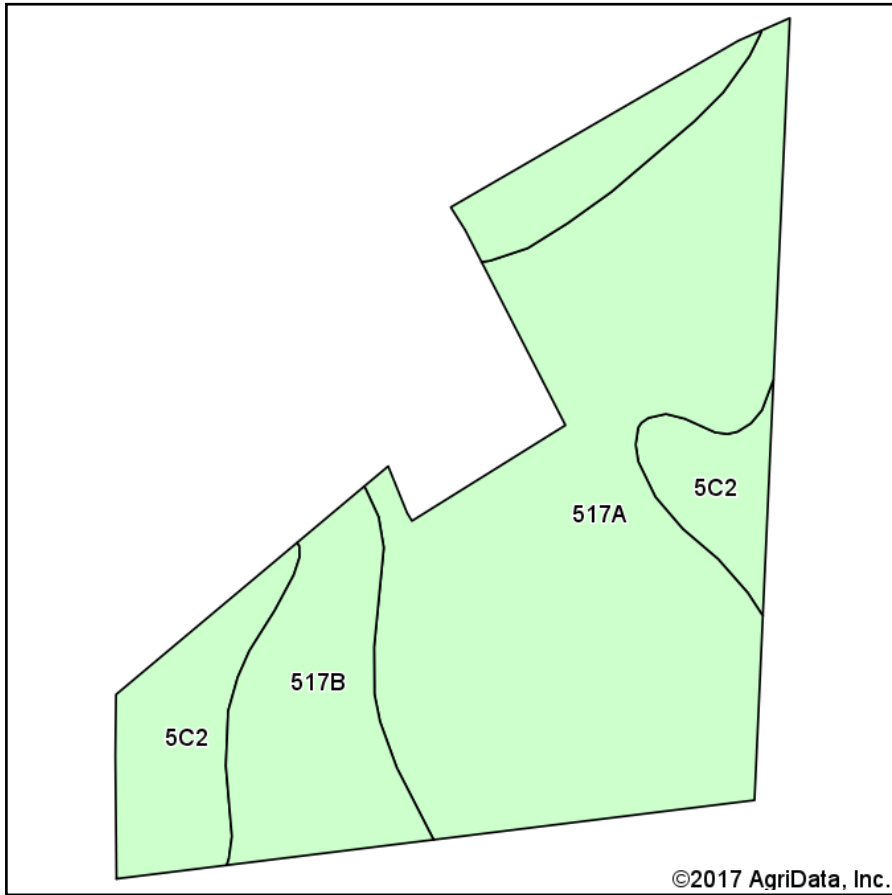


**12-6S-5W**  
**Randolph County**  
**Illinois**

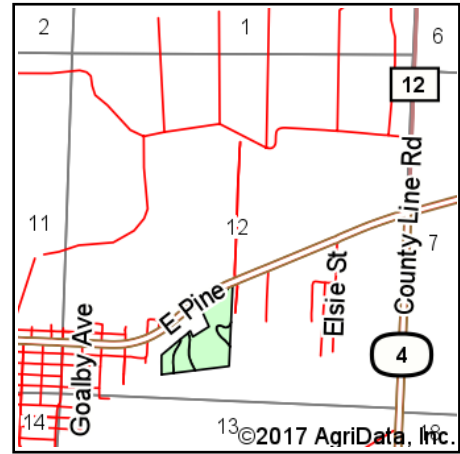


1/23/2017

# Soils Map



Soils data provided by USDA and NRCS.



State: **Illinois**  
 County: **Randolph**  
 Location: **12-6S-5W**  
 Township: **Percy**  
 Acres: **18.77**  
 Date: **1/23/2017**



Maps Provided By:



© AgriData, Inc. 2017

www.AgriDataInc.com



## Area Symbol: IL157, Soil Area Version: 10

Code	Soil Description	Acres	Percent of field	Il. State Productivity Index Legend	Corn Bu/A	Soybeans Bu/A	Wheat Bu/A	Crop productivity index for optimum management
517A	Marine silt loam, 0 to 2 percent slopes	11.94	63.6%		144	45	56	104
**517B	Marine silt loam, 2 to 5 percent slopes	4.04	21.5%		**143	**45	**55	**103
**5C2	Blair silt loam, 5 to 10 percent slopes, eroded	2.79	14.9%		**124	**41	**50	**94
<b>Weighted Average</b>					<b>140.8</b>	<b>44.4</b>	<b>54.9</b>	<b>102.3</b>

Area Symbol: IL157, Soil Area Version: 10

**Table: Optimum Crop Productivity Ratings for Illinois Soil by K.R. Olson and J.M. Lang, Office of Research, ACES, University of Illinois at Champaign-Urbana.** Version: 1/2/2012 Amended Table S2 B811

Crop yields and productivity indices for optimum management (B811) are maintained at the following NRES web site:

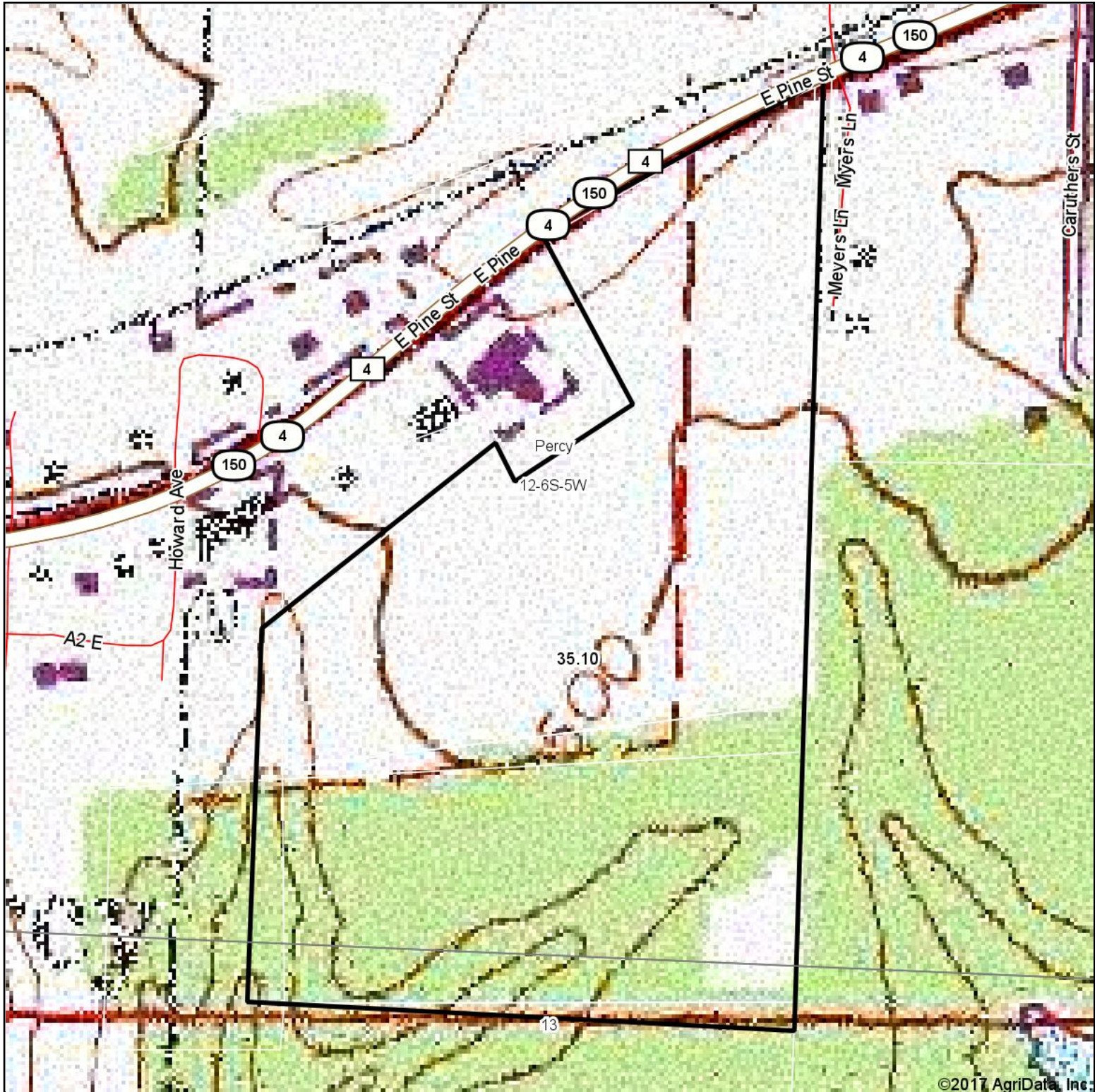
<https://www.ideals.illinois.edu/handle/2142/1027/>

\*\* Indexes adjusted for slope and erosion according to Bulletin 811 Table S3

Soils data provided by USDA and NRCS. Soils data provided by University of Illinois at Champaign-Urbana.

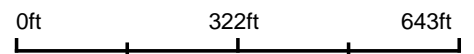
\*c: Using Capabilities Class Dominant Condition Aggregation Method

# Topography Map



©2017 AgriData, Inc.

map center: 38° 0' 59.77, -89° 36' 17.47



**12-6S-5W**  
**Randolph County**  
**Illinois**



1/23/2017