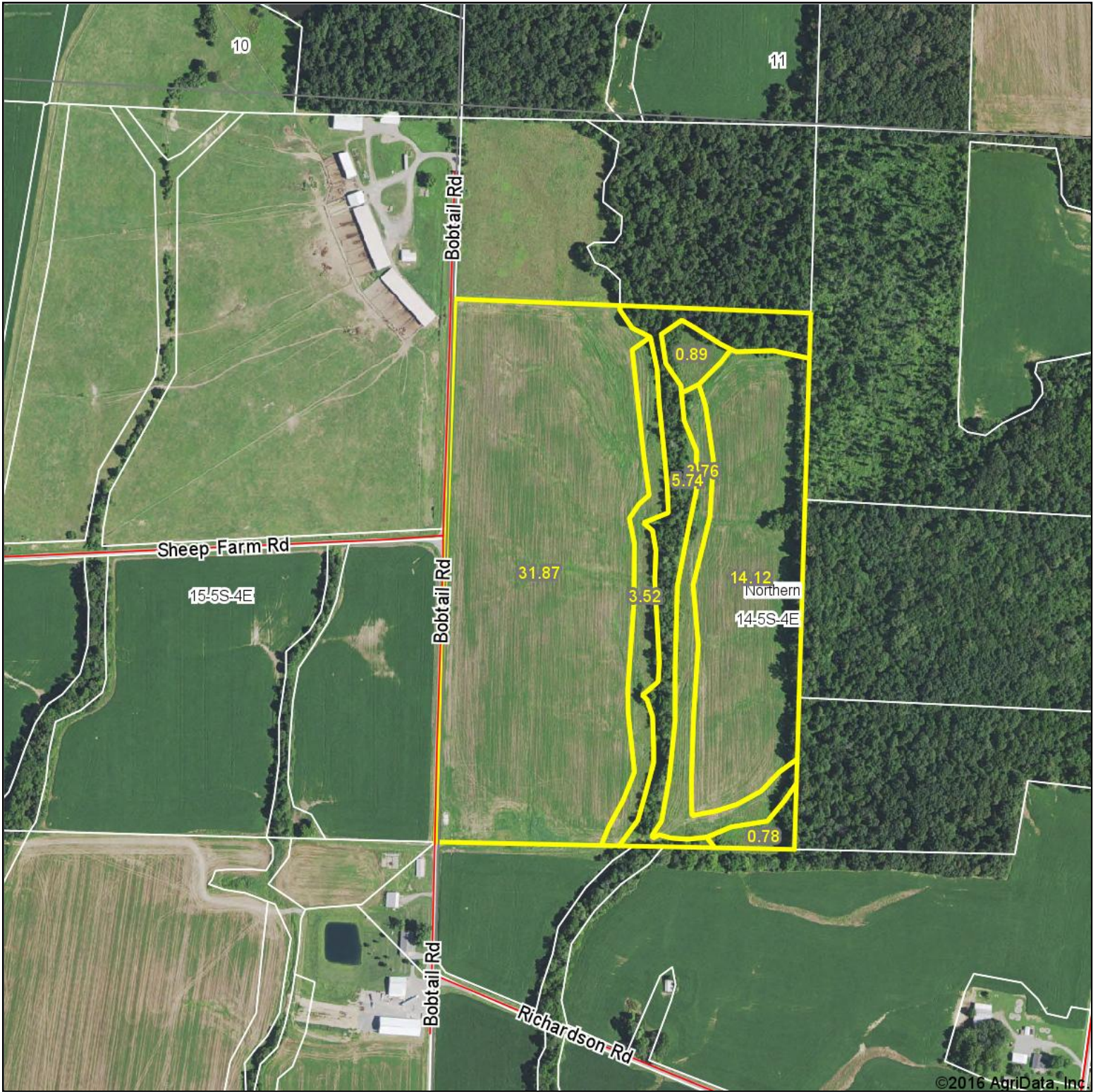
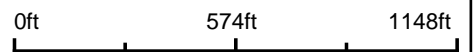


# Aerial Map



map center: 38° 5' 37.44, -88° 44' 25.15



Maps Provided By:



© AgriData, Inc. 2016

www.AgriDataInc.com

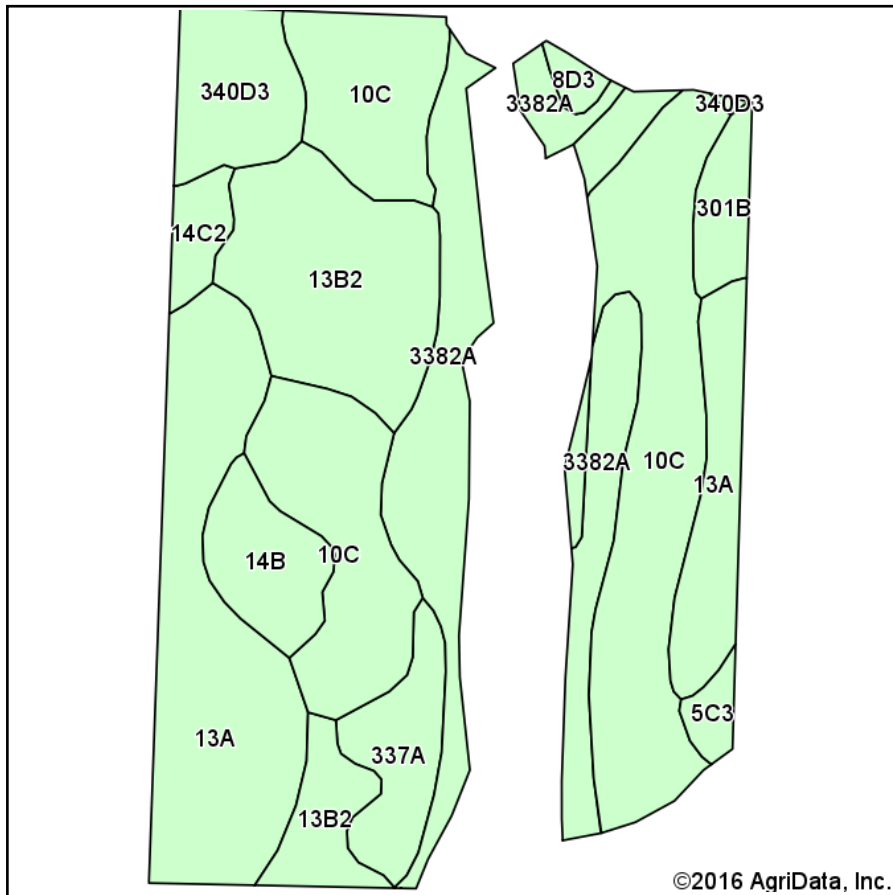
**14-5S-4E**  
**Franklin County**  
**Illinois**



11/30/2016

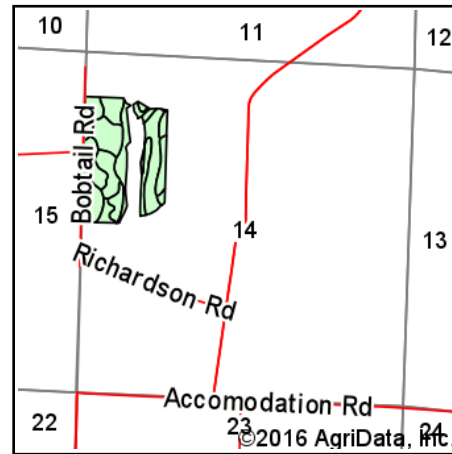


# Soils Map



Soils data provided by USDA and NRCS.

©2016 AgriData, Inc.



State: **Illinois**  
 County: **Franklin**  
 Location: **14-5S-4E**  
 Township: **Northern**  
 Acres: **46.88**  
 Date: **11/30/2016**

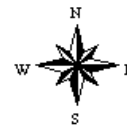


Maps Provided By:



© AgriData, Inc. 2016

www.AgrIDataInc.com



## Area Symbol: IL055, Soil Area Version: 9

Code	Soil Description	Acres	Percent of field	Il. State Productivity Index Legend	Corn Bu/A	Soybeans Bu/A	Wheat Bu/A	Crop productivity index for optimum management
**10C	Plumfield silty clay loam, 5 to 10 percent slopes	14.35	30.6%		**103	**34	**39	**78
13A	Bluford silt loam, 0 to 2 percent slopes	9.46	20.2%		136	44	55	101
3382A	Belknap silt loam, 0 to 2 percent slopes, frequently flooded	7.69	16.4%		156	52	63	117
**13B2	Bluford silt loam, 2 to 5 percent slopes, eroded	6.55	14.0%		**129	**42	**52	**96
**340D3	Zanesville silty clay loam, 10 to 18 percent slopes, severely eroded	2.33	5.0%		**86	**30	**37	**65
337A	Creal silt loam, 0 to 2 percent slopes	2.04	4.4%		151	47	59	110
**14B	Ava silt loam, 2 to 5 percent slopes	1.90	4.1%		**134	**44	**54	**99
**301B	Grantsburg silt loam, 2 to 5 percent slopes	1.01	2.2%		**133	**46	**54	**101
**14C2	Ava silt loam, 5 to 10 percent slopes, eroded	0.78	1.7%		**122	**40	**50	**90
**5C3	Blair silty clay loam, 5 to 10 percent slopes, severely eroded	0.46	1.0%		**102	**33	**41	**77
**8D3	Hickory clay loam, 10 to 18 percent slopes, severely eroded	0.31	0.7%		**98	**33	**40	**75
<b>Weighted Average</b>					<b>125.4</b>	<b>41.2</b>	<b>49.9</b>	<b>93.8</b>

Area Symbol: IL055, Soil Area Version: 9

**Table: Optimum Crop Productivity Ratings for Illinois Soil by K.R. Olson and J.M. Lang, Office of Research, ACES, University of Illinois at Champaign-Urbana.** Version: 1/2/2012 Amended Table S2 B811

Crop yields and productivity indices for optimum management (B811) are maintained at the following NRES web site:

<https://www.ideals.illinois.edu/handle/2142/1027/>

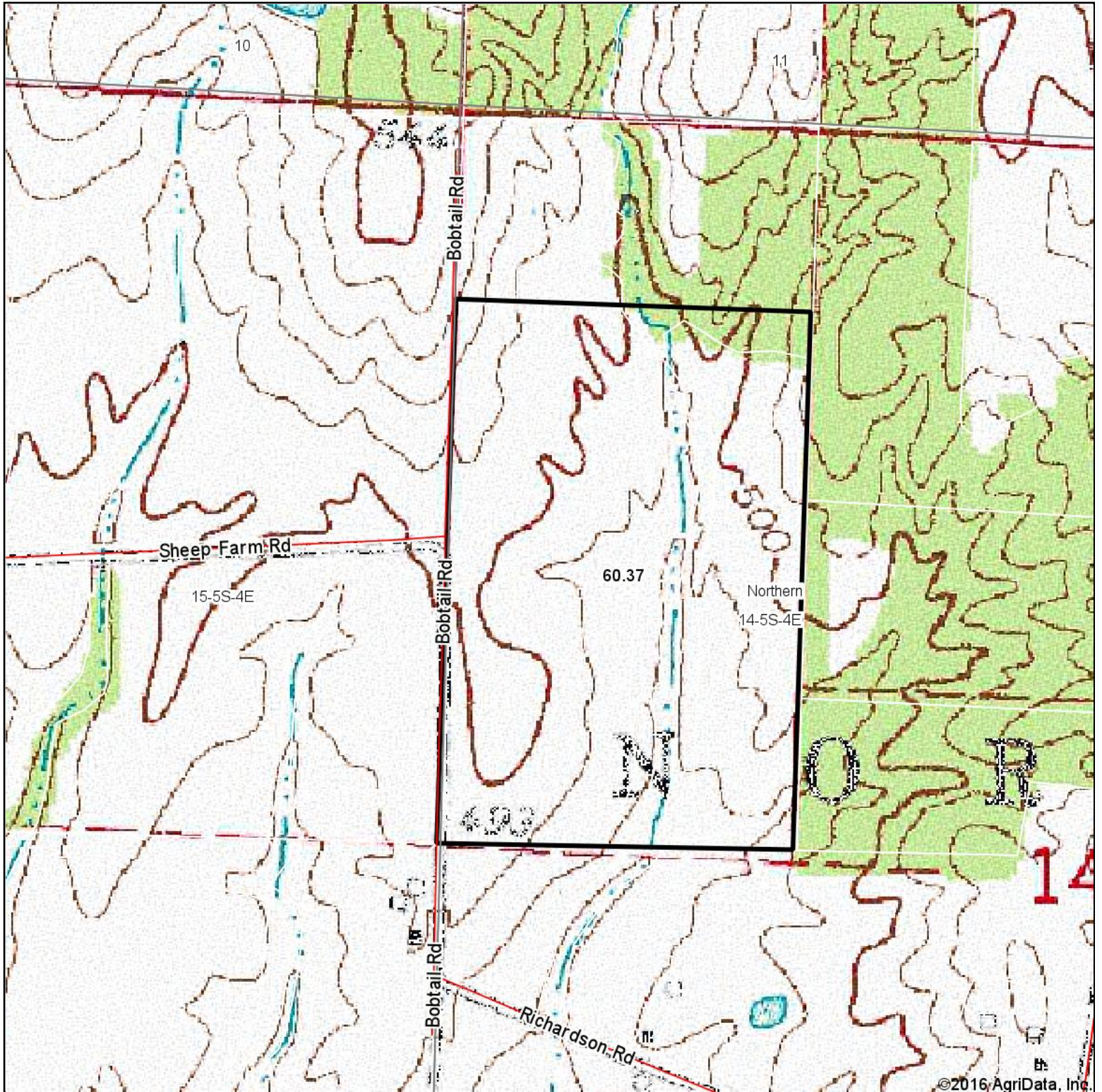
\*\* Indexes adjusted for slope and erosion according to Bulletin 811 Table S3

Soils data provided by USDA and NRCS. Soils data provided by University of Illinois at Champaign-Urbana.

\*c: Using Capabilities Class Dominant Condition Aggregation Method



# Topography Map



©2016, AgriData, Inc.

map center: 38° 5' 37.44, -88° 44' 25.15

0ft 574ft 1148ft



Maps Provided By:



© AgriData, Inc. 2016

www.AgriDataInc.com

**14-5S-4E**  
**Franklin County**  
**Illinois**



11/30/2016