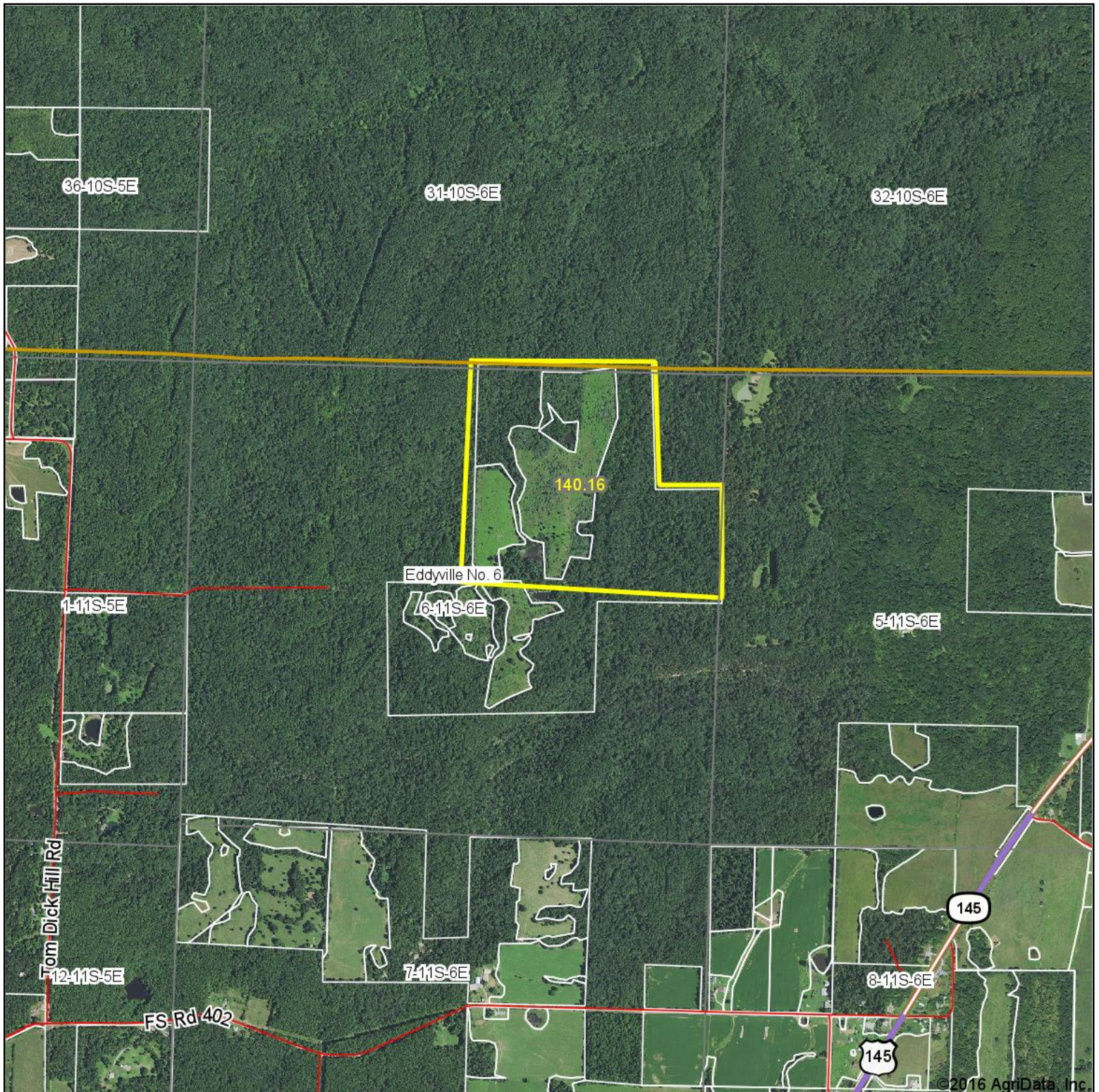


# Aerial Map



©2016 AgriData, Inc.



map center: 37° 35' 37.09, -88° 35' 6.89

0ft 1709ft 3419ft

Maps Provided By:  
**surety**  
CUSTOMIZED ONLINE MAPPING  
© AgriData, Inc. 2016 www.AgriDataInc.com

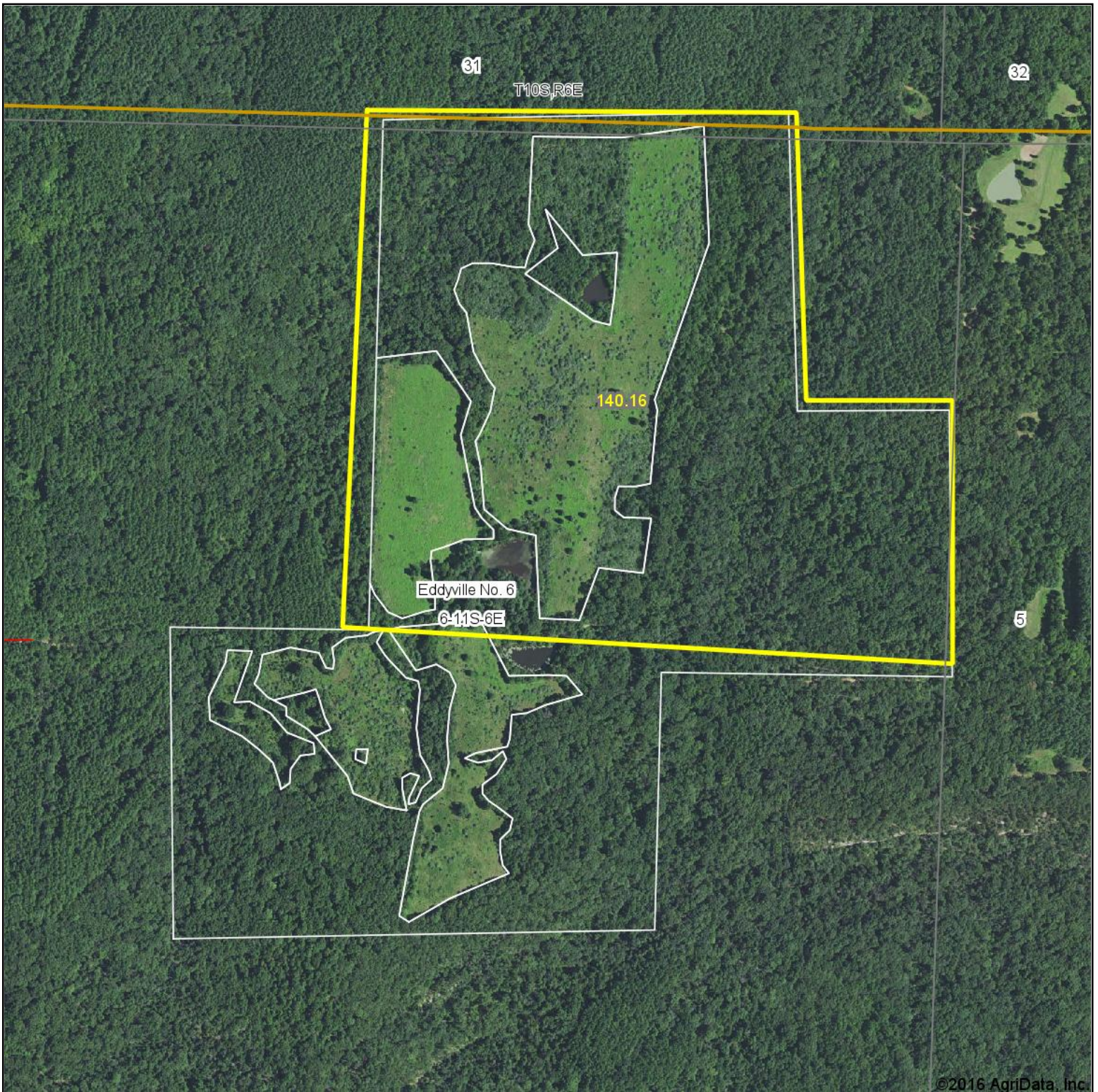
**6-11S-6E**  
**Pope County**  
**Illinois**



11/17/2016



# Aerial Map



map center: 37° 35' 37.09, -88° 35' 6.9

0ft 735ft 1470ft



Maps Provided By:



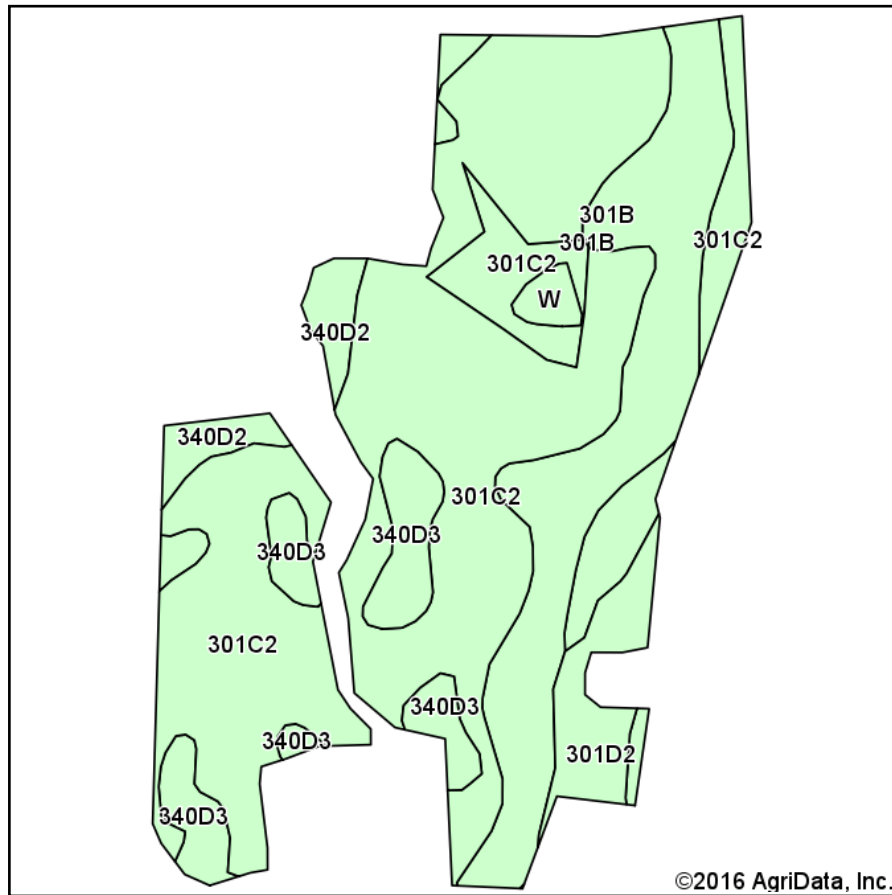
**6-11S-6E**  
**Pope County**  
**Illinois**



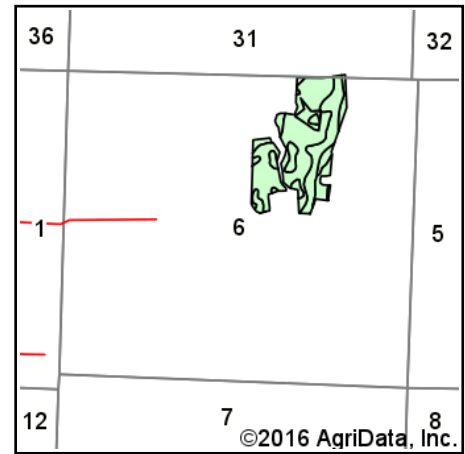
11/17/2016



# Soils Map



Soils data provided by USDA and NRCS.



State: **Illinois**  
 County: **Pope**  
 Location: **6-11S-6E**  
 Township: **Eddyville No. 6**  
 Acres: **51.01**  
 Date: **11/17/2016**



## Area Symbol: IL151, Soil Area Version: 8

Code	Soil Description	Acres	Percent of field	Il. State Productivity Index Legend	Corn Bu/A	Soybeans Bu/A	Wheat Bu/A	Grass-legume e hay, T/A	Crop productivity index for optimum management
**301C2	Grantsburg silt loam, 5 to 10 percent slopes, eroded	31.59	61.9%		**121	**41	**50	0.00	**92
**301B	Grantsburg silt loam, 2 to 5 percent slopes	10.02	19.6%		**133	**46	**54	0.00	**101
**340D3	Zanesville silt loam, 10 to 18 percent slopes, severely eroded	4.30	8.4%		**86	**30	**37	**2.68	**65
**301D2	Grantsburg silt loam, 10 to 18 percent slopes, eroded	2.30	4.5%		**113	**39	**46	0.00	**86
**340D2	Zanesville silt loam, 10 to 18 percent slopes, eroded	2.30	4.5%		**104	**36	**45	**3.27	**79
W	Water	0.50	1.0%						
<b>Weighted Average</b>					<b>118.1</b>	<b>40.3</b>	<b>48.8</b>	<b>0.37</b>	<b>89.7</b>

Area Symbol: IL151, Soil Area Version: 8

**Table: Optimum Crop Productivity Ratings for Illinois Soil by K.R. Olson and J.M. Lang, Office of Research, ACES, University of Illinois at Champaign-Urbana.** Version: 1/2/2012 Amended Table S2 B811

Crop yields and productivity indices for optimum management (B811) are maintained at the following NRES web site:

<https://www.ideals.illinois.edu/handle/2142/1027/>

\*\* Indexes adjusted for slope and erosion according to Bulletin 811 Table S3

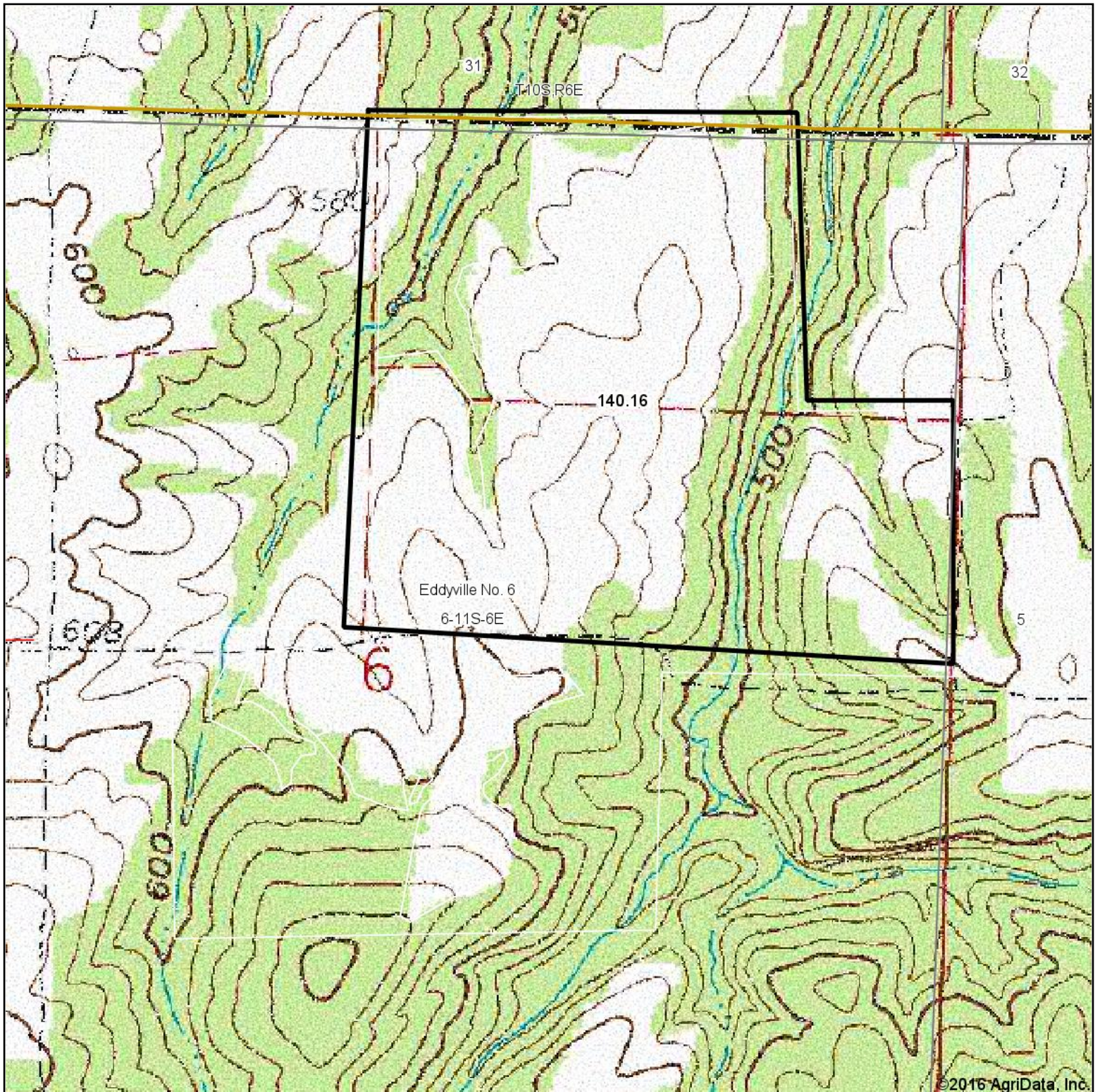
e Soils in the well drained group were not rated for grass-legume and are shown with a zero "0".

Soils data provided by USDA and NRCS. Soils data provided by University of Illinois at Champaign-Urbana.

\*c: Using Capabilities Class Dominant Condition Aggregation Method



# Topography Map



map center: 37° 35' 37.09, -88° 35' 6.9

0ft 735ft 1470ft



Maps Provided By:



© AgriData, Inc. 2016

www.AgriDataInc.com

6-11S-6E  
Pope County  
Illinois



11/17/2016