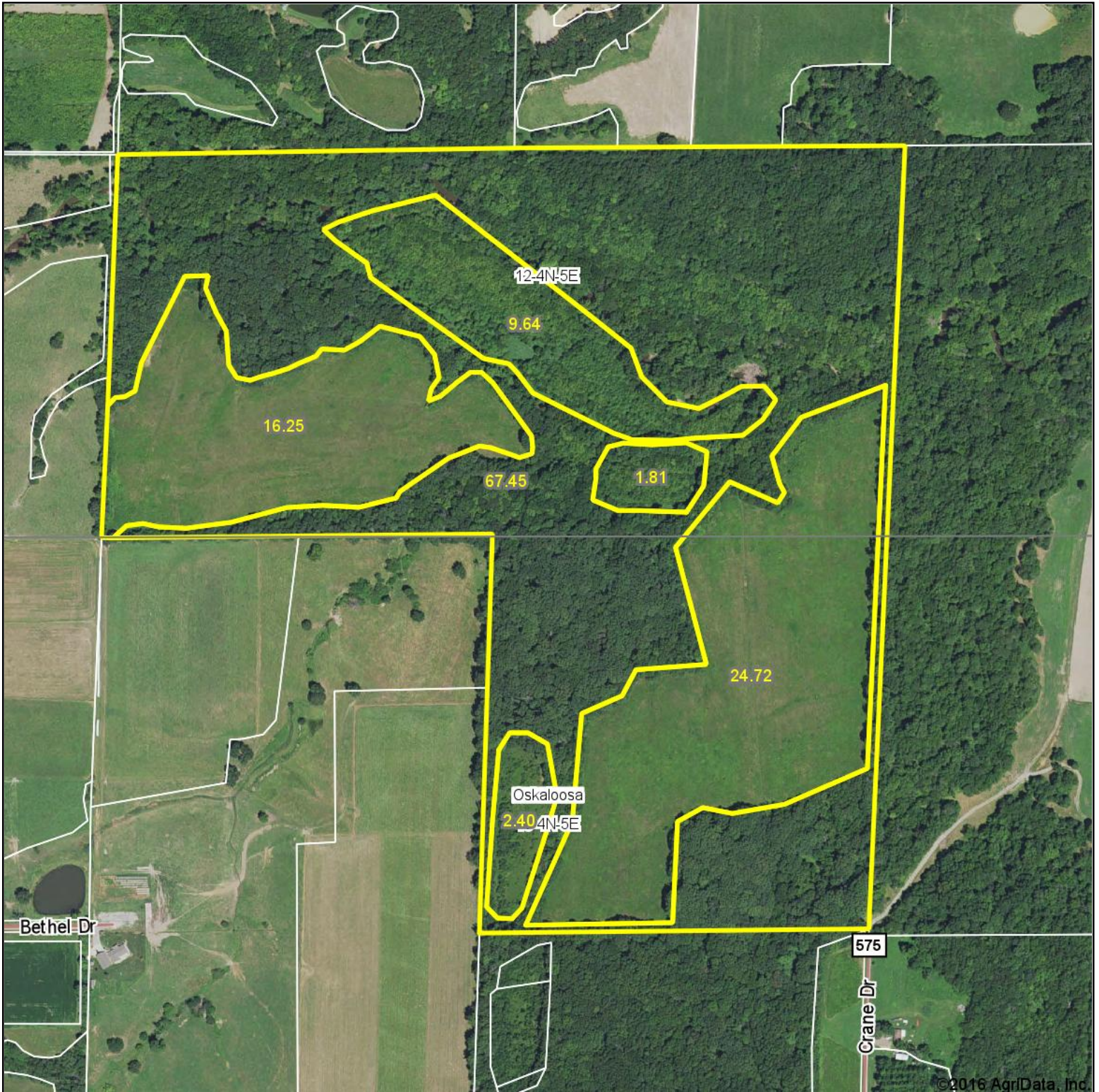
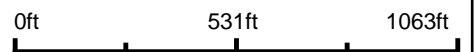


Aerial Map



©2016 AgriData, Inc.

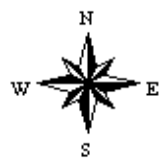
map center: 38° 47' 51.89, -88° 35' 27.23



Maps Provided By:

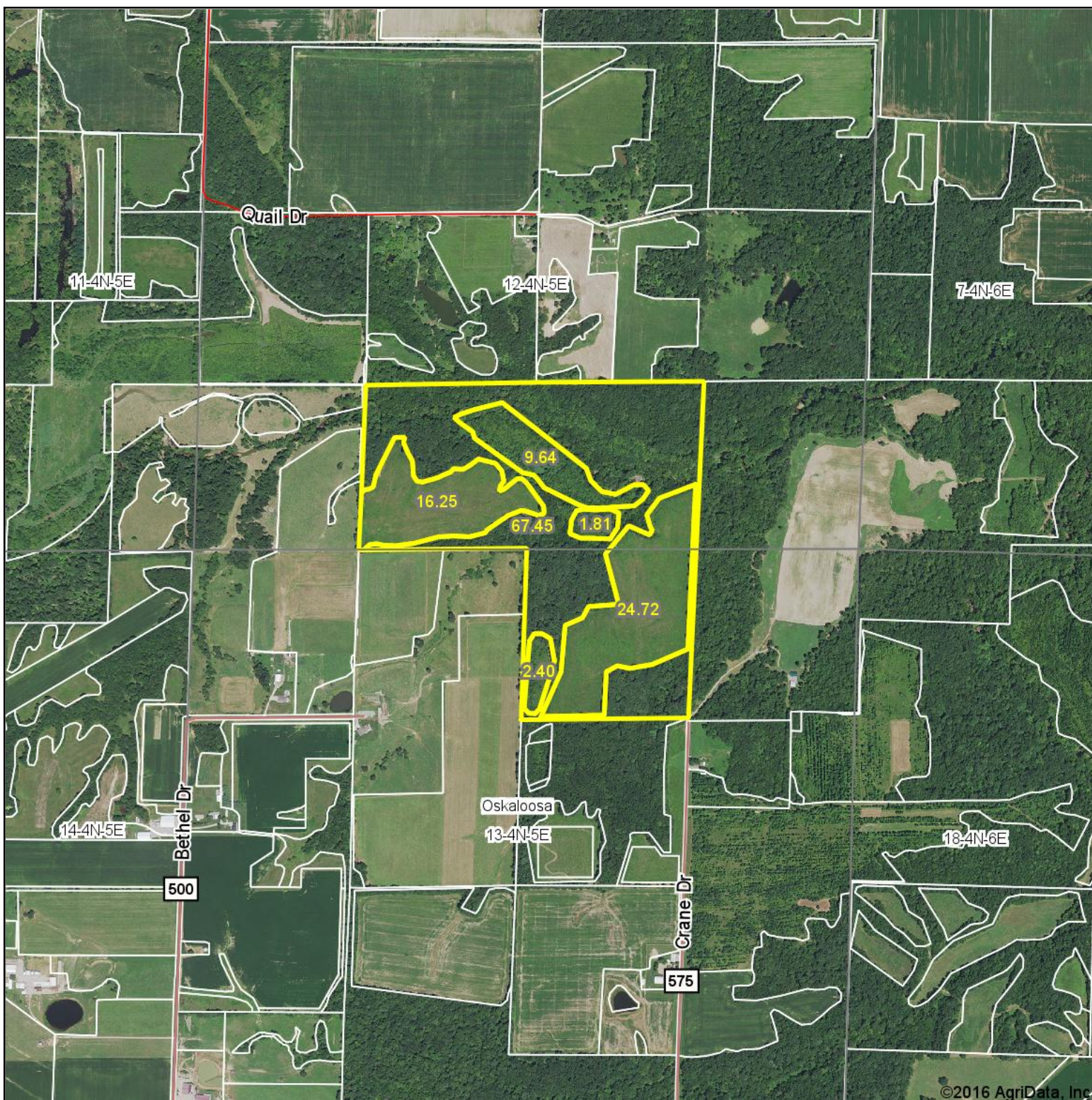


13-4N-5E
Clay County
Illinois

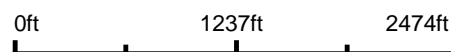


10/24/2016

Aerial Map

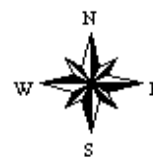


map center: 38° 47' 51.89, -88° 35' 27.23



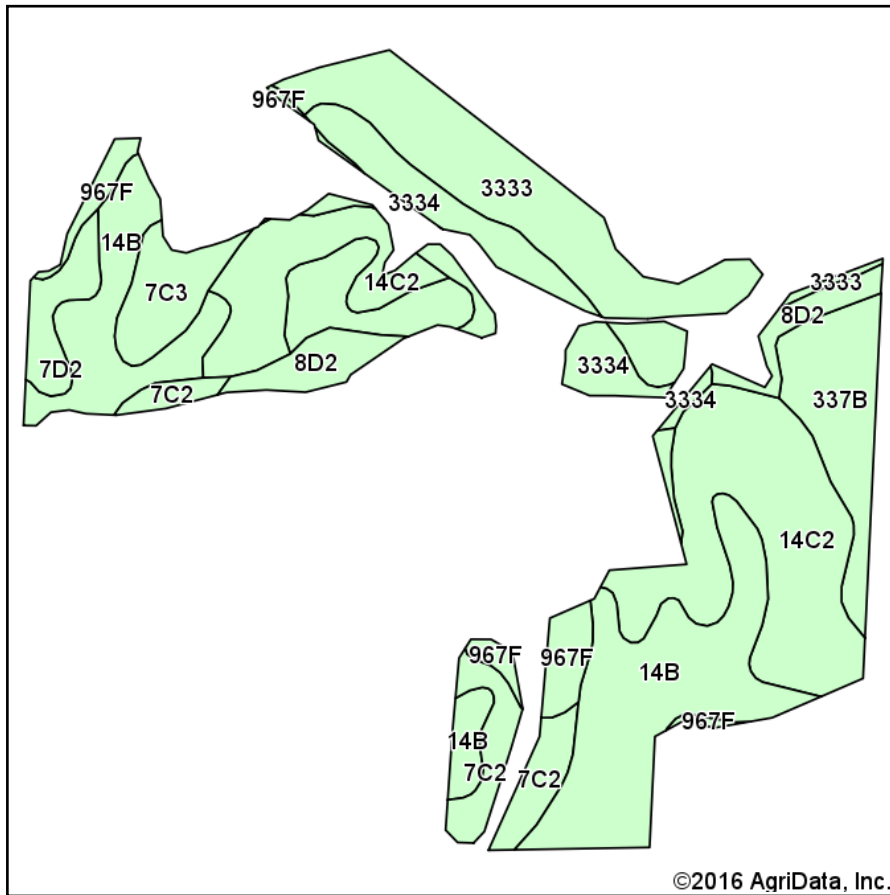
Maps Provided By:
surety
 CUSTOMIZED ONLINE MAPPING
 © AgriData, Inc. 2016 www.AgriDataInc.com

13-4N-5E
Clay County
Illinois

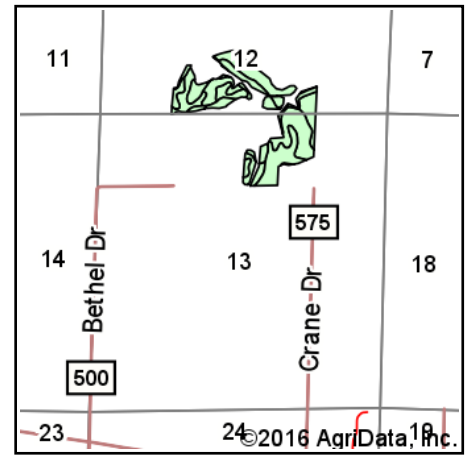


10/24/2016

Soils Map



Soils data provided by USDA and NRCS.



State: **Illinois**
 County: **Clay**
 Location: **13-4N-5E**
 Township: **Oskaloosa**
 Acres: **54.82**
 Date: **10/24/2016**



Area Symbol: IL025, Soil Area Version: 10

Code	Soil Description	Acres	Percent of field	Il. State Productivity Index Legend	Corn Bu/A	Soybeans Bu/A	Wheat Bu/A	Grass-legume e hay, T/A	Crop productivity index for optimum management
**14B	Ava silt loam, 2 to 5 percent slopes	14.88	27.1%		**134	**44	**54	0.00	**99
**14C2	Ava silt loam, 5 to 10 percent slopes, eroded	12.89	23.5%		**122	**40	**50	0.00	**90
3333	Wakeland silt loam, frequently flooded	8.07	14.7%		174	56	68	5.14	128
**337B	Creal silt loam, 2 to 5 percent slopes	3.81	7.0%		**149	**47	**58	0.00	**109
3334	Birds silt loam, frequently flooded	3.61	6.6%		157	51	61	0.00	117
**7C2	Atlas silt loam, 5 to 10 percent slopes, eroded	3.00	5.5%		**105	**37	**41	**3.16	**81
**967F	Hickory-Gosport complex, 18 to 35 percent slopes	2.79	5.1%		**80	**27	**33	**2.59	**61
**8D2	Hickory silt loam, 10 to 18 percent slopes, eroded	2.32	4.2%		**108	**36	**44	0.00	**82
**7C3	Atlas silty clay loam, 5 to 10 percent slopes, severely eroded	2.03	3.7%		**87	**30	**34	**2.60	**67
**7D2	Atlas silt loam, 10 to 18 percent slopes, eroded	1.42	2.6%		**98	**34	**39	**2.95	**76
Weighted Average					131.5	43.1	52.5	1.23	97.6

Area Symbol: IL025, Soil Area Version: 10

Table: Optimum Crop Productivity Ratings for Illinois Soil by K.R. Olson and J.M. Lang, Office of Research, ACES, University of Illinois at Champaign-Urbana. Version: 1/2/2012 Amended Table S2 B811

Crop yields and productivity indices for optimum management (B811) are maintained at the following NRES web site:

<https://www.ideals.illinois.edu/handle/2142/1027/>

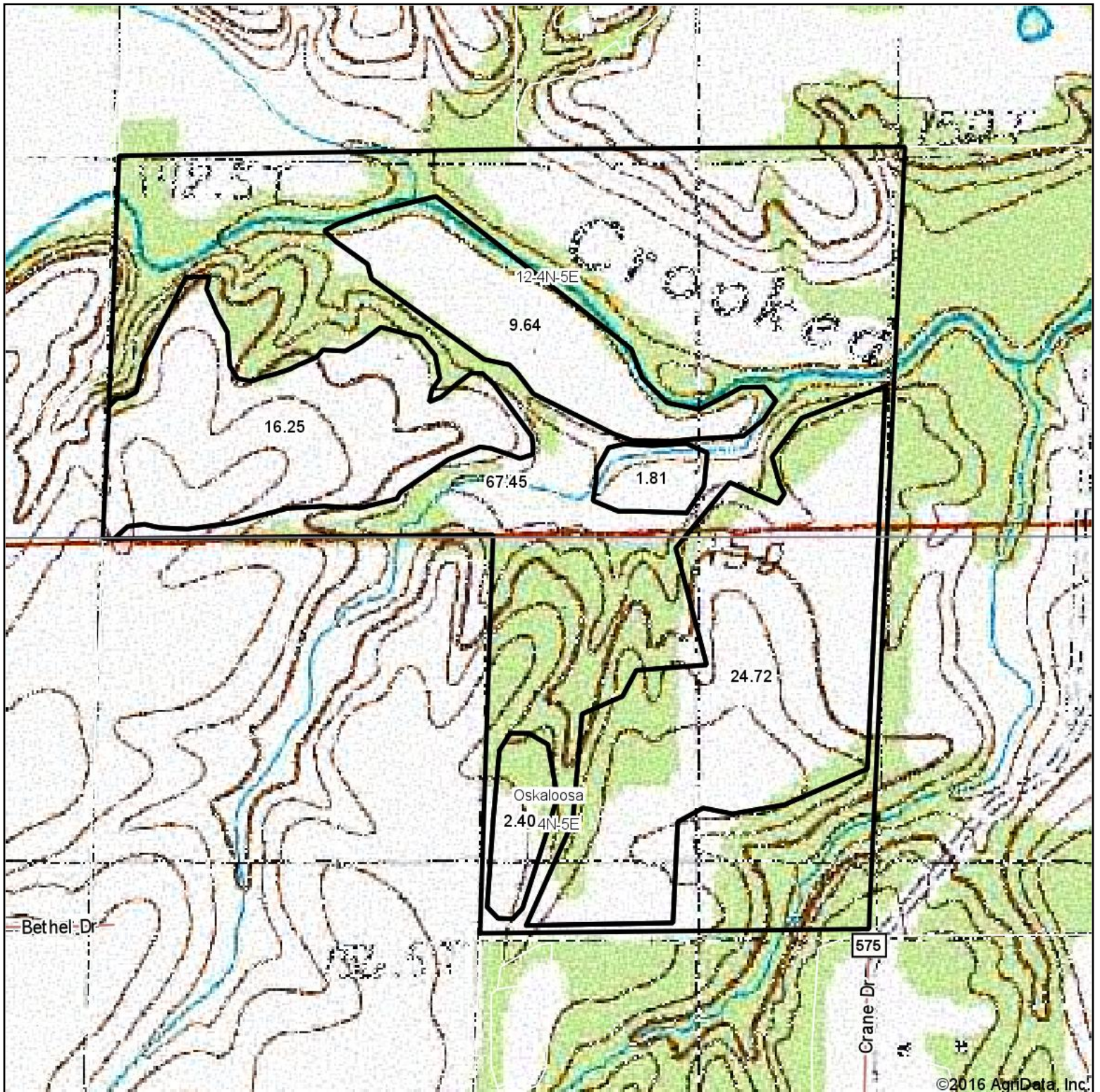
** Indexes adjusted for slope and erosion according to Bulletin 811 Table S3

e Soils in the well drained group were not rated for grass-legume and are shown with a zero "0".

Soils data provided by USDA and NRCS. Soils data provided by University of Illinois at Champaign-Urbana.

*c: Using Capabilities Class Dominant Condition Aggregation Method

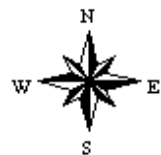
Topography Map



map center: 38° 47' 51.89, -88° 35' 27.23

0ft 531ft 1063ft

13-4N-5E
Clay County
Illinois



10/24/2016



Maps Provided By:



© AgriData, Inc. 2016

www.AgriDataInc.com