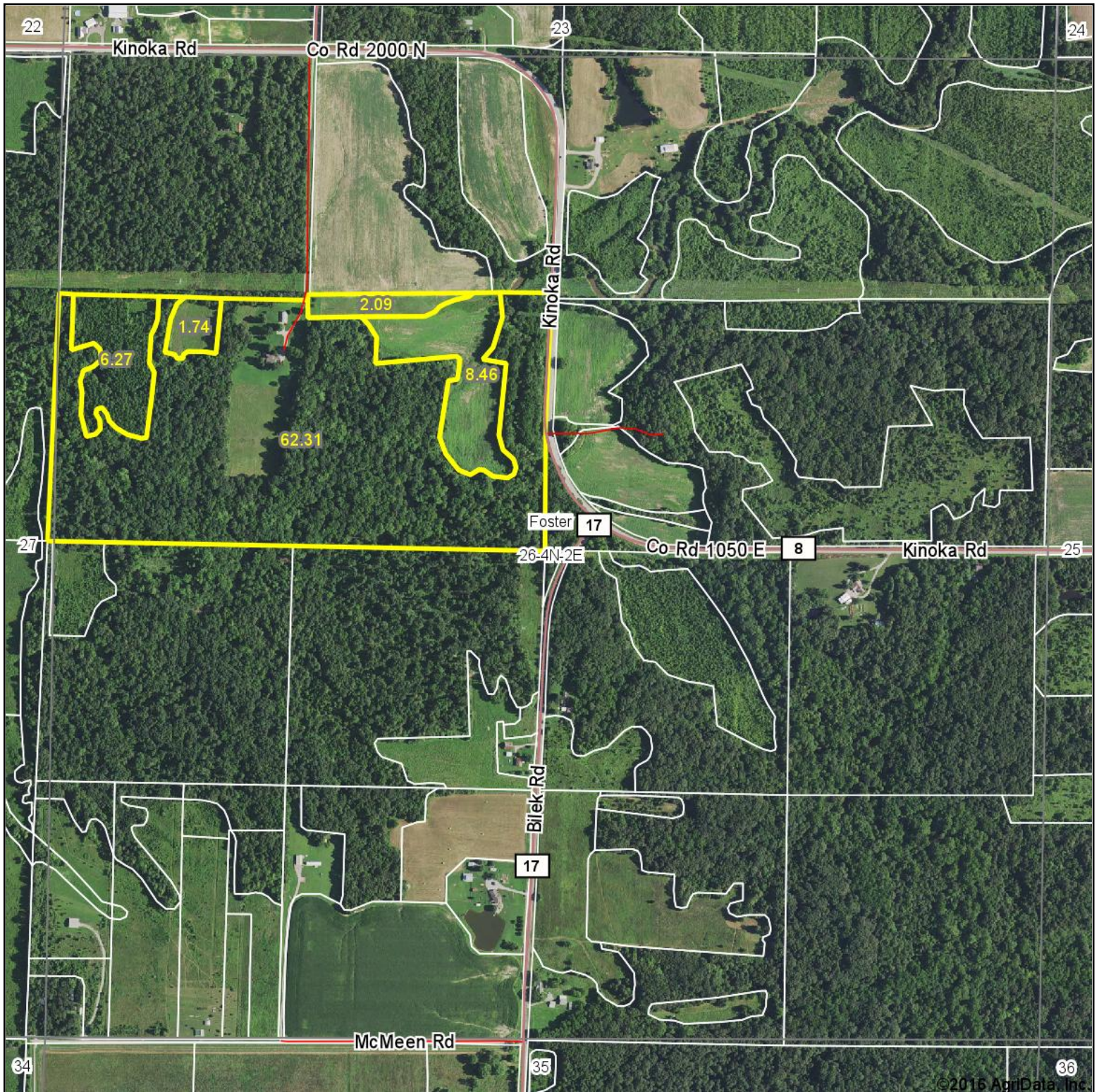


Aerial Map



©2016 AgriData, Inc.



map center: 38° 45' 29.89, -88° 56' 57.06

0ft 827ft 1654ft

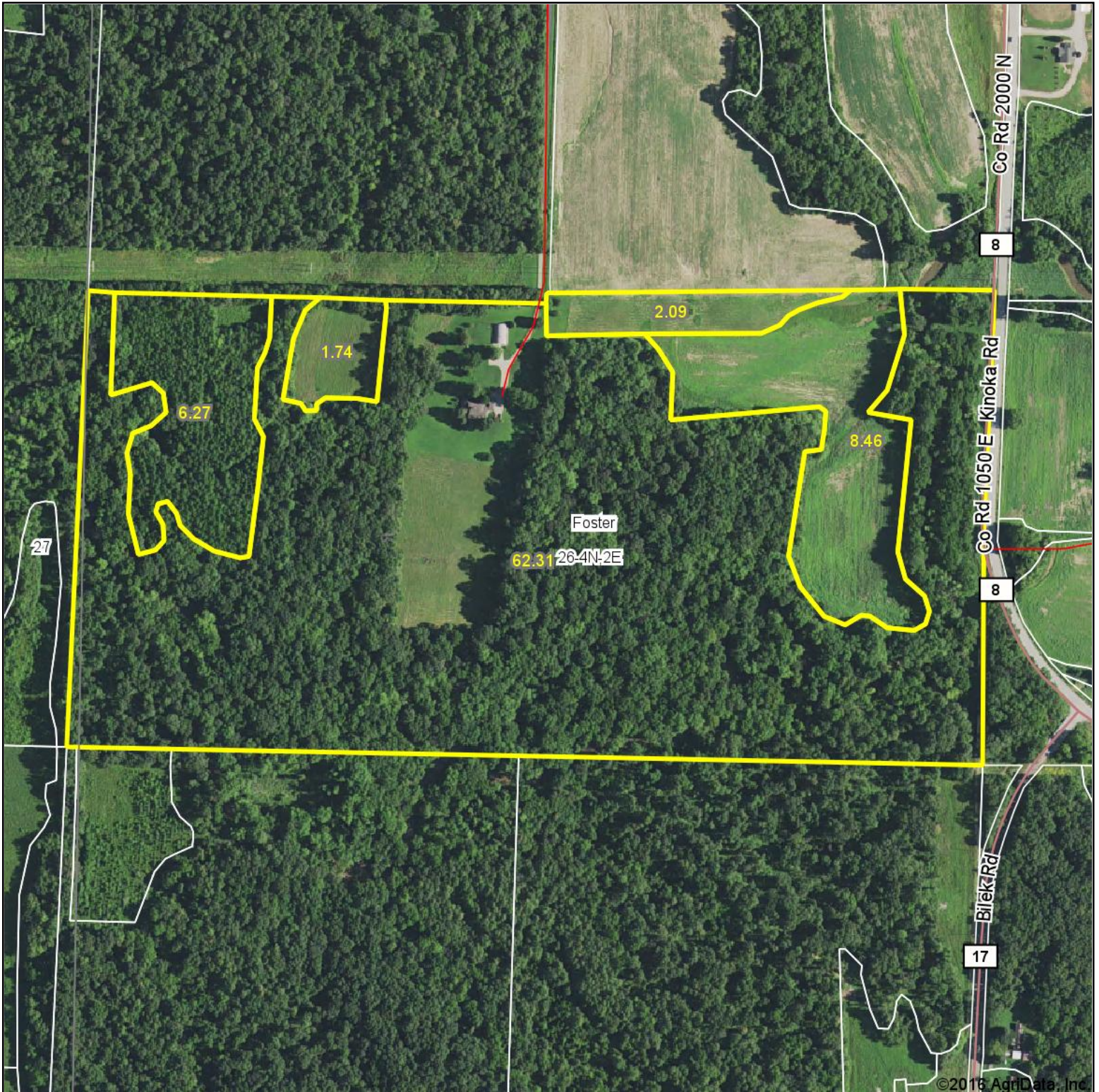
Maps Provided By:
surety
CUSTOMIZED ONLINE MAPPING
© AgriData, Inc. 2016 www.AgriDataInc.com

26-4N-2E
Marion County
Illinois



10/4/2016

Aerial Map



map center: 38° 45' 35.71, -88° 57' 13.36

0ft 449ft 899ft



Maps Provided By:



© AgriData, Inc. 2016

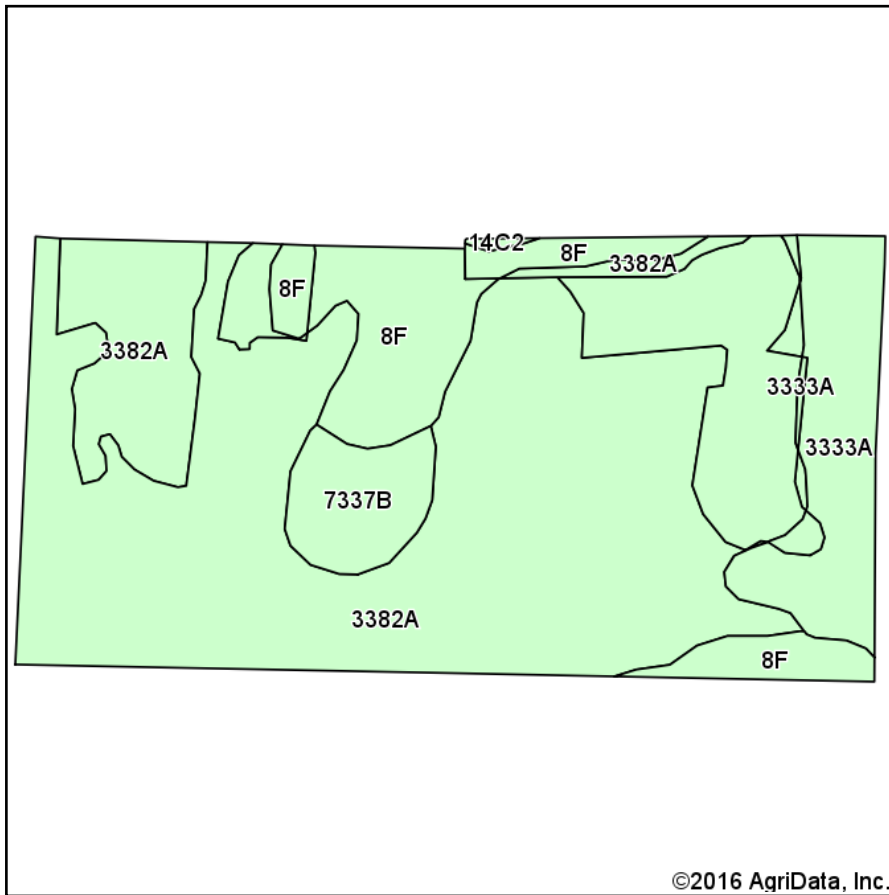
www.AgriDataInc.com

26-4N-2E
Marion County
Illinois

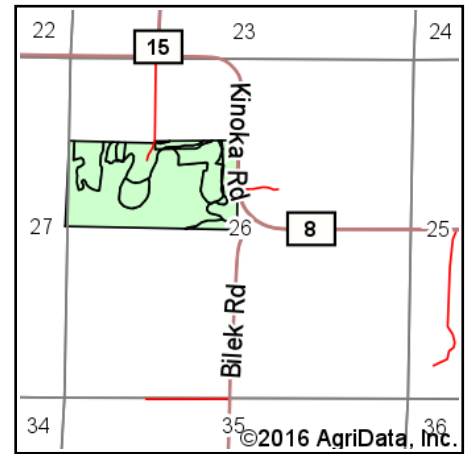


10/4/2016

Soils Map



Soils data provided by USDA and NRCS.



State: **Illinois**
 County: **Marion**
 Location: **26-4N-2E**
 Township: **Foster**
 Acres: **80.87**
 Date: **10/4/2016**



Maps Provided By:



© AgriData, Inc. 2016

www.AgriDataInc.com



Area Symbol: IL121, Soil Area Version: 12

Code	Soil Description	Acres	Percent of field	Il. State Productivity Index Legend	Corn Bu/A	Soybeans Bu/A	Wheat Bu/A	Grass-legume e hay, T/A	Crop productivity index for optimum management
3382A	Belknap silt loam, 0 to 2 percent slopes, frequently flooded	59.65	73.8%		156	52	63	4.89	117
**8F	Hickory silt loam, 18 to 35 percent slopes	9.41	11.6%		**86	**29	**35	0.00	**65
3333A	Wakeland silt loam, 0 to 2 percent slopes, frequently flooded	7.96	9.8%		174	56	68	5.14	128
7337B	Creal silt loam, 2 to 5 percent slopes, rarely flooded	3.73	4.6%		151	47	59	0.00	110
**14C2	Ava silt loam, 5 to 10 percent slopes, eroded	0.12	0.1%		**122	**40	**50	0.00	**90
Weighted Average					149.3	49.5	60	4.11	111.7

Area Symbol: IL121, Soil Area Version: 12

Table: Optimum Crop Productivity Ratings for Illinois Soil by K.R. Olson and J.M. Lang, Office of Research, ACES, University of Illinois at Champaign-Urbana. Version: 1/2/2012 Amended Table S2 B811

Crop yields and productivity indices for optimum management (B811) are maintained at the following NRES web site:

<https://www.ideals.illinois.edu/handle/2142/1027/>

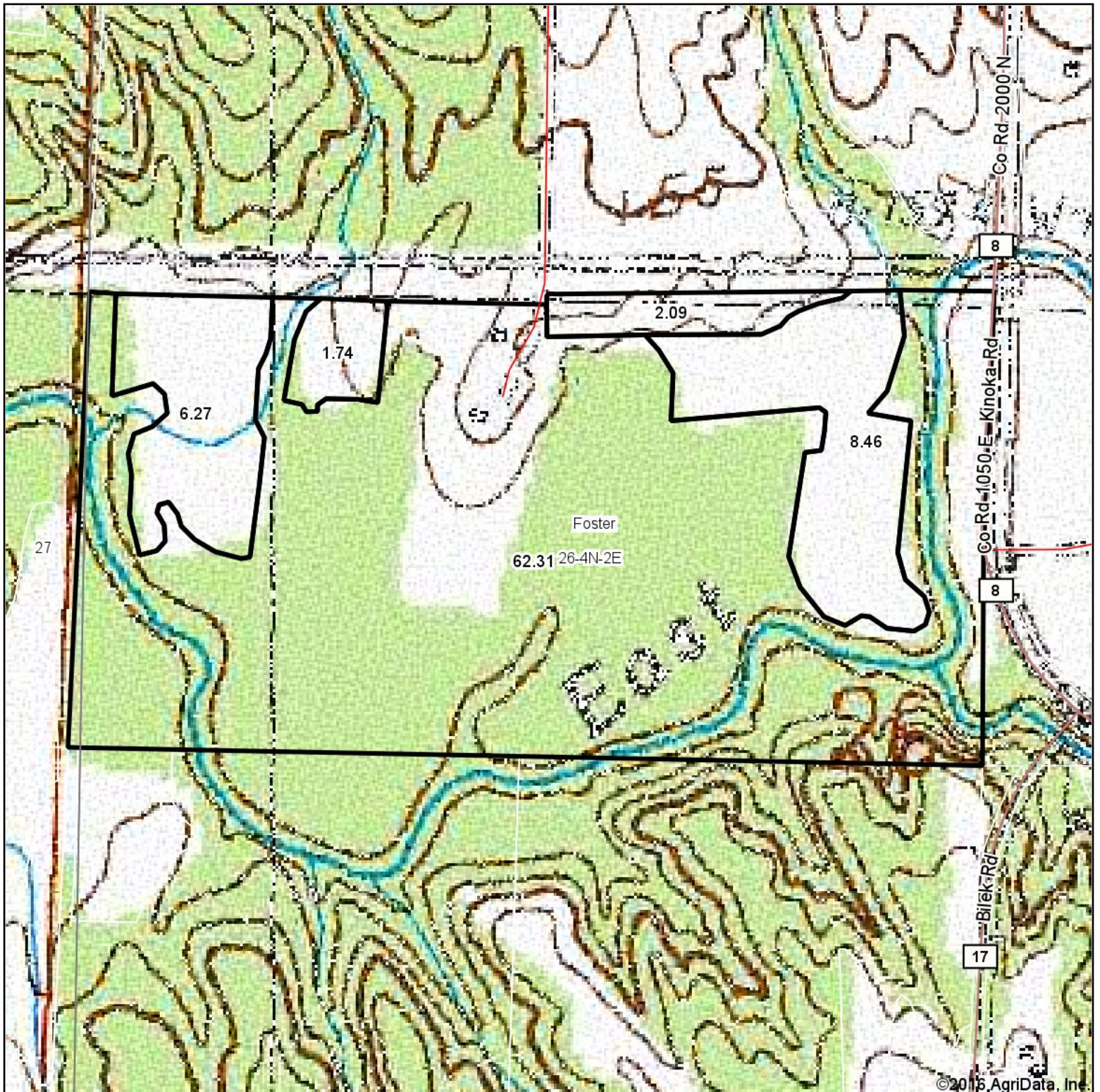
** Indexes adjusted for slope and erosion according to Bulletin 811 Table S3

e Soils in the well drained group were not rated for grass-legume and are shown with a zero "0".

Soils data provided by USDA and NRCS. Soils data provided by University of Illinois at Champaign-Urbana.

*c: Using Capabilities Class Dominant Condition Aggregation Method

Topography Map



map center: 38° 45' 35.71, -88° 57' 13.36

0ft 449ft 899ft



Maps Provided By:



© AgriData, Inc. 2016

www.AgriDataInc.com

26-4N-2E
Marion County
Illinois



10/4/2016