

Aerial Map



map center: 40° 40' 41.04, -89° 40' 20.49

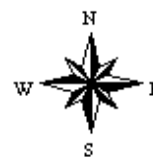
0ft 387ft 774ft



Maps Provided By:

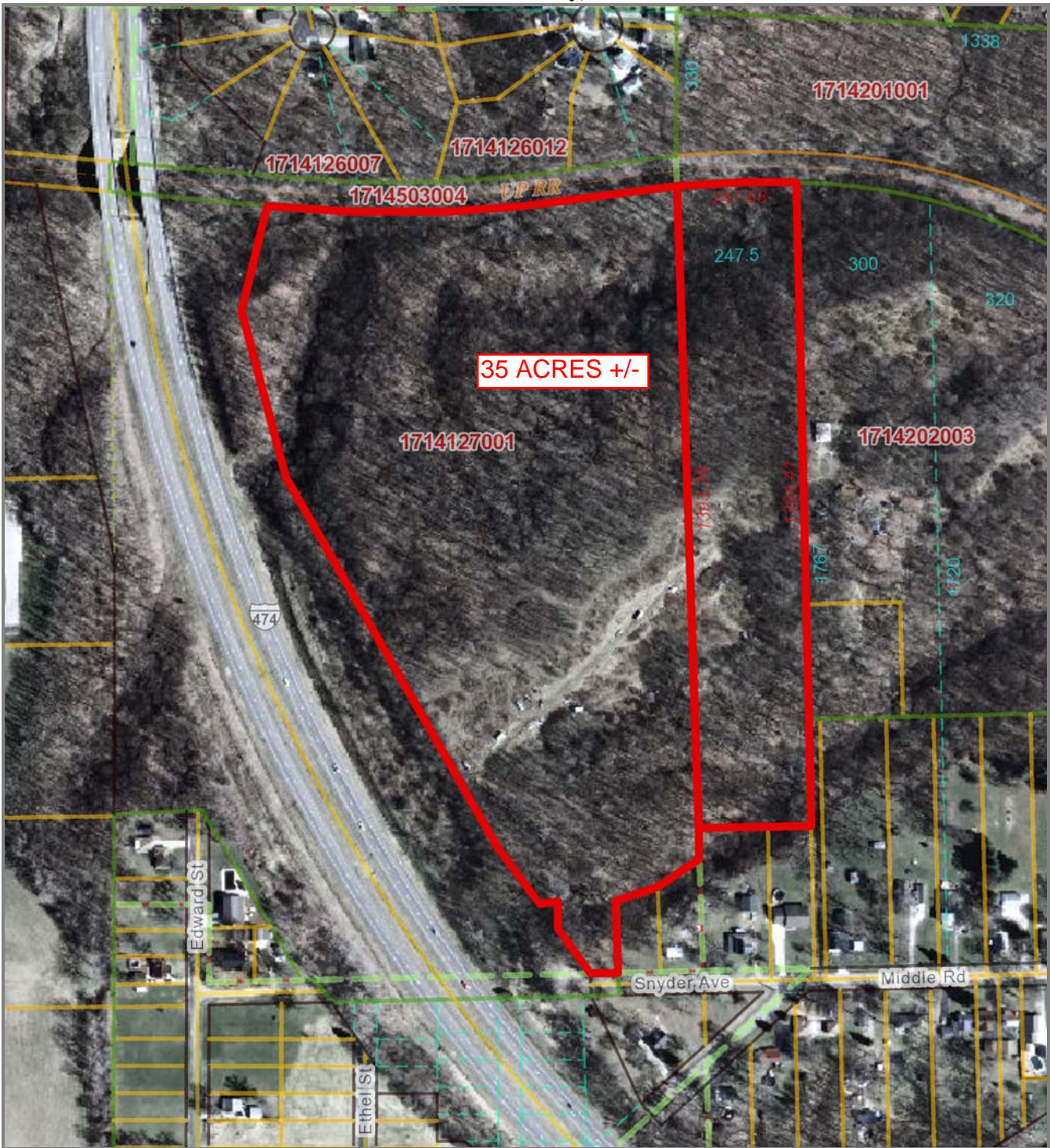


14-8N-7E
Peoria County
Illinois



10/11/2016

Peoria County, IL



1	1714127001	2	1714202001 4837 W MIDDLE RD
---	------------	---	--------------------------------

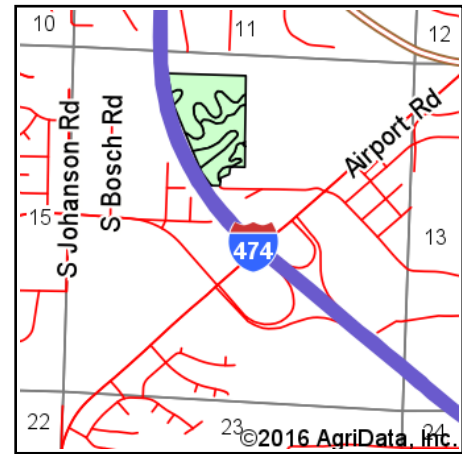
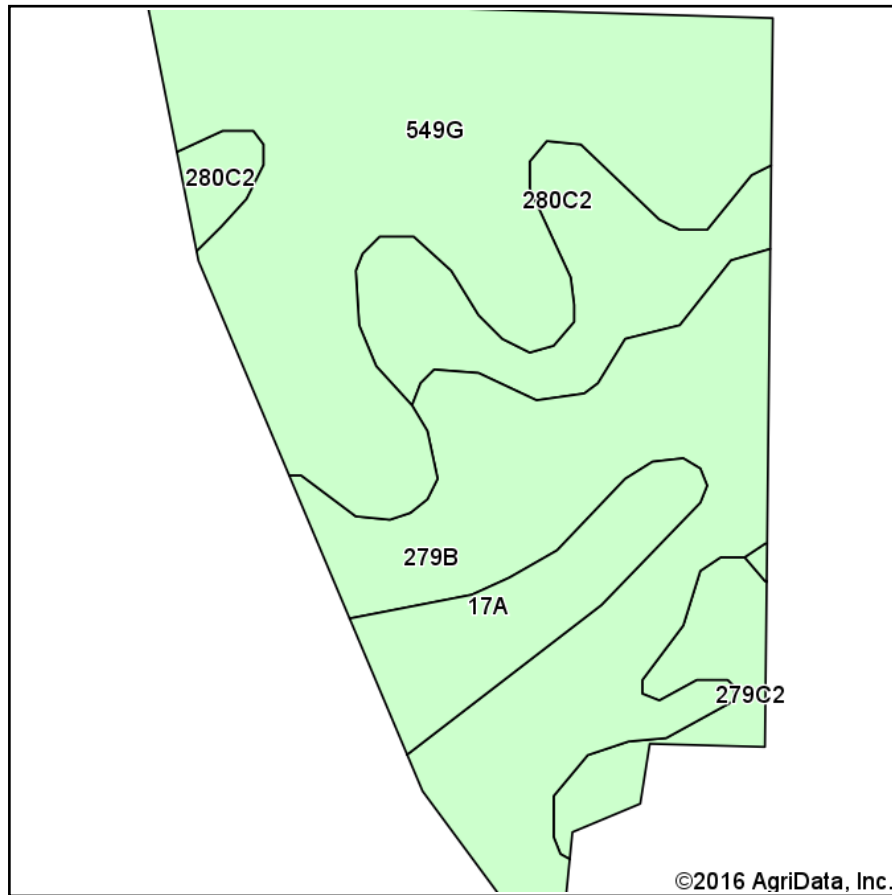


Disclaimer: Data is provided 'as is' without warranty or any representation of accuracy, timeliness or completeness. The burden for determining fitness for, or the appropriateness for use, rests solely on the requester. The requester acknowledges and accepts the limitations of the Data, including the fact that the Data is in a constant state of maintenance. This website is NOT intended to be used for legal litigation or boundary disputes and is informational only. -Peoria County GIS Division

Map Scale
1 inch = 333 feet
10/11/2016



Soils Map



State: **Illinois**
 County: **Peoria**
 Location: **14-8N-7E**
 Township: **Limestone**
 Acres: **34.04**
 Date: **10/11/2016**



Maps Provided By:

 © AgriData, Inc. 2016 www.AgriDataInc.com



Area Symbol: IL143, Soil Area Version: 10

Code	Soil Description	Acres	Percent of field	Il. State Productivity Index Legend	Corn Bu/A	Soybeans Bu/A	Wheat Bu/A	Grass-legume e hay, T/A	Crop productivity index for optimum management
**549G	Marseilles silt loam, 35 to 60 percent slopes	14.40	42.3%		**65	**21	**26	0.00	**48
**279B	Rozetta silt loam, 2 to 5 percent slopes	10.42	30.6%		**162	**50	**64	0.00	**119
**280C2	Fayette silt loam, 5 to 10 percent slopes, eroded	4.60	13.5%		**155	**49	**61	0.00	**113
17A	Keomah silt loam, 0 to 2 percent slopes	2.84	8.3%		161	51	65	5.14	119
**279C2	Rozetta silt loam, 5 to 10 percent slopes, eroded	1.78	5.2%		**153	**47	**60	0.00	**112
Weighted Average					119.5	37.5	47.4	0.43	87.8

Area Symbol: IL143, Soil Area Version: 10

Table: Optimum Crop Productivity Ratings for Illinois Soil by K.R. Olson and J.M. Lang, Office of Research, ACES, University of Illinois at Champaign-Urbana. Version: 1/2/2012 Amended Table S2 B811

Crop yields and productivity indices for optimum management (B811) are maintained at the following NRES web site:
<https://www.ideals.illinois.edu/handle/2142/1027/>

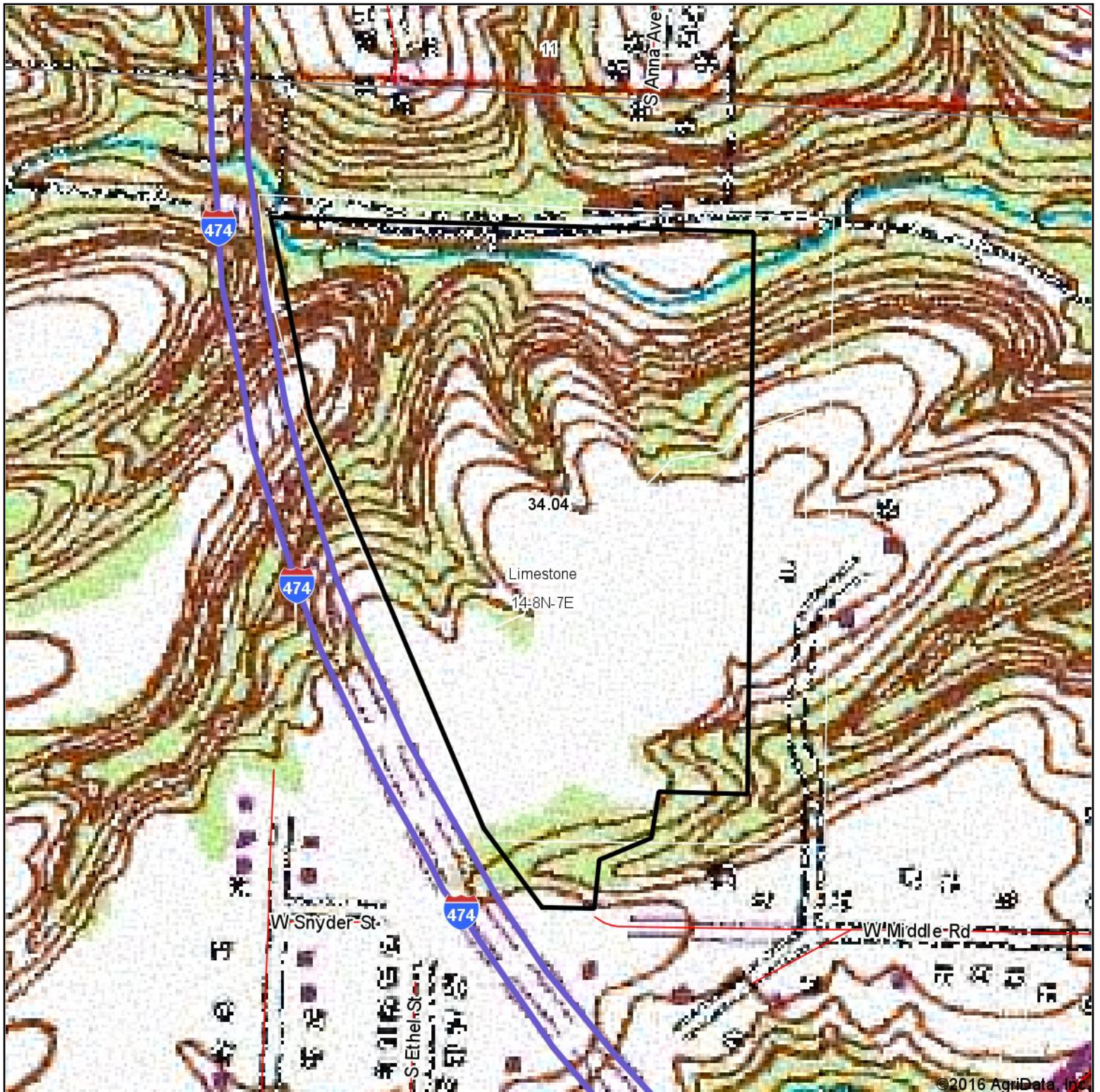
** Indexes adjusted for slope and erosion according to Bulletin 811 Table S3

e Soils in the well drained group were not rated for grass-legume and are shown with a zero "0".

Soils data provided by USDA and NRCS. Soils data provided by University of Illinois at Champaign-Urbana.

*c: Using Capabilities Class Dominant Condition Aggregation Method

Topography Map



©2016 AgriData, Inc.

map center: 40° 40' 41.04, -89° 40' 20.49

0ft 387ft 774ft



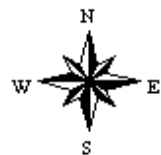
Maps Provided By:



© AgriData, Inc. 2016

www.AgriDataInc.com

14-8N-7E
Peoria County
Illinois



10/11/2016