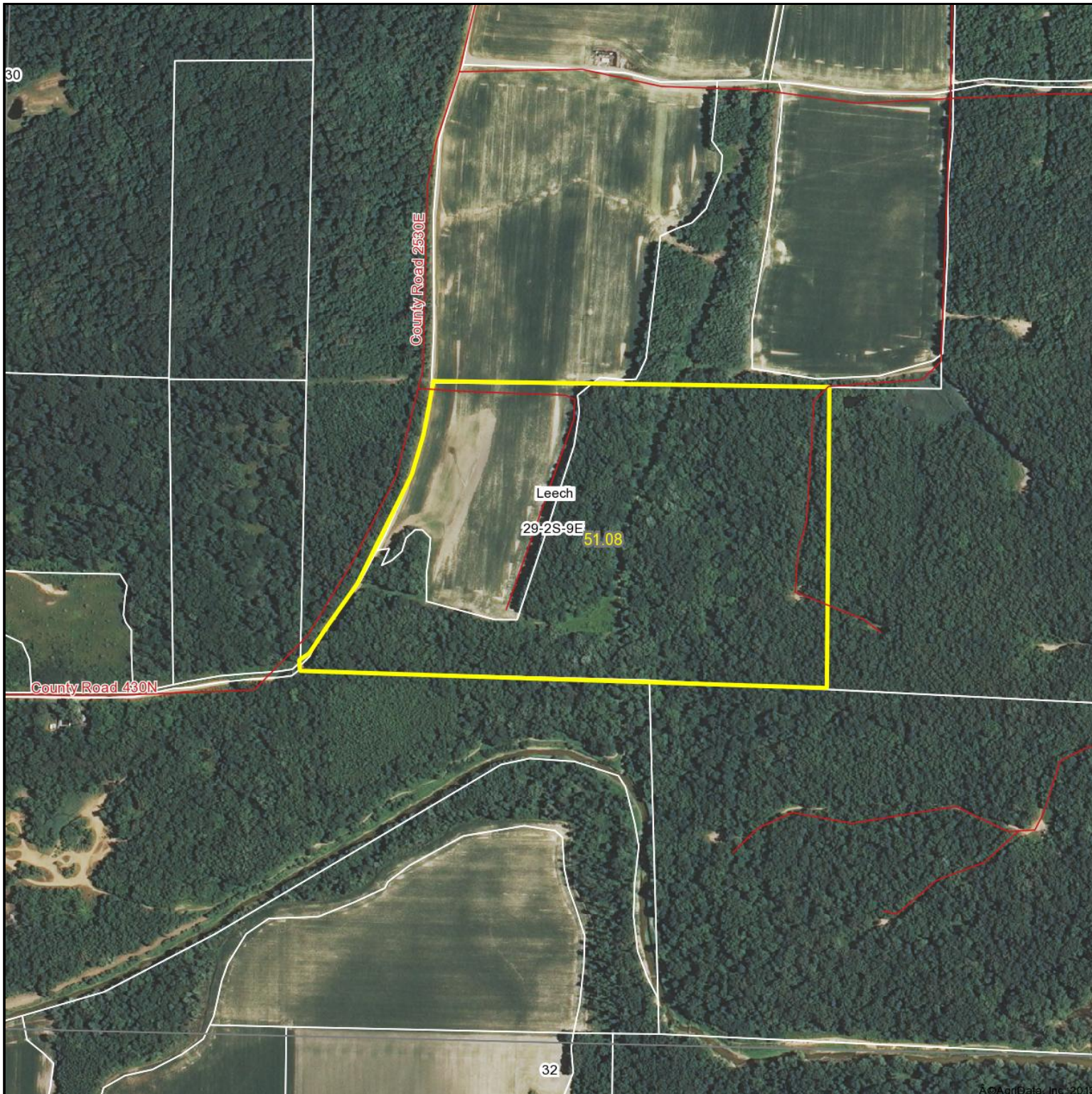


Aerial Map



Maps provided by:



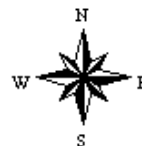
©AgriData, Inc. 2012

www.AgriDataInc.com

29-2S-9E
Wayne County
Illinois

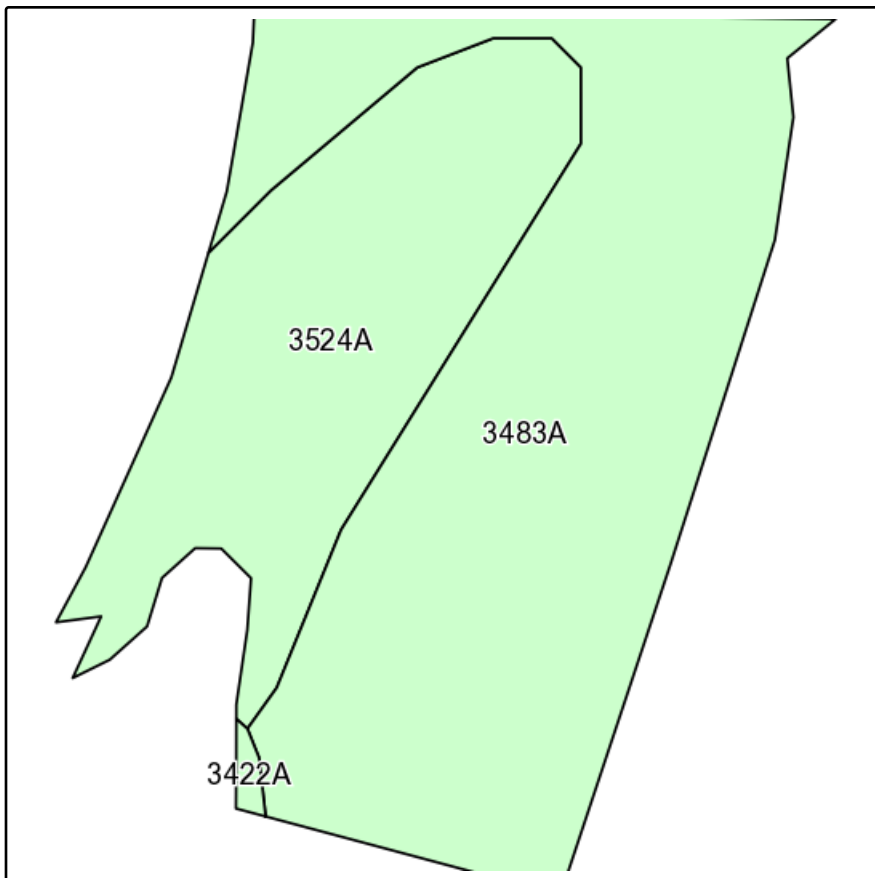
map center: 38° 19' 11.19, 88° 13' 58.89

scale: 6749



8/9/2013

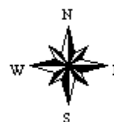
Soils Map



Field borders provided by Farm Service Agency as of 5/21/2008.
Soils data provided by University of Illinois at Champaign-Urbana.



State: **Illinois**
 County: **Wayne**
 Location: **29-2S-9E**
 Township: **Leech**
 Acres: **12.2**
 Date: **8/9/2013**



Maps provided by:

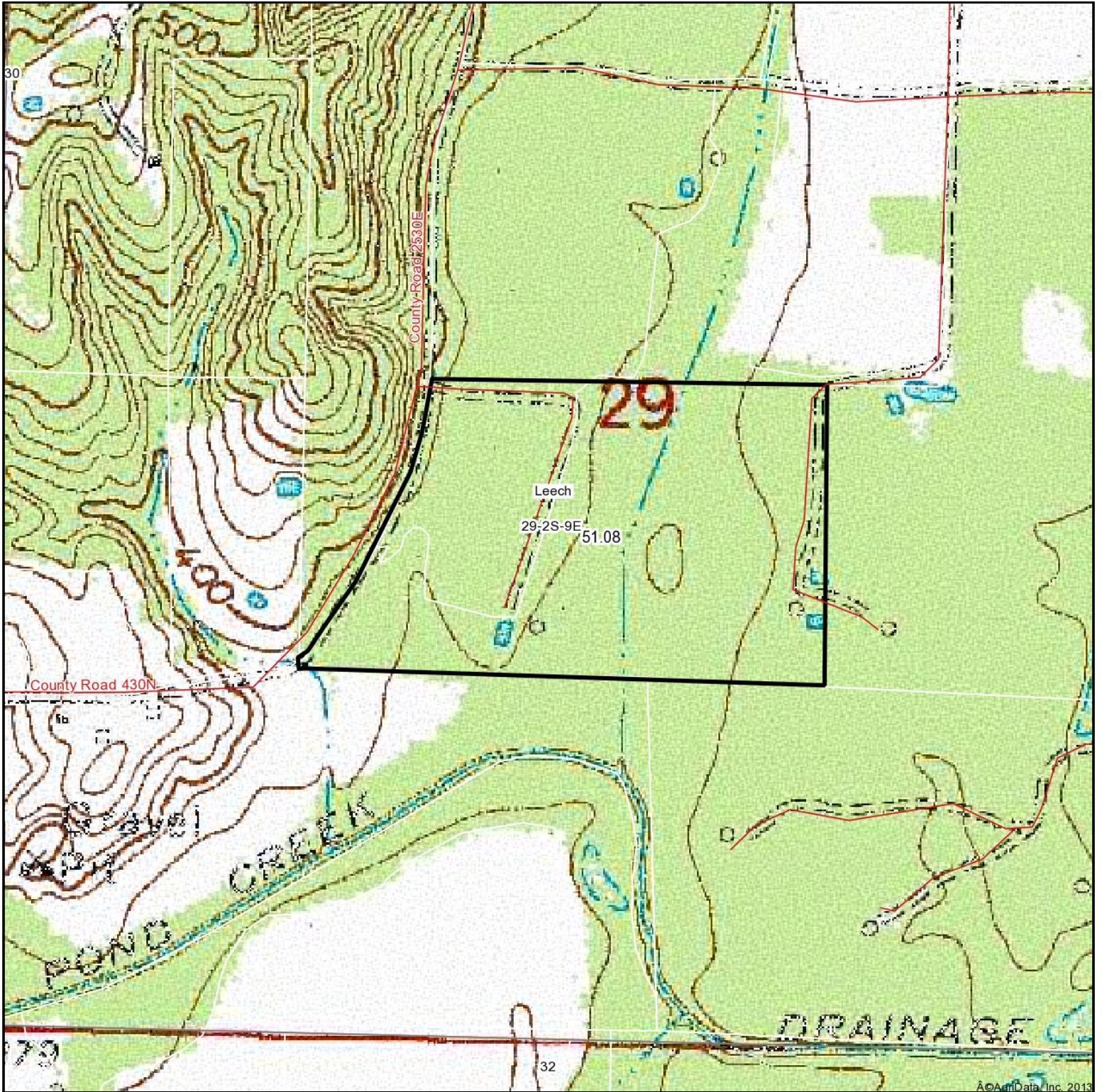


©AgriData, Inc 2013
www.AgriDataInc.com

Code	Soil Description	Acres	Percent of field	Il. State Productivity Index Legend	Corn Bu/A	Soybeans Bu/A	Wheat Bu/A	Crop productivity index for optimum management
3483A	Henshaw silt loam, 0 to 2 percent slopes, frequently flooded	7.9	65.1%		160	50	60	117
3524A	Zipp silty clay, 0 to 2 percent slopes, frequently flooded	4.2	34.4%		137	46	53	103
3422A	Cape silty clay loam, 0 to 2 percent slopes, frequently flooded	0.1	0.5%		136	46	58	103
Weighted Average					152	48.6	57.6	112.1

Table: Optimum Crop Productivity Ratings for Illinois Soil by K.R. Olson and J.M. Lang, Office of Research, ACES, University of Illinois at Champaign-Urbana. Version: 1/2/2012 Amended Table S2 B811 (Updated 1/10/2012)
 Crop yields and productivity indices for optimum management (B811) are maintained at the following NRES web site: <http://soilproductivity.nres.illinois.edu/>
 ** Indexes adjusted for slope and erosion according to Bulletin 811 Table S3

Topography Map



©AgriData, Inc. 2013

map center: 38° 19' 11.19, 88° 13' 58.89

scale: 6749



8/9/2013



Maps provided by:



©AgriData, Inc. 2012

www.AgriDataInc.com

29-2S-9E
Wayne County
Illinois

Field borders provided by Farm Service Agency as of 5/21/2008. Aerial photography provided by Aerial Photography Field Office.