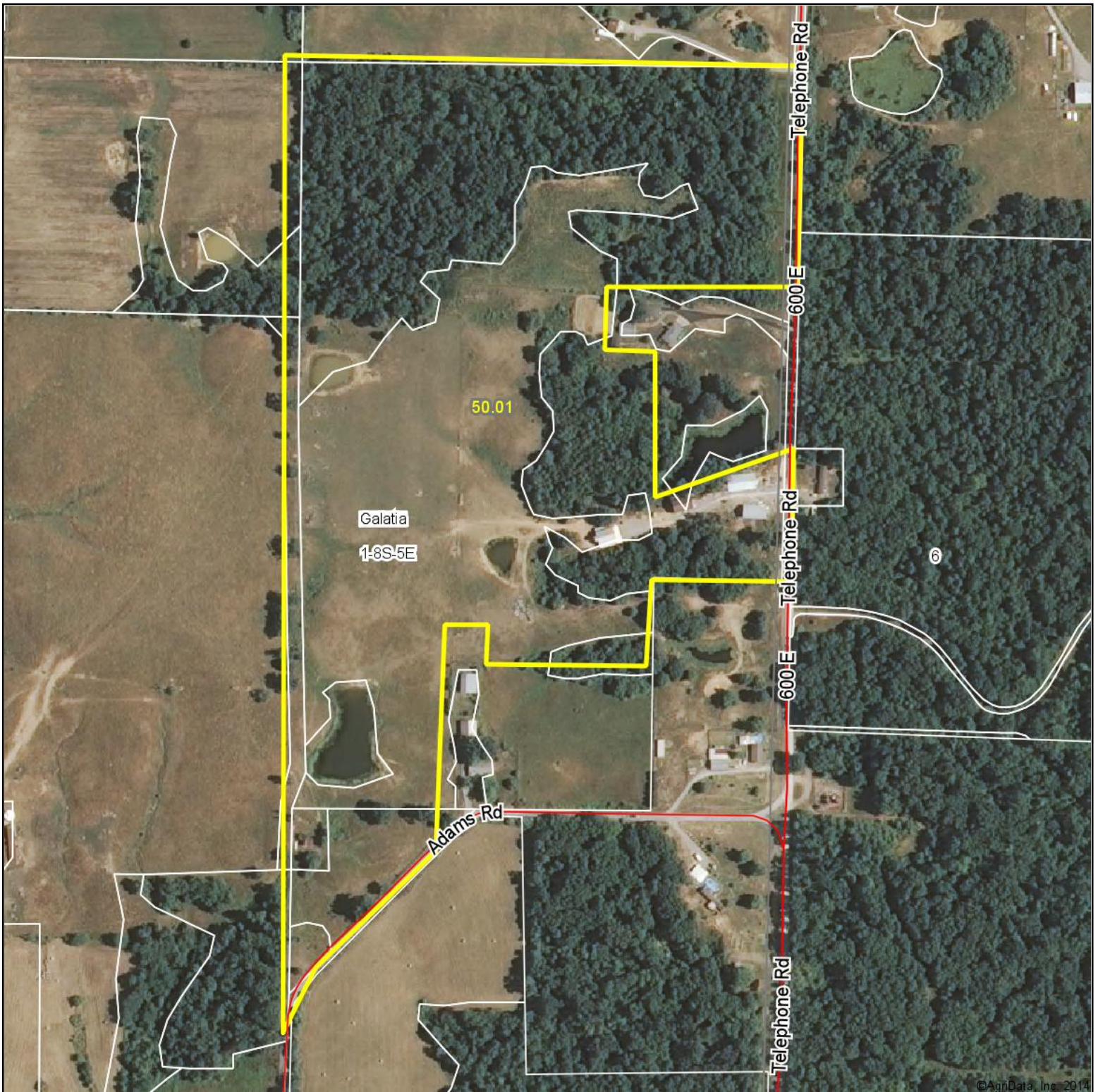


Aerial Map



©AgriData, Inc. 2014



Maps Provided By:

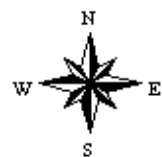


© AgriData, Inc. 2014 www.AgriDataInc.com

1-8S-5E
Saline County
Illinois

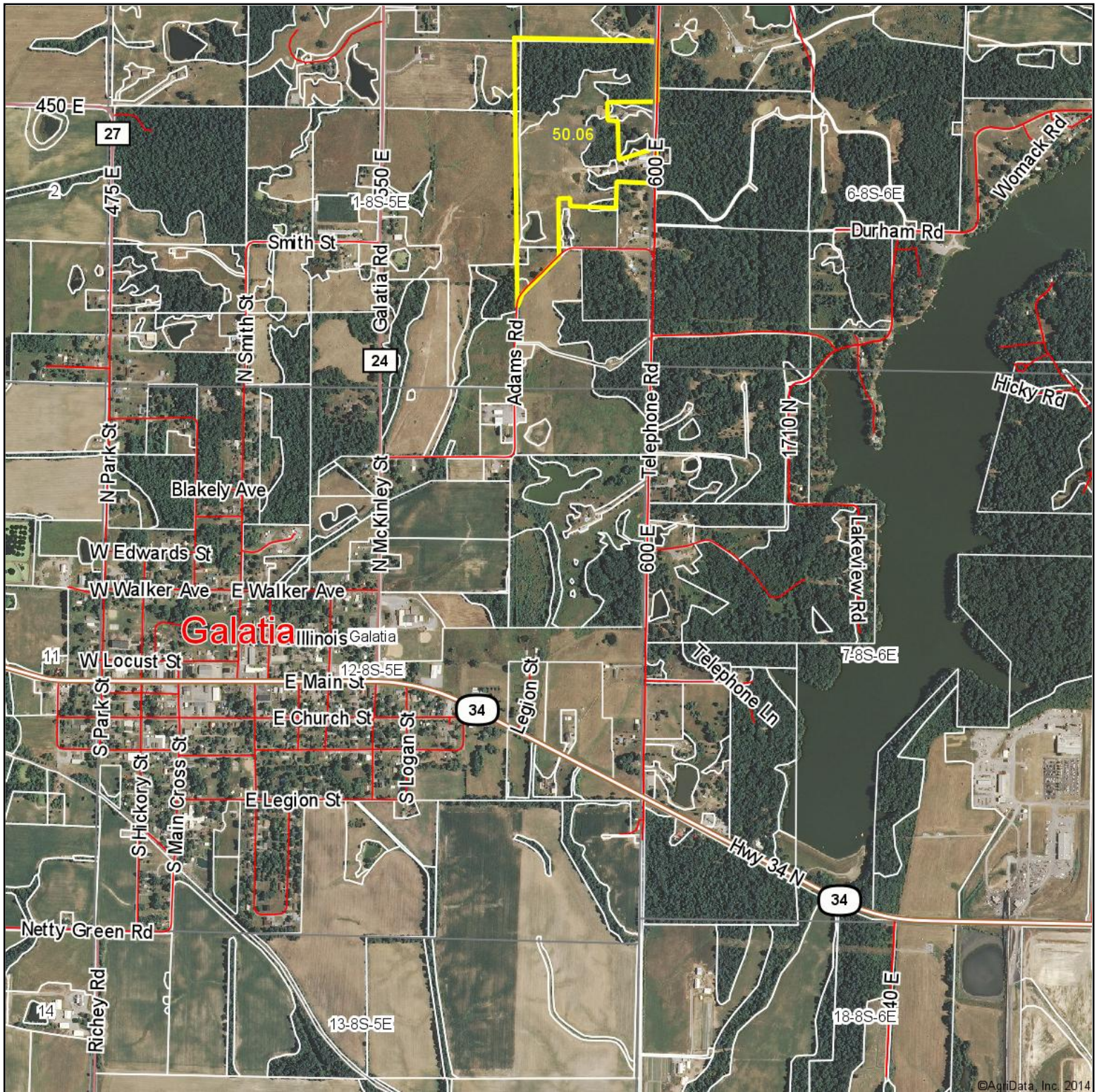
map center: 37° 51' 15.52, 88° 35' 54.97

scale: 4764



5/15/2014

Aerial Map



©AgriData, Inc. 2014



Maps Provided By:

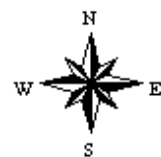


© AgriData, Inc. 2014 www.AgriDataInc.com

12-8S-5E
Saline County
Illinois

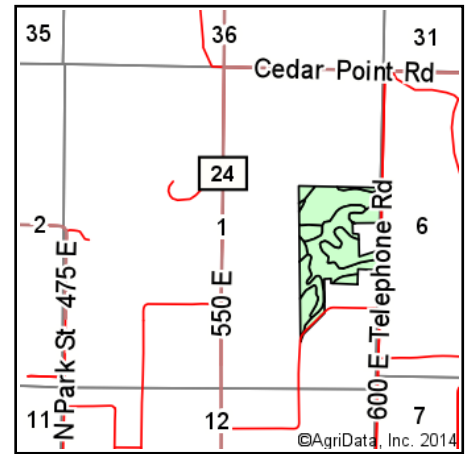
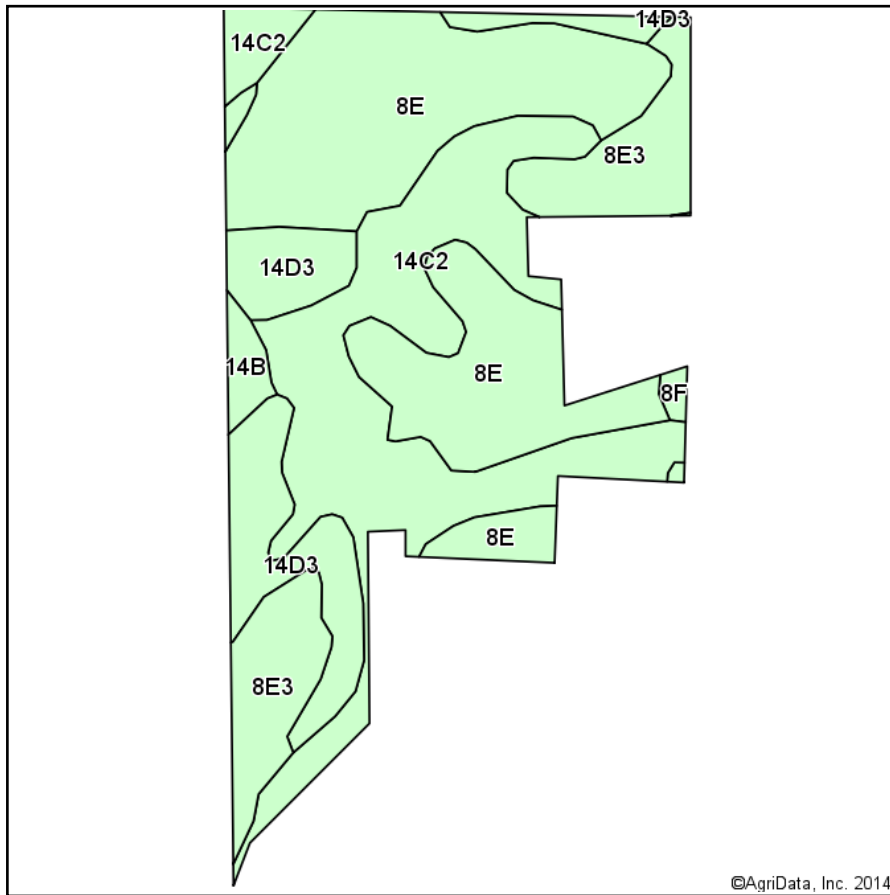
map center: 37° 50' 39.88, 88° 35' 59.01

scale: 17247

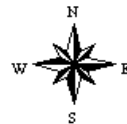


5/15/2014

Soil Map



State: **Illinois**
 County: **Saline**
 Location: **1-8S-5E**
 Township: **Galatia**
 Acres: **50.06**
 Date: **5/15/2014**



Maps Provided By:



Area Symbol: IL165. Soil Area Version: 8

| Code | Soil Description | Acres | Percent of field | Il. State Productivity Index Legend | Corn Bu/A | Soybeans Bu/A | Wheat Bu/A | Grass-legume e hay, T/A | Crop productivity index for optimum management |
|-------------------------|--|-------|------------------|-------------------------------------|--------------|---------------|-------------|-------------------------|--|
| **8E | Hickory loam, 12 to 18 percent slopes | 19.68 | 39.3% | | **113 | **38 | **46 | 0.00 | **86 |
| **14C2 | Ava silt loam, 4 to 7 percent slopes, eroded | 16.40 | 32.8% | | **122 | **40 | **50 | 0.00 | **90 |
| **8E3 | Hickory loam, 12 to 18 percent slopes, severely eroded | 6.57 | 13.1% | | **98 | **33 | **40 | 0.00 | **75 |
| **14D3 | Ava silt loam, 5 to 12 percent slopes, severely eroded | 6.30 | 12.6% | | **100 | **33 | **41 | 0.00 | **74 |
| **14B | Ava silt loam, 2 to 4 percent slopes | 0.81 | 1.6% | | **134 | **44 | **54 | 0.00 | **99 |
| **8F | Hickory loam, 18 to 45 percent slopes | 0.30 | 0.6% | | **73 | **25 | **29 | 0.00 | **55 |
| Weighted Average | | | | | 112.4 | 37.4 | 45.9 | 0.00 | 84.4 |

Area Symbol: IL165, Soil Area Version: 8

Table: Optimum Crop Productivity Ratings for Illinois Soil by K.R. Olson and J.M. Lang, Office of Research, ACES, University of Illinois at Champaign-Urbana. Version: 1/2/2012 Amended Table S2 B811 (Updated 1/10/2012)

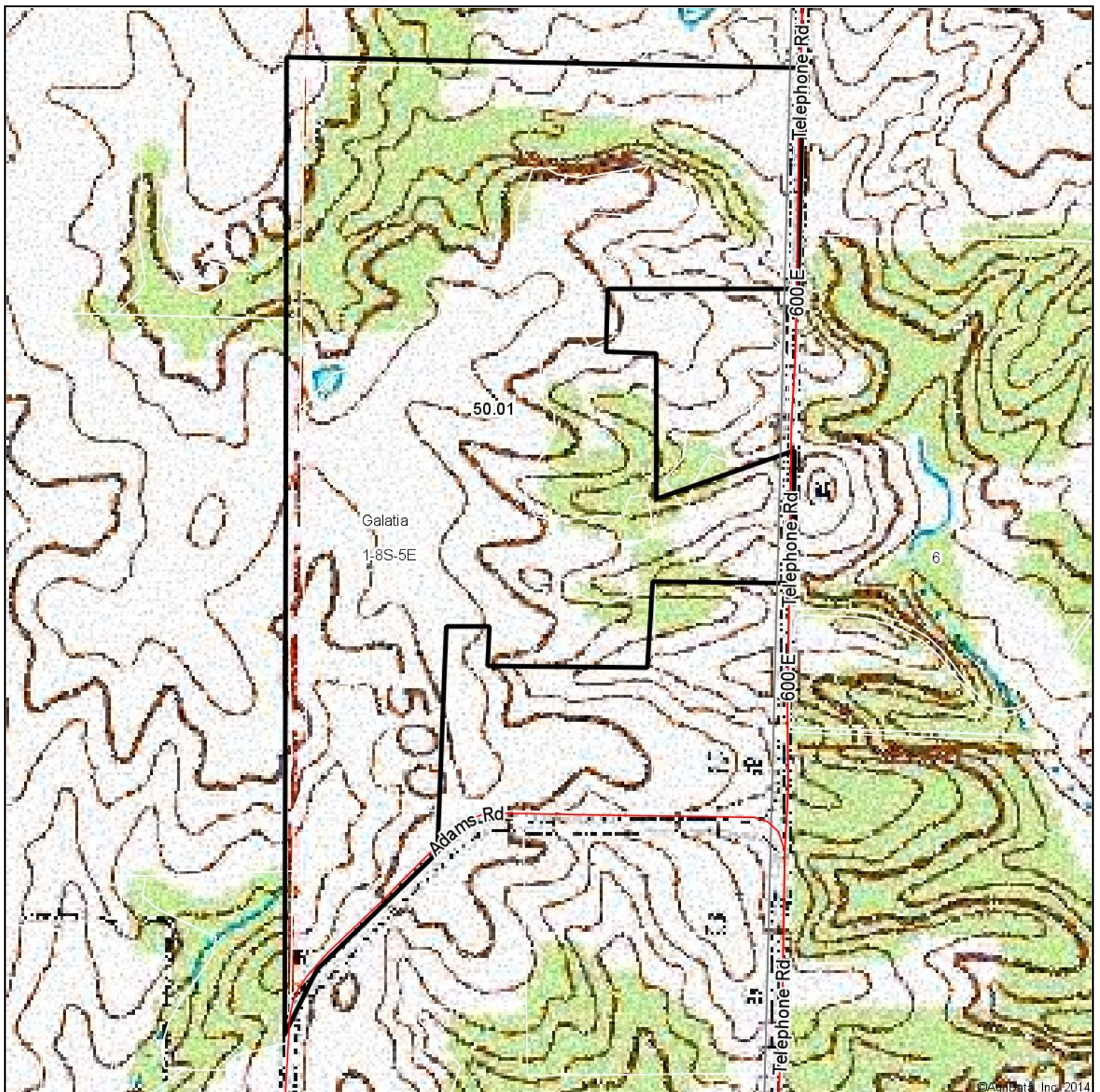
Crop yields and productivity indices for optimum management (B811) are maintained at the following NRES web site: <http://soilproductivity.nres.illinois.edu/>

** Indexes adjusted for slope and erosion according to Bulletin 811 Table S3

e Soils in the well drained group were not rated for grass-legume and are shown with a zero "0".

Field borders provided by Farm Service Agency as of 5/21/2008. Aerial photography provided by Aerial Photography Field Office.

Topography Map



©AgriData, Inc. 2014



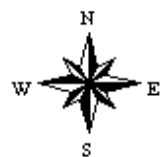
Maps Provided By:



1-8S-5E
Saline County
Illinois

map center: 37° 51' 15.52, 88° 35' 54.97

scale: 4764



5/15/2014