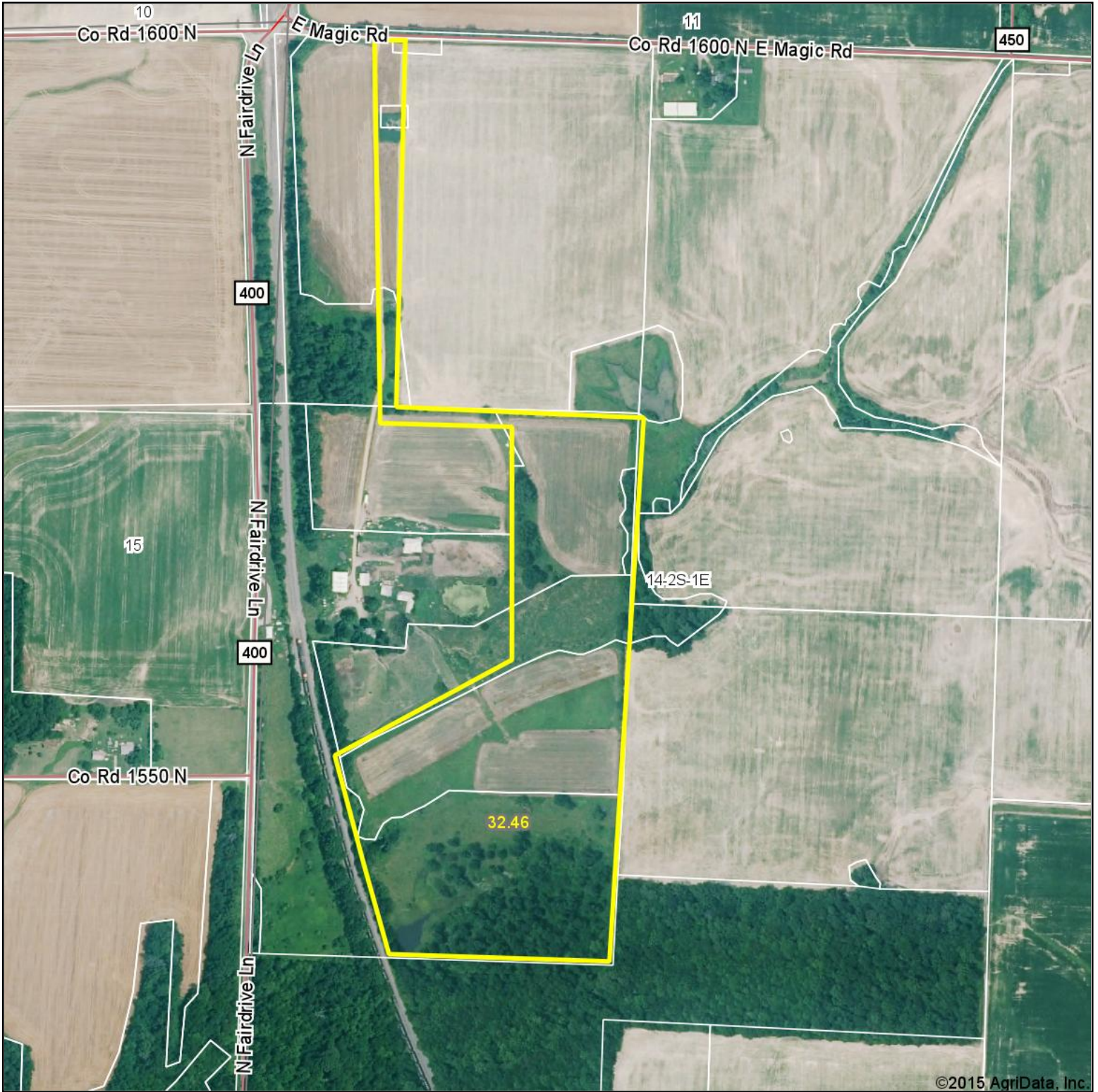


# Aerial Map



Maps Provided By:

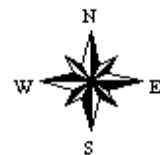


© AgriData, Inc. 2015 www.AgriDataInc.com

**14-2S-1E**  
**Jefferson County**  
**Illinois**

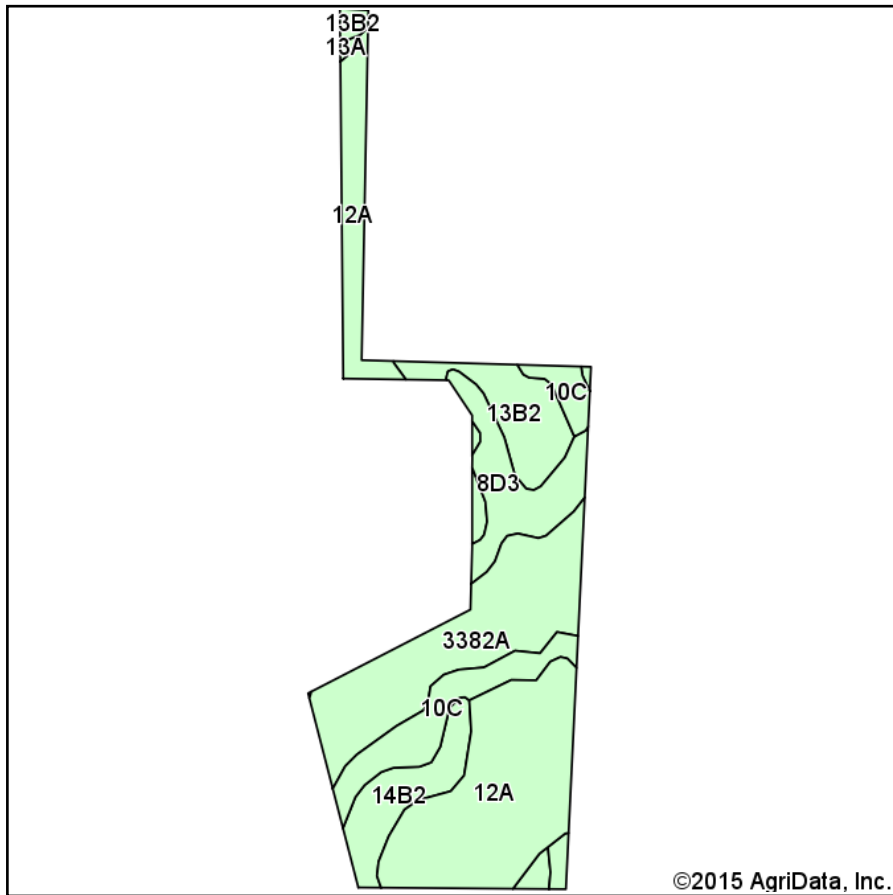
map center: 38° 21' 11.68, 89° 4' 4.14

scale: 6360

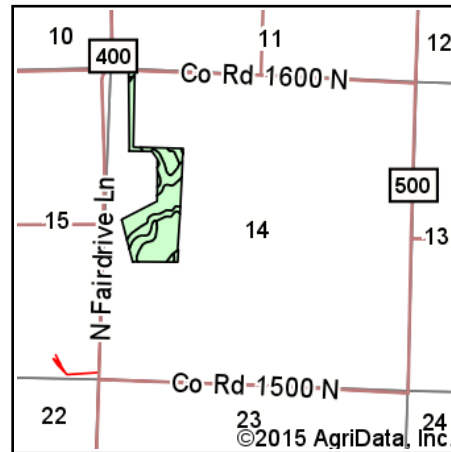


9/17/2015

# Soil Map



Soils data provided by USDA and NRCS.



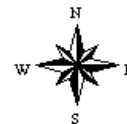
State: **Illinois**  
 County: **Jefferson**  
 Location: **14-2S-1E**  
 Township: **Casner**  
 Acres: **32.02**  
 Date: **9/17/2015**



Maps Provided By:



© AgriData, Inc. 2015 www.AgriDataInc.com



## Area Symbol: IL081, Soil Area Version: 7

Code	Soil Description	Acres	Percent of field	Il. State Productivity Index Legend	Corn Bu/A	Soybeans Bu/A	Wheat Bu/A	Grass-legume hay, T/A	Crop productivity index for optimum management
12A	Wynoose silt loam, 0 to 2 percent slopes	11.31	35.3%		128	42	51	4.26	97
3382A	Belknap silt loam, 0 to 2 percent slopes, frequently flooded	7.58	23.7%		156	52	63	4.89	117
**10C	Plumfield silty clay loam, 5 to 10 percent slopes	3.82	11.9%		**103	**34	**39	**3.37	**78
**13B2	Bluford silt loam, 2 to 5 percent slopes, eroded	3.23	10.1%		**129	**42	**52	**3.22	**96
**8D3	Hickory clay loam, 10 to 18 percent slopes, severely eroded	3.18	9.9%		**98	**33	**40	0.00	**75
**14B2	Ava silt loam, 2 to 5 percent slopes, eroded	2.82	8.8%		**126	**41	**51	0.00	**93
13A	Bluford silt loam, 0 to 2 percent slopes	0.08	0.2%		136	44	55	3.39	101
<b>Weighted Average</b>					<b>128.6</b>	<b>42.4</b>	<b>51.4</b>	<b>3.40</b>	<b>96.8</b>

Area Symbol: IL081, Soil Area Version: 7

**Table: Optimum Crop Productivity Ratings for Illinois Soil by K.R. Olson and J.M. Lang, Office of Research, ACES, University of Illinois at Champaign-Urbana.** Version: 1/2/2012 Amended Table S2 B811 (Updated 1/10/2012)

Crop yields and productivity indices for optimum management (B811) are maintained at the following NRES web site:

<https://www.ideals.illinois.edu/handle/2142/1027/>

\*\* Indexes adjusted for slope and erosion according to Bulletin 811 Table S3

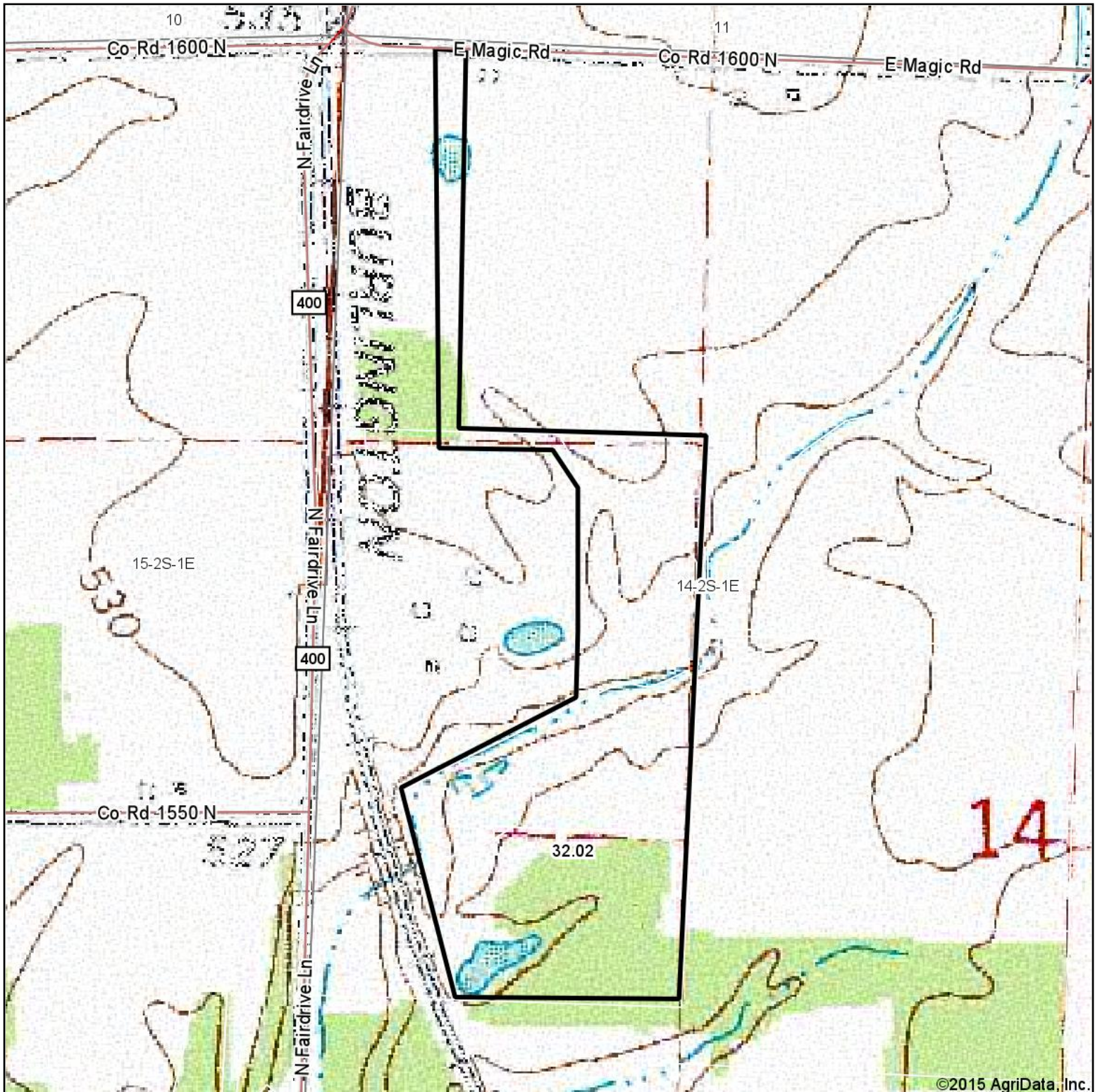
e Soils in the well drained group were not rated for grass-legume and are shown with a zero "0".

Soils data provided by USDA and NRCS. Soils data provided by University of Illinois at Champaign-Urbana.

\*c: Using Capabilities Class Dominant Condition Aggregation Method



# Topography Map



©2015 AgriData, Inc.



Maps Provided By:

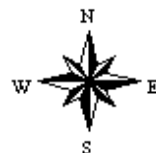


© AgriData, Inc. 2015 www.AgriDataInc.com

14-2S-1E  
Jefferson County  
Illinois

map center: 38° 21' 12.58, 89° 4' 7

scale: 6170



9/17/2015