

Preliminary Plat For STONEHENGE ESTATES

BEING PART OF THE S.E. QUARTER OF SECTION 31 AND
PART OF THE S.W. QUARTER OF SECTION 32, T.1S., R.9W.,
OF THE THIRD PRINCIPAL MERIDIAN,
ST. CLAIR COUNTY, ILLINOIS

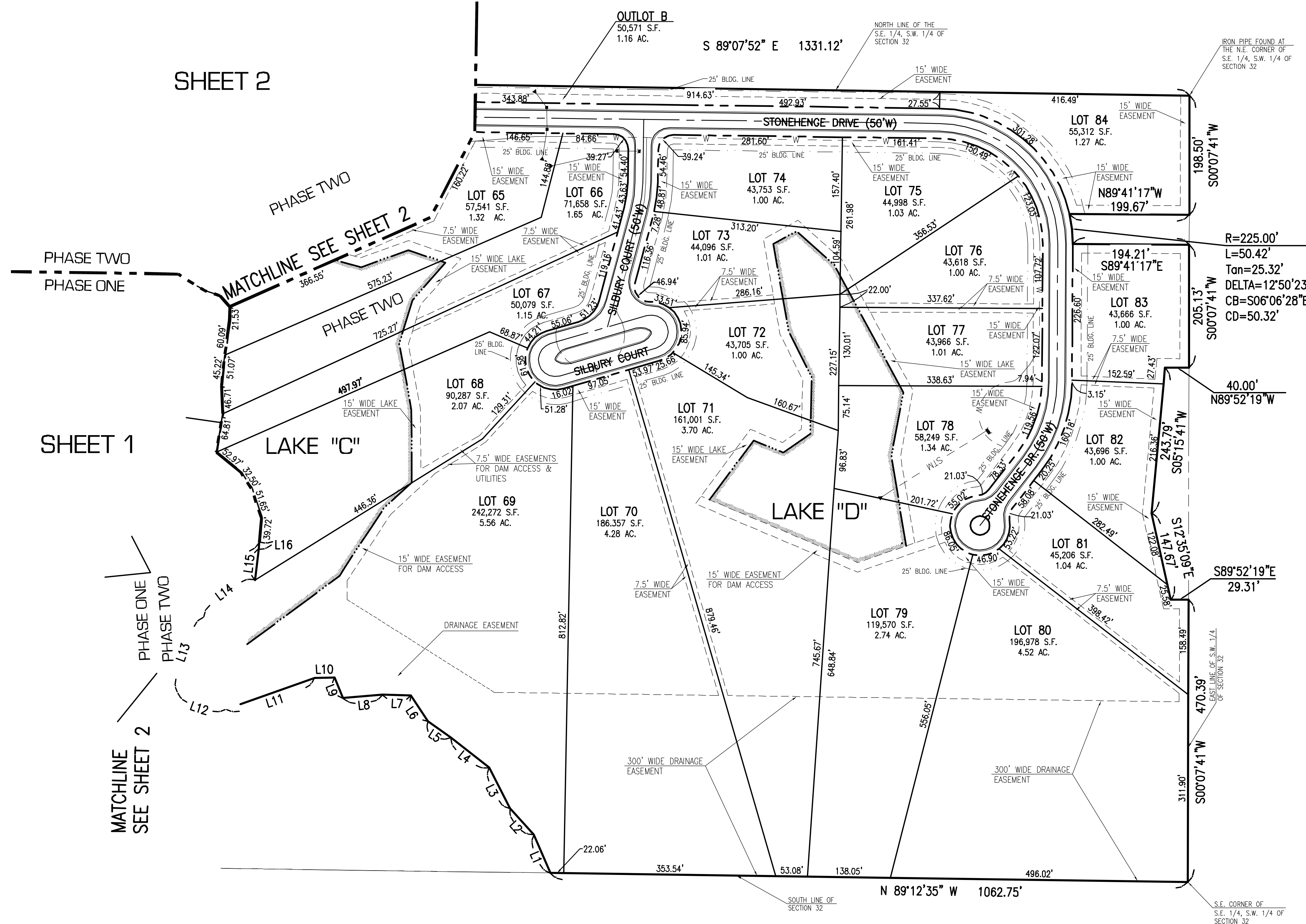
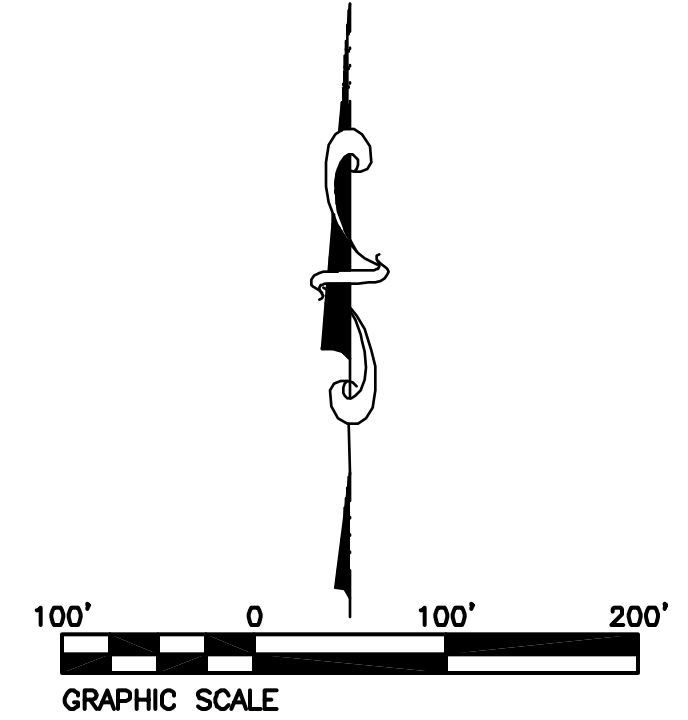
THOUVENOT,
WADE &
MOERCHEN, INC.
ENGINEERS • SURVEYORS • PLANNERS



- CORPORATE OFFICE
4940 OLD COLLINSVILLE RD.
SWANSEA, ILLINOIS 62226
TEL (618) 624-4488
FAX (618) 624-6688
corp@twm-inc.com
- WATERLOO OFFICE
113 SOUTH MAIN STREET
WATERLOO, ILLINOIS 62298
TEL (618) 939-5050
FAX (618) 939-3938
waterloo@twm-inc.com
- ST. LOUIS OFFICE
1001 CRAIG ROAD, SUITE 260
ST. LOUIS, MISSOURI 63146
TEL (314) 236-5052
FAX (314) 872-2194
stlouis@twm-inc.com

PROFESSIONAL REGISTRATIONS LICENSE NO.
ILLINOIS PROFESSIONAL DESIGN FIRM 184-001220
PROFESSIONAL ENGINEERING CORP. 62-035370
PROFESSIONAL STRUCTURAL ENGR. CORP. 81-005202
ILLINOIS PROF. LAND SURVEYING CORP. 048-000029
MISSOURI PROFESSIONAL ENGR. CORP. NC 001528
MISSOURI LAND SURVEYING CORP. NC 000346

SEAL
Signature: _____
Signature Date: _____
Expiration Date: _____
STATEMENT OF RESPONSIBILITY
I hereby confirm that the document herein to be
authenticated by my seal is restricted to this sheet,
and I hereby disclaim any responsibility for all other
drawings, specifications, estimates, reports or other
documents or instruments relating to or intended to
be utilized for any other part of the architectural,
engineering or survey project.



LINE TABLE					
LINE	LENGTH	BEARING	LINE	LENGTH	BEARING
L1	69.60'	N23°17'27"W	L10	33.14'	S88°48'30"W
L2	59.25'	N42°31'51"W	L11	157.00'	S70°28'30"W
L3	76.38'	N26°58'11"W	L12	85.06'	N70°47'54"W
L4	81.62'	N51°50'27"W	L13	132.56'	N19°11'58"E
L5	46.17'	N54°27'35"W	L14	105.50'	N53°38'56"E
L6	51.91'	N33°26'24"W	L15	51.93'	N07°05'09"E
L7	47.44'	N88°31'00"W	L16	12.21'	N04°59'55"E
L8	66.22'	S85°03'53"W			
L9	37.18'	N22°09'40"W			

• SITE BENCHMARK ELEV: 604.42
CUT BOX ON CONCRETE CURBING
AT GUTTER LINE ON ISLAND ON
WILTSHIRE DRIVE NEAR THE ENTRANCE
OF STONEHENGE SUBDIVISION, NORTH OF
GILMORE LAKE ROAD.

IT IS NOT WARRANTED THAT THIS PLAT
CONTAINS COMPLETE INFORMATION REGARDING
DEDICATIONS, EASEMENT RESERVATIONS,
RIGHTS OF WAY, BUILDING LINES, AND
OTHER ENCUMBRANCES. FOR COMPLETE
INFORMATION, A TITLE OPINION OR
COMMITMENT FOR TITLE INSURANCE SHOULD
BE OBTAINED.

This Plat is Not
for Record

TITLE:
**PRELIMINARY PLAT
FOR
STONEHENGE ESTATES**

PROJECT:
**PART OF THE S.E. QUART. OF SEC. 31 AND
PART OF THE S.W. QUART. OF SEC. 32,
T.1S., R.9W., OF THE 3RD PRINCIPAL MERIDIAN
ST. CLAIR COUNTY, ILLINOIS**

REV.	DATE	DESCRIPTION

DRAWN BY: C.J.D. SHEET
DESIGNED BY:
CHECKED BY:
APPROVED BY:
PROJECT NUMBER: D30050235 OF 3 SHEETS
3
 ISSUED FOR REVIEW ISSUED FOR BIDDING
 ISSUED FOR CONSTR. RECORD DRAWING

G:\STISK\PROJ\050235.dwg Preliminary\050235-P03.dwg 5/2/2006 2:04:30 PM CST