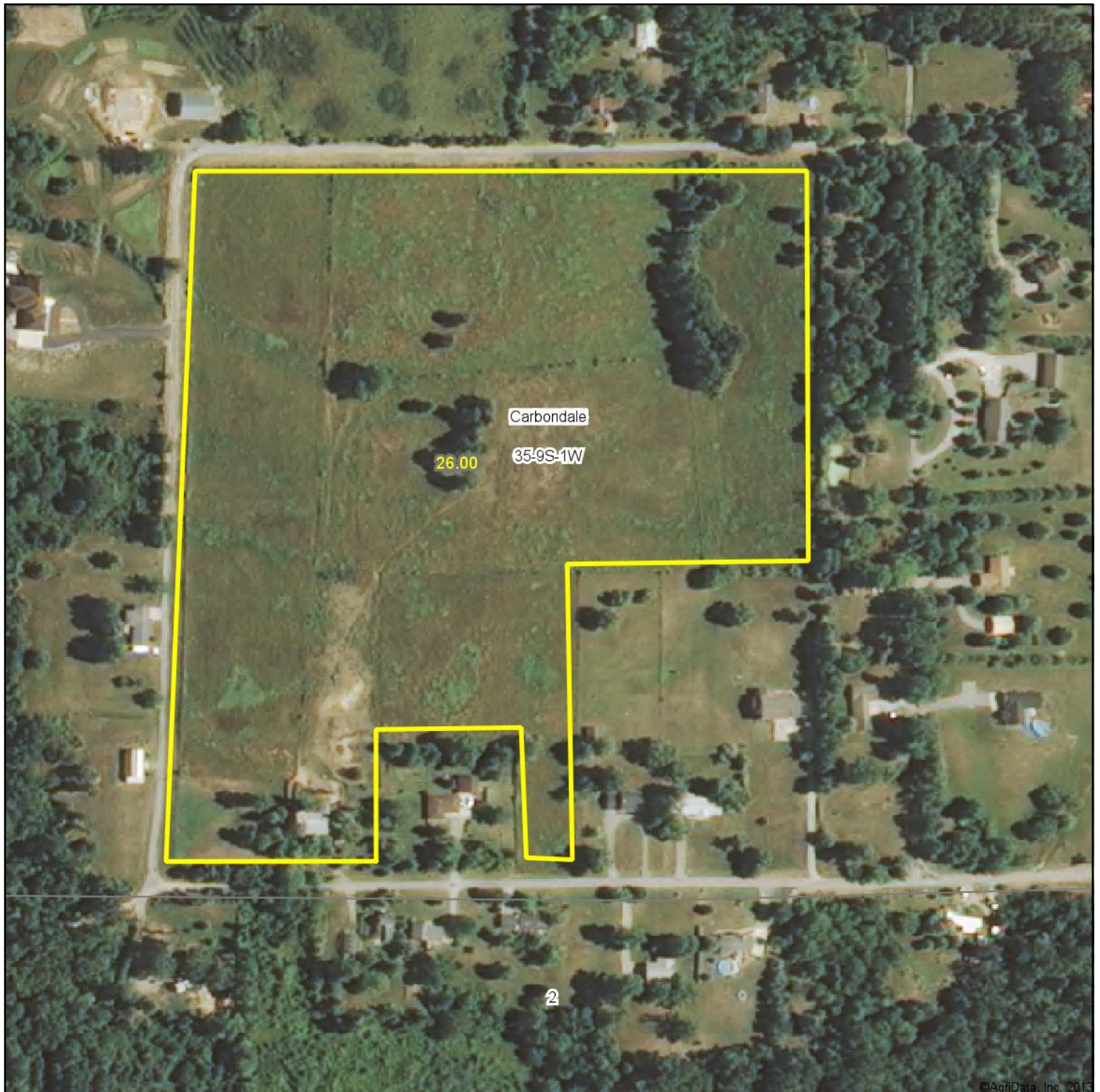


Aerial Map



©AgriData, Inc. 2013



Maps Provided By:



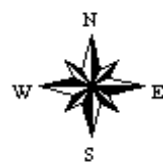
© AgriData, Inc. 2013

www.AgriDataInc.com

35-9S-1W
Jackson County
Illinois

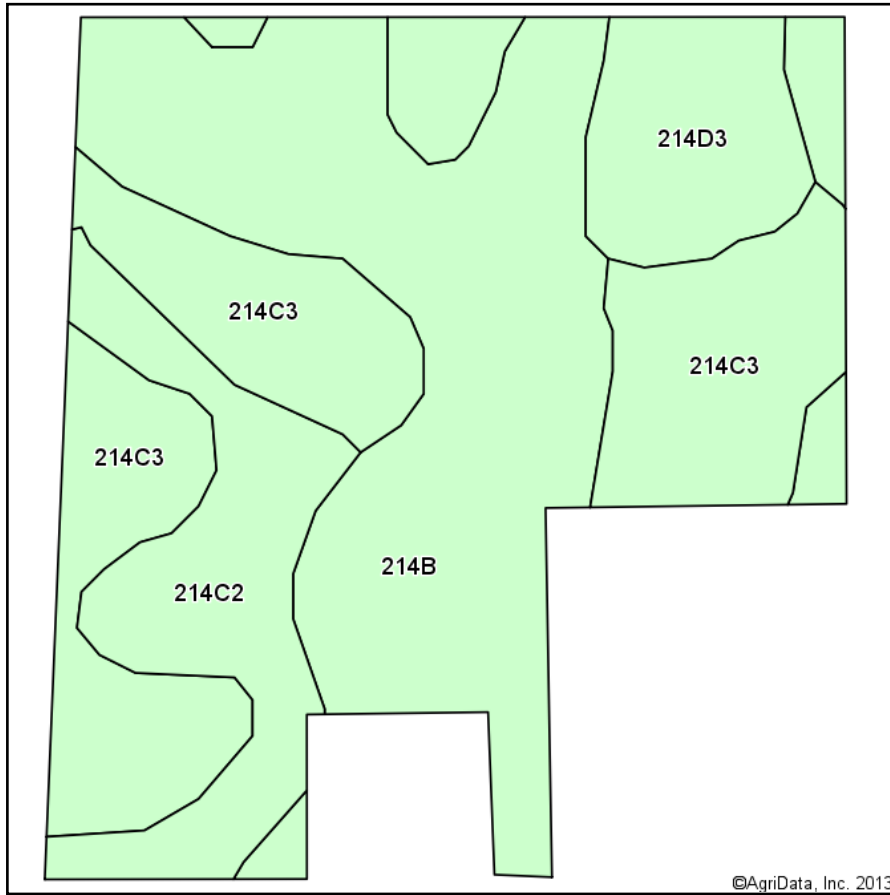
map center: 37° 41' 16.39, 89° 11' 0.43

scale: 3263



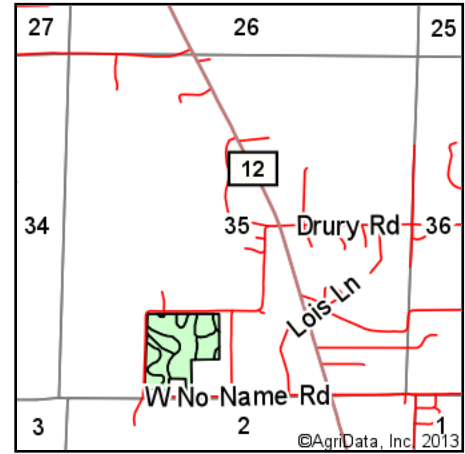
12/26/2013

Soil Map

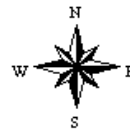


Soils data provided by USDA and NRCS.

©AgriData, Inc. 2013



State: **Illinois**
 County: **Jackson**
 Location: **35-9S-1W**
 Township: **Carbondale**
 Acres: **26**
 Date: **12/26/2013**



Maps Provided By:



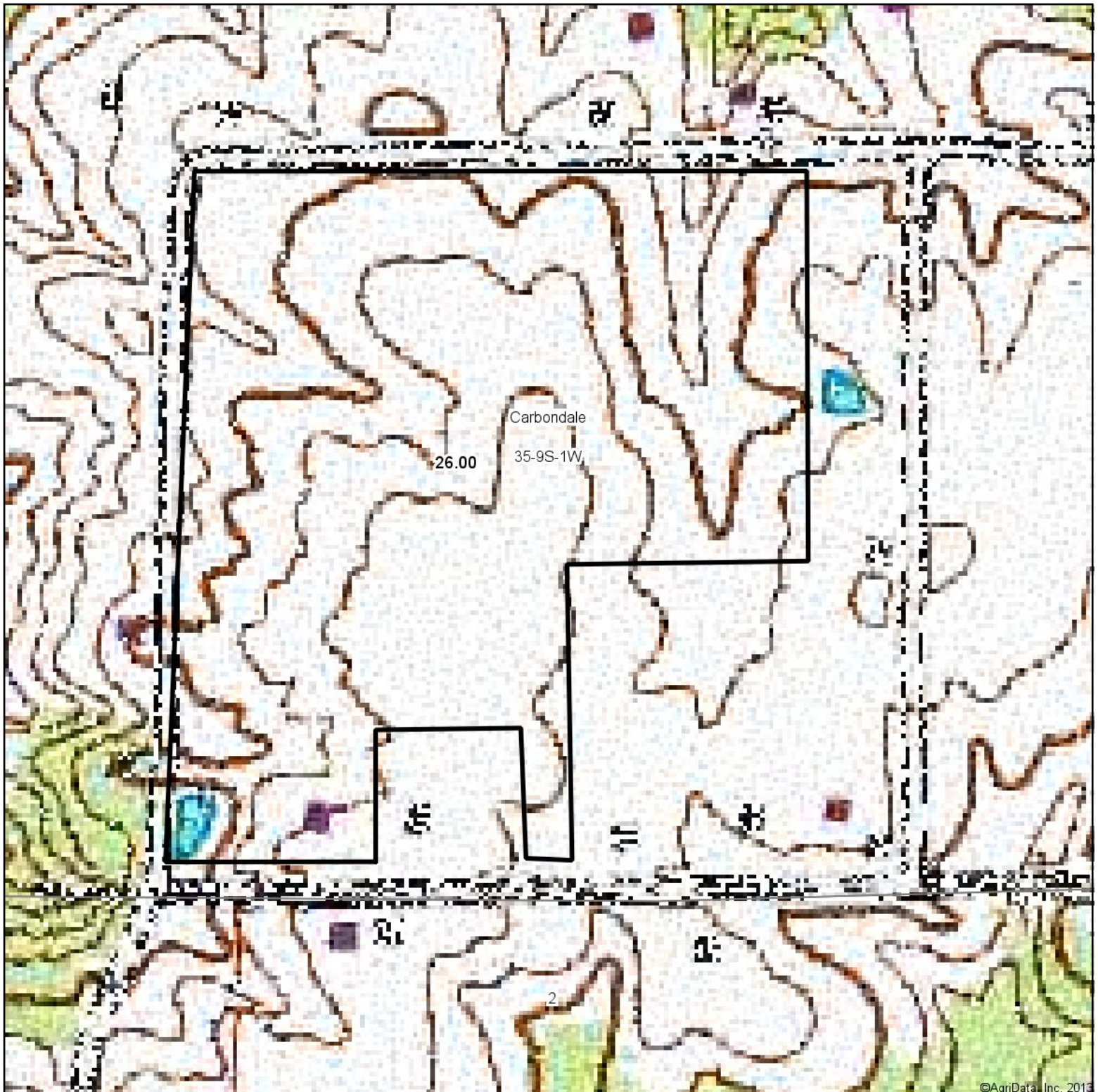
© AgriData, Inc. 2013

www.AgriDataInc.com

Code	Soil Description	Acres	Percent of field	Non-Irr Class
214B	Hosmer silt loam, 2 to 5 percent slopes	11.19	43.0%	Ile
214C3	Hosmer silt loam, 5 to 10 percent slopes, severely eroded	7.88	30.3%	IVe
214C2	Hosmer silt loam, 5 to 10 percent slopes, eroded	3.81	14.7%	IIIe
214D3	Hosmer silt loam, 10 to 18 percent slopes, severely eroded	3.12	12.0%	VIe

Field borders provided by Farm Service Agency as of 5/21/2008. Aerial photography provided by Aerial Photography Field Office.

Topography Map



Maps Provided By:

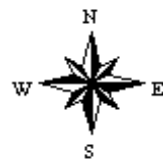


© AgriData, Inc. 2013 www.AgriDataInc.com

35-9S-1W
Jackson County
Illinois

map center: 37° 41' 16.39, 89° 11' 0.43

scale: 3254



12/26/2013