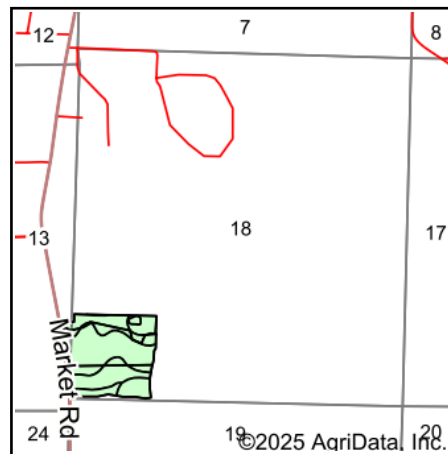
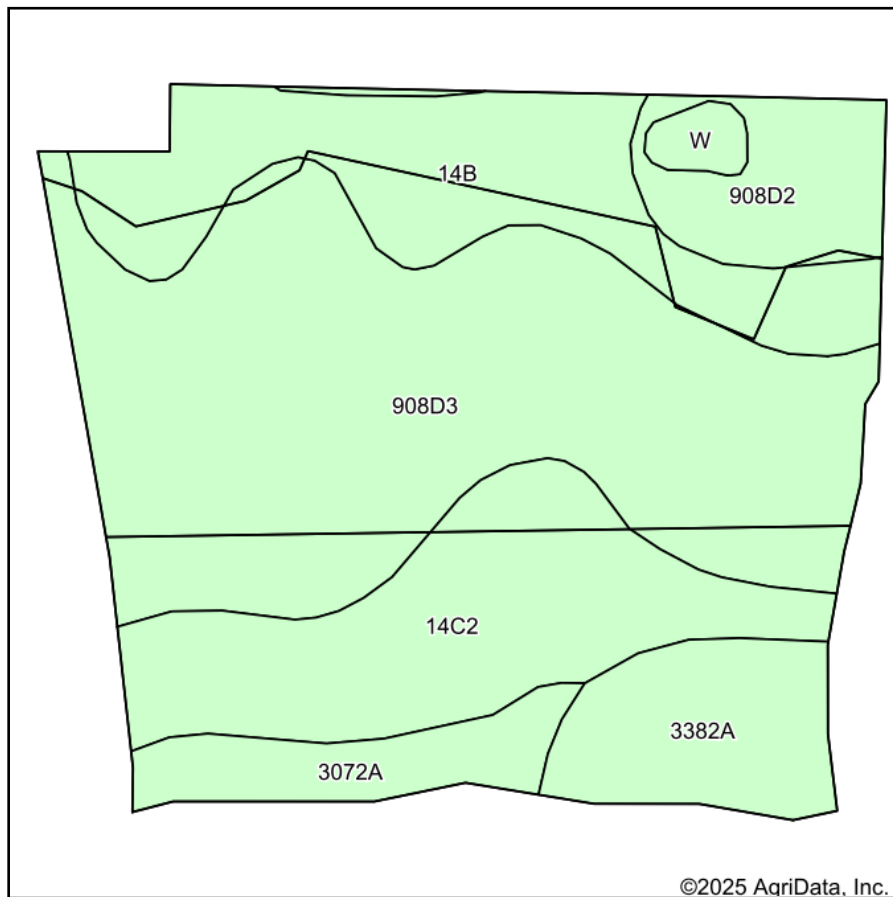


Soils Map



State: **Illinois**
 County: **Williamson**
 Location: **18-10S-3E**
 Township: **Creal Springs**
 Acres: **39.35**
 Date: **3/26/2025**



Maps Provided By:
surety
 CUSTOMIZED ONLINE MAPPING
 © AgriData, Inc. 2023 www.AgriDataInc.com



Area Symbol: IL199, Soil Area Version: 19

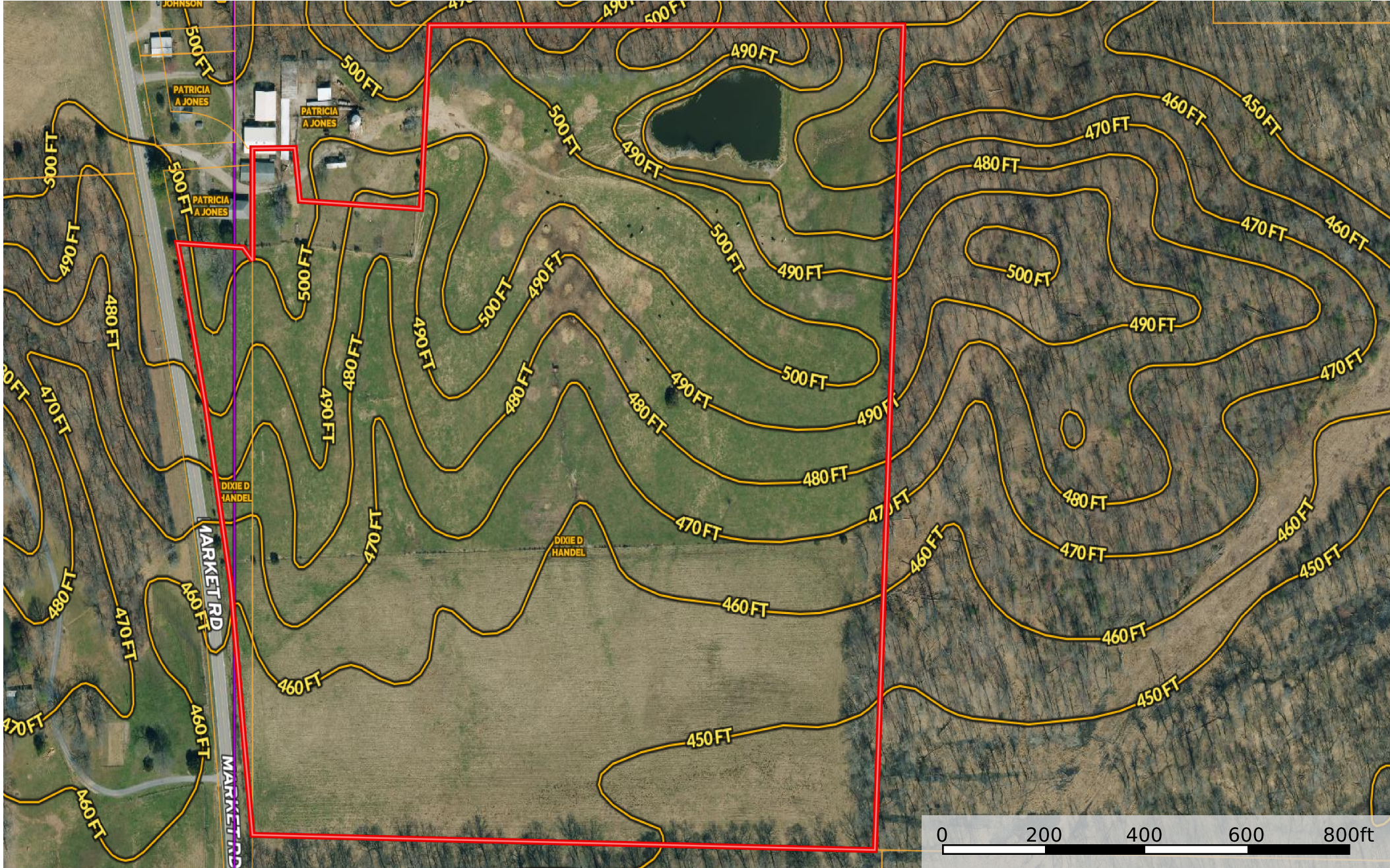
Code	Soil Description	Acres	Percent of field	Corn Bu/A	Soybeans Bu/A	Wheat Bu/A	Crop productivity index for optimum management	*n NCCPI Soybeans
**908D3	Hickory-Kell clay loams, 10 to 18 percent slopes, severely eroded	17.40	44.2%	**93	**32	**37	**71	37
**14C2	Ava silt loam, 5 to 10 percent slopes, eroded	7.14	18.1%	**120	**39	**49	**89	36
**14B	Ava silt loam, 2 to 5 percent slopes	6.64	16.9%	**134	**44	**54	**99	55
**3382A	Belknap silt loam, 0 to 2 percent slopes, frequently flooded	3.13	8.0%	**140	**47	**57	**105	67
**908D2	Hickory-Kell silt loams, 10 to 18 percent slopes, eroded	2.52	6.4%	**108	**37	**43	**82	43
**3072A	Sharon silt loam, 0 to 2 percent slopes, frequently flooded	2.09	5.3%	**148	**48	**57	**110	57
W	Water	0.43	1.1%					
Weighted Average				111.4	37.3	44.7	83.7	*n 43.3

Table: Optimum Crop Productivity Ratings for Illinois Soil EFOTG are sourced from Bulletin 811 calculated Map Unit Base Yield Indices, and adjusted (Adj) for slope, erosion, flooding, and surface texture. Publication Date: 01-28-2025

Crop yields and productivity (B811 EFOTG) are maintained at the following USDA web site: 2023 Illinois Soil Productivity and Yield Indices: <https://efotg.sc.egov.usda.gov/#/state/IL/documents/section=2&folder=52809>

** Base indexes from Bulletin 811 adjusted for slope, erosion, flooding, and surface texture according to the IL Soils EFOTG

*n: The aggregation method is "Weighted Average using all components"



Boundary