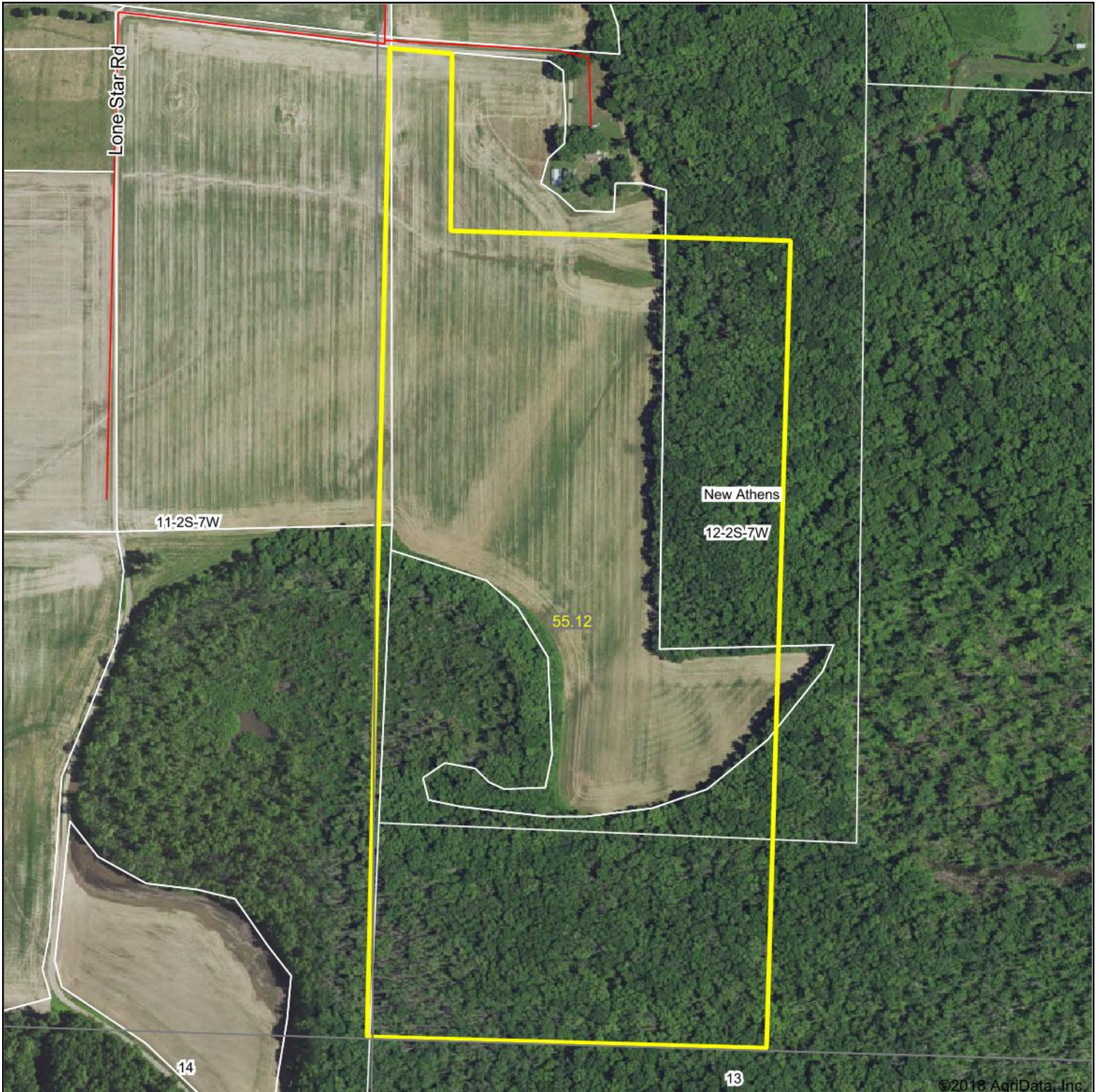
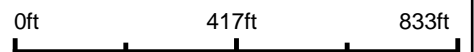


Aerial Map



©2018 AgriData, Inc.

map center: 38° 22' 8.96, -89° 49' 59.03



Maps Provided By:



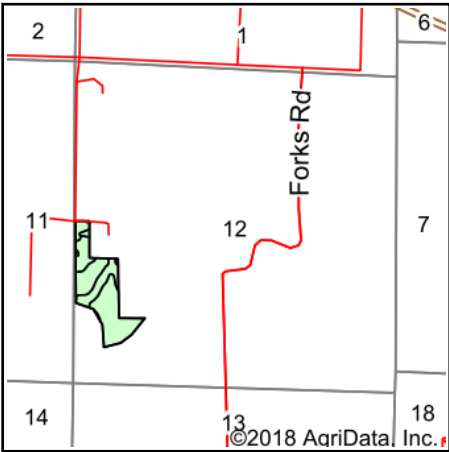
© AgriData, Inc. 2018

www.AgriDataInc.com

12-2S-7W
St Clair County
Illinois



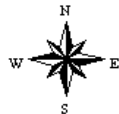
2/12/2018



State: **Illinois**
County: **St Clair**
Location: **12-2S-7W**
Township: **New Athens**
Acres: **22.73**
Date: **2/12/2018**



Maps Provided By:



Soils data provided by USDA and NRCS.

Area Symbol: IL163, Soil Area Version: 9

Code	Soil Description	Acres	Percent of field	II. State Productivity Index Legend	Corn Bu/A	Soybeans Bu/A	Wheat Bu/A	Crop productivity index for optimum management
8131B	Alvin fine sandy loam, 2 to 5 percent slopes, occasionally flooded	14.76	64.9%		150	49	59	111
8122D3	Colp silty clay loam, 10 to 18 percent slopes, severely eroded, occasionally flooded	3.93	17.3%		134	42	56	98
8434B	Ridgway silt loam, 2 to 5 percent slopes, occasionally flooded	2.77	12.2%		164	50	61	117
8084A	Okaw silt loam, 0 to 2 percent slopes, occasionally flooded	1.17	5.1%		129	42	55	96
3180A	Dupo silt loam, 0 to 2 percent slopes, frequently flooded	0.10	0.4%		182	56	68	131
Weighted Average					148	47.6	58.6	108.8

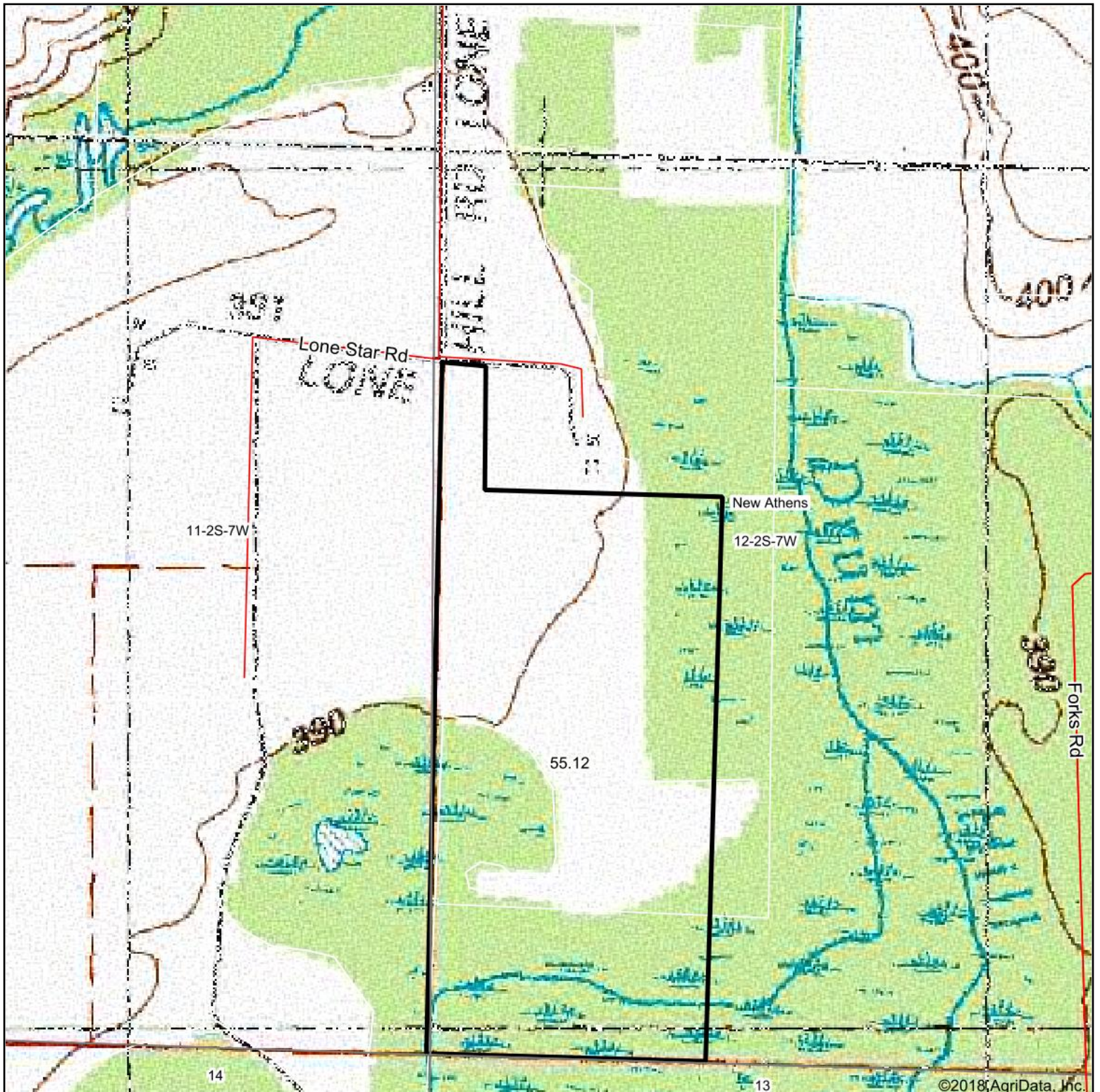
Table: Optimum Crop Productivity Ratings for Illinois Soil by K.R. Olson and J.M. Lang, Office of Research, ACES, University of Illinois at Champaign-Urbana. Version: 1/2/2012 Amended Table S2 B811

Crop yields and productivity indices for optimum management (B811) are maintained at the following NRES web site: <http://soilproductivity.nres.illinois.edu/>

** Indexes adjusted for slope and erosion according to Bulletin 811 Table S3

Soils data provided by USDA and NRCS. Soils data provided by University of Illinois at Champaign-Urbana.

Topography Map



map center: 38° 22' 15.1, -89° 49' 59.48

0ft 597ft 1194ft



Maps Provided By:



© AgriData, Inc. 2018

www.AgrIDataInc.com

12-2S-7W
St Clair County
Illinois



2/12/2018