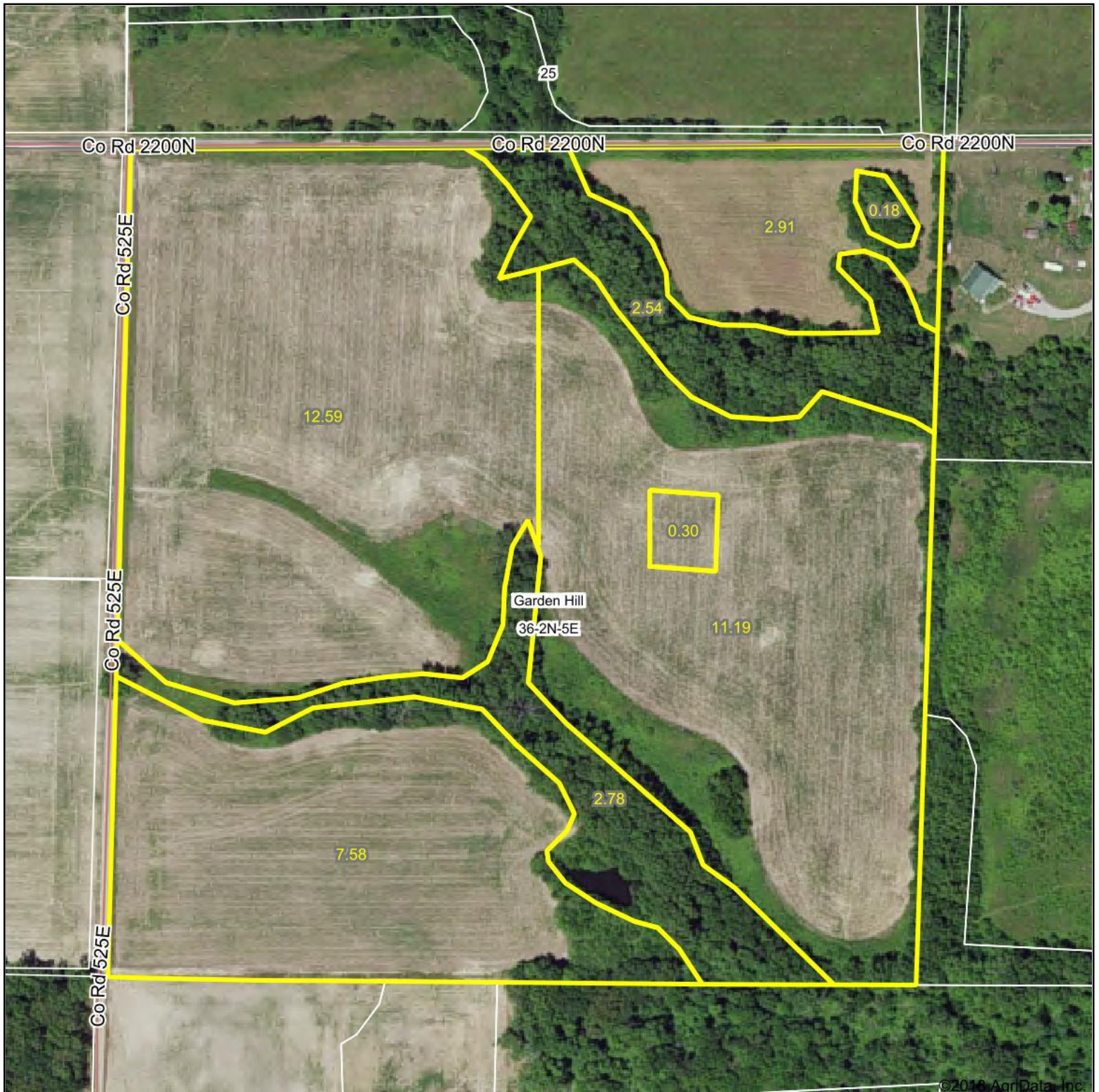


# Aerial Map



©2018 AgriData, Inc.

map center: 38° 34' 34.97, -88° 35' 46.87

0ft 249ft 499ft



Maps Provided By:



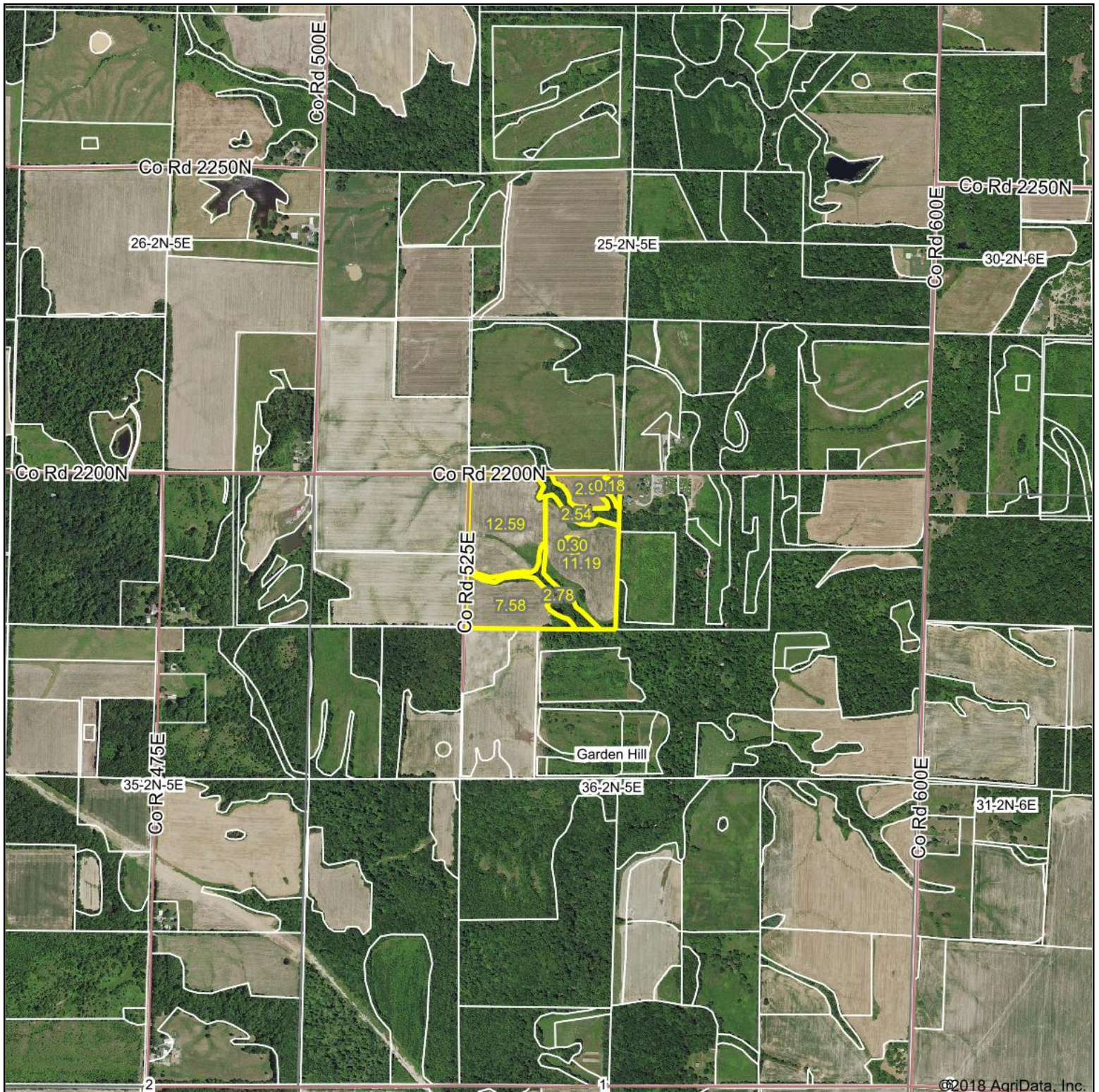
**36-2N-5E**  
**Wayne County**  
**Illinois**



3/24/2018



# Aerial Map



map center: 38° 34' 34.97, -88° 35' 46.74

0ft 1345ft 2690ft



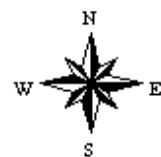
Maps Provided By:



© AgriData, Inc. 2018

www.AgriDataInc.com

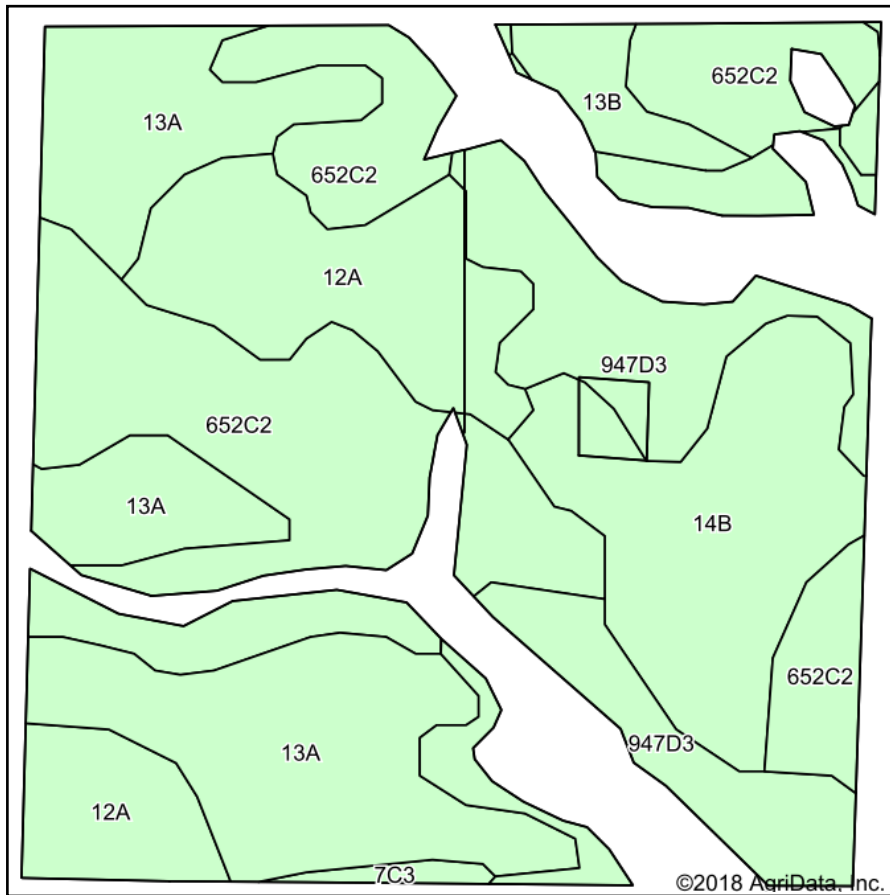
**36-2N-5E**  
**Wayne County**  
**Illinois**



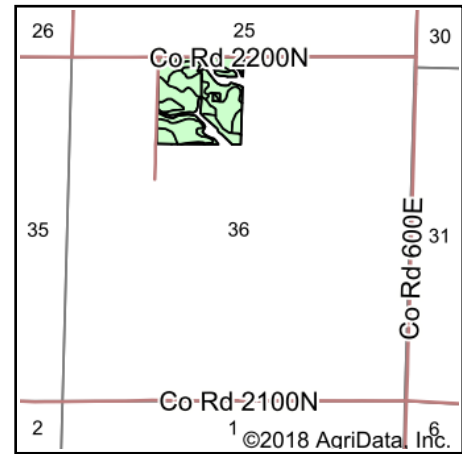
3/24/2018



# Soils Map



Soils data provided by USDA and NRCS.



State: **Illinois**  
 County: **Wayne**  
 Location: **36-2N-5E**  
 Township: **Garden Hill**  
 Acres: **34.57**  
 Date: **3/24/2018**



Maps Provided By:  
  
 CUSTOMIZED ONLINE MAPPING  
 © AgriData, Inc. 2018 www.AgriDataInc.com



## Area Symbol: IL191, Soil Area Version: 15

Code	Soil Description	Acres	Percent of field	Il. State Productivity Index Legend	Corn Bu/A	Soybeans Bu/A	Wheat Bu/A	Grass-legume hay, T/A	Crop productivity index for optimum management
**652C2	Passport silt loam, 5 to 10 percent slopes, eroded	10.21	29.5%		**116	**39	**51	**3.85	**88
13A	Bluford silt loam, 0 to 2 percent slopes	8.04	23.3%		136	44	55	3.39	101
**947D3	Hickory-Passport clay loams, 10 to 18 percent slopes, severely eroded	5.64	16.3%		**109	**36	**45	**2.89	**80
12A	Wynoose silt loam, 0 to 2 percent slopes	4.82	13.9%		128	42	51	4.26	97
**14B	Ava silt loam, 2 to 5 percent slopes	4.69	13.6%		**134	**44	**54	0.00	**99
**13B	Bluford silt loam, 2 to 5 percent slopes	0.97	2.8%		**135	**44	**54	**3.36	**100
**7C3	Atlas silty clay loam, 5 to 10 percent slopes, severely eroded	0.20	0.6%		**87	**30	**34	**2.60	**67
Weighted Average					124	40.9	51.3	3.10	92.7

**Table: Optimum Crop Productivity Ratings for Illinois Soil by K.R. Olson and J.M. Lang, Office of Research, ACES, University of Illinois at Champaign-Urbana. Version: 1/2/2012 Amended Table S2 B811**

Crop yields and productivity indices for optimum management (B811) are maintained at the following NRES web site: <http://soilproductivity.nres.illinois.edu/>

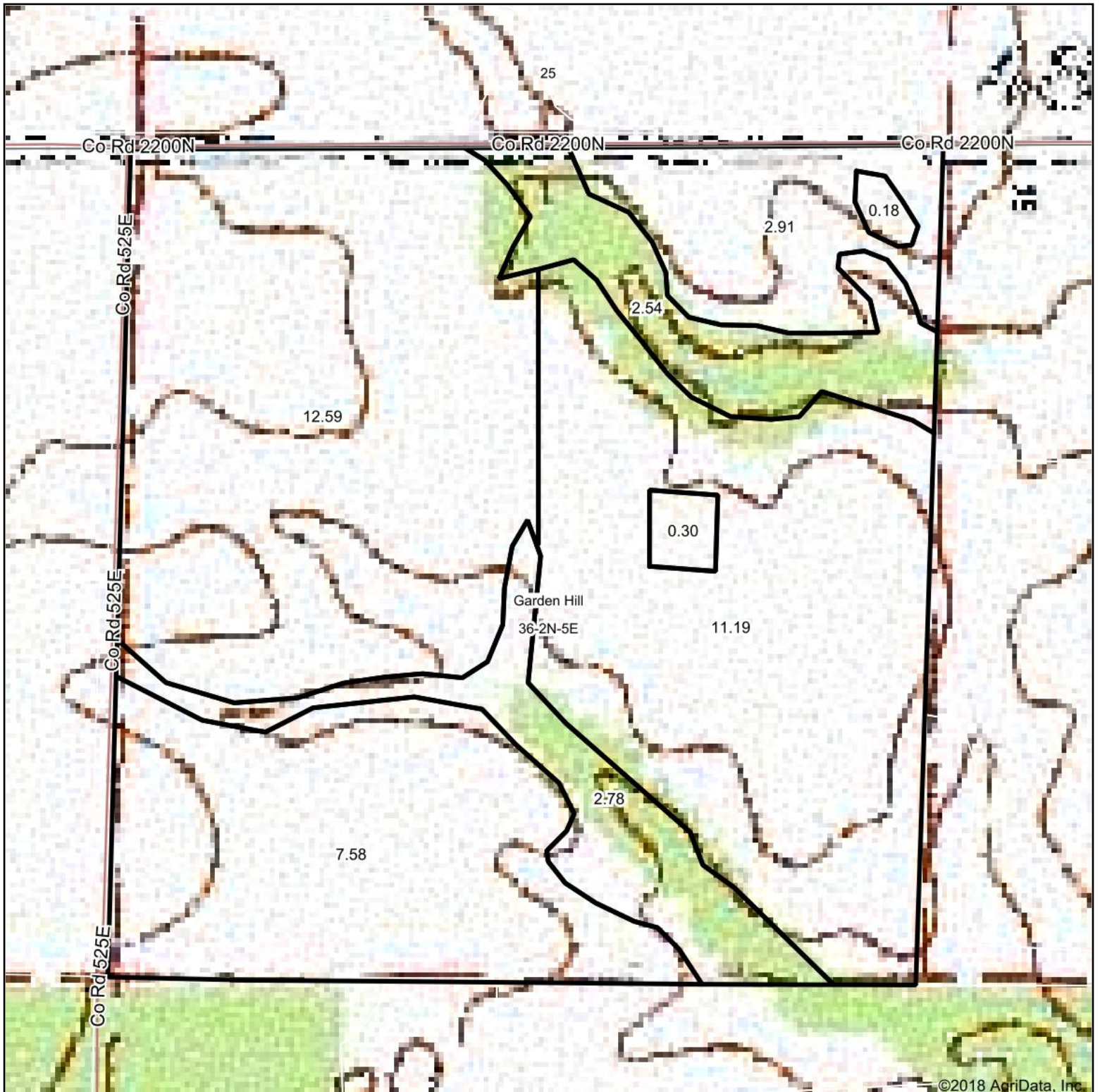
\*\* Indexes adjusted for slope and erosion according to Bulletin 811 Table S3

e Soils in the well drained group were not rated for grass-legume and are shown with a zero "0".

Soils data provided by USDA and NRCS. Soils data provided by University of Illinois at Champaign-Urbana.

\*c: Using Capabilities Class Dominant Condition Aggregation Method

# Topography Map



©2018 AgriData, Inc.

map center: 38° 34' 34.97, -88° 35' 46.87

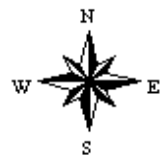
0ft 249ft 499ft



Maps Provided By:



**36-2N-5E**  
**Wayne County**  
**Illinois**



3/24/2018