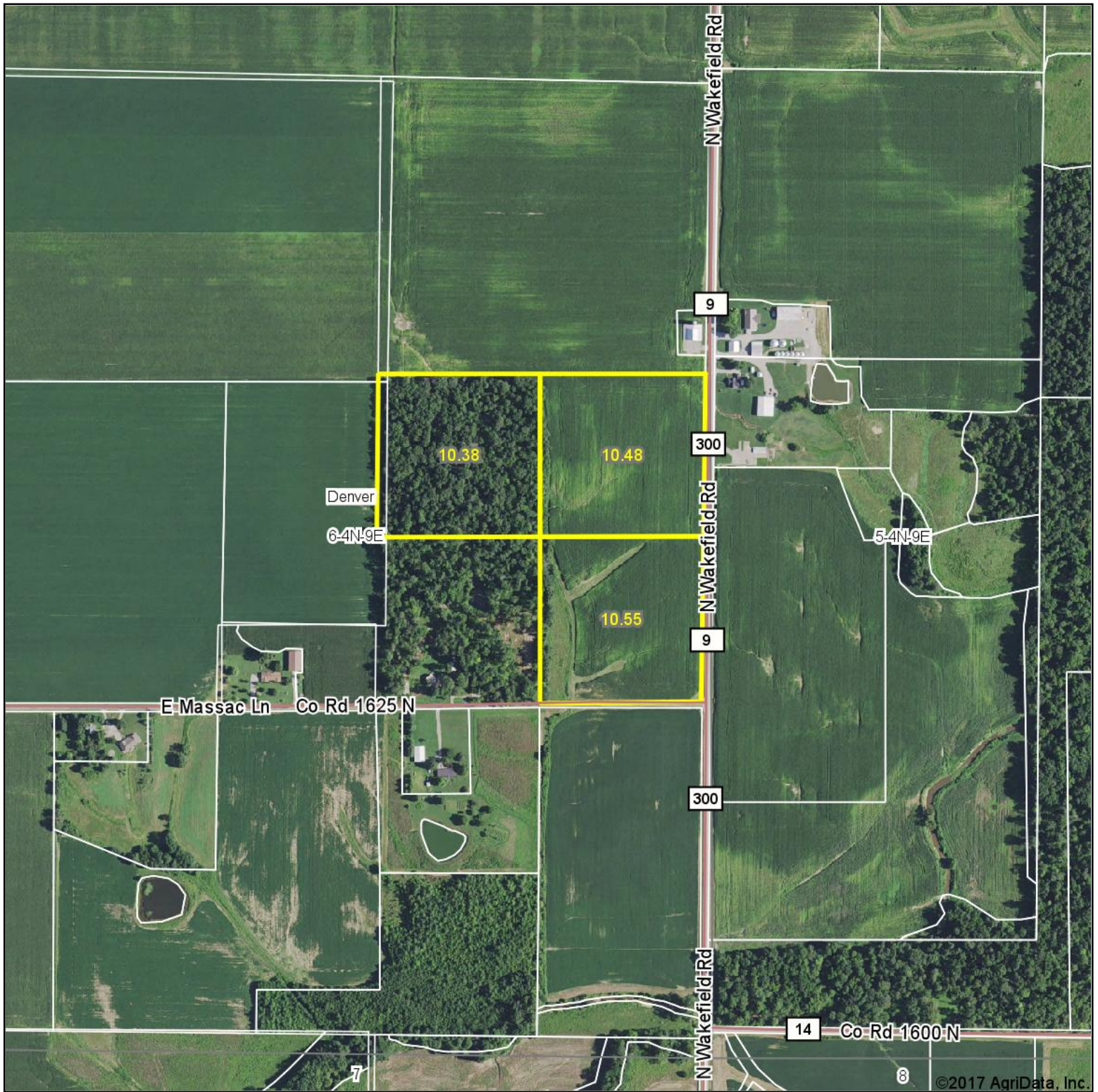


Aerial Map



map center: 38° 48' 34.14, -88° 14' 46.54

0ft 643ft 1286ft



Maps Provided By:

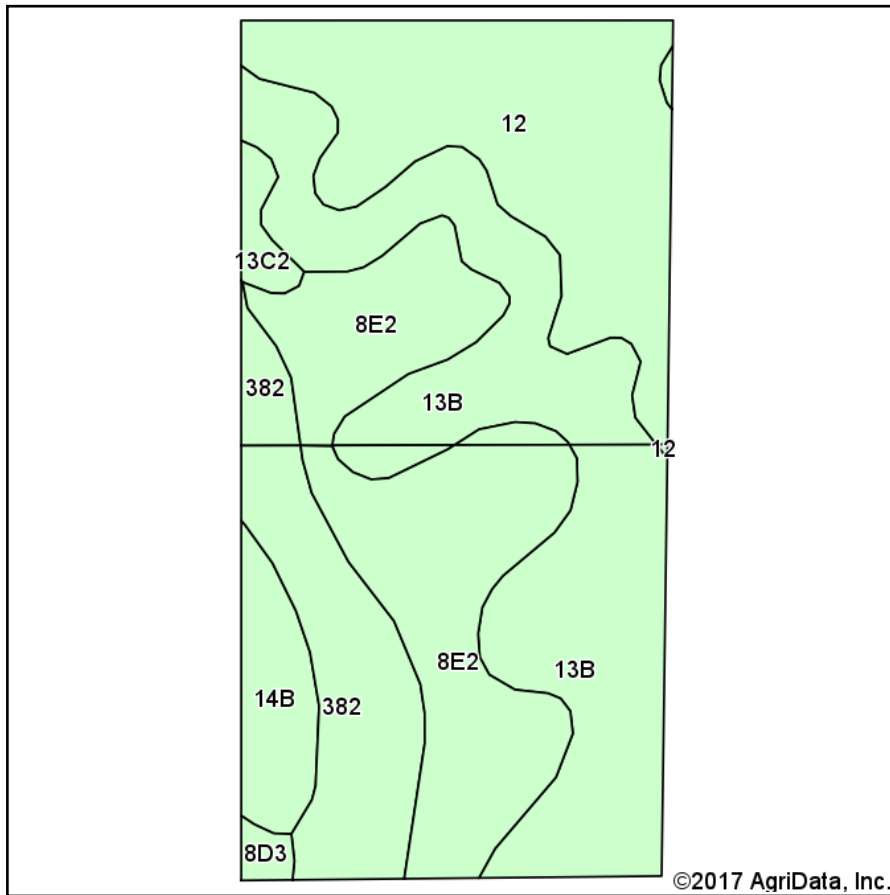


6-4N-9E
Richland County
Illinois

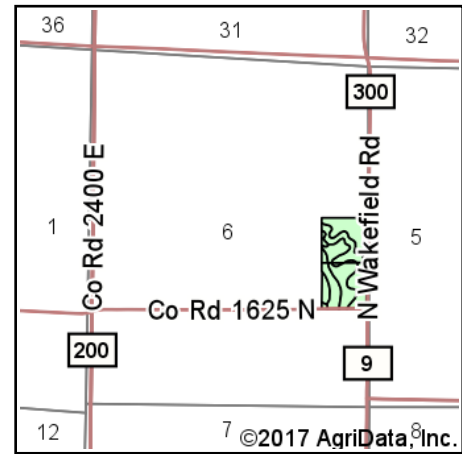


6/21/2017

Soils Map



Soils data provided by USDA and NRCS.



State: **Illinois**
 County: **Richland**
 Location: **6-4N-9E**
 Township: **Denver**
 Acres: **21.03**
 Date: **6/21/2017**



Maps Provided By:

 © AgriData, Inc. 2017 www.AgriDataInc.com



Area Symbol: IL159. Soil Area Version: 8

Code	Soil Description	Acres	Percent of field	Il. State Productivity Index Legend	Corn Bu/A	Soybeans Bu/A	Wheat Bu/A	Grass-legume e hay, T/A	Crop productivity index for optimum management
**13B	Bluford silt loam, 2 to 5 percent slopes	6.72	32.0%		**135	**44	**54	**3.36	**100
**8E2	Hickory silt loam, 10 to 18 percent slopes, eroded	5.31	25.2%		**108	**36	**44	0.00	**82
12	Wynooose silt loam, 0 to 2 percent slopes	4.82	22.9%		128	42	51	4.26	97
382	Belknap silt loam, 0 to 2 percent slopes, frequently flooded	2.70	12.8%		156	52	63	4.89	117
**14B	Ava silt loam, 2 to 5 percent slopes	1.04	4.9%		**134	**44	**54	0.00	**99
**13C2	Bluford silt loam, 4 to 7 percent slopes, eroded	0.29	1.4%		**126	**41	**51	**3.15	**94
**8D3	Hickory clay loam, 10 to 18 percent slopes, severely eroded	0.15	0.7%		**98	**33	**40	0.00	**75
Weighted Average					128.8	42.4	51.8	2.72	96.6

Table: Optimum Crop Productivity Ratings for Illinois Soil by K.R. Olson and J.M. Lang, Office of Research, ACES, University of Illinois at Champaign-Urbana. Version: 1/2/2012 Amended Table S2 B811

Crop yields and productivity indices for optimum management (B811) are maintained at the following NRES web site:

<https://www.ideals.illinois.edu/handle/2142/1027/>

** Indexes adjusted for slope and erosion according to Bulletin 811 Table S3

e Soils in the well drained group were not rated for grass-legume and are shown with a zero "0".

Soils data provided by USDA and NRCS. Soils data provided by University of Illinois at Champaign-Urbana.

*c: Using Capabilities Class Dominant Condition Aggregation Method