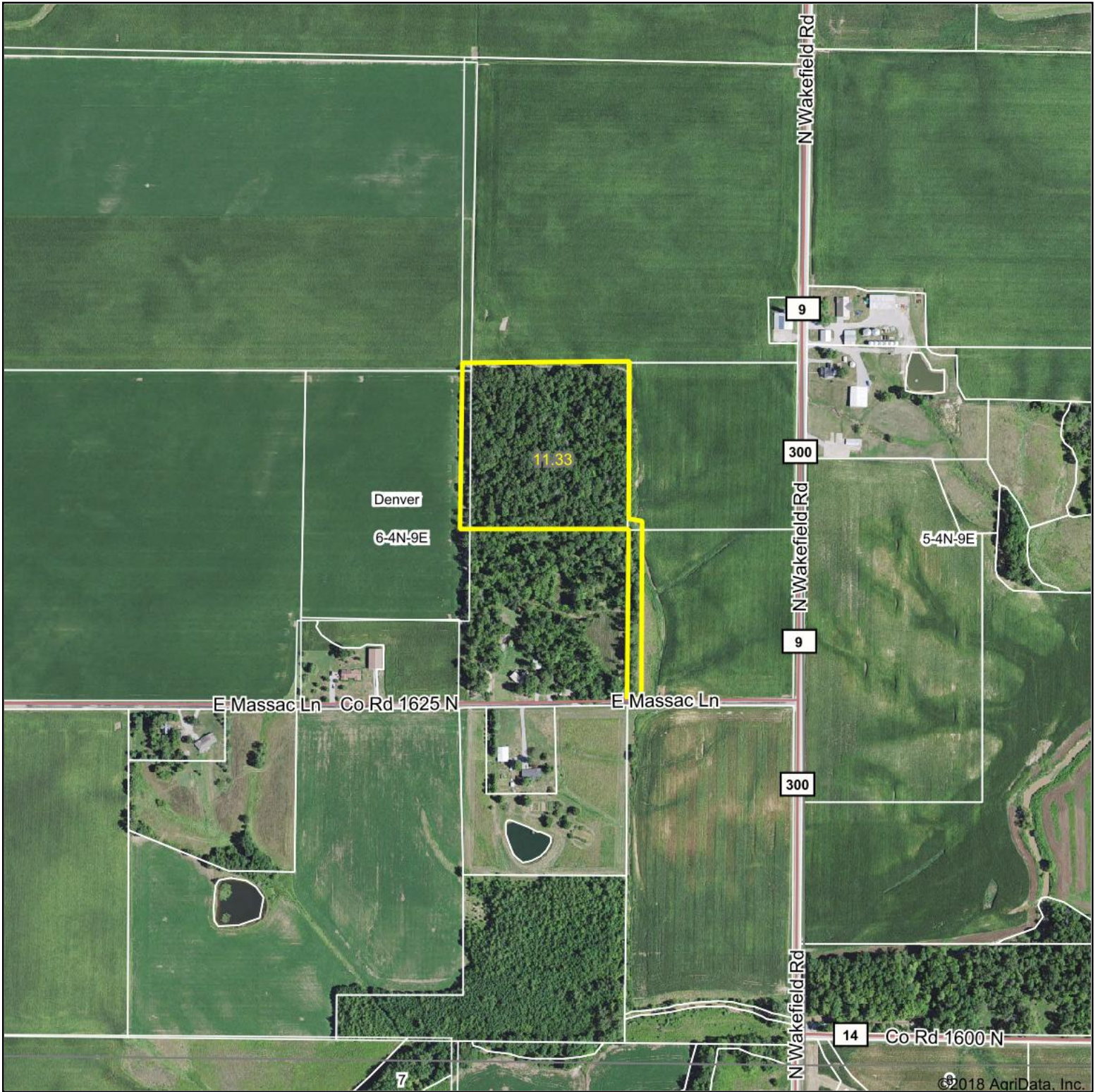


Aerial Map



map center: 38° 48' 33.86, -88° 14' 51.04

0ft 627ft 1253ft



Maps Provided By:



© AgriData, Inc. 2018

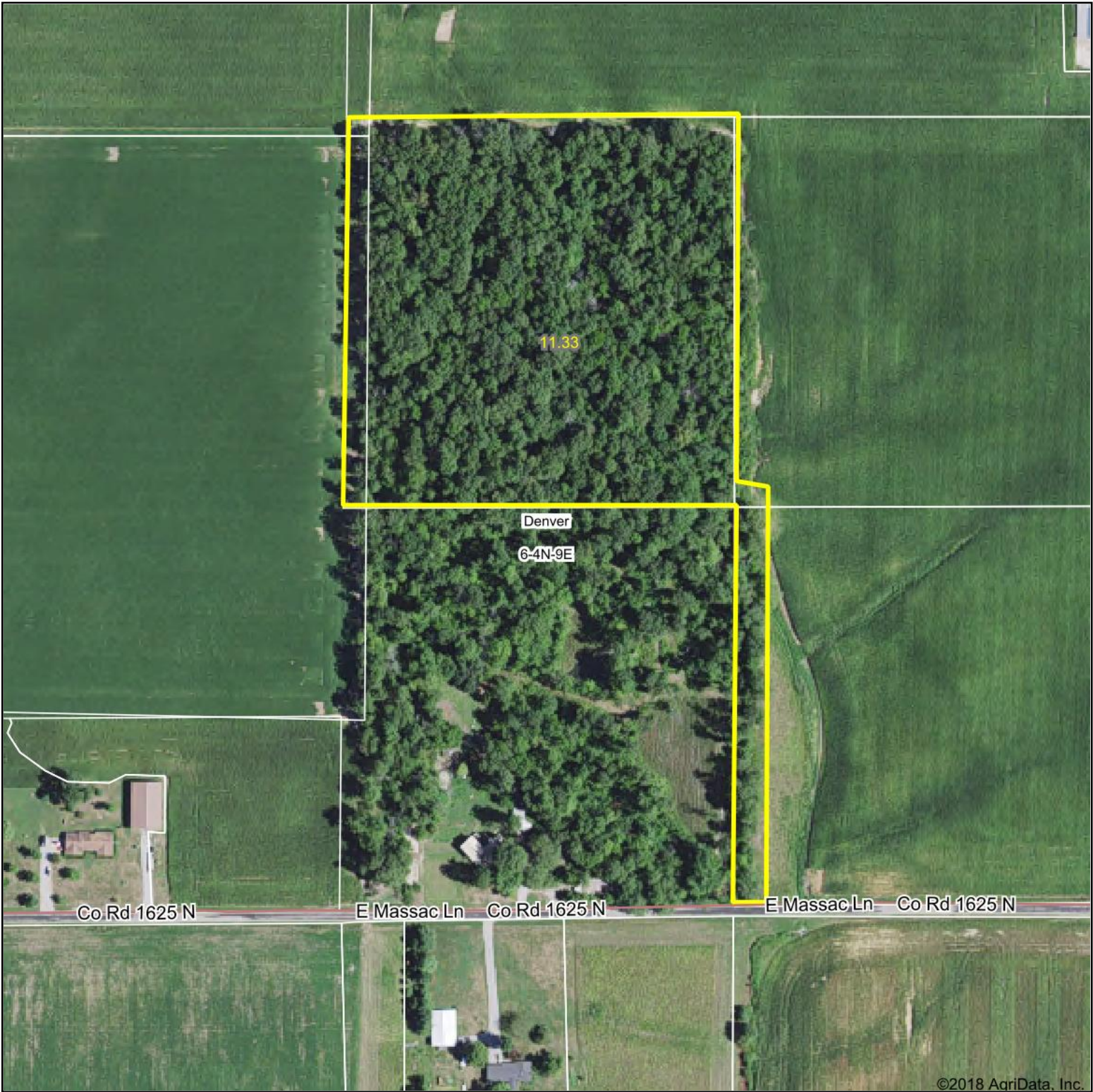
www.AgriDataInc.com

6-4N-9E
Richland County
Illinois



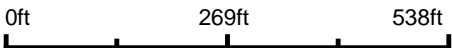
4/5/2018

Aerial Map



©2018 AgriData, Inc.

map center: 38° 48' 33.86, -88° 14' 51.04



Maps Provided By:
surety
CUSTOMIZED ONLINE MAPPING
© AgriData, Inc. 2018 www.AgriDataInc.com

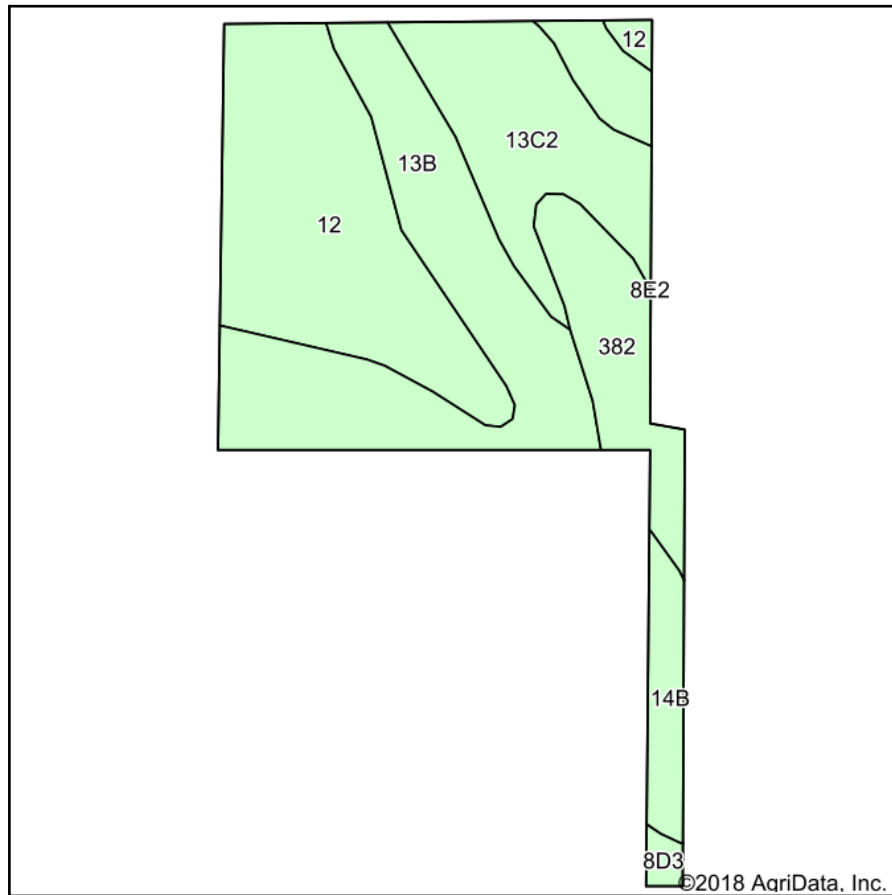
6-4N-9E
Richland County
Illinois



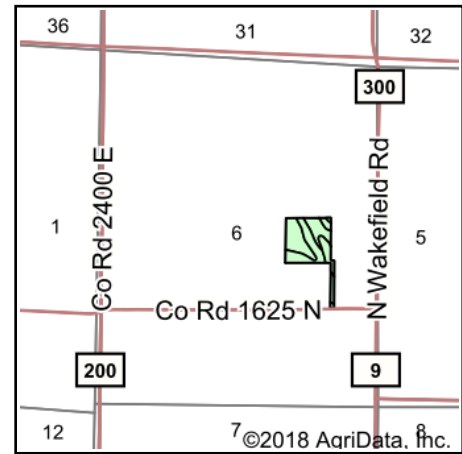
4/5/2018

Field borders provided by Farm Service Agency as of 5/21/2008. Soils data provided by University of Illinois at Champaign-Urbana.

Soils Map



Soils data provided by USDA and NRCS.



State: **Illinois**
 County: **Richland**
 Location: **6-4N-9E**
 Township: **Denver**
 Acres: **11.33**
 Date: **4/5/2018**



Maps Provided By:

 CUSTOMIZED ONLINE MAPPING
 © AgriData, Inc. 2018 www.AgriDataInc.com



Area Symbol: IL159, Soil Area Version: 9

Code	Soil Description	Acres	Percent of field	Il. State Productivity Index Legend	Corn Bu/A	Soybeans Bu/A	Wheat Bu/A	Grass-legume e hay, T/A	Crop productivity index for optimum management
**13B	Bluford silt loam, 2 to 5 percent slopes	3.78	33.4%		**135	**44	**54	**3.36	**100
12	Wynoose silt loam, 0 to 2 percent slopes	3.57	31.5%		128	42	51	4.26	97
**13C2	Bluford silt loam, 4 to 7 percent slopes, eroded	2.05	18.1%		**126	**41	**51	**3.15	**94
382	Belknap silt loam, 0 to 2 percent slopes, frequently flooded	1.25	11.0%		156	52	63	4.89	117
**14B	Ava silt loam, 2 to 5 percent slopes	0.57	5.0%		**134	**44	**54	0.00	**99
**8D3	Hickory clay loam, 10 to 18 percent slopes, severely eroded	0.11	1.0%		**98	**33	**40	0.00	**75
Weighted Average					133.1	43.6	53.4	3.57	99.6

Table: Optimum Crop Productivity Ratings for Illinois Soil by K.R. Olson and J.M. Lang, Office of Research, ACES, University of Illinois at Champaign-Urbana. Version: 1/2/2012 Amended Table S2 B811

Crop yields and productivity indices for optimum management (B811) are maintained at the following NRES web site: <http://soilproductivity.nres.illinois.edu/>

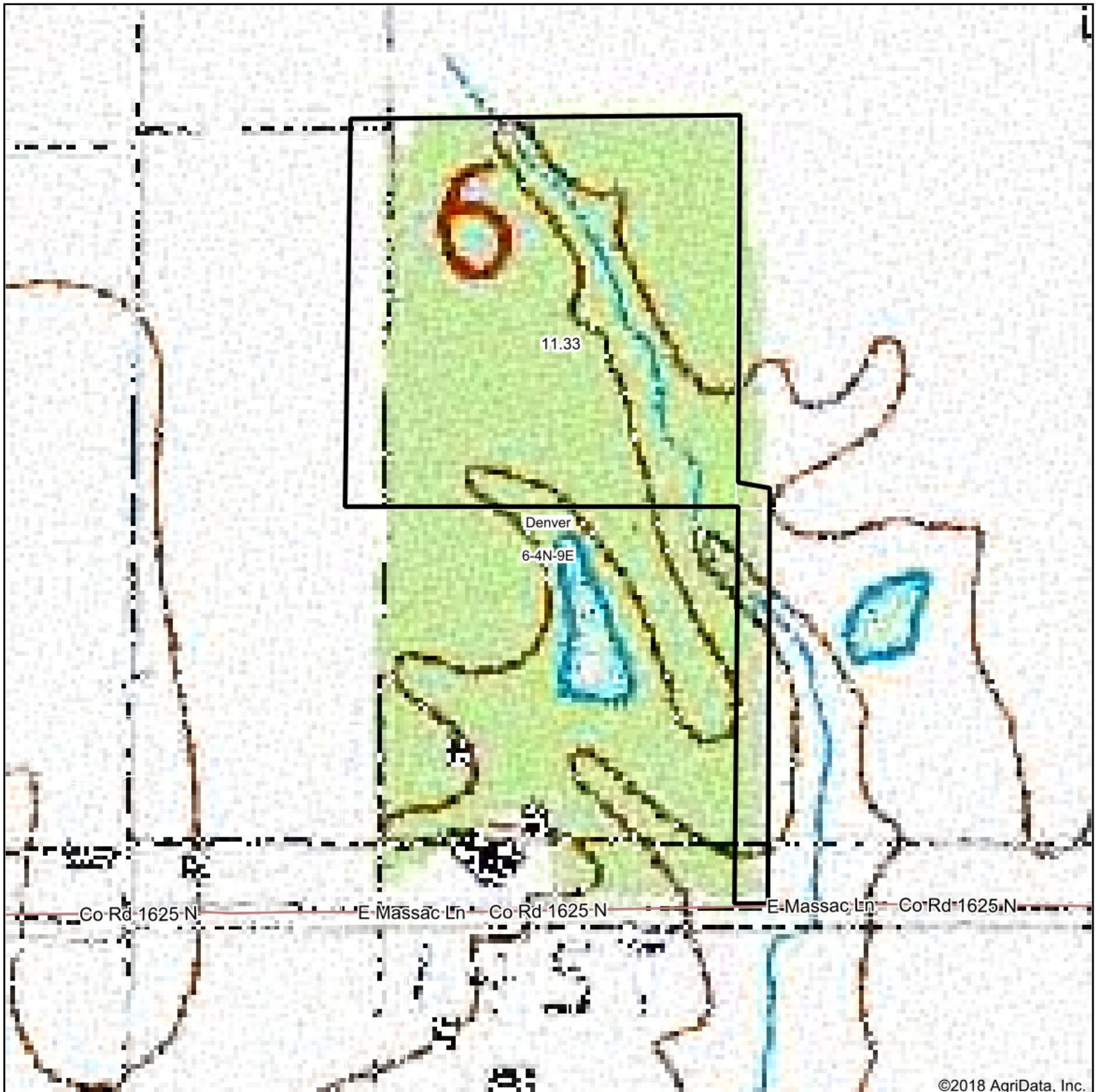
** Indexes adjusted for slope and erosion according to Bulletin 811 Table S3

e Soils in the well drained group were not rated for grass-legume and are shown with a zero "0".

Soils data provided by USDA and NRCS. Soils data provided by University of Illinois at Champaign-Urbana.

*c: Using Capabilities Class Dominant Condition Aggregation Method

Topography Map



©2018 AgriData, Inc.

map center: 38° 48' 33.86, -88° 14' 51.04

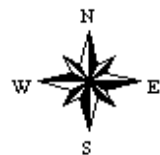
0ft 269ft 538ft



Maps Provided By:



6-4N-9E
Richland County
Illinois



4/5/2018