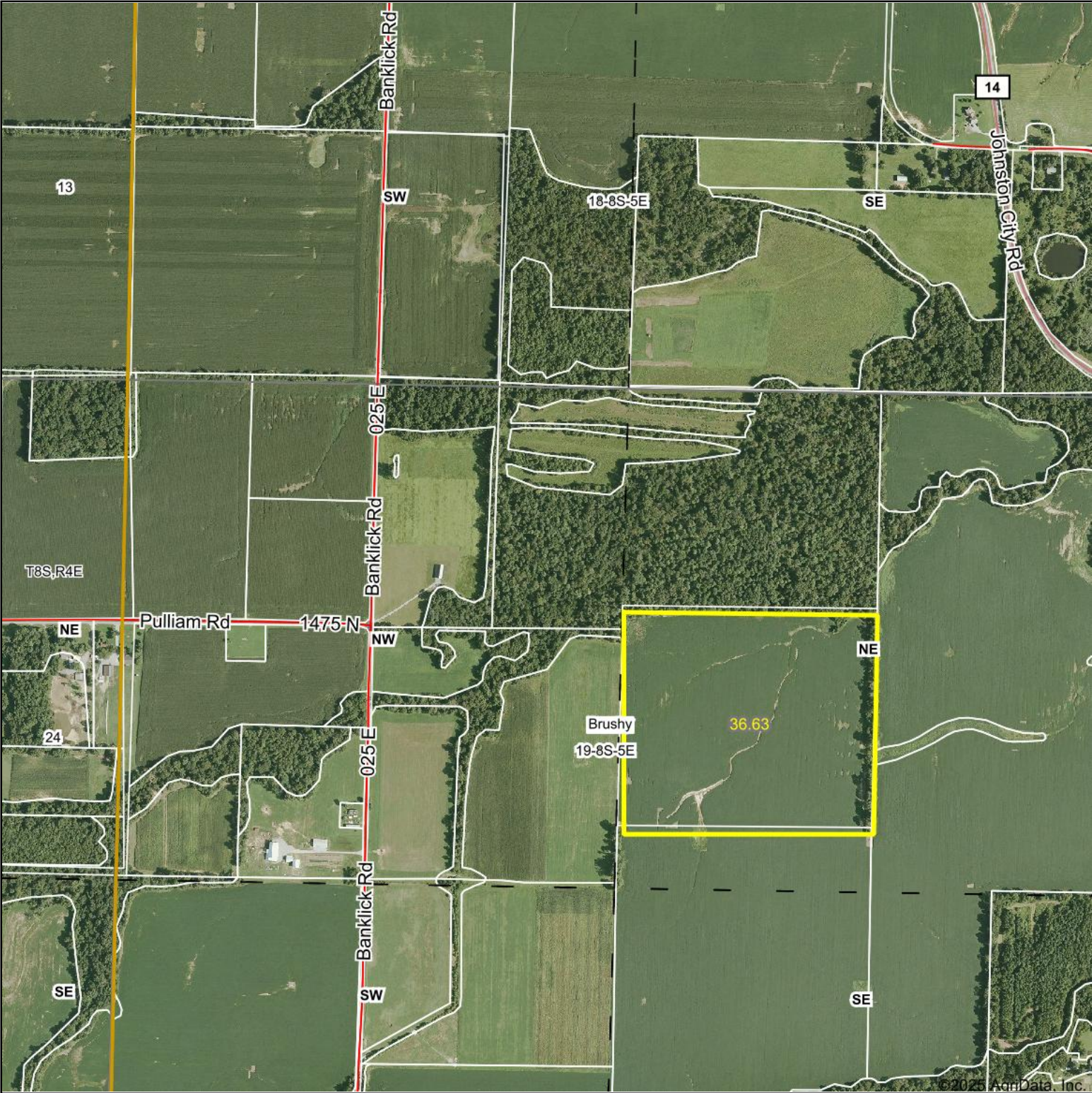


Aerial Map



Boundary Center: 37° 48' 53.27, -88° 41' 43.19



19-8S-5E
Saline County
Illinois

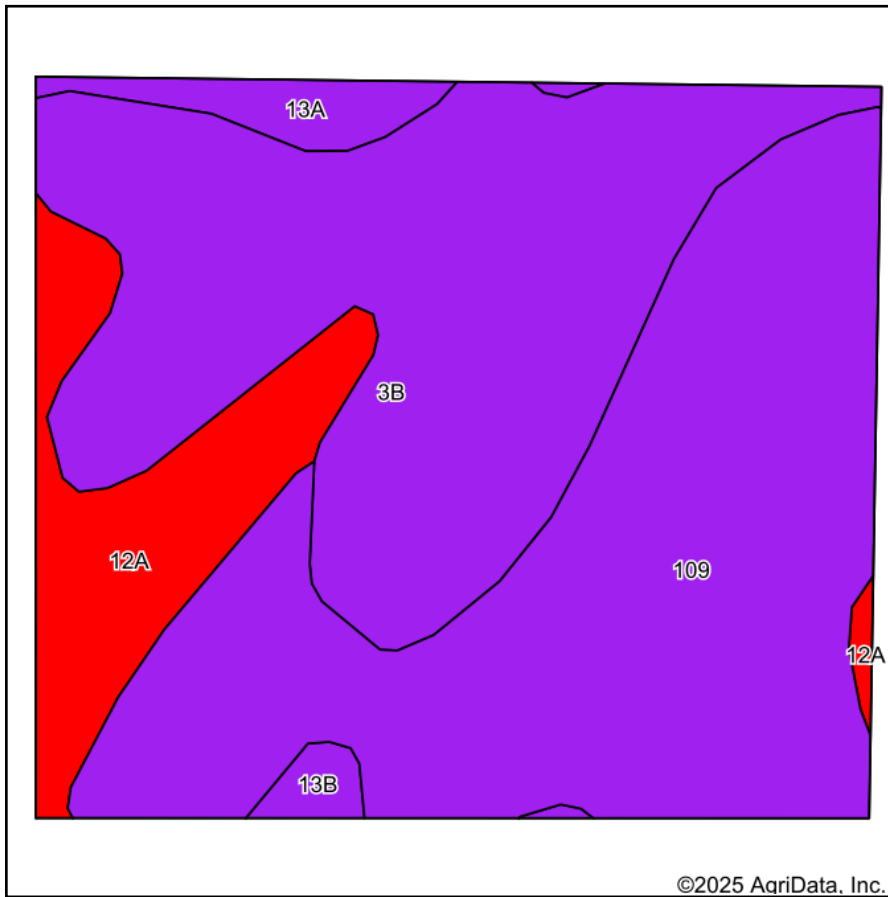


Maps Provided By:
 **surety**[®]
CUSTOMIZED ONLINE MAPPING
© AgriData, Inc. 2023 www.AgriDataInc.com

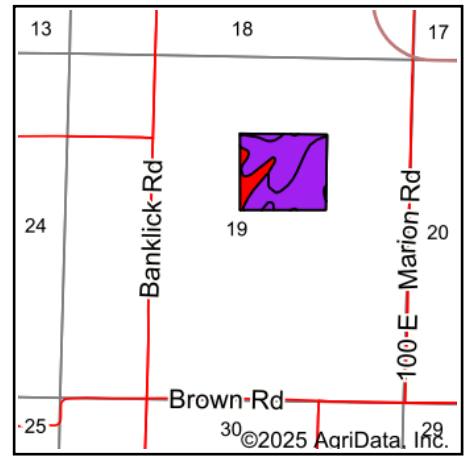
4/30/2025

Field borders provided by Farm Service Agency as of 5/21/2008.

Soils Map



Soils data provided by USDA and NRCS.



State: **Illinois**
 County: **Saline**
 Location: **19-8S-5E**
 Township: **Brushy**
 Acres: **36.63**
 Date: **4/30/2025**



Maps Provided By:

 © AgriData, Inc. 2023 www.AgriDataInc.com



Area Symbol: IL165, Soil Area Version: 19

Code	Soil Description	Acres	Percent of field	Il. State Productivity Index Legend	Corn Bu/A	Soybeans Bu/A	Wheat Bu/A	Grass-legume e hay, T/A	Crop productivity index for optimum management	*n NCCPI Soybeans
109	Racoon silt loam	16.47	45.0%		144	46	56	4.00	106	69
**3B	Hoyleton silt loam, 1 to 4 percent slopes	14.32	39.1%		**145	**46	**57	**5.00	**107	65
12A	Wynoose silt loam, 0 to 2 percent slopes	4.41	12.0%		128	42	51	4.00	97	49
13A	Bluford silt loam, 0 to 2 percent slopes	1.03	2.8%		136	44	55	3.00	101	62
**13B	Bluford silt loam, 2 to 5 percent slopes	0.40	1.1%		**135	**44	**54	**3.00	**100	62
Weighted Average					142.1	45.4	55.7	4.4	105.1	*n 64.8

Table: Optimum Crop Productivity Ratings for Illinois Soil EFOTG are sourced from Bulletin 811 calculated Map Unit Base Yield Indices, and adjusted (Adj) for slope, erosion, flooding, and surface texture. Publication Date: 01-28-2025

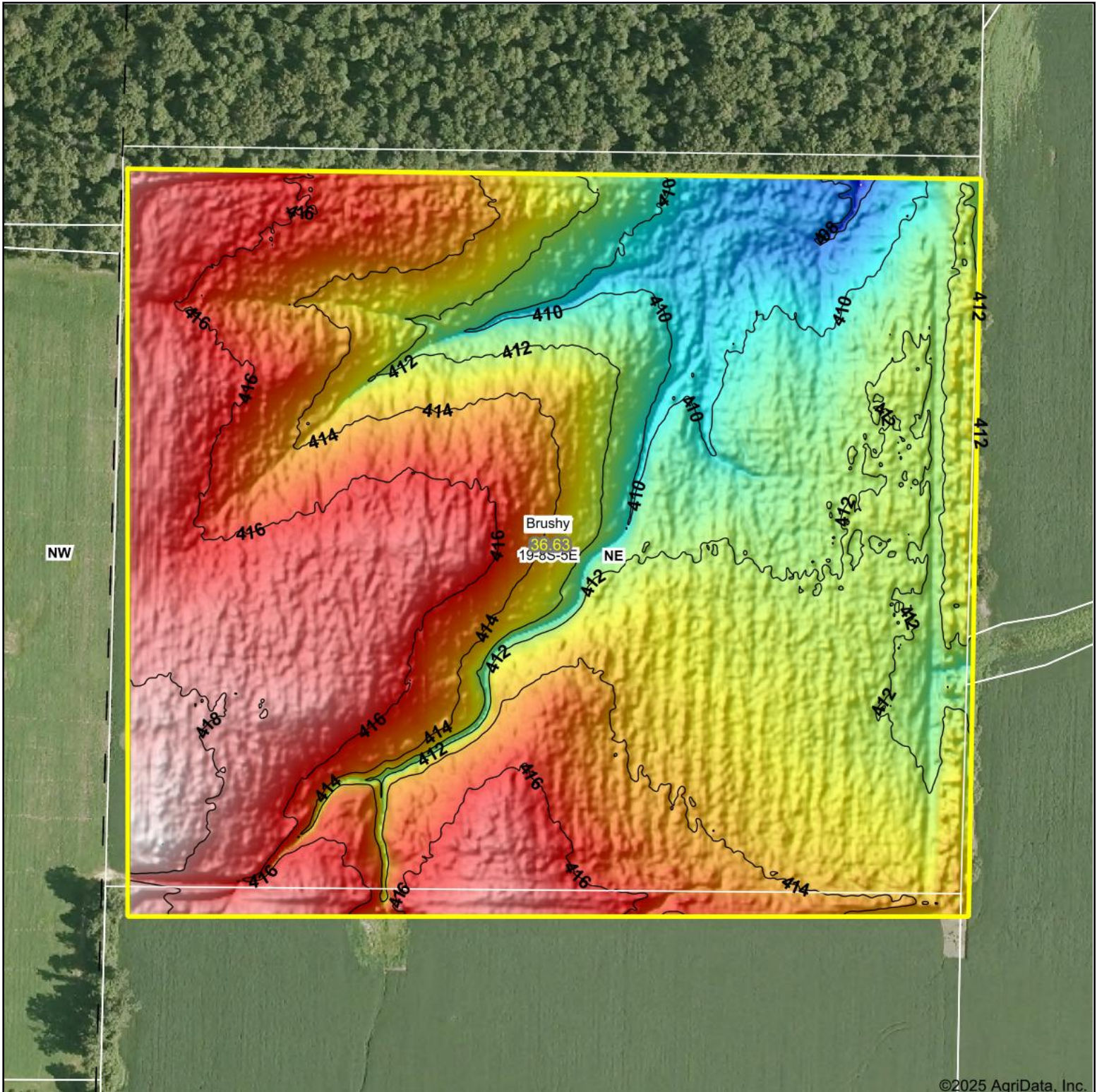
Crop yields and productivity (B811 EFOTG) are maintained at the following USDA web site: 2023 Illinois Soil Productivity and Yield Indices: <https://efotg.sc.egov.usda.gov/#/state/IL/documents/section=2&folder=52809>

** Base indexes from Bulletin 811 adjusted for slope, erosion, flooding, and surface texture according to the Il. Soils EFOTG

e Soils in the well drained group were not rated for grass-legume and are shown with a zero "0".

*n: The aggregation method is "Weighted Average using all components"

Topography Hillshade



©2025 AgriData, Inc.



Source: USGS 1 meter dem

Interval(ft): 2

Min: 406.7

Max: 419.2

Range: 12.5

Average: 413.9

Standard Deviation: 2.53 ft



4/30/2025

19-8S-5E
Saline County
Illinois

Boundary Center: 37° 48' 53.27, -88° 41' 43.19



Maps Provided By:

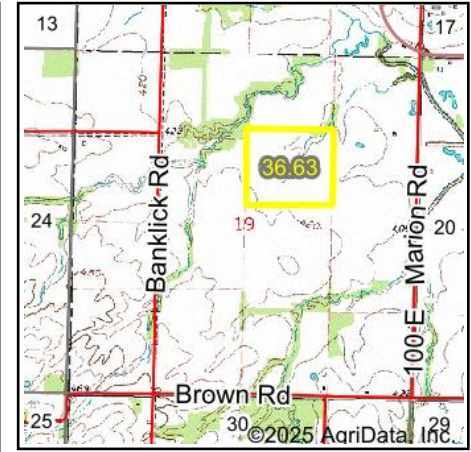


© AgriData, Inc. 2023

www.AgriDataInc.com

Field borders provided by Farm Service Agency as of 5/21/2008.

Wetlands Map



State: **Illinois**
 Location: **19-8S-5E**
 County: **Saline**
 Township: **Brushy**
 Date: **4/30/2025**



Maps Provided By:



0ft 405ft 809ft

	Classification Code	Type	Acres
	R4SBC	Riverine	0.47
	PFO1A	Freshwater Forested/Shrub Wetland	0.05
	Total Acres		0.52

Data Source: National Wetlands Inventory website. U.S. DoI, Fish and Wildlife Service, Washington, D.C. <http://www.fws.gov/wetlands/>