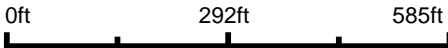


Aerial Map



©2024 AgriData, Inc.

Boundary Center: 39° 3' 14.85, -88° 56' 55.9



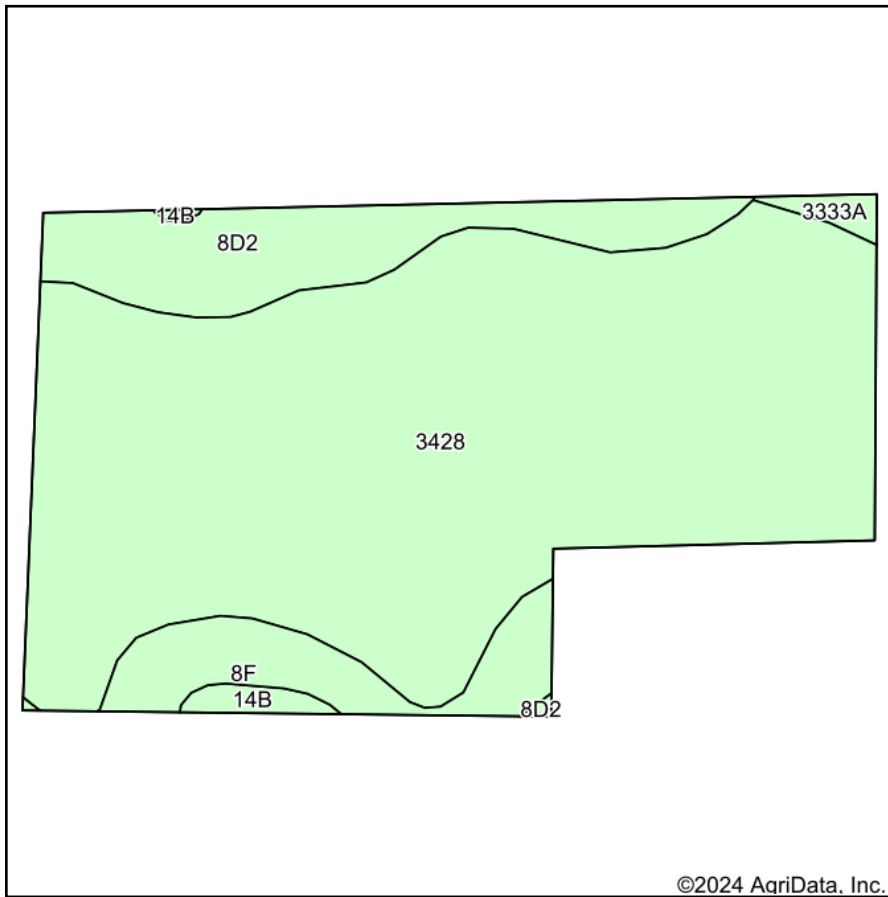
14-7N-2E
Fayette County
Illinois



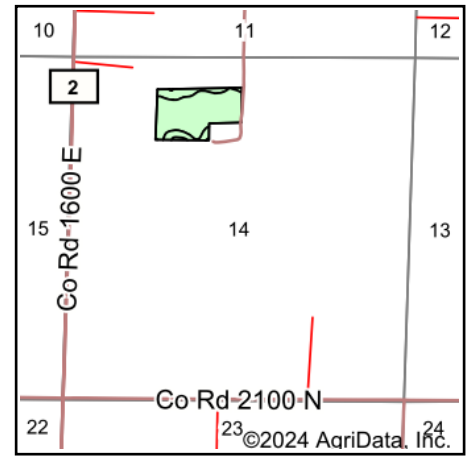
Maps Provided By:
 **surety**
CUSTOMIZED ONLINE MAPPING
© AgriData, Inc. 2023 www.AgriDataInc.com

7/9/2024

Soils Map



Soils data provided by USDA and NRCS.



State: **Illinois**
 County: **Fayette**
 Location: **14-7N-2E**
 Township: **Sefton**
 Acres: **21.03**
 Date: **7/9/2024**



Maps Provided By:



© AgriData, Inc. 2023

www.AgriDataInc.com



Area Symbol: IL051, Soil Area Version: 19

Code	Soil Description	Acres	Percent of field	Corn Bu/A	Soybeans Bu/A	Wheat Bu/A	Grass-legume e hay, T/A	Crop productivity index for optimum management	*n NCCPI Soybeans
**3428	Coffeen silt loam, frequently flooded	16.60	79.0%	**163	**51	**61	**4.90	**119	84
**8D2	Hickory silt loam, 10 to 18 percent slopes, eroded	2.52	12.0%	**107	**37	**44	**3.60	**82	57
**8F	Hickory silt loam, 18 to 35 percent slopes	1.52	7.2%	**89	**30	**36	**3.00	**68	14
**14B	Ava silt loam, 2 to 5 percent slopes	0.22	1.0%	**134	**44	**54	**3.30	**99	55
**3333A	Wakeland silt loam, 0 to 2 percent slopes, frequently flooded	0.17	0.8%	**157	**50	**61	**4.60	**115	79
Weighted Average				150.6	47.7	57.1	4.6	110.6	*n 75.4

Table: Optimum Crop Productivity Ratings for Illinois Soil EFOTG are sourced from Bulletin 811 calculated Map Unit Base Yield Indices, and adjusted (Adj) for slope, erosion, flooding, and surface texture. Publication Date: 02-08-2023

Crop yields and productivity (B811 EFOTG) are maintained at the following USDA web site: 2023 Illinois Soil Productivity and Yield Indices: <https://efotg.sc.egov.usda.gov/#/state/IL/documents/section=2&folder=52809>

** Base indexes from Bulletin 811 adjusted for slope, erosion, flooding, and surface texture according to the Il. Soils EFOTG

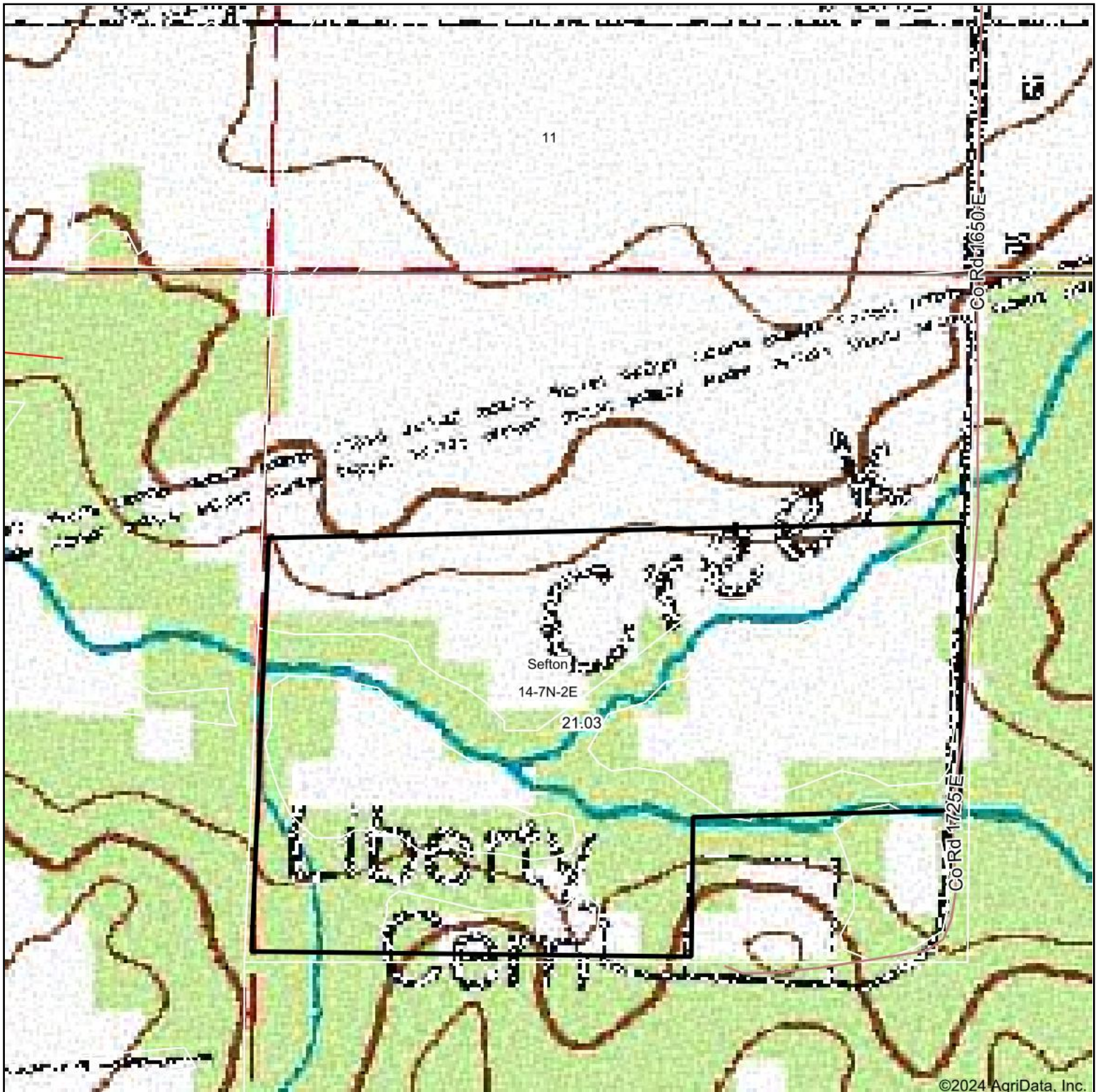
e Soils in the well drained group were not rated for grass-legume and are shown with a zero "0".

*n: The aggregation method is "Weighted Average using all components"

Topographic map of a golf course area. The map shows contour lines with elevations ranging from 524 to 558. A yellow rectangle highlights a specific area, and a red rectangle highlights a smaller area within it. A label 'Sefton' is present near the center of the highlighted area, with coordinates '21.03' and '14:7N-2E'. The map is overlaid on an aerial photograph of the golf course.

Field borders provided by Farm Service Agency as of 5/21/2008.

Topography Map



©2024 AgriData, Inc.

Map Center: 39° 3' 18.34, -88° 56' 57.44

0ft 292ft 585ft

14-7N-2E
Fayette County
Illinois



Maps Provided By:

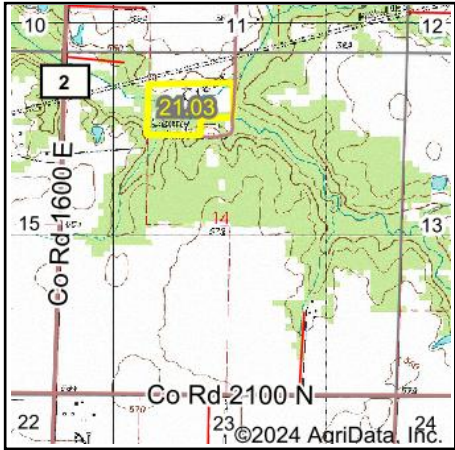


© AgriData, Inc. 2023

www.AgridataInc.com

Field borders provided by Farm Service Agency as of 5/21/2008.

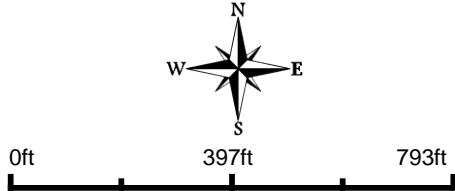
Wetlands Map



State: **Illinois**
Location: **14-7N-2E**
County: **Fayette**
Township: **Sefton**
Date: **7/9/2024**


Maps Provided By:

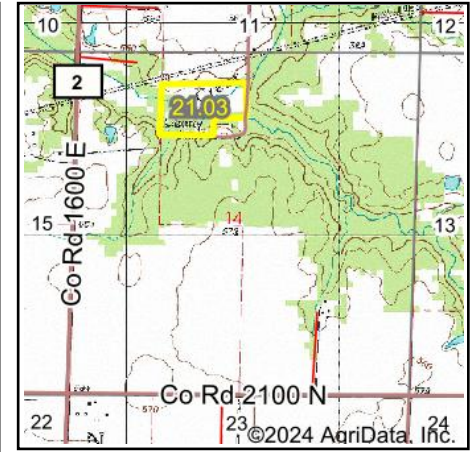
© AgriData, Inc. 2023 www.AgriDataInc.com



	Classification Code	Type	Acres
	PFO1A	Freshwater Forested/Shrub Wetland	2.63
	R4SBC	Riverine	0.15
		Total Acres	2.78

Data Source: National Wetlands Inventory website. U.S. Dol, Fish and Wildlife Service, Washington, D.C. <http://www.fws.gov/wetlands/>

Wetlands Map



State: **Illinois**
 Location: **14-7N-2E**
 County: **Fayette**
 Township: **Sefton**
 Date: **7/9/2024**

BUY A FARM
LAND & AUCTION COMPANY LLC
 Maps Provided By:
surety
 CUSTOMIZED ONLINE MAPPING
 © AgriData, Inc. 2023 www.AgriDataInc.com



0ft 397ft 793ft

Classification Code	Type	Acres
PFO1A	Freshwater Forested/Shrub Wetland	2.63
R4SBC	Riverine	0.15
Total Acres		2.78

Data Source: National Wetlands Inventory website. U.S. Dol, Fish and Wildlife Service, Washington, D.C. <http://www.fws.gov/wetlands/>