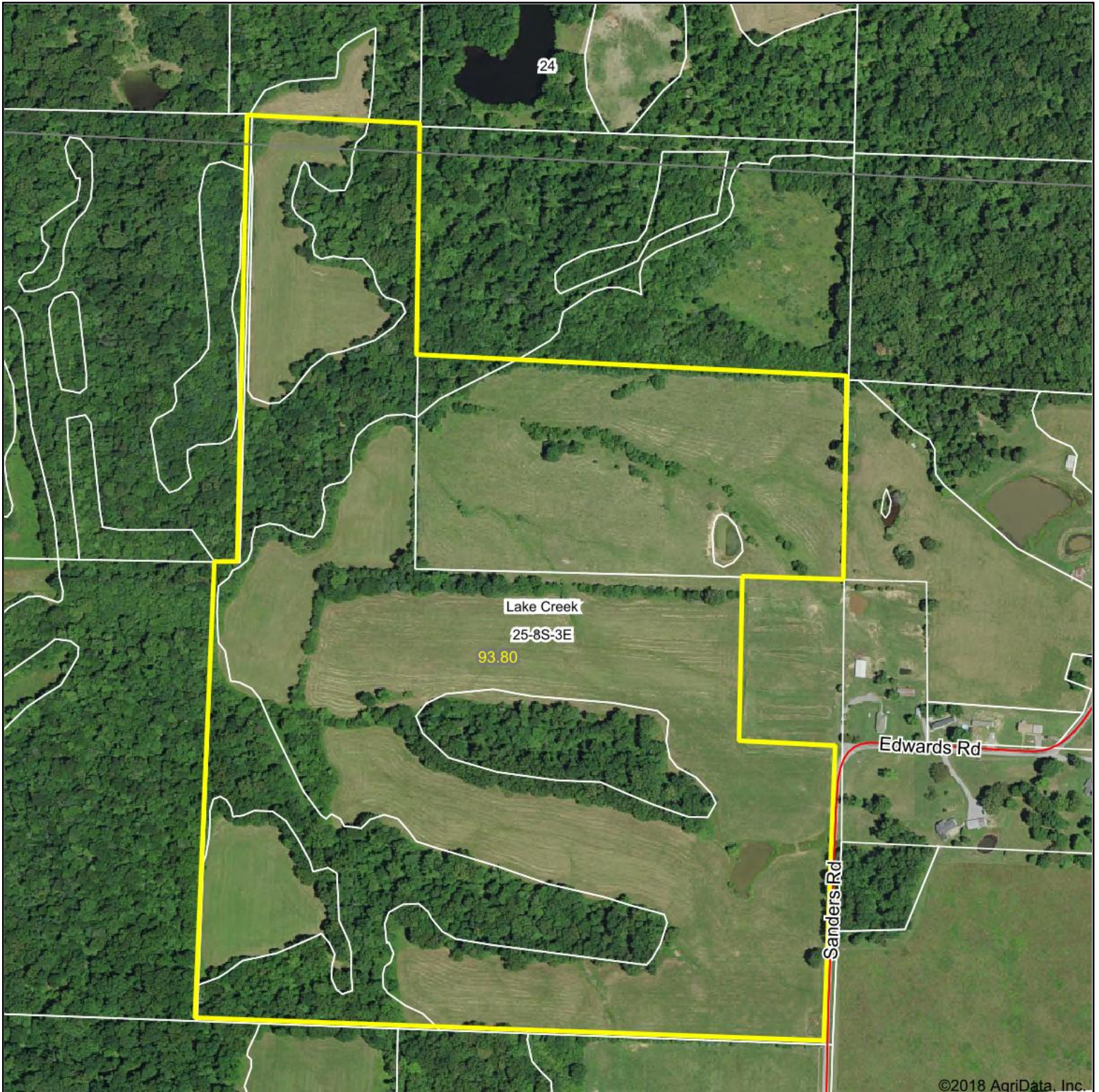


Aerial Map



map center: 37° 48' 5.83, -88° 49' 30.22

0ft 476ft 951ft



Maps Provided By:

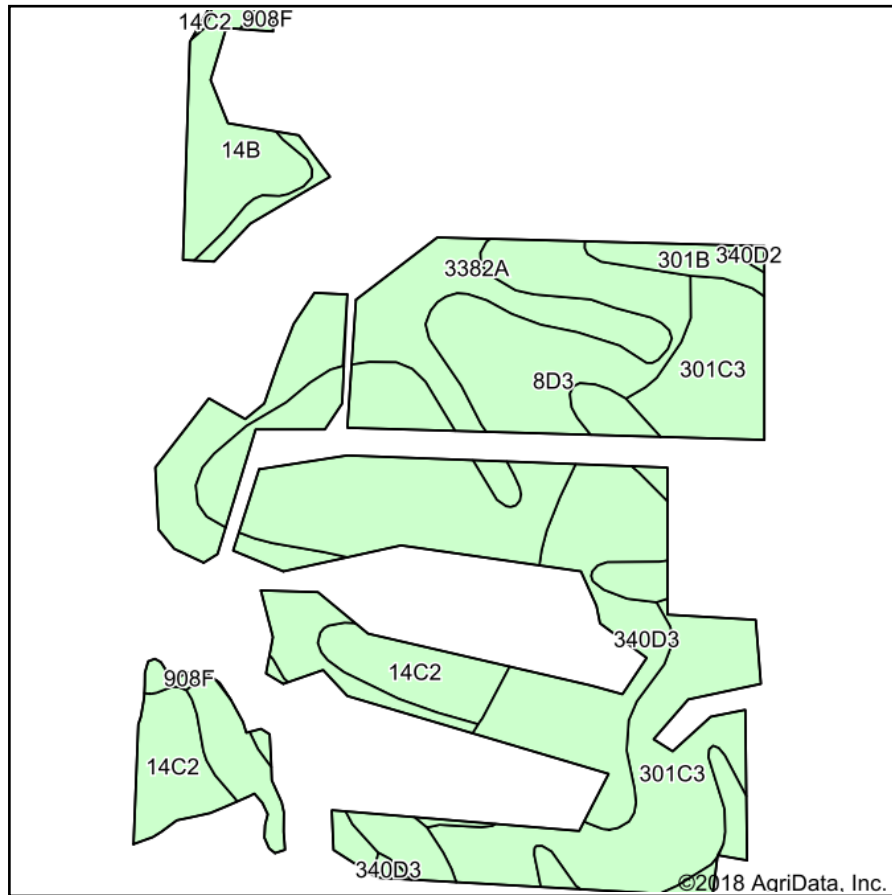


25-8S-3E
Williamson County
Illinois



7/23/2018

Soils Map



Soils data provided by USDA and NRCS.



State: **Illinois**
 County: **Williamson**
 Location: **25-8S-3E**
 Township: **Lake Creek**
 Acres: **56.03**
 Date: **7/23/2018**



Maps Provided By:
 **surety**
 CUSTOMIZED ONLINE MAPPING
 © AgriData, Inc. 2018 www.AgriDataInc.com



Area Symbol: IL199, Soil Area Version: 12

Code	Soil Description	Acres	Percent of field	II. State Productivity Index Legend	Corn Bu/A	Soybeans Bu/A	Wheat Bu/A	Crop productivity index for optimum management
**8D3	Hickory clay loam, 10 to 18 percent slopes, severely eroded	18.23	32.5%		**98	**33	**40	**75
**301C3	Grantsburg silt loam, 5 to 10 percent slopes, severely eroded	10.82	19.3%		**99	**34	**41	**75
3382A	Belknap silt loam, 0 to 2 percent slopes, frequently flooded	7.82	14.0%		156	52	63	117
**340D3	Zanesville silty clay loam, 10 to 18 percent slopes, severely eroded	6.42	11.5%		**86	**30	**37	**65
**14C2	Ava silt loam, 5 to 10 percent slopes, eroded	4.32	7.7%		**122	**40	**50	**90
**301B	Grantsburg silt loam, 2 to 5 percent slopes	4.23	7.5%		**133	**46	**54	**101
**14B	Ava silt loam, 2 to 5 percent slopes	3.13	5.6%		**134	**44	**54	**99
**908F	Hickory-Kell silt loams, 18 to 35 percent slopes	0.92	1.6%		**87	**29	**34	**67
**340D2	Zanesville silt loam, 10 to 18 percent slopes, eroded	0.14	0.2%		**104	**36	**45	**79
Weighted Average					111.3	37.6	45.6	84.1

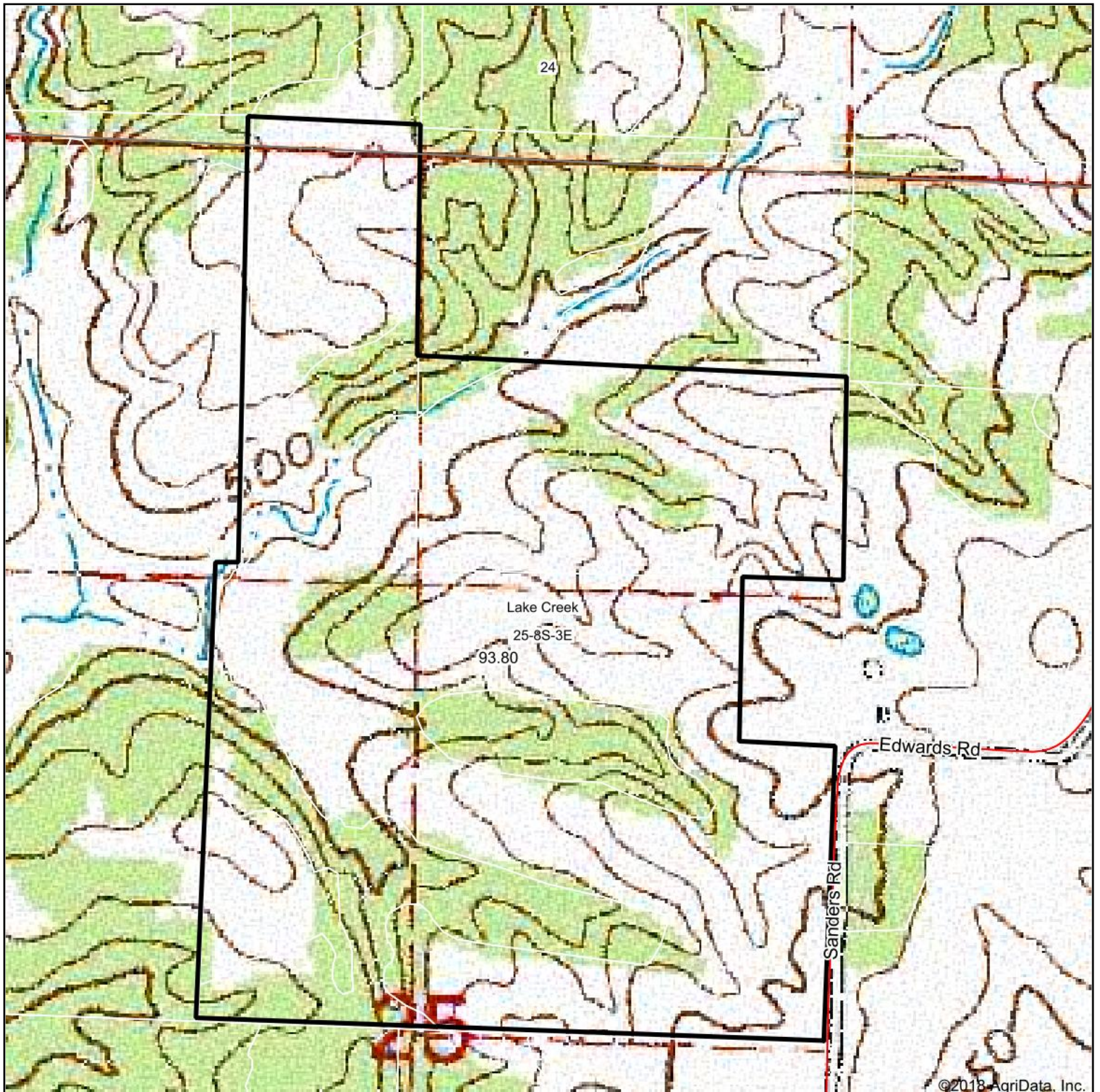
Table: Optimum Crop Productivity Ratings for Illinois Soil by K.R. Olson and J.M. Lang, Office of Research, ACES, University of Illinois at Champaign-Urbana. Version: 1/2/2012 Amended Table S2 B811

Crop yields and productivity indices for optimum management (B811) are maintained at the following NRES web site: <http://soilproductivity.nres.illinois.edu/>

** Indexes adjusted for slope and erosion according to Bulletin 811 Table S3

Soils data provided by USDA and NRCS. Soils data provided by University of Illinois at Champaign-Urbana.

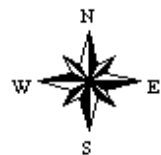
Topography Map



map center: 37° 48' 5.83, -88° 49' 30.22

0ft 476ft 951ft

25-8S-3E
Williamson County
Illinois



7/23/2018



Maps Provided By:



© Agridata, Inc. 2018

www.AgridataInc.com