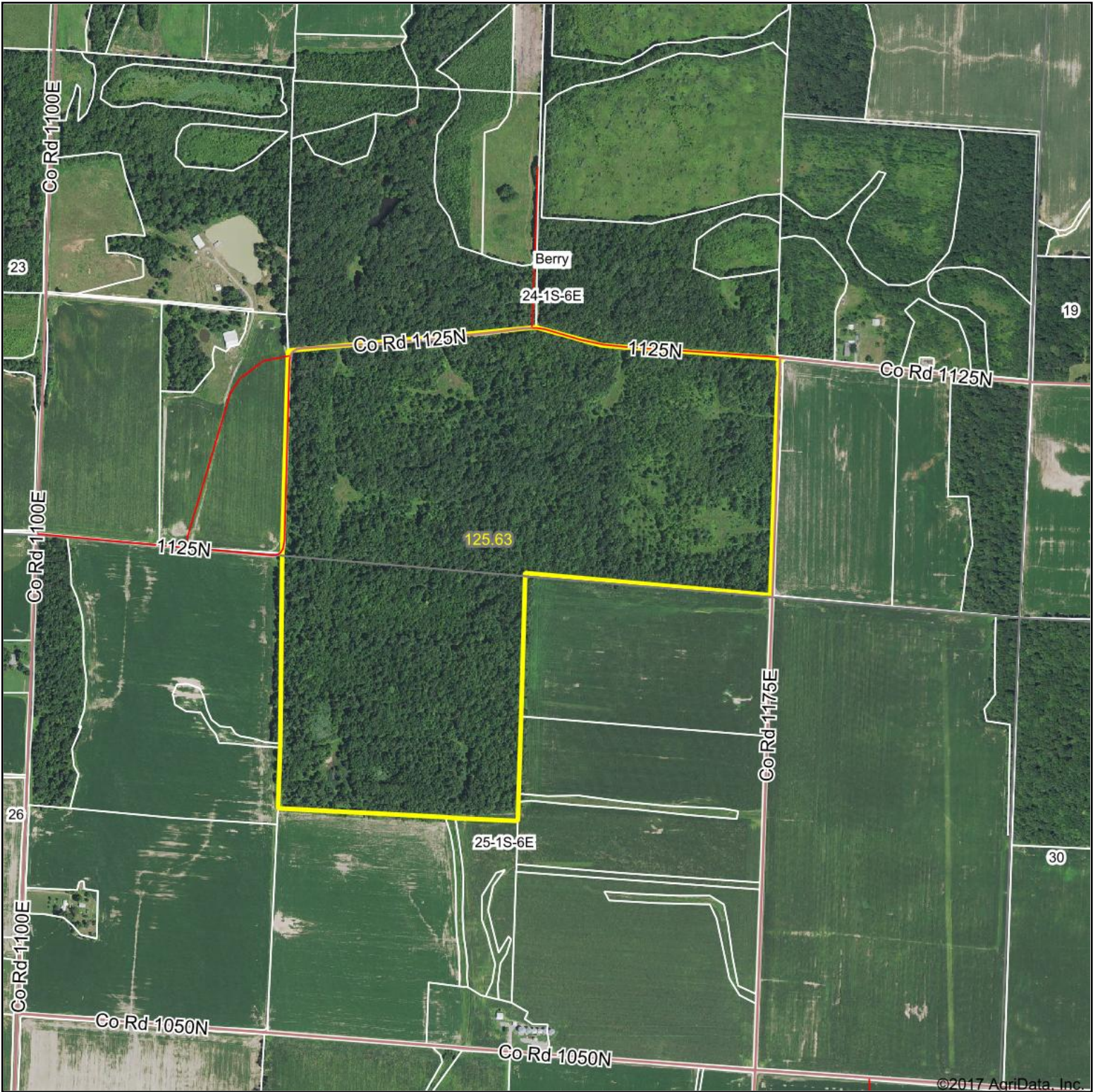
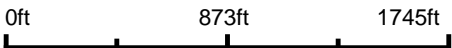


Aerial Map



©2017 AgriData, Inc.

map center: 38° 24' 55.18, -88° 28' 55.2



Maps Provided By:
 **surety**
CUSTOMIZED ONLINE MAPPING
© AgriData, Inc. 2017 www.AgriDataInc.com

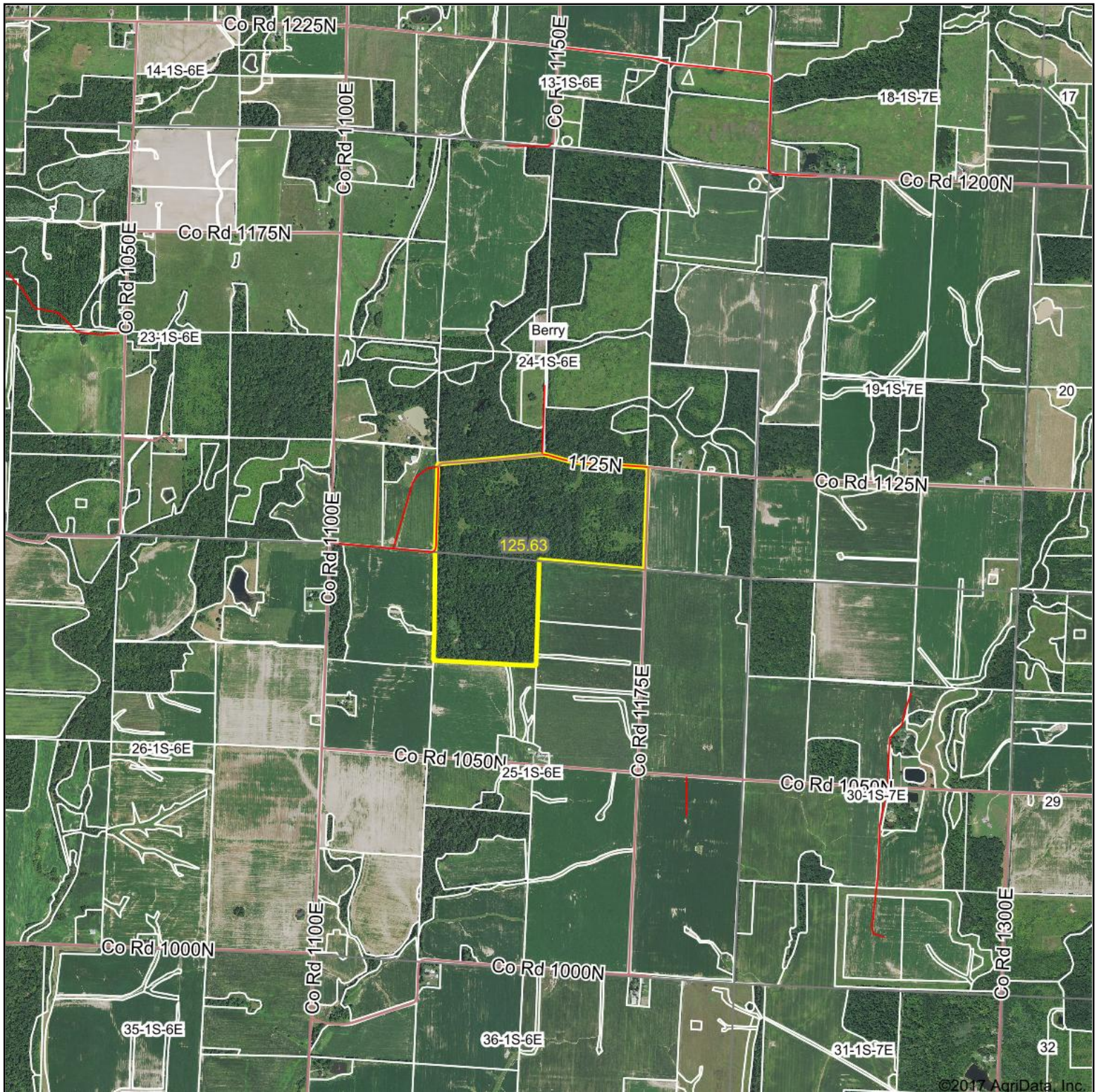
24-1S-6E
Wayne County
Illinois



10/6/2017

Field borders provided by Farm Service Agency as of 5/21/2008. Soils data provided by University of Illinois at Champaign-Urbana.

Aerial Map



©2017 AgriData, Inc.

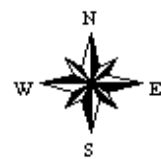


map center: 38° 24' 55.17, -88° 28' 55.18

0ft 2037ft 4075ft

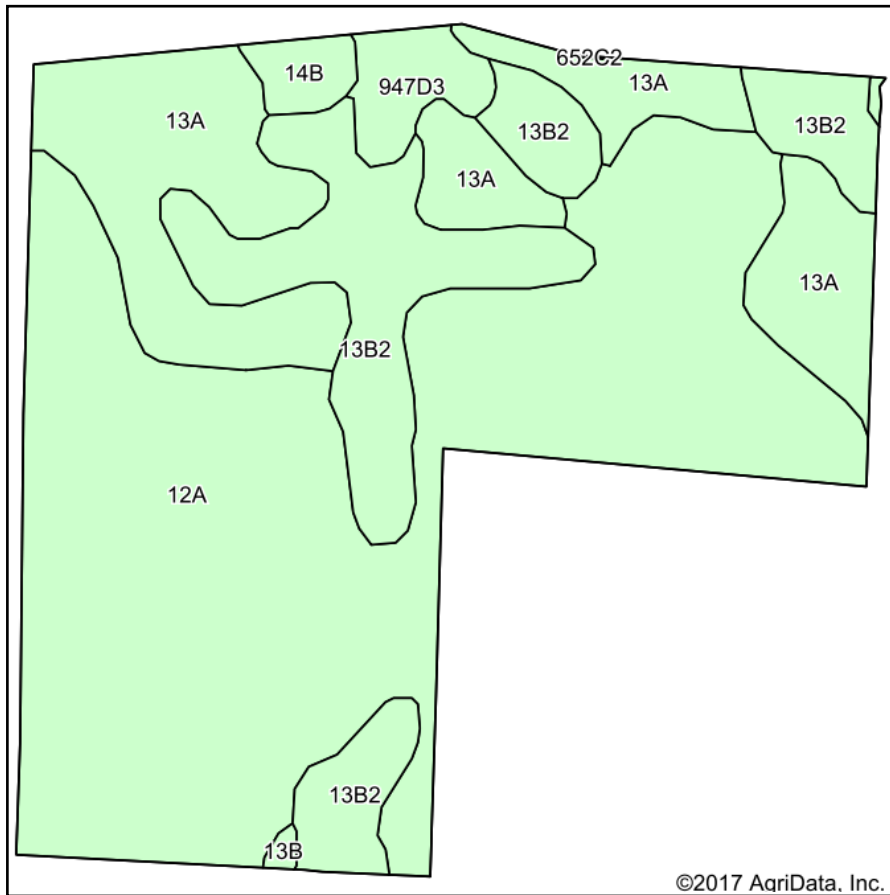
Maps Provided By:
 **surety**
 CUSTOMIZED ONLINE MAPPING
 © AgriData, Inc. 2017 www.AgriDataInc.com

24-1S-6E
Wayne County
Illinois

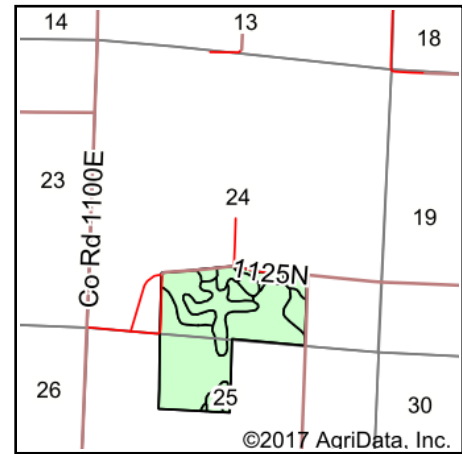


10/6/2017

Soils Map



Soils data provided by USDA and NRCS.



State: **Illinois**
 County: **Wayne**
 Location: **24-1S-6E**
 Township: **Berry**
 Acres: **125.63**
 Date: **10/6/2017**



Maps Provided By:



© AgriData, Inc. 2017

www.AgriDataInc.com



Area Symbol: IL191, Soil Area Version: 14

Code	Soil Description	Acres	Percent of field	Il. State Productivity Index Legend	Corn Bu/A	Soybeans Bu/A	Wheat Bu/A	Grass-legume e hay, T/A	Crop productivity index for optimum management
12A	Wynoose silt loam, 0 to 2 percent slopes	72.07	57.4%		128	42	51	4.26	97
13A	Bluford silt loam, 0 to 2 percent slopes	26.04	20.7%		136	44	55	3.39	101
**13B2	Bluford silt loam, 2 to 5 percent slopes, eroded	22.35	17.8%		**129	**42	**52	**3.22	**96
**947D3	Hickory-Passport clay loams, 10 to 18 percent slopes, severely eroded	3.20	2.5%		**109	**36	**45	**2.89	**80
**14B	Ava silt loam, 2 to 5 percent slopes	1.71	1.4%		**134	**44	**54	0.00	**99
**13B	Bluford silt loam, 2 to 5 percent slopes	0.26	0.2%		**135	**44	**54	**3.36	**100
Weighted Average					129.4	42.3	51.9	3.80	97.3

Table: Optimum Crop Productivity Ratings for Illinois Soil by K.R. Olson and J.M. Lang, Office of Research, ACES, University of Illinois at Champaign-Urbana. Version: 1/2/2012 Amended Table S2 B811

Crop yields and productivity indices for optimum management (B811) are maintained at the following NRES web site:

<https://www.ideals.illinois.edu/handle/2142/1027/>

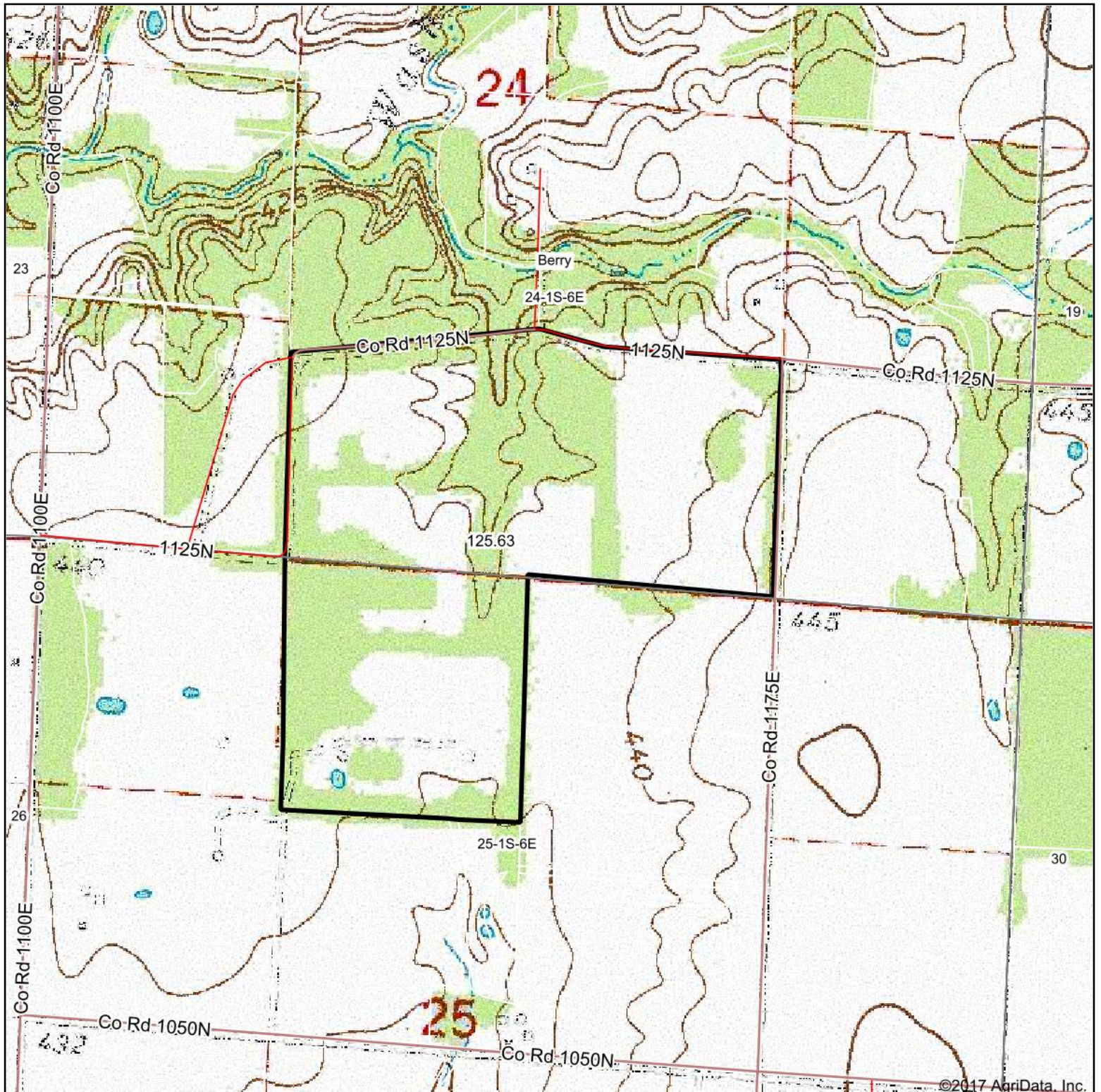
** Indexes adjusted for slope and erosion according to Bulletin 811 Table S3

e Soils in the well drained group were not rated for grass-legume and are shown with a zero "0".

Soils data provided by USDA and NRCS. Soils data provided by University of Illinois at Champaign-Urbana.

*c: Using Capabilities Class Dominant Condition Aggregation Method

Topography Map



map center: 38° 24' 55.18, -88° 28' 55.2

0ft 873ft 1745ft



Maps Provided By:



© AgriData, Inc. 2017

www.AgriDataInc.com

24-1S-6E
Wayne County
Illinois



10/6/2017