

PORTIONS OF SECTIONS 23, 24 AND 26 ALL IN TOWNSHIP 13 SOUTH, RANGE 2 WEST OF THE THIRD PRINCIPAL MERIDIAN.

PLAT OF SURVEY

PARENT PARCEL IS: CAROL G. PRIEB TRUST, RECORD BOOK #195, PAGES #206 - 209, UNION COUNTY ILLINOIS

DESCRIPTIONS

TRACT #2 49.807 ACRES

A PARCEL OF LAND BEING PART OF THE WEST HALF OF THE SOUTHWEST QUARTER OF SECTION 24 AND THE EAST HALF OF THE SOUTHEAST QUARTER OF SECTION 23 AND THE NORTHEAST QUARTER OF THE NORTHEAST QUARTER OF SECTION 26, ALL IN TOWNSHIP 13 SOUTH, RANGE 2 WEST OF THE THIRD PRINCIPAL MERIDIAN AND BEING MORE PARTICULARLY DESCRIBED BY METES AND BOUNDS AS FOLLOWS:

BEGINNING at a STAKE, along the Northeast Corner of the West Half of the Southwest Quarter of said Section 24, thence S.01°20'31"E., along the East Line thereof, a distance of 2,271'9.51' feet to a Stone of the Southeast Corner of the West Half of the Southwest Quarter of said Section 24, thence N.88°57'28"W., along the Section Line, a distance of 1,303.29' feet to a Stone of the Southwest Corner of said Section 24, thence departing from said Section Line, N.89°43'32"W., a distance of 445.71' feet to a 1/2" Iron Rod; thence N.39°50'18"E., a distance of 619.99' feet to a 1/2" Iron Rod; thence N.53°47'18"E., a distance of 339.57' feet to a 1/2" Iron Rod; thence N.40°41'17"W., a distance of 707.76' feet to a 1/2" Iron Rod; thence N.79°08'37"W., a distance of 1,234.85' feet to a 1/2" Iron Rod on the West Line of the Northeast Quarter of the Southwest Quarter of said Section 23, thence N.01°04'49"W., along said West Line, a distance of 1,322.55' feet to a Stone of the Northwest Corner of the Northwest Quarter of the Southwest Quarter of said Section 23, thence S.57°41'52"E., along the North Line thereof, a distance of 1,376.35' feet to a Point being the West Quarter Corner of said Section 24, thence S.87°48'28"E., along the Quarter Section Line, a distance of 1,298.35' feet to the POINT of BEGINNING, containing 127.833 acres, more or less, in Union County, Illinois. As per Survey by Scott A. Richards, Professional Land Surveyor #2996, dated February of 2008.

ALONG WITH A 30' NON-EXCLUSIVE RECEPTAL EASEMENT FOR INGRESS AND EGRESS AND UTILITY PURPOSES LOCATED ACROSS PART OF THE SOUTHWEST QUARTER OF SECTION 23, AND THE EAST HALF OF THE NORTHEAST QUARTER OF THE SOUTHEAST QUARTER OF SECTION 23, AND THE SOUTHWEST QUARTER OF SECTION 26, ALL IN TOWNSHIP 13 SOUTH, RANGE 2 WEST OF THE THIRD PRINCIPAL MERIDIAN, SAID EASEMENT BEING 15 FEET ON EACH SIDE OF THE FOLLOWING DESCRIBED CENTRLINE:

COMMENCE at a Stake at the Northwest Corner of the Northeast Quarter of the Southeast Quarter of said Section 23; thence S.0104.96"E., along the West Line thereof, a distance of 1,322.58 feet to a 1/2" Iron Rod; thence N.23°41'01"W., a distance of 579.0837' ft., a distance of 1,234.85 feet to a 1/2" Iron Rod; thence S.40°10'01"E., a distance of 920.24 feet to a Point in the Centerline of an existing Roadway and the POINT OF BEGINNING; thence along said Roadway, S.20°00'00"W., a distance of 58.63 feet to a Point; thence S.01°06'01"E., a distance of 48.47 feet to a Point; thence S.55°42'18"W., a distance of 306.14 feet to a Point; thence S.48°02'13"W., a distance of 106.99 feet to a Point; thence S.30°11'01"W., a distance of 88.34 feet to a Point; thence E.33°50'18"W., a distance of 245.16 feet to a Point; thence S.46°00'00"W., a distance of 41.60 feet to a Point; thence S.38°00'00"W., a distance of 99.00 feet to a Point; thence S.20°00'00"W., a distance of 48.00 feet to a Point; thence S.26°00'00"W., a distance of 68.00 feet to a Point; thence S.05°00'00"W., a distance of 130.00 feet to a Point; thence S.02°00'00"E., a distance of 77.00 feet to a Point; thence S.04°02'18"W., a distance of 42.35 feet to a Point; thence S.26°35'19"W., a distance of 63.01 feet to a Point; thence S.33°07'32"E., a distance of 40.46 feet to a Point; thence S.43°31'41"W., a distance of 138.35 feet to a Point; thence S.46°05'54"W., a distance of 65.54 feet to a Point; thence S.43°31'41"W., a distance of 71.03 feet to a Point; thence S.42°01'43"W., a distance of 103.36 feet to a Point; thence S.47°57'50"W., a distance of 181.26 feet to a Point; thence S.42°30'07"W., a distance of 103.36 feet to a Point; thence S.33°31'06"W., a distance of 181.26 feet to a Point; thence S.42°30'07"W., a distance of 114.27 feet to a Point; thence S.33°45'30"W., a distance of 64.17 feet to a Point; thence S.21°57'56"W., a distance of 44.59 feet to a Point; thence S.33°45'30"W., a distance of 66.77 feet to a Point; thence S.21°57'56"W., a distance of 50.71' to a Point; thence S.11°37'59"W., a distance of 59.75 feet to a Point; thence S.07°12'13"W., a distance of 35.00 feet to a Point; thence S.01°22'51"W., a distance of 59.75 feet to a Point; thence S.04°10'11"E., a distance of 60.70 feet to a Point; it

A PARCEL OF LAND BEING PART OF THE WEST HALF OF THE SOUTHWEST QUARTER OF SECTION 24 AND THE EAST HALF OF THE SOUTHEAST QUARTER OF SECTION 23 AND THE NORTHEAST QUARTER OF THE NORTHEAST QUARTER OF SECTION 26, ALL IN TOWNSHIP 13 SOUTH, RANGE 2 WEST OF THE THIRD PRINCIPAL MERIDIAN AND BEING MORE PARTICULARLY DESCRIBED BY METES AND BOUNDS AS FOLLOWS:

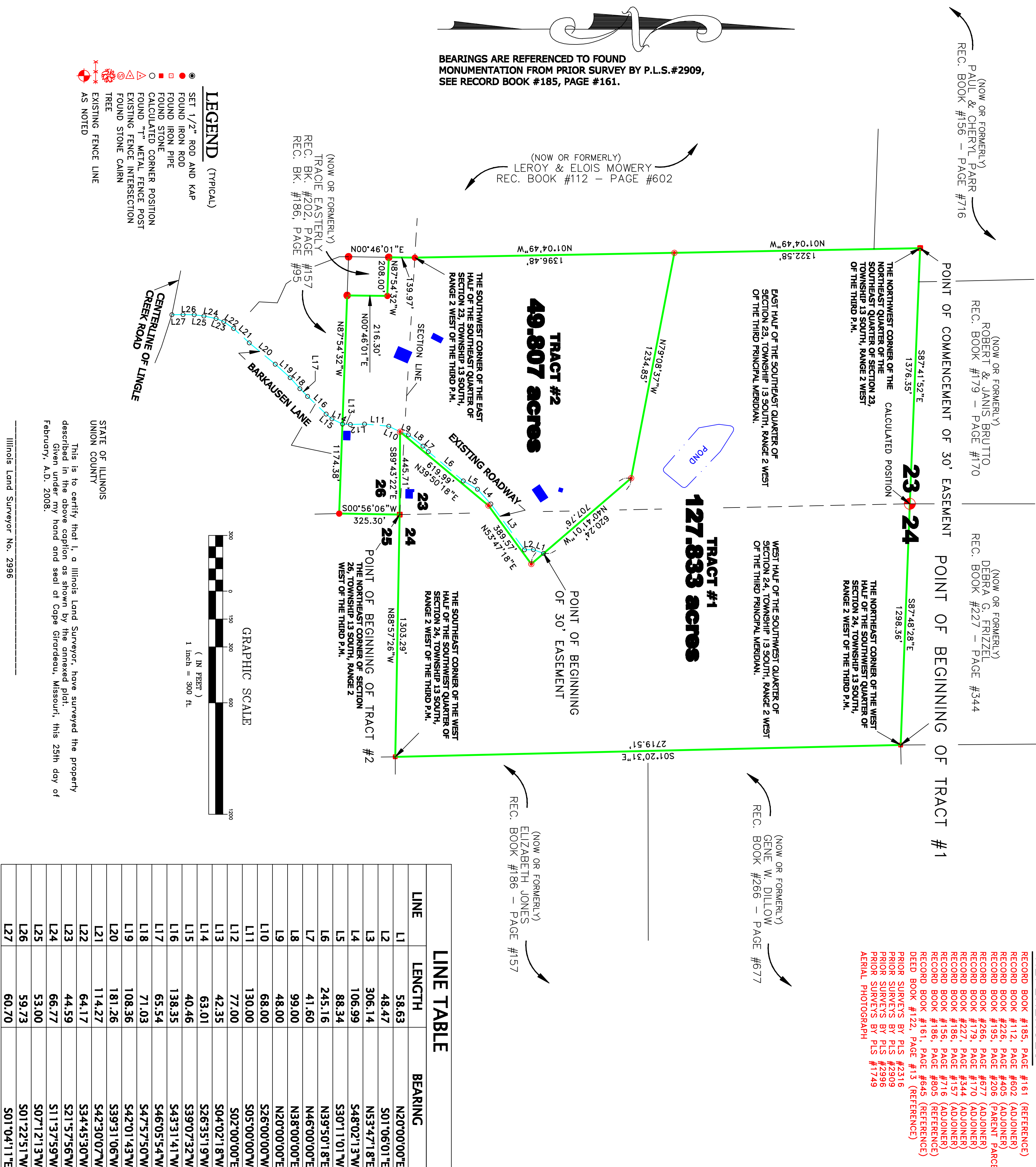
BEGINNING of the Northeast Corner of said Section 26; thence S.00°55'06"W., along the Section Line a distance of 325.30 feet to a 1/2" Iron Rod; thence departing from said Section Line, N.87°44'33"W., a distance of 1,154.38 feet to a 1/2" Iron Rod; thence N.00°46'01"E., a distance of 216.30 feet a 1/2" Iron Rod; thence N.87°54'33"W., a distance of 208.00 feet to a 1/2" Iron Rod on the West Line of the Northeast Quarter of said Section 26; thence N.00°46'01"E., along said West Line, a distance of 135.97 feet to a 1/2" Iron Rod; thence S.35°50'18"W., a distance of 616.99 feet to a 1/2" Iron Rod; thence S.89°43'22"E., a distance of 445.21 feet to the 1/2" Iron Rod BEGINNING, containing 59.8500 acres, more or less in Union County, thence N.01°04'49"W., along the West Line thereof, a distance of 136.48 feet to a 1/2" Iron Rod; thence N.01°04'49"W., along the West Line thereof, a distance of 1,234.85 feet to a 1/2" Iron Rod; thence S.40°41'01"E., a distance of 707.76 feet to a 1/2" Iron Rod; thence S.53°45'18"W., a distance of 388.57 feet to a 1/2" Iron Rod; thence S.35°50'18"W., a distance of 616.99 feet to a 1/2" Iron Rod; thence S.89°43'22"E., a distance of 445.21 feet to the 1/2" Iron Rod BEGINNING, containing 59.8500 acres, more or less in Union County.

ALONG WITH AND SUBJECT TO A 30 FT. NON-EXCLUSIVE PERPETUAL EASEMENT FOR INGRESS AND EGRESS AND UTILITY PURPOSES LOCATED ACROSS PART OF THE SOUTHWEST QUARTER OF THE SOUTHWEST QUARTER OF SECTION 24, AND THE SOUTHEAST QUARTER OF THE SOUTHWEST QUARTER OF SECTION 23, AND THE EAST HALF OF THE NORTHEAST QUARTER OF SECTION 26, ALL IN TOWNSHIP 13 SOUTH, RANGE 2 WEST OF THE THIRD PRINCIPAL MERIDIAN, SAID EASEMENT BEING 15 FEET ON EACH SIDE OF THE FOLLOWING DESCRIBED CENTRELINE:

COMMENCE at a Stake at the Northwest Corner of the Northeast Quarter of the Southeast Quarter of said Section 23, thence S.0104.49°E., along the West Line thereof, a distance of 1,322.58 feet to a 1/2" iron Rod; thence S.25°40.10'W., a distance of 5,279.0837°E., to a distance of 1.72" iron Rod; thence S.07°08.41'W., a distance of 8,020.24 feet to a Point in the Centerline of an existing Roadway and the POINT OF BEGINNING, thence along said Roadway, S.20°00.00'W., a distance of 586.65 feet to a Point; thence S.01°06.01'E., a distance of 48.47 feet to a Point; thence S.53°42.47'W., a distance of 586.65 feet to a Point; thence S.48°02.13'W., a distance of 106.99 feet to a Point; thence S.30°11.0'W., a distance of 306.14 feet to a Point; thence S.39°50.18'W., a distance of 106.99 feet to a Point; thence S.46°00.00'W., a distance of 88.34 feet to a Point; thence S.38°00.00'W., a distance of 245.16 feet to a Point; thence S.46°00.00'W., a distance of 41.60 feet to a Point; thence S.26°00.00'W., a distance of 99.00 feet to a Point; thence S.20°00.00'W., a distance of 48.00 feet to a Point; thence S.02°00.00'E., a distance of 68.00 feet to a Point; thence S.05°00.00'W., a distance of 130.00 feet to a Point; thence S.02°00.00'E., a distance of 77.00 feet to a Point; thence S.04°02.18'W., a distance of 42.55 feet to a Point; thence S.26°00.00'W., a distance of 63.01 feet to a Point; thence S.33°07.52'W., a distance of 40.46 feet to a Point; thence S.43°31.41'W., a distance of 138.35 feet to a Point; thence S.46°05.54'W., a distance of 65.54 feet to a Point; thence S.47°57.50'W., a distance of 71.03 feet to a Point; thence S.42°01.43'W., a distance of 103.36 feet to a Point; thence S.39°31.06'W., a distance of 181.26 feet to a Point; thence S.42°30.07'W., a distance of 114.27 feet to a Point; thence S.33°45.30'W., a distance of 64.17 feet to a Point; thence S.21°57.56'W., a distance of 44.59 feet to a Point; thence S.13°37.59'W., a distance of 66.77 feet to a Point; thence S.07°12.13'W., a distance of 53.00 feet to a Point; thence S.01°22.51'W., a distance of 59.75 feet to a Point; thence S.01°04.11'W., a distance of 60.70 feet to a Point; it then follows the Centerline of Lingit Creek Road and the TERMINUS of said Easement.

REFERENCES

- | | |
|----------------------------|--|
| PRIOR SURVEYS BY PLS #2316 | RECORD BOOK #185, PAGE #61 (REFERENCE) |
| PRIOR SURVEYS BY PLS #2909 | RECORD BOOK #112, PAGE #602 (ADJONED) |
| PRIOR SURVEYS BY PLS #2966 | RECORD BOOK #226, PAGE #405 (ADJONED) |
| PRIOR SURVEYS BY PLS #7749 | RECORD BOOK #195, PAGE #206 (PARENT ADJONED) |
| ARIAL PHOTOGRAPH | RECORD BOOK #566, PAGE #6177 (ADJONED) |
| | RECORD BOOK #179, PAGE #170 (ADJONED) |
| | RECORD BOOK #227, PAGE #534 (ADJONED) |
| | RECORD BOOK #186, PAGE #157 (ADJONED) |
| | RECORD BOOK #188, PAGE #150 (ADJONED) |
| | RECORD BOOK #161, PAGE #665 (REFERENCE) |
| | RECORD BOOK #122, PAGE #153 (REFERENCE) |



LINE TABLE		
LINE	LENGTH	BEARING
L1	58.53	N20°00'00"E
L2	48.47	S01°06'01"E
L3	306.14	N53°47'18"E
L4	106.99	S48°02'13"W
L5	88.34	S30°11'01"W
L6	245.16	N39°50'18"E
L7	41.60	N46°00'00"E
L8	99.00	N38°00'00"E
L9	48.00	N20°00'00"E
L10	68.00	S26°00'00"W
L11	130.00	S05°00'00"W
L12	77.00	S02°00'00"E
L13	42.35	S04°02'18"W
L14	63.01	S26°35'19"W
L15	40.46	S39°07'42"W
L16	138.35	S43°31'41"W
L17	65.54	S46°05'54"W
L18	71.03	S47°57'50"W
L19	108.36	S42°01'43"W
L20	181.26	S39°31'06"W
L21	114.27	S42°30'07"W
L22	64.17	S34°45'30"W
L23	44.59	S21°57'56"W
L24	66.77	S11°37'59"W
L25	53.00	S07°12'13"W
L26	59.73	S01°22'51"W
L27	60.70	S01°04'11"E

This is to certify that I, a Illinois Land Surveyor, have surveyed the property described in the above caption as shown by the annexed plat.
Given under my hand and seal at Cape Girardeau, Missouri, this 25th day of February, A.D. 2008.

Illinois Land Surveyor No. 2996

DATE: 7-23-20 SHEET

[illegible]

R801015 1 OF 1

RICHARDS LAND SURVEYING
1813 GREENBRIER, CAPE GIRARDEAU, MISSOURI, 65611
PH. (573) 338-7473 FAX (573) 338-7473