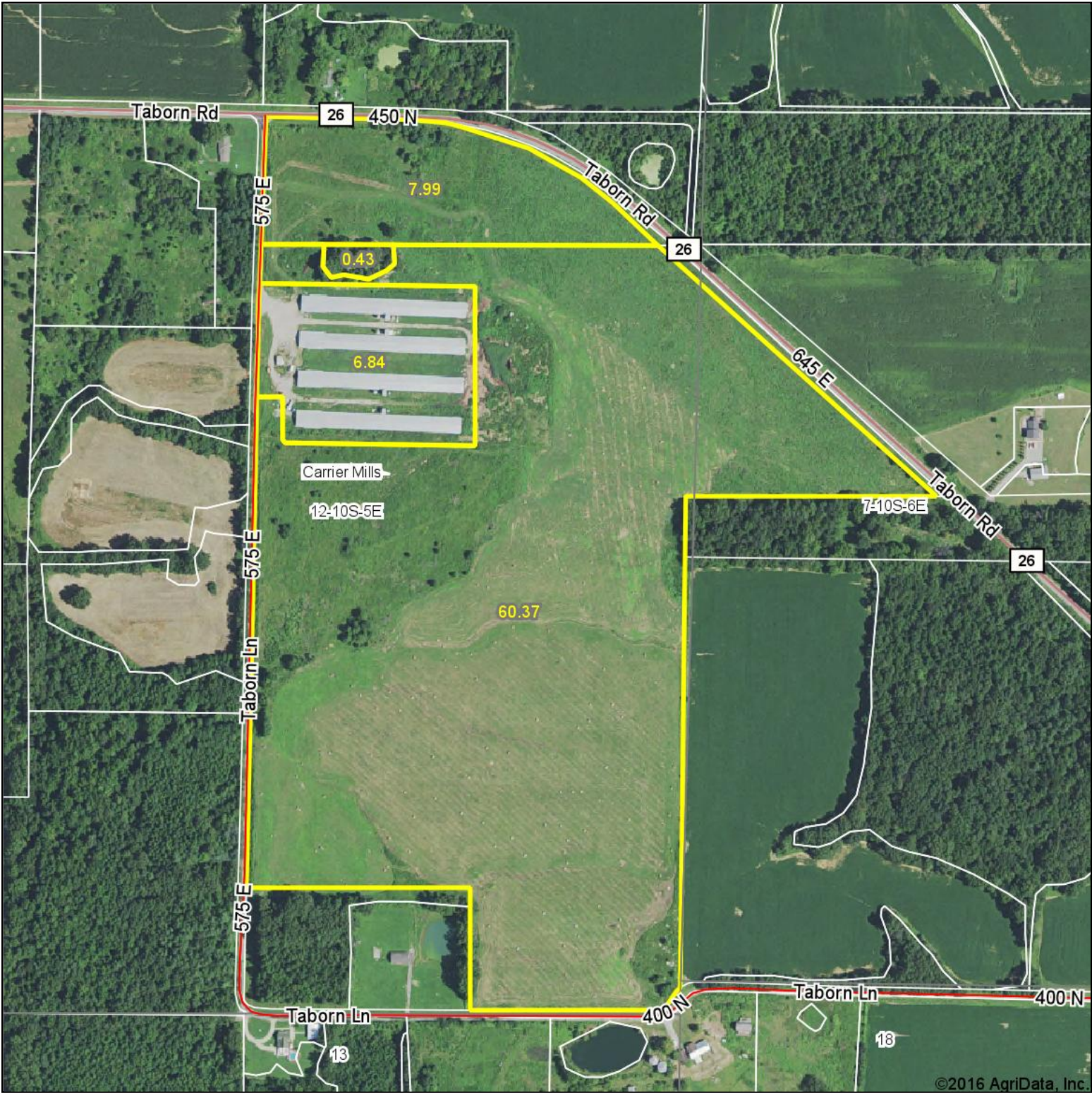
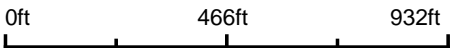


Aerial Map



map center: 37° 39' 43.01, -88° 35' 58.59



Maps Provided By:



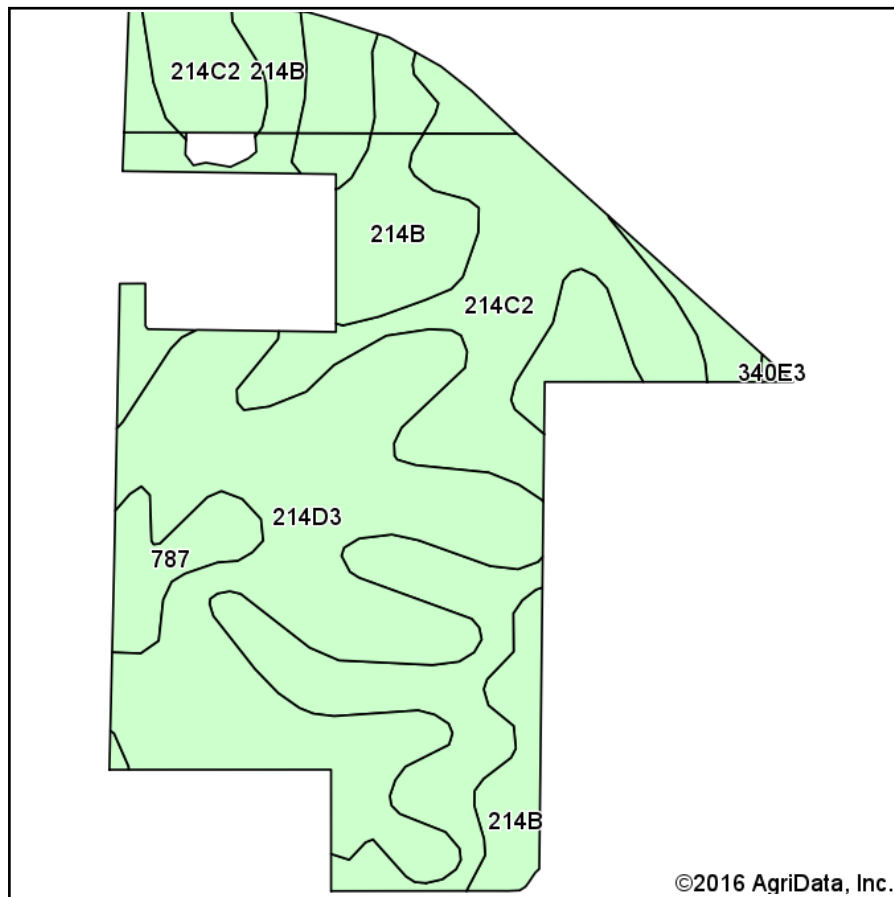
© AgriData, Inc. 2016 www.AgriDataInc.com

12-10S-5E
Saline County
Illinois

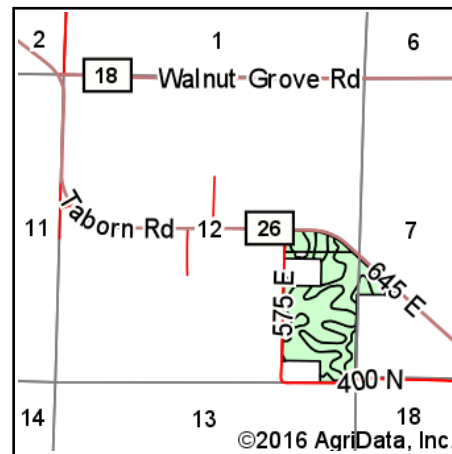


12/21/2016

Soils Map



Soils data provided by USDA and NRCS.



State: **Illinois**
 County: **Saline**
 Location: **12-10S-5E**
 Township: **Carrier Mills**
 Acres: **68.36**
 Date: **12/21/2016**



Maps Provided By:

 © AgriData, Inc. 2016 www.AgrIDataInc.com



Area Symbol: IL165, Soil Area Version: 11

Code	Soil Description	Acres	Percent of field	Il. State Productivity Index Legend	Corn Bu/A	Soybeans Bu/A	Wheat Bu/A	Crop productivity index for optimum management
**214C2	Hosmer silt loam, 5 to 10 percent slopes, eroded	26.81	39.2%		**126	**41	**52	**95
**214D3	Hosmer silt loam, 5 to 10 percent slopes, severely eroded	25.17	36.8%		**104	**34	**43	**78
**214B	Hosmer silt loam, 2 to 5 percent slopes	13.65	20.0%		**139	**46	**57	**104
787	Banlic silt loam	2.64	3.9%		142	47	56	106
**340E3	Zanesville silt loam, 12 to 18 percent slopes, severely eroded	0.09	0.1%		**86	**30	**37	**65
Weighted Average					121.1	39.6	49.8	90.9

Area Symbol: IL165, Soil Area Version: 11

Table: Optimum Crop Productivity Ratings for Illinois Soil by K.R. Olson and J.M. Lang, Office of Research, ACES, University of Illinois at Champaign-Urbana. Version: 1/2/2012 Amended Table S2 B811

Crop yields and productivity indices for optimum management (B811) are maintained at the following NRES web site:

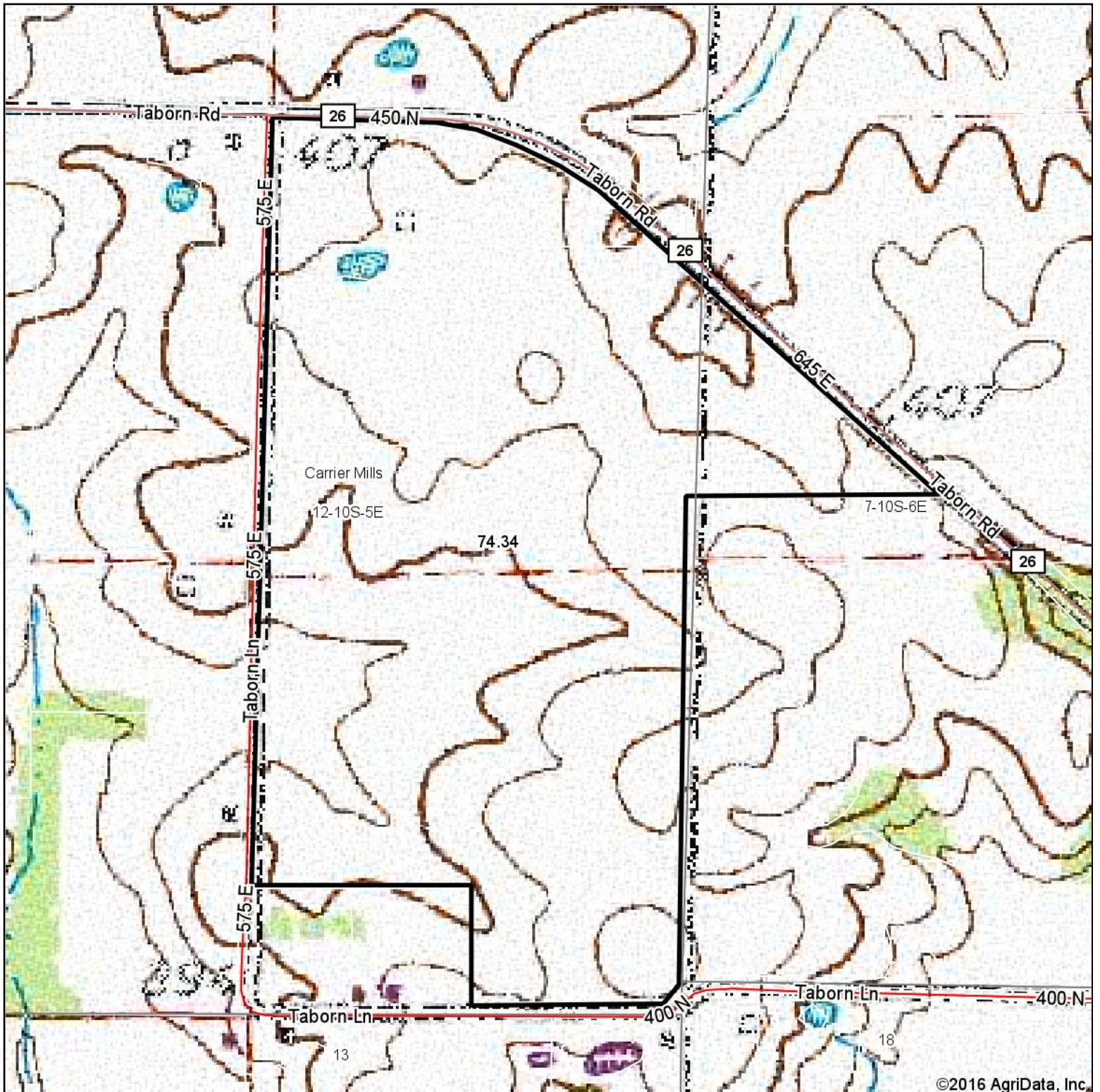
<https://www.ideals.illinois.edu/handle/2142/1027/>

** Indexes adjusted for slope and erosion according to Bulletin 811 Table S3

Soils data provided by USDA and NRCS. Soils data provided by University of Illinois at Champaign-Urbana.

*c: Using Capabilities Class Dominant Condition Aggregation Method

Topography Map



©2016 AgriData, Inc.

map center: 37° 39' 43.01, -88° 35' 58.59

0ft 466ft 932ft



Maps Provided By:



© AgriData, Inc. 2016

www.AgriDataInc.com

12-10S-5E
Saline County
Illinois



12/21/2016