

LAND AUCTION — SELLING ABSOLUTE!

St. Clair County IL 170+- Acres — Vera Maurer Estate
Offered as 2 Farms: Productive Farmland, Almost All Tillable

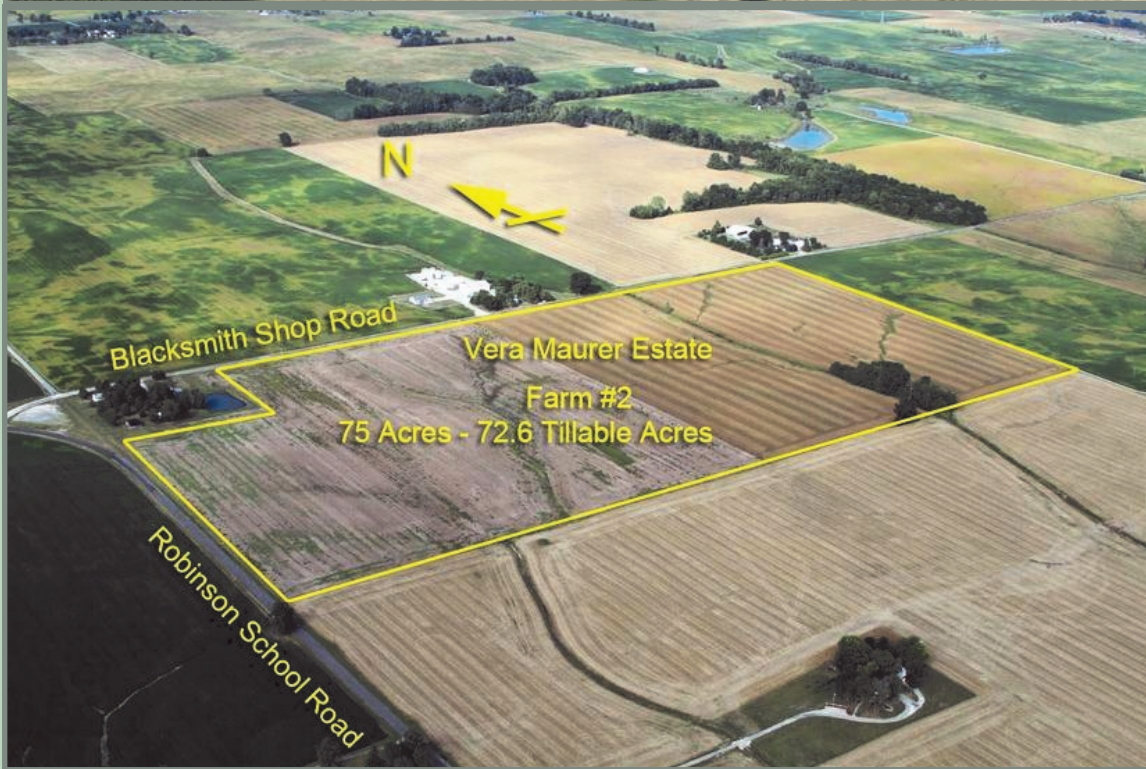
SALE: Saturday, November 19, at 10 a.m.

At the Broad Hollow Grange near New Athens

(Between Routes 159 and 13 at 6733 Robinson School Road)

OPEN HOUSE: Saturday, October 29, from 9 to 11 a.m. or By Appt

(Agent Omar Koester will be at Farm 1)



Buy A Farm Land and Auction Company is pleased to offer at Public Auction the Vera Maurer Estate. Farms are located South of Freeburg and Smithton and will be sold separately.

Farm 1 is 95+- acres and is located on Geo Leilich Road. Farm is all tillable. Taxes: \$293.



Farm 2 is 75+- acres with 72.6+- tillable. Farm is located at the corner of Blacksmith Shop Road and Robinson School Road. Taxes: \$156.



Productive Farmland — Almost All Tillable — Good Return on Investment — Home Sites with Lake Possibilities

Two Sides of Both Farms Front on Public Roads — Close to St. Louis Metro Area — Freeburg Schools

Land to be Surveyed with Legal Descriptions

Contact Agent for More Information



Omar Koester
Cell: 618-615-5283
Email: okoester@buyafarm.com

Auctioneer Mark Kennedy — IL License #40000202
Terms: 10% Down, Balance at Closing
Complete Terms and Conditions on Website

BuyAFarm.com

800-443-1998

Specializing in Rural Real Estate Sales and Auctions



buyafarm.com

Buy A Farm Land and Auction Company
1403 Hillcrest Drive — Sparta IL 62286
800-443-1998