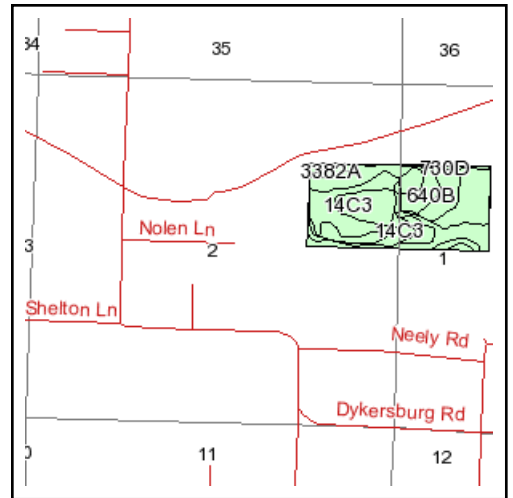
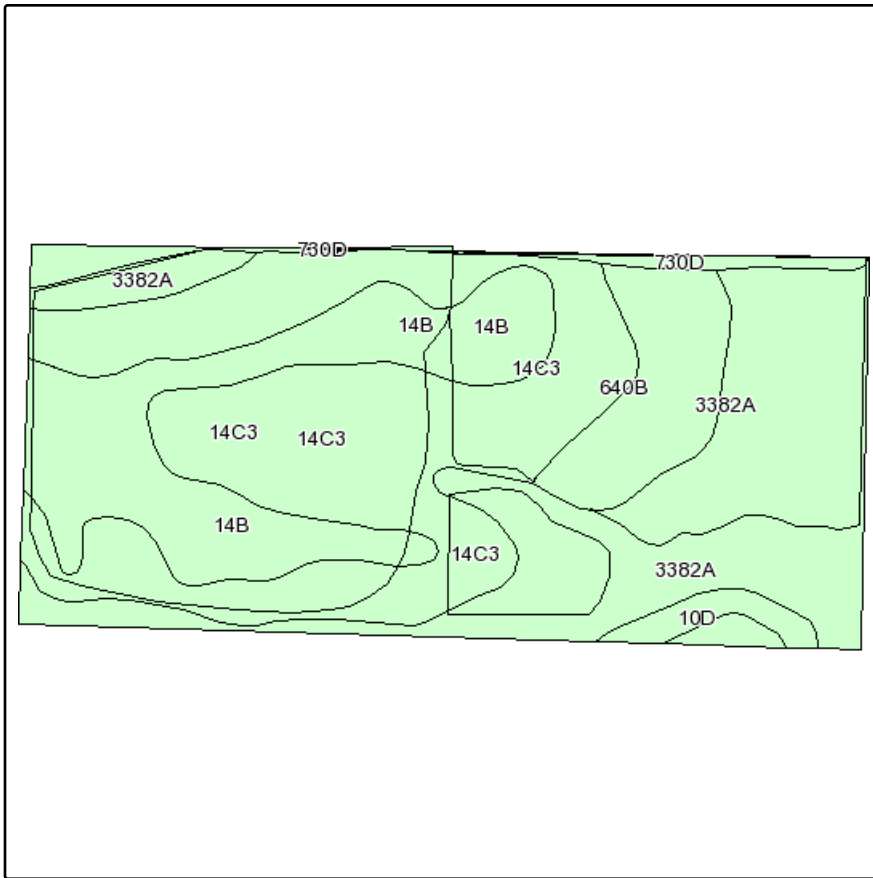
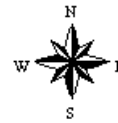


# Soils Map



State: **Illinois**  
 County: **Williamson**  
 Location: **001-010S-004E**  
 Township: **Stonefort**  
 Acres: **134.6**  
 Date: **1/18/2012**



Maps provided by:



©AgriData, Inc 2008  
 www.AgriDataInc.com

Fsa borders provided by the Farm Service Agency as of May 23, 2008.  
 Soils data provided by USDA and NRCS.  
 PLSS provided by Illinois State Geological Survey.

Code	Soil Description	Acres	Percent of field	Corn Bu/A	Soybeans Bu/A	Wheat Bu/A	Grass-legume e hay, T/A	Crop productivity index for optimum management
**14C3	Ava silty clay loam, 5 to 10 percent slopes, severely eroded	51.9	38.6%	**100	**33	**41	0.00	**74
3382A	Belknap silt loam, 0 to 2 percent slopes, frequently flooded	37	27.5%	156	52	63	4.89	117
**14B	Ava silt loam, 2 to 5 percent slopes	29.3	21.8%	**134	**44	**54	0.00	**99
**640B	Bluford silt loam, bench, 2 to 5 percent slopes	12	8.9%	**135	**44	**54	0.00	**100
730D	Bethesda gravelly silt loam, 7 to 20 percent slopes	3	2.2%				.00	
**10D	Plumfield silty clay loam, 10 to 18 percent slopes	1.4	1.0%	**97	**32	**37	**3.19	**74
<b>Weighted Average</b>				<b>123.7</b>	<b>40.8</b>	<b>50.1</b>	<b>1.35</b>	<b>91.9</b>

**Table: Optimum Crop Productivity Ratings for Illinois Soil by K.R. Olson and J.M. Lang, Office of Research, ACES, University of Illinois at Champaign-Urbana.** Version: 1/2/2012 Amended Table S2 B811 (Updated 1/10/2012)

Crop yields and productivity indices for optimum management (B811) are maintained at the following NRES web site: <http://soilproductivity.nres.illinois.edu/>

\*\* Indexes adjusted for slope and erosion according to Bulletin 811 Table S3

e Soils in the well drained group were not rated for grass-legume and are shown with a zero "0".